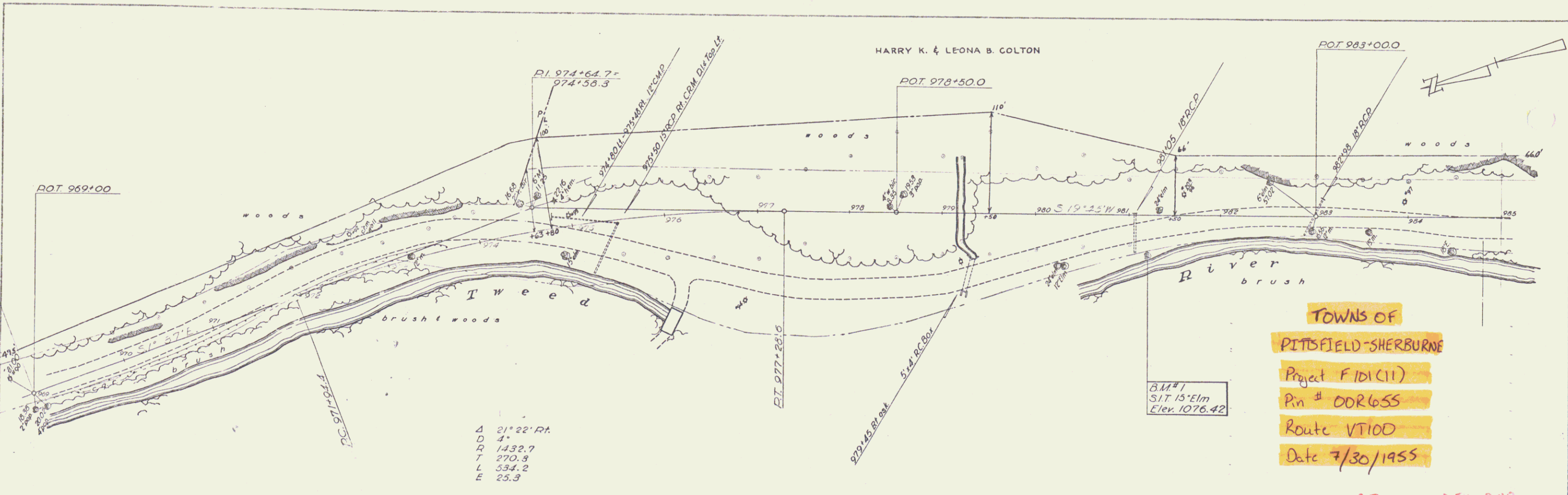


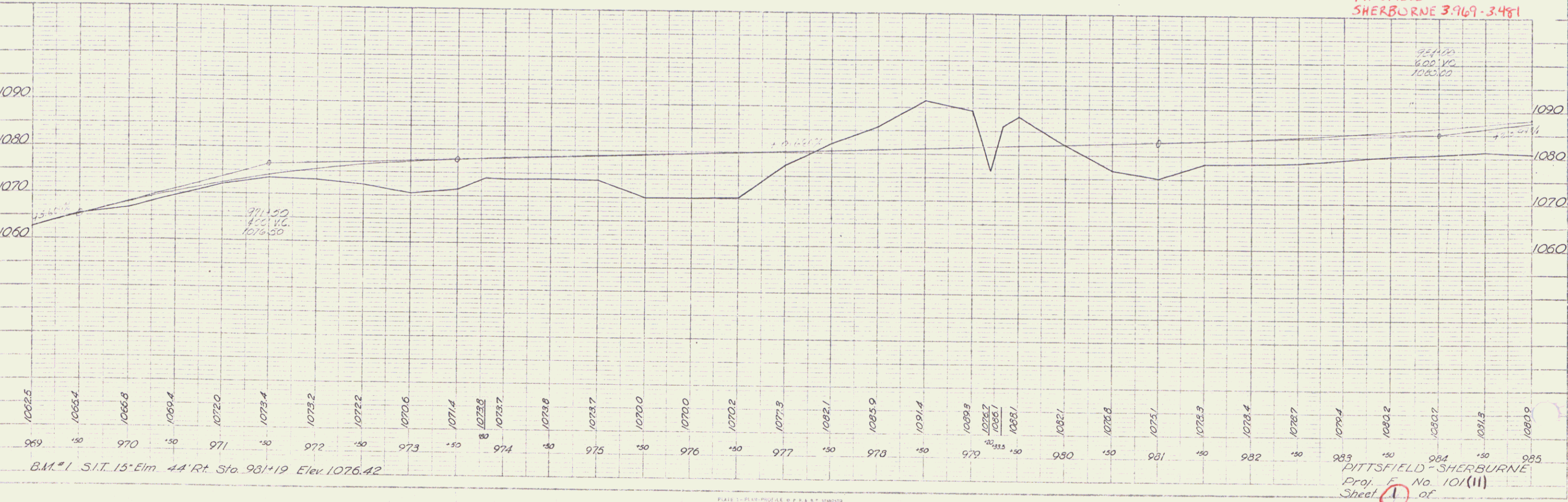
NEW
 SHALDERS
 COLLISON
 17/74
 1/78
 MILLER
 7/76



TOWNS OF
 PITTSFIELD-SHERBURNE
 Project FID1(11)
 Pin # DDR655
 Route VT100
 Date 7/30/1955

PITTSFIELD 0.516-0.00
 SHERBURNE 3.969-3.481

PROJECT
 ROAD TO
 ACROSS
 THE
 TWEED RIVER
 AT
 STATION 981+19



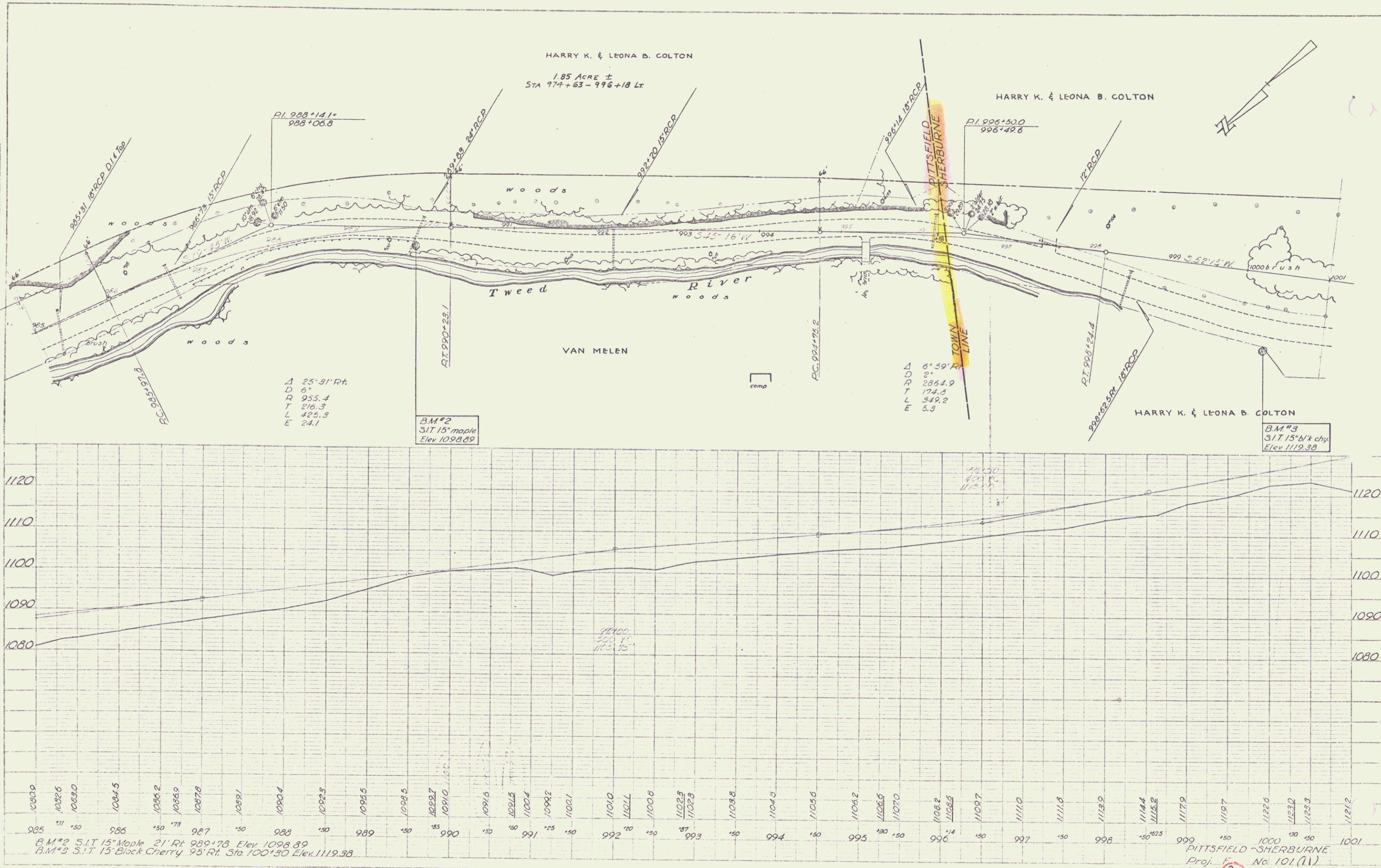
B.M. #1 S.I.T. 15' Elm 44' Rt. Sta. 981+19 Elev. 1076.42

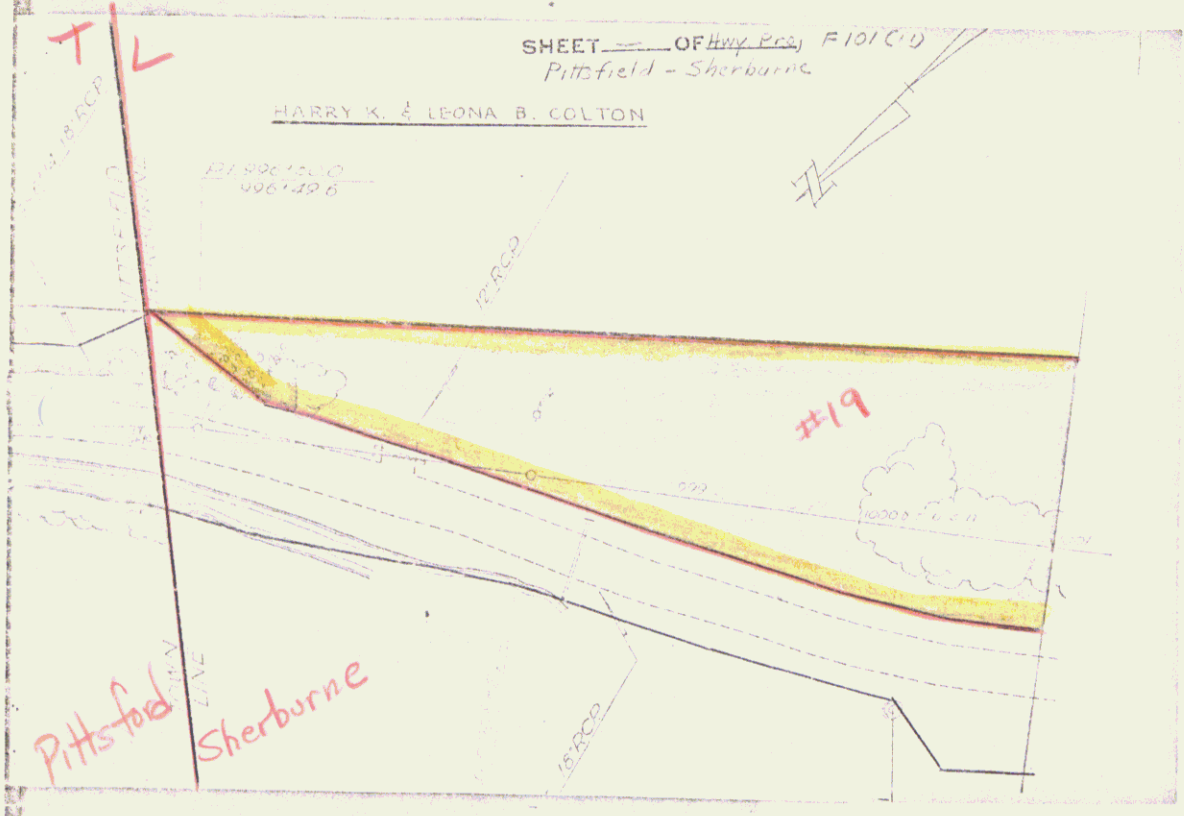
PITTSFIELD-SHERBURNE
 Proj. F No. 101(11)
 Sheet 1 of

PLATE 1-PLANS PROFILE & P.A. & T. STATIONS
 REF. TO FIELD RECORDS
 P.A. & T. STATIONS
 100' SCALE

PLAN
 SHEET NO. 101 (11)
 DATE 10/1/58
 DRAWN BY MILLER
 CHECKED BY
 SCALE 1" = 40'

PROFILE
 SHEET NO. 101 (11)
 DATE 10/1/58
 DRAWN BY MILLER
 CHECKED BY
 SCALE 1" = 40'





SHEET 2A
3

30



BM #2
SIT 12' in
Elev 1164.00

SHEET — OF Proj. F 101(11)
Pittsfield - Sherburne

Ditch A
15 ACRES =
574.00 x 19.40 LT

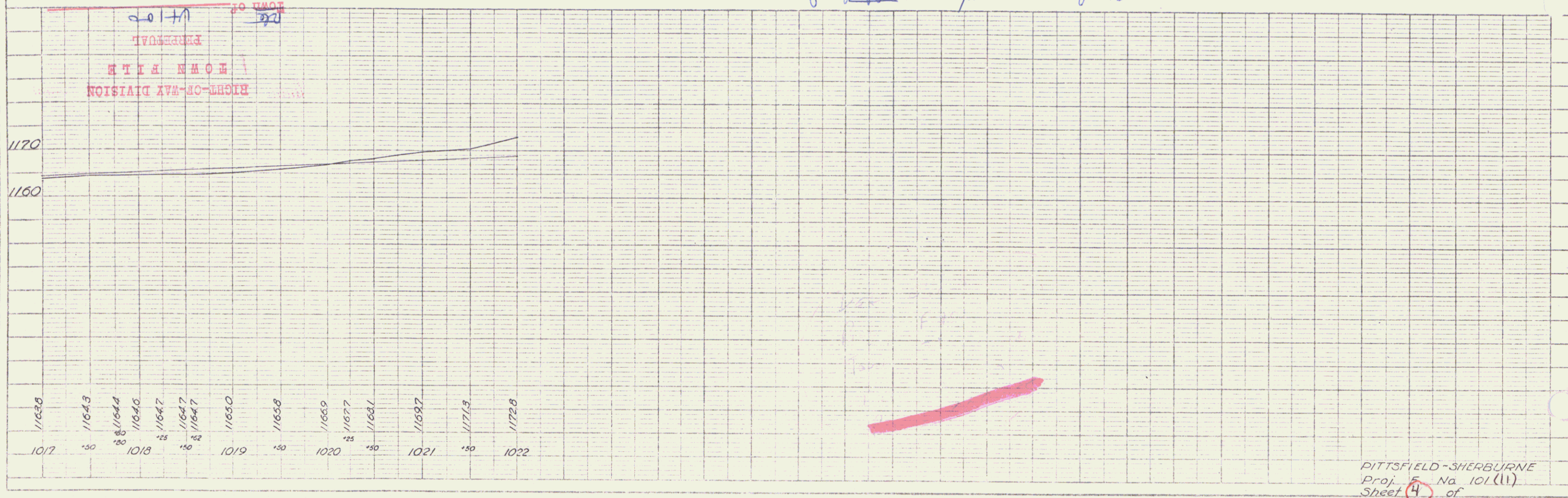
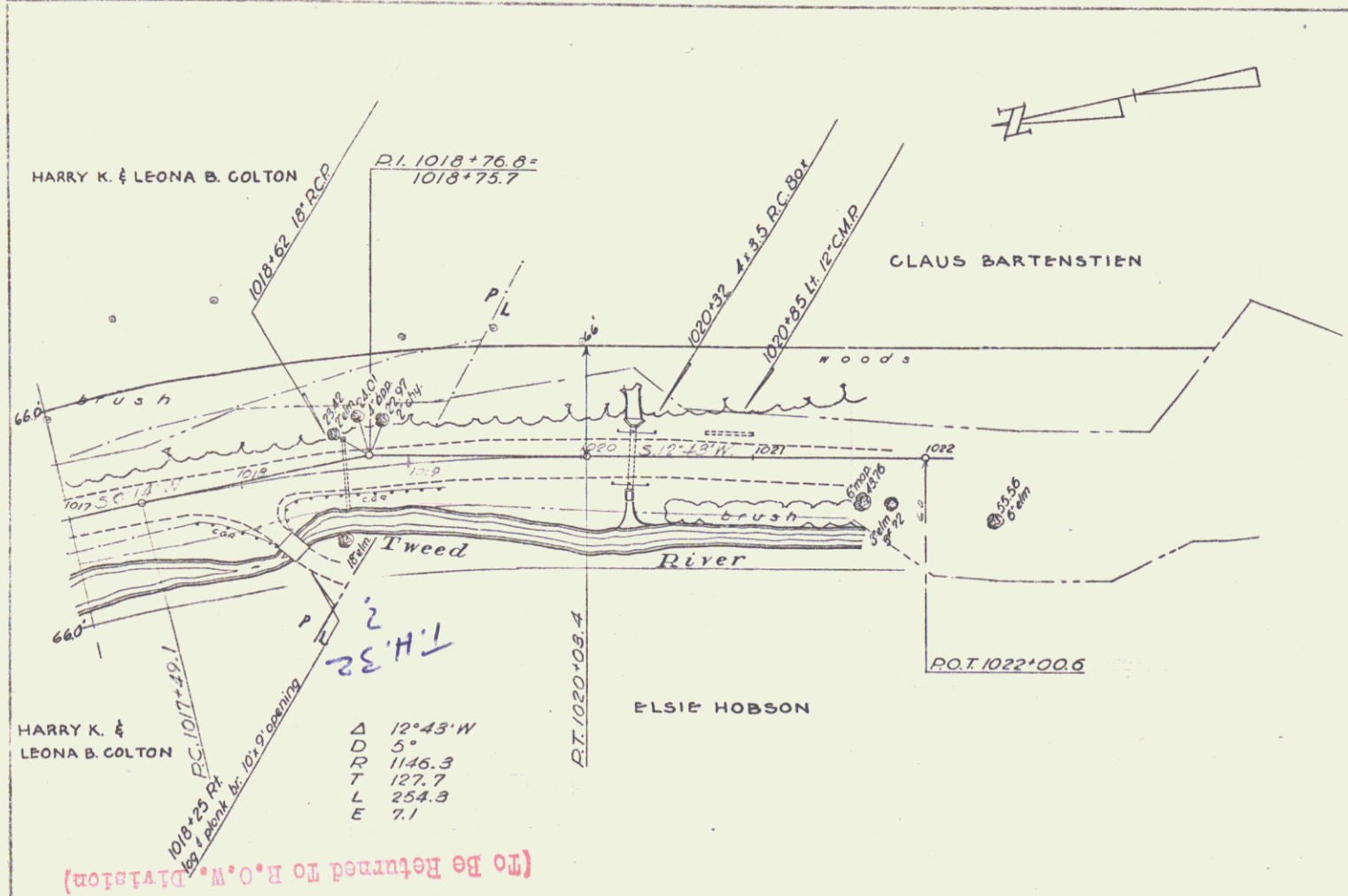
#19

Ditch B
0.25 ACRES =
574.00 x 10.9 x 31.7

SHEET 3A

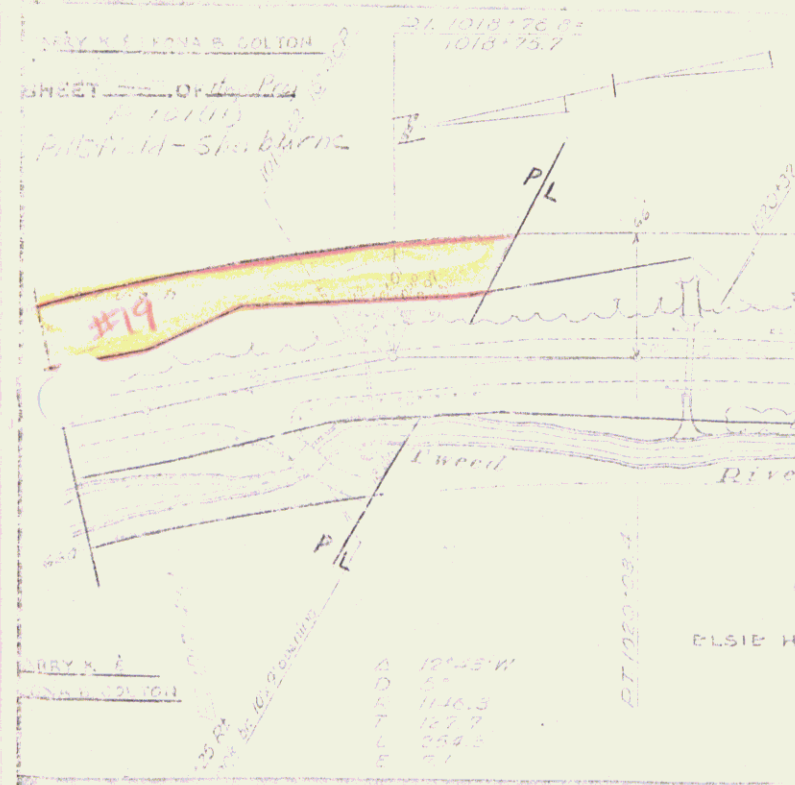
5

PLAN
 DRAWN BY
 CHECKED BY
 DATE
 SCALE
 SHEET NO. 4 OF 6



Skt. 1022
 5' Station
 T/L
 1967.57
 1967.57
 1967.57
 1967.57

PITTSFIELD-SHERBURNE
 Proj. 5 Na 101(11)
 Sheet 4 of 6



POOR ORIGINAL COPY

* 1021

SHEET HA

7