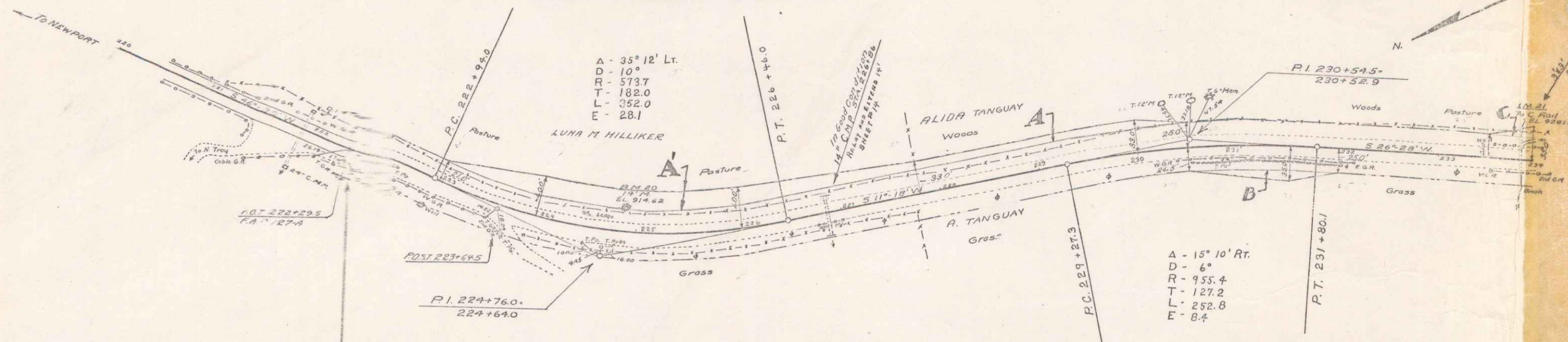
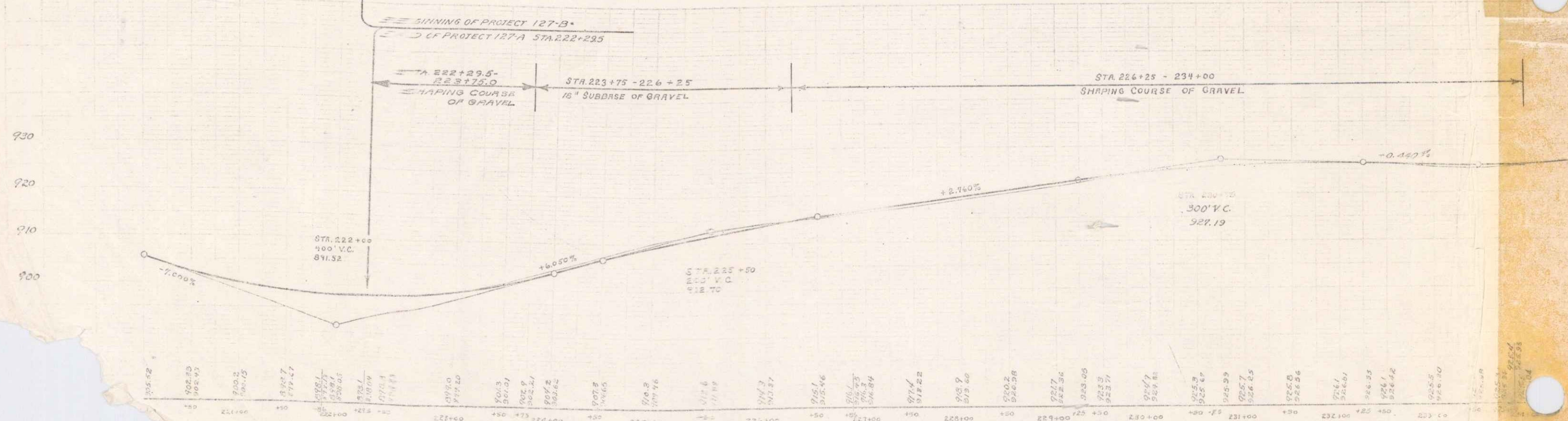


POOR ORIGINAL COPY

STATE RECORDS
 1932



PARCEL	INSTRUMENT	DATE	GRANTOR	GRANTEE	RECORDED	REMARKS
ABCDEF6	W.O.	11-9-32	ALIDA TANGUAY	JJ. of VT.	355-15-32-29-33	
A'	G.C.O.	11-9-32	LUNA HILLIKER	"	490-117-33	



STATION	ELEVATION
222+00	891.52
222+10	891.52
222+20	891.52
222+30	891.52
222+40	891.52
222+50	891.52
222+60	891.52
222+70	891.52
222+80	891.52
222+90	891.52
223+00	891.52
223+10	891.52
223+20	891.52
223+30	891.52
223+40	891.52
223+50	891.52
223+60	891.52
223+70	891.52
223+80	891.52
223+90	891.52
224+00	891.52
224+10	891.52
224+20	891.52
224+30	891.52
224+40	891.52
224+50	891.52
224+60	891.52
224+70	891.52
224+80	891.52
224+90	891.52
225+00	891.52
225+10	891.52
225+20	891.52
225+30	891.52
225+40	891.52
225+50	891.52
225+60	891.52
225+70	891.52
225+80	891.52
225+90	891.52
226+00	891.52
226+10	891.52
226+20	891.52
226+30	891.52
226+40	891.52
226+50	891.52
226+60	891.52
226+70	891.52
226+80	891.52
226+90	891.52
227+00	891.52
227+10	891.52
227+20	891.52
227+30	891.52
227+40	891.52
227+50	891.52
227+60	891.52
227+70	891.52
227+80	891.52
227+90	891.52
228+00	891.52
228+10	891.52
228+20	891.52
228+30	891.52
228+40	891.52
228+50	891.52
228+60	891.52
228+70	891.52
228+80	891.52
228+90	891.52
229+00	891.52
229+10	891.52
229+20	891.52
229+30	891.52
229+40	891.52
229+50	891.52
229+60	891.52
229+70	891.52
229+80	891.52
229+90	891.52
230+00	891.52
230+10	891.52
230+20	891.52
230+30	891.52
230+40	891.52
230+50	891.52
230+60	891.52
230+70	891.52
230+80	891.52
230+90	891.52
231+00	891.52
231+10	891.52
231+20	891.52
231+30	891.52
231+40	891.52
231+50	891.52
231+60	891.52
231+70	891.52
231+80	891.52
231+90	891.52
232+00	891.52
232+10	891.52
232+20	891.52
232+30	891.52
232+40	891.52
232+50	891.52
232+60	891.52
232+70	891.52
232+80	891.52
232+90	891.52
233+00	891.52
233+10	891.52
233+20	891.52
233+30	891.52
233+40	891.52
233+50	891.52
233+60	891.52
233+70	891.52
233+80	891.52
233+90	891.52
234+00	891.52

SPIKE IN ROOT 14" MAPLE STA. 224+85 22' - EL. 314.68
 NAIL ON CULVERT HEADEN STA. 223+86 12' - EL. 328.76

2