

**INDEX OF SHEETS**

SHEET NO. 1	TITLE PAGE
2	TYPICAL CROSS-SECTION OF IMPROVEMENT (SEE NOTES, MAPS, AND PLAN)
3	DETAILS OF CONSTRUCTION - BANKING AND WIDENING TABLES
4-6	PLAN AND PROFILE SHEETS
7	STD. STRUCTURE SHEET - 58-11 - BARRIERS, SIGNS, AND LIGHTS
8	" " " " - 5-30 - GUARD RAIL
9	" " " " - 5-31 - BOUNDARY MARKERS
10-18	CROSS-SECTIONS

STANDARD SHEET 5-30 APPROVED BY THE CHIEF ENGINEER, ON AUG. 15, 1933.  
STANDARD SHEET 5-31 APPROVED BY THE CHIEF ENGINEER, ON JULY 25, 1934.

(To Be Returned to R.O.W. Division)  
TOWN OF TROY  
PERPETUAL  
TOWN FILE  
RIGHT-OF-WAY DIVISION

STATE OF VERMONT  
STATE HIGHWAY DEPARTMENT

PLAN AND PROFILE OF PROPOSED  
STATE HIGHWAY

NATIONAL RECOVERY HIGHWAY PROJECT

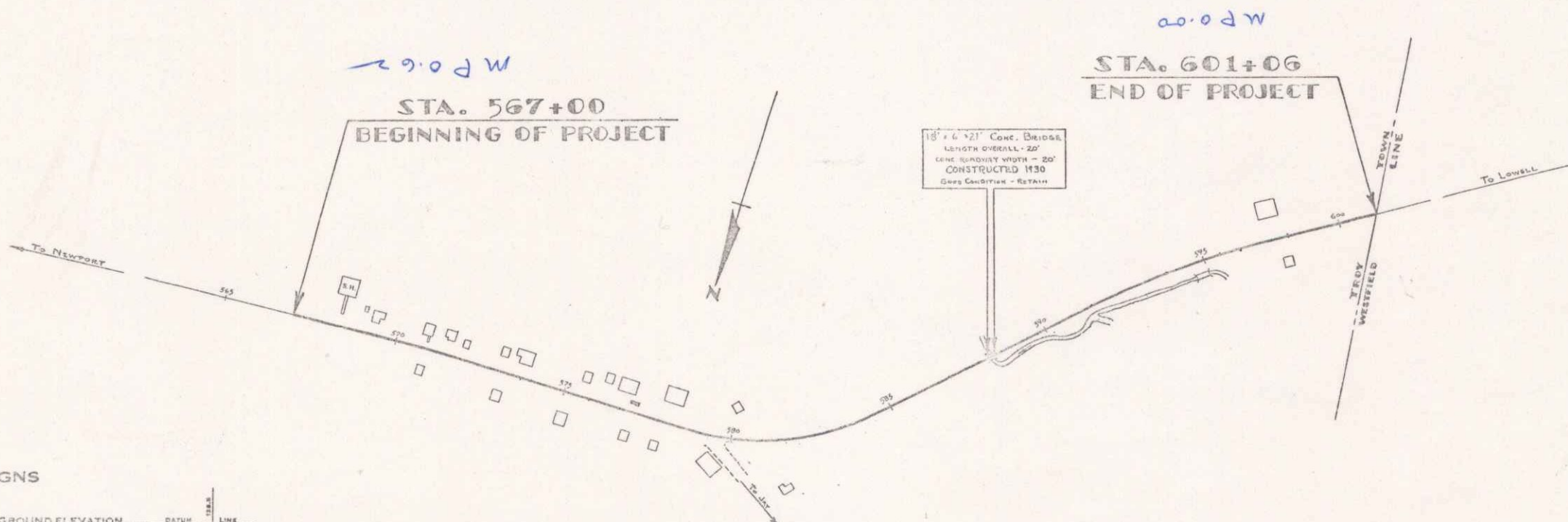
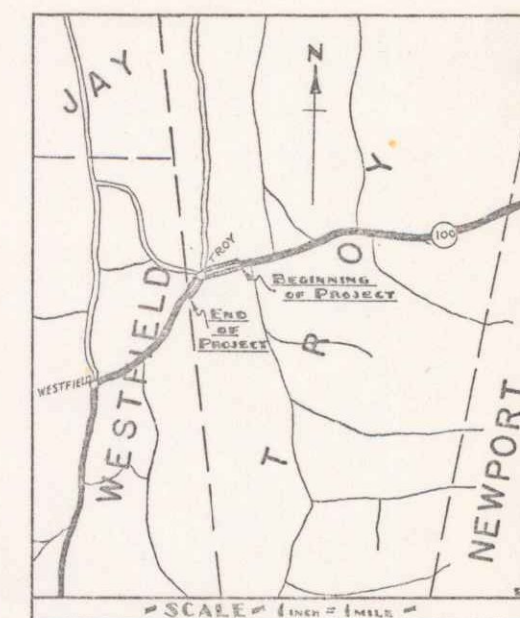
TOWN OF TROY

NEWPORT-NORTH HYDE PARK ROAD

FROM 150 FEET EAST OF THE SCHOOL HOUSE IN TROY  
VILLAGE SOUTHWESTERLY 0.646 MILES TO THE TROY-  
WESTFIELD TOWN LINE

LENGTH OF PROJECT: 3412.1 FEET = 0.646 MILES.

FED. ROAD DIST. NO.	STATE	PLAN NO.	YEAR	SHEET NO.	TOTAL SHEETS
9	VT.	11435	1934	1	18



**CONVENTIONAL SIGNS**

COUNTY LINE	GROUND ELEVATION
TOWN LINE	GRADE ELEVATION
FENCE LINE	
STONE WALL	
UNFENCED PROPERTY	
GUARD RAIL	
TRAVELED WAY	
RAILROAD	
RETAINING WALL	
CUT	
SURFACE	
CULVERT	
DROP INLET	
TROLLEY POLE	
POWER POLE	
TELEPHONE POLE	
TREES	
HEDGE	

**CURVE DATA**

DEFLECTION ANGLE	Δ
DEGREE OF CURVE	D
RADIUS OF CURVE	R
TANGENT DISTANCE	T
LENGTH OF CURVE	L
EXTERNAL DISTANCE	E
POINT OF INTERSECTION	P. I.
POINT OF CURVE	P. C.
POINT OF TANGENT	P. T.
POINT ON TANGENT	P. O. T.

**SCALES**

PROFILE	1" = 20'
PLAN	1" = 50'
PIERCE - HOR.	1" = 50'
PIERCE - VER.	1" = 10'
CROSS-SECTIONS	1" = 5'

**NOTE**  
THESE PLANS ARE SUBJECT TO SUCH REVISIONS AS MAY BE REQUIRED BY THE BUREAU OF PUBLIC ROADS AND THE COMMISSIONER OF HIGHWAYS. CONSTRUCTION IS TO BE CARRIED ON IN ACCORDANCE WITH THE PLANS AND STANDARD ROAD AND BRIDGE SPECIFICATIONS OF 1930 INCLUDING ALL SUBSEQUENT APPROVED REVISIONS, THE NATIONAL RECOVERY ACT SPECIAL PROVISIONS, AND SUCH REVISED SPECIFICATIONS AND SPECIAL PROVISIONS AS ARE SUBMITTED WITH THE PLANS.

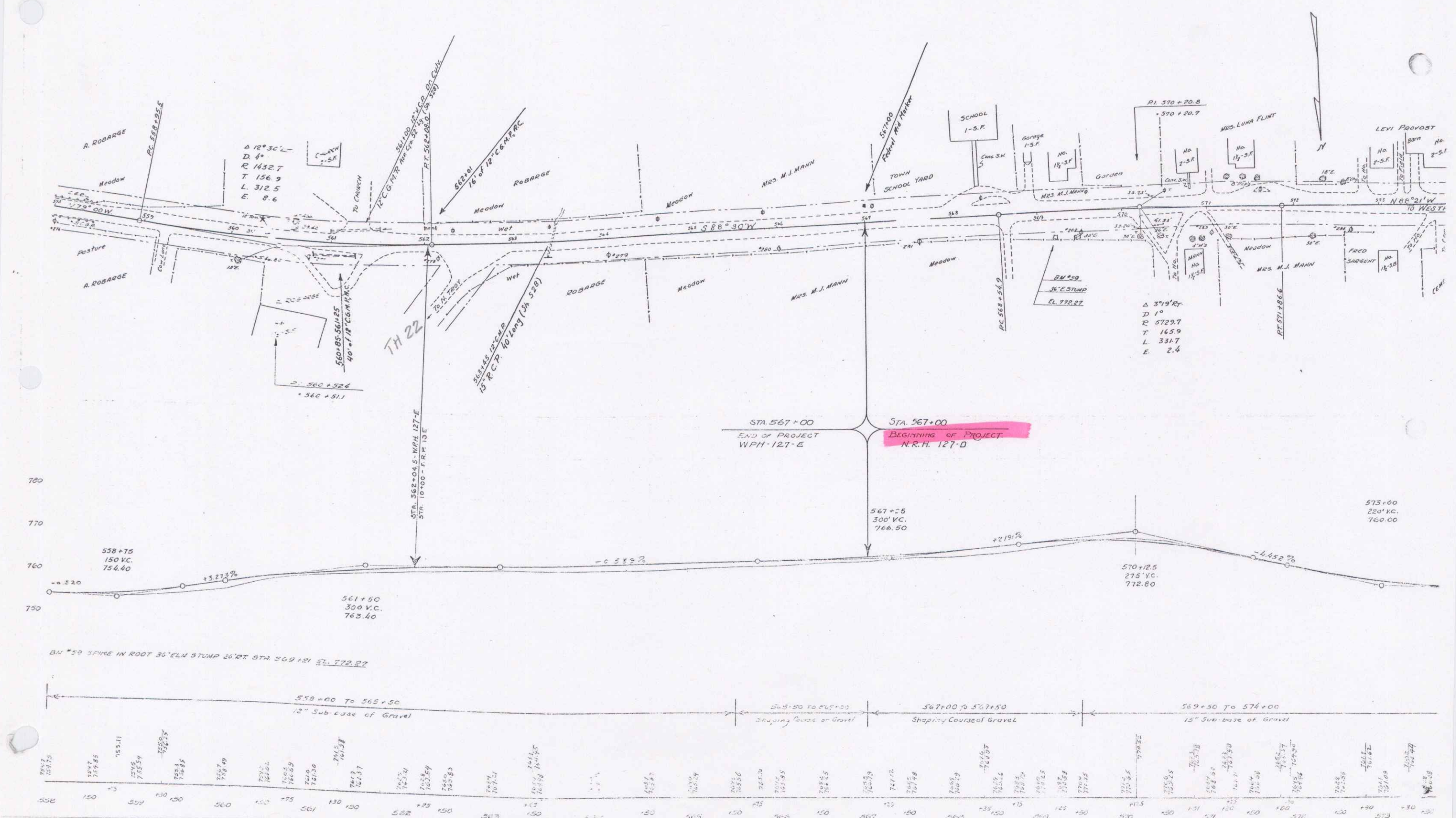
Date 01/14/1935  
Project: NRH 127D (1935)  
Route: VT 100  
Plan: 00P.045

APPROVED: JAN 14 1935  
COMMISSIONER OF HIGHWAYS

RECOMMENDED FOR APPROVAL  
RECOMMENDED FOR APPROVAL  
APPROVED

CORRECTED BY... SERIES NRH NO. 11435 FILED SHEET 1 OF 18

DIST. #9 TROY



$\Delta 12^\circ 30' L$   
 $D 4'$   
 $R 1432.7$   
 $T 156.9$   
 $L 312.5$   
 $E 8.6$

$\Delta 37^\circ 09'$   
 $D 1'$   
 $R 5729.7$   
 $T 165.9$   
 $L 334.7$   
 $E 2.4$

STA 567+00  
 END OF PROJECT  
 WPH-127-E

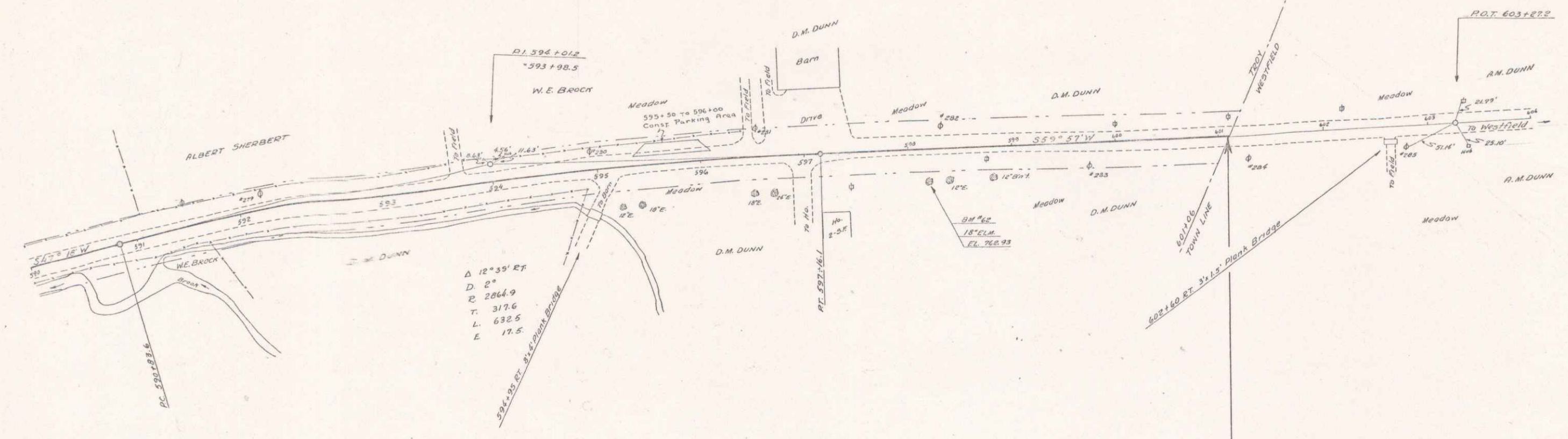
STA 567+00  
 BEGINNING OF PROJECT  
 N.R.H. 127-D

BM \*50 SPIKE IN ROOT 36" L.N. STUMP 26" RT. STA 560+20 EL. 772.22

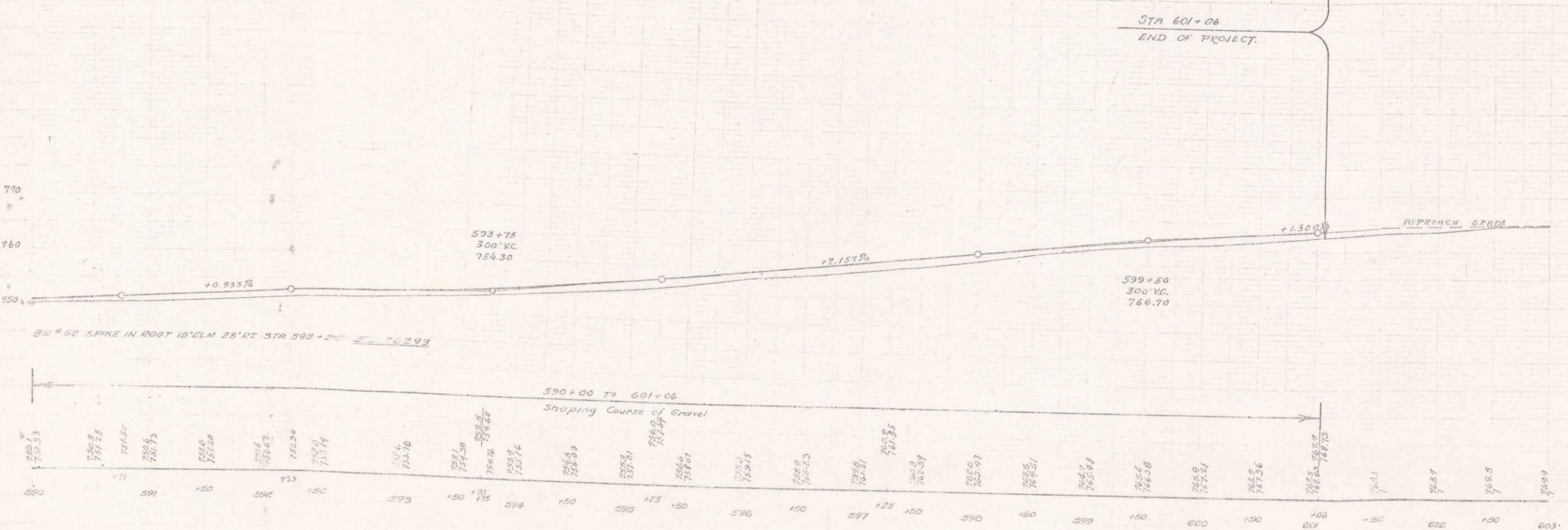
558+00 To 565+50	565+50 To 567+00	567+00 To 569+50	569+50 To 576+00
12" Sub-base of Gravel	Shaping Course of Gravel	Shaping Course of Gravel	12" Sub-base of Gravel
754.40	754.40	754.40	754.40
755.11	755.11	755.11	755.11
755.82	755.82	755.82	755.82
756.53	756.53	756.53	756.53
757.24	757.24	757.24	757.24
757.95	757.95	757.95	757.95
758.66	758.66	758.66	758.66
759.37	759.37	759.37	759.37
760.08	760.08	760.08	760.08
760.79	760.79	760.79	760.79
761.50	761.50	761.50	761.50
762.21	762.21	762.21	762.21
762.92	762.92	762.92	762.92
763.63	763.63	763.63	763.63
764.34	764.34	764.34	764.34
765.05	765.05	765.05	765.05
765.76	765.76	765.76	765.76
766.47	766.47	766.47	766.47
767.18	767.18	767.18	767.18
767.89	767.89	767.89	767.89
768.60	768.60	768.60	768.60
769.31	769.31	769.31	769.31
770.02	770.02	770.02	770.02
770.73	770.73	770.73	770.73
771.44	771.44	771.44	771.44
772.15	772.15	772.15	772.15
772.86	772.86	772.86	772.86
773.57	773.57	773.57	773.57
774.28	774.28	774.28	774.28
774.99	774.99	774.99	774.99
775.70	775.70	775.70	775.70
776.41	776.41	776.41	776.41
777.12	777.12	777.12	777.12
777.83	777.83	777.83	777.83
778.54	778.54	778.54	778.54
779.25	779.25	779.25	779.25
779.96	779.96	779.96	779.96
780.67	780.67	780.67	780.67
781.38	781.38	781.38	781.38
782.09	782.09	782.09	782.09
782.80	782.80	782.80	782.80
783.51	783.51	783.51	783.51
784.22	784.22	784.22	784.22
784.93	784.93	784.93	784.93
785.64	785.64	785.64	785.64
786.35	786.35	786.35	786.35
787.06	787.06	787.06	787.06
787.77	787.77	787.77	787.77
788.48	788.48	788.48	788.48
789.19	789.19	789.19	789.19
789.90	789.90	789.90	789.90
790.61	790.61	790.61	790.61
791.32	791.32	791.32	791.32
792.03	792.03	792.03	792.03
792.74	792.74	792.74	792.74
793.45	793.45	793.45	793.45
794.16	794.16	794.16	794.16
794.87	794.87	794.87	794.87
795.58	795.58	795.58	795.58
796.29	796.29	796.29	796.29
797.00	797.00	797.00	797.00
797.71	797.71	797.71	797.71
798.42	798.42	798.42	798.42
799.13	799.13	799.13	799.13
799.84	799.84	799.84	799.84
800.55	800.55	800.55	800.55
801.26	801.26	801.26	801.26
801.97	801.97	801.97	801.97
802.68	802.68	802.68	802.68
803.39	803.39	803.39	803.39
804.10	804.10	804.10	804.10
804.81	804.81	804.81	804.81
805.52	805.52	805.52	805.52
806.23	806.23	806.23	806.23
806.94	806.94	806.94	806.94
807.65	807.65	807.65	807.65
808.36	808.36	808.36	808.36
809.07	809.07	809.07	809.07
809.78	809.78	809.78	809.78
810.49	810.49	810.49	810.49
811.20	811.20	811.20	811.20
811.91	811.91	811.91	811.91
812.62	812.62	812.62	812.62
813.33	813.33	813.33	813.33
814.04	814.04	814.04	814.04
814.75	814.75	814.75	814.75
815.46	815.46	815.46	815.46
816.17	816.17	816.17	816.17
816.88	816.88	816.88	816.88
817.59	817.59	817.59	817.59
818.30	818.30	818.30	818.30
819.01	819.01	819.01	819.01
819.72	819.72	819.72	819.72
820.43	820.43	820.43	820.43
821.14	821.14	821.14	821.14
821.85	821.85	821.85	821.85
822.56	822.56	822.56	822.56
823.27	823.27	823.27	823.27
823.98	823.98	823.98	823.98
824.69	824.69	824.69	824.69
825.40	825.40	825.40	825.40
826.11	826.11	826.11	826.11
826.82	826.82	826.82	826.82
827.53	827.53	827.53	827.53
828.24	828.24	828.24	828.24
828.95	828.95	828.95	828.95
829.66	829.66	829.66	829.66
830.37	830.37	830.37	830.37
831.08	831.08	831.08	831.08
831.79	831.79	831.79	831.79
832.50	832.50	832.50	832.50
833.21	833.21	833.21	833.21
833.92	833.92	833.92	833.92
834.63	834.63	834.63	834.63
835.34	835.34	835.34	835.34
836.05	836.05	836.05	836.05
836.76	836.76	836.76	836.76
837.47	837.47	837.47	837.47
838.18	838.18	838.18	838.18
838.89	838.89	838.89	838.89
839.60	839.60	839.60	839.60
840.31	840.31	840.31	840.31
841.02	841.02	841.02	841.02
841.73	841.73	841.73	841.73
842.44	842.44	842.44	842.44
843.15	843.15	843.15	843.15
843.86	843.86	843.86	843.86
844.57	844.57	844.57	844.57
845.28	845.28	845.28	845.28
845.99	845.99	845.99	845.99
846.70	846.70	846.70	846.70
847.41	847.41	847.41	847.41
848.12	848.12	848.12	848.12
848.83	848.83	848.83	848.83
849.54	849.54	849.54	849.54
850.25	850.25	850.25	850.25
850.96	850.96	850.96	850.96
851.67	851.67	851.67	851.67
852.38	852.38	852.38	852.38
853.09	853.09	853.09	853.09
853.80	853.80	853.80	853.80
854.51	854.51	854.51	854.51
855.22	855.22	855.22	855.22
855.93	855.93	855.93	855.93
856.64	856.64	856.64	856.64
857.35	857.35	857.35	857.35
858.06	858.06	858.06	858.06
858.77	858.77	858.77	858.77
859.48	859.48	859.48	859.48
860.19	860.19	860.19	860.19
860.90	860.90	860.90	860.90
861.61	861.61	861.61	861.61
862.32	862.32	862.32	862.32
863.03	863.03	863.03	863.03
863.74	863.74	863.74	863.74
864.45	864.45	864.45	864.45
865.16	865.16	865.16	865.16
865.87	865.87	865.87	865.87
866.58	866.58	866.58	866.58
867.29	867.29	867.29	867.29
868.00	868.00	868.00	868.00
868.71	868.71	868.71	868.71
869.42	869.42	869.42	869.42
870.13	870.13	870.13	870.13
870.84	870.84	870.84	870.84
871.55	871.55	871.55	871.55
872.26	872.26	872.26	872.26
872.97	872.97	872.97	872.97
873.68	873.68	873.68	873.68
874.39	874.39	874.39	874.39
875.10	875.10	875.10	875.10
875.81	875.81	875.81	875.81
876.52	876.52	876.52	876.52
877.23	877.23	877.23	877.23
877.94	877.94	877.94	877.94
878.65	878.65	878.65	878.65
879.36	879.36	879.36	879.36
880.07	880.07	880.07	880.07
880.78	880.78	880.78	880.78
881.49	881.49	881.49	881.49
882.20	882.20	882.20	882.20
882.91	882.91	882.91	882.91
883.62	883.62	883.62	883.62
884.33	884.33	884.33	884.33
885.04	885.04	885.04	885.04
885.75	885.75	885.75	885.75
886.46	886.46	886.46	886.46
887.17	887.17	887.17	887.17
887.88	887.88	887.88	887.88
888.59	888.59	888.59	888.59
889.30	889.30	889.30	889.30
890.01	890.01	890.01	890.01
890.72	890.72	890.72	890.72
891.43	891.43	891.43	891.43
892.14	892.14	892.14	892.14
892.85	892.85	892.85	892.85
893.56	893.56	893.56	893.56
894.27	894.27	894.27	894.27
894.98	894.98	894.98	894.98
895.69	895.69	895.69	895.69
896.40	896.40	896.40	896.40
897.11	897.11	897.11	897.11
897.82	897.82	897.82	897.82
898.53	898.53	898.53	898.53
899.24	899.24	899.24	899.24
900.00	900.00	900.00	900.00



NRH  
127-D-1437  
(9335)



$\Delta$  12°35' RT  
D 0°  
R 2864.9  
T 317.6  
L 632.5  
E 17.5



SERIES WORK NO. 127-D (9335)  
SHEET 6 OF 15

4