

INDEX OF SHEETS

SHEET NO. 1	TITLE PAGE
" 2	TYPICAL CROSS-SECTION OF IMPROVEMENT
" 3	DETAILS OF CONSTRUCTION - BANKING & WIDENING TABLE
4-9	PLAN & PROFILE SHEETS
10	STD. STRUCTURE SHEET
11	"
12	"
13	"
14	"
15-29	CROSS SECTIONS
STANDARD SHEET	5-30
STANDARD SHEET	5-31
STANDARD SHEET	5-32
STANDARD SHEET	5-33
STANDARD SHEET	5-34
STANDARD SHEET	5-35
STANDARD SHEET	5-36
STANDARD SHEET	5-37
STANDARD SHEET	5-38
STANDARD SHEET	5-39
STANDARD SHEET	5-40
STANDARD SHEET	5-41
STANDARD SHEET	5-42
STANDARD SHEET	5-43
STANDARD SHEET	5-44
STANDARD SHEET	5-45
STANDARD SHEET	5-46
STANDARD SHEET	5-47
STANDARD SHEET	5-48
STANDARD SHEET	5-49
STANDARD SHEET	5-50
STANDARD SHEET	5-51
STANDARD SHEET	5-52
STANDARD SHEET	5-53
STANDARD SHEET	5-54
STANDARD SHEET	5-55
STANDARD SHEET	5-56
STANDARD SHEET	5-57
STANDARD SHEET	5-58
STANDARD SHEET	5-59
STANDARD SHEET	5-60
STANDARD SHEET	5-61
STANDARD SHEET	5-62
STANDARD SHEET	5-63
STANDARD SHEET	5-64
STANDARD SHEET	5-65
STANDARD SHEET	5-66
STANDARD SHEET	5-67
STANDARD SHEET	5-68
STANDARD SHEET	5-69
STANDARD SHEET	5-70
STANDARD SHEET	5-71
STANDARD SHEET	5-72
STANDARD SHEET	5-73
STANDARD SHEET	5-74
STANDARD SHEET	5-75
STANDARD SHEET	5-76
STANDARD SHEET	5-77
STANDARD SHEET	5-78
STANDARD SHEET	5-79
STANDARD SHEET	5-80
STANDARD SHEET	5-81
STANDARD SHEET	5-82
STANDARD SHEET	5-83
STANDARD SHEET	5-84
STANDARD SHEET	5-85
STANDARD SHEET	5-86
STANDARD SHEET	5-87
STANDARD SHEET	5-88
STANDARD SHEET	5-89
STANDARD SHEET	5-90
STANDARD SHEET	5-91
STANDARD SHEET	5-92
STANDARD SHEET	5-93
STANDARD SHEET	5-94
STANDARD SHEET	5-95
STANDARD SHEET	5-96
STANDARD SHEET	5-97
STANDARD SHEET	5-98
STANDARD SHEET	5-99
STANDARD SHEET	5-100

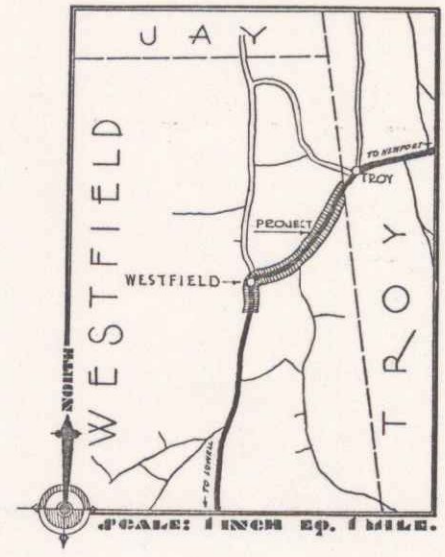
FED. ROAD DIST. NO.	STATE	PROJ. NO.	YEAR	SHEET NO.	TOTAL SHEETS
9	VT.	79-C(1935)	1	29	

STATE OF VERMONT
STATE HIGHWAY DEPARTMENT

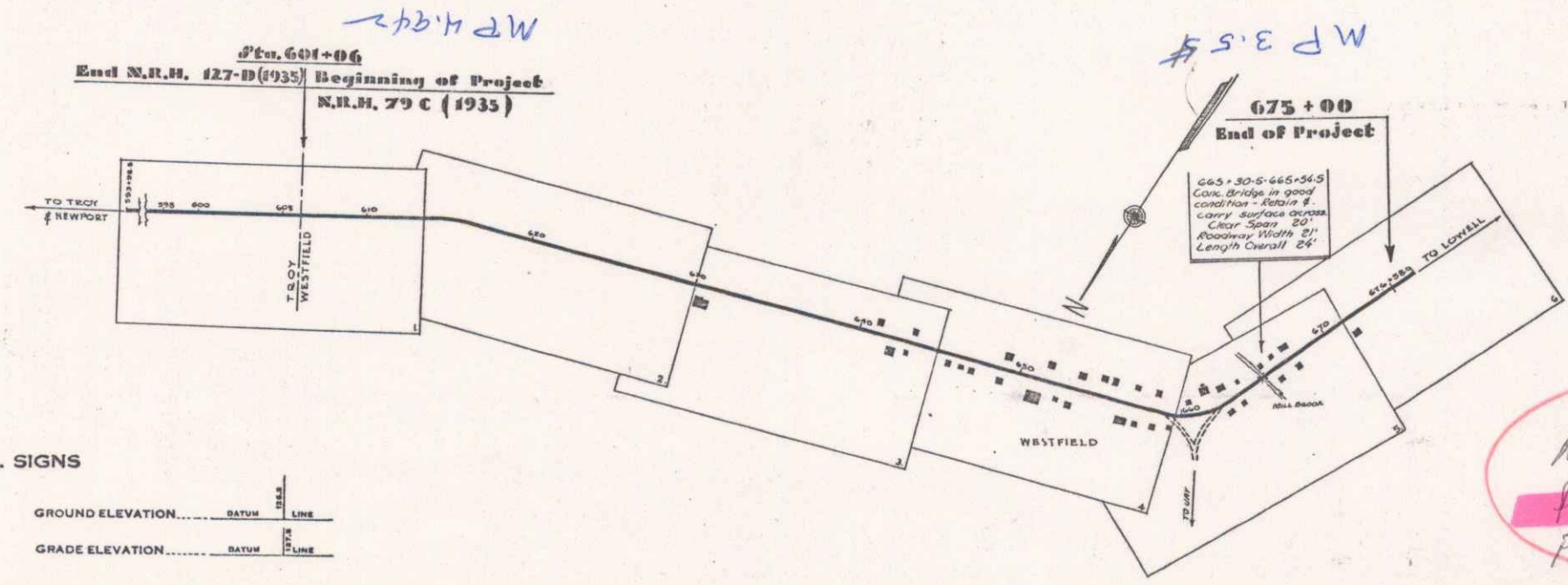
PLAN AND PROFILE OF PROPOSED
STATE HIGHWAY

TOWN OF WESTFIELD.....
NEWPORT - LOWELL ROAD

FROM THE TROY-WESTFIELD TOWN LINE SOUTH-
WESTERLY TO A POINT 1000 FT. SOUTH OF MILL
BROOK BRIDGE
LENGTH OF PROJECT 7392.5 FT. = 1.400 MILES



(To Be Returned to H.O.M. Division)
TOWN OF WESTFIELD
PERMIT
TOWN FILE
RIGHT-OF-WAY DIVISION



CONVENTIONAL SIGNS

COUNTY LINE	GROUND ELEVATION
TOWN LINE	GRADE ELEVATION
FENCE LINE	
STONE WALL	
UNFENCED PROPERTY	
GUARD RAIL	
TRAVELED WAY	
RAILROAD	
RETAINING WALL	
CENTER LINE	
SURVEY LINE	
CULVERT	
DROP INLET	
TROLLEY POLE	
POWER POLE	
TELEPHONE POLE	
TREES	
HEDGE	

CURVE DATA

DEFLECTION ANGLE	Δ
DEGREE OF CURVE	D
RADIUS OF CURVE	R
TANGENT DISTANCE	T
LENGTH OF CURVE	L
EXTERNAL DISTANCE	E
POINT OF INTERSECTION	P. I.
POINT OF CURVE	P. C.
POINT OF TANGENT	P. T.
POINT ON TANGENT	P. O. T.

SCALE

TITLE PAGE	1" = 500 FT.
PLANS	1" = 50 FT.
PROFILE	1" = 10 FT.
CROSS SECTIONS	1" = 5 FT.

NOTE
These plans are subject to such revisions as may be required by the Bureau of Public Roads and the Commissioner of Highways. Construction is to be carried on in accordance with the plans and standard road and bridge specifications of 1930 including all subsequent approved revisions, the National Recovery Act special provisions, and such revised specifications and special provisions as are submitted with the plans.

ROUTE: VT 100
PIN: 000644
PROJECT: NRH 79C(1935)

APPROVED: January 17, 1935
W. H. ...
COMMISSIONER OF HIGHWAYS
SUBMITTED BY ORDER OF THE STATE HIGHWAY DEPARTMENT

RECOMMENDED _____
DISTRICT ENGINEER BUREAU OF PUBLIC ROADS

RECOMMENDED FOR APPROVAL _____
CHIEF ENGINEER OF PUBLIC ROADS

APPROVED _____
DIRECTOR BUREAU OF PUBLIC ROADS

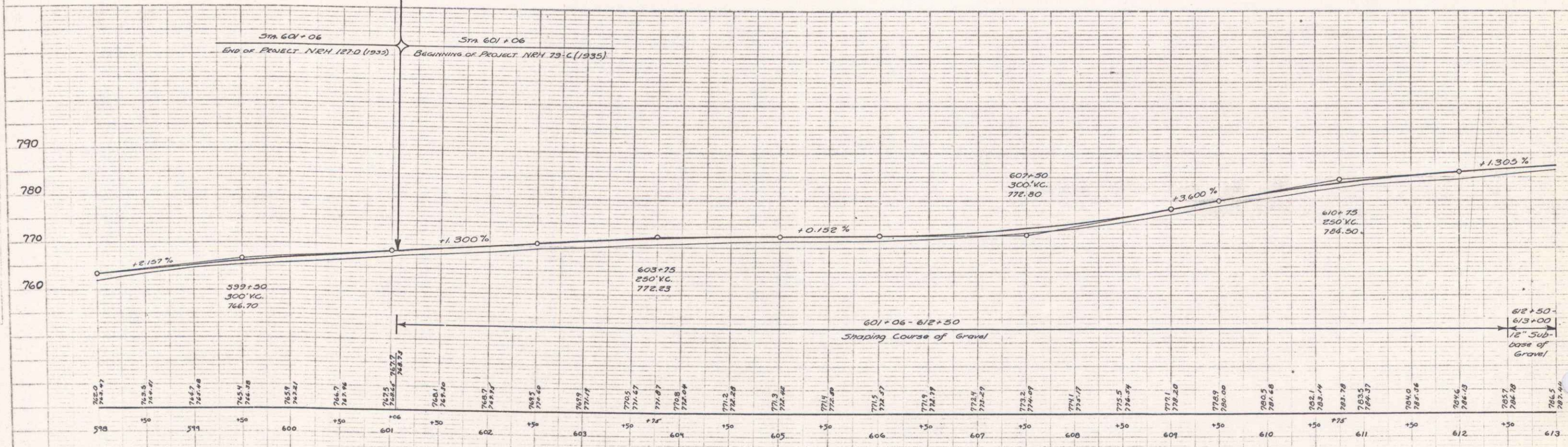
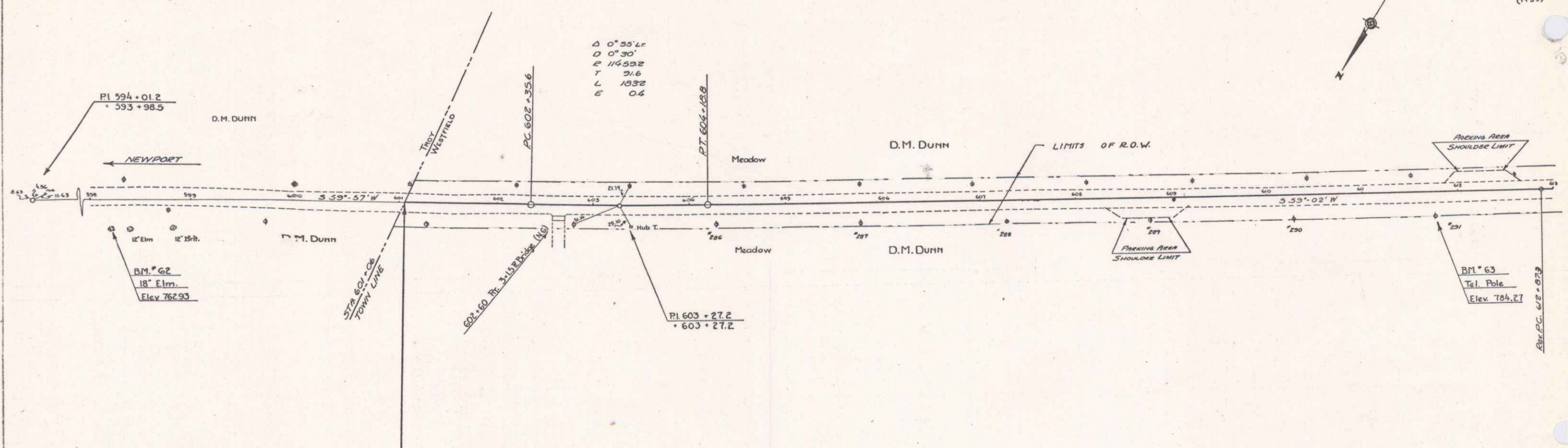
CORRECT: JANUARY 17, 1935
W. H. ...
ROAD ENGINEER

SERIES 4474 NO. 78
SHEET 1 OF 29
FILED 1935

DIS. # 9 PLANS

PLAN
 LEACH
 12 31
 12 31

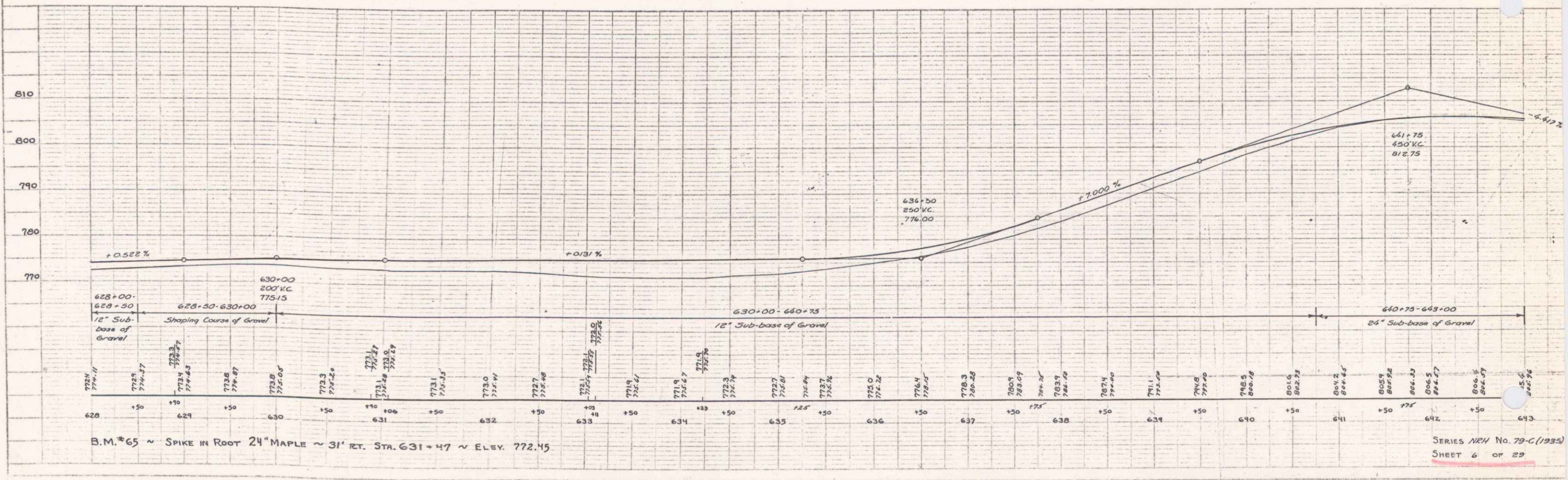
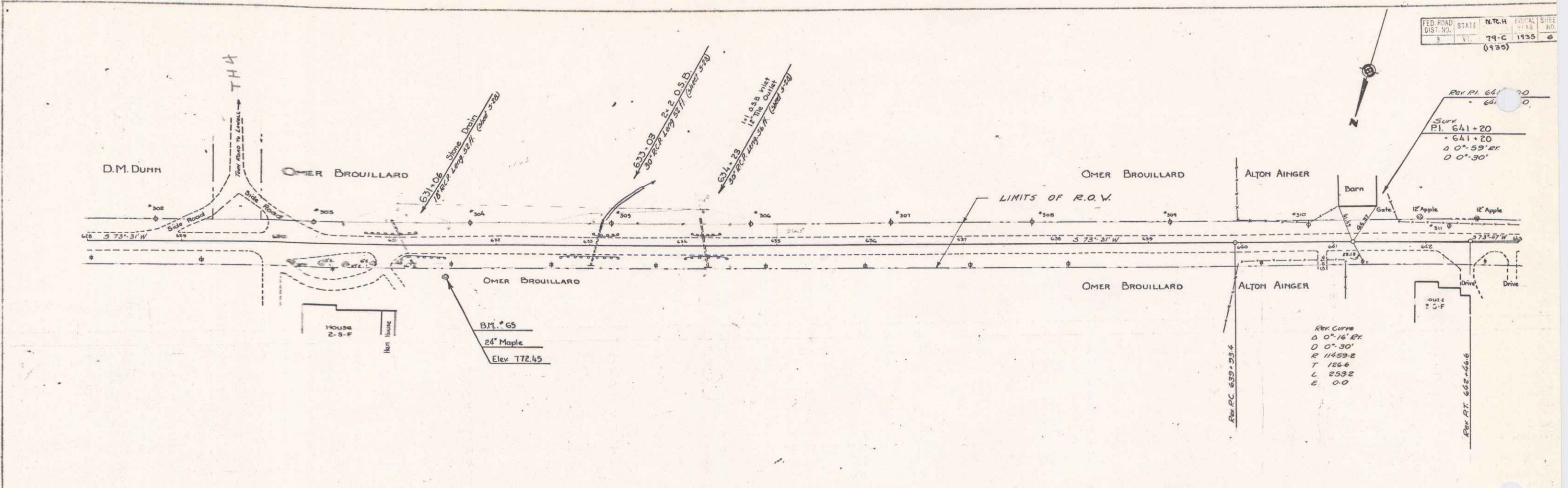
LEACH
 THOMAS
 12 31
 12 31



B.M. # 62 ~ SPIKE IN MASON 18" ELN ~ 28' W. STA. 598+25 ~ Elev. 762.93
 B.M. # 63 ~ SPIKE IN TEL. POLE #211 ~ 25' W. STA. 611+77 ~ Elev. 764.27

PLAN
 12 3/4"
 12 3/4"
 LEACH
 BROWN

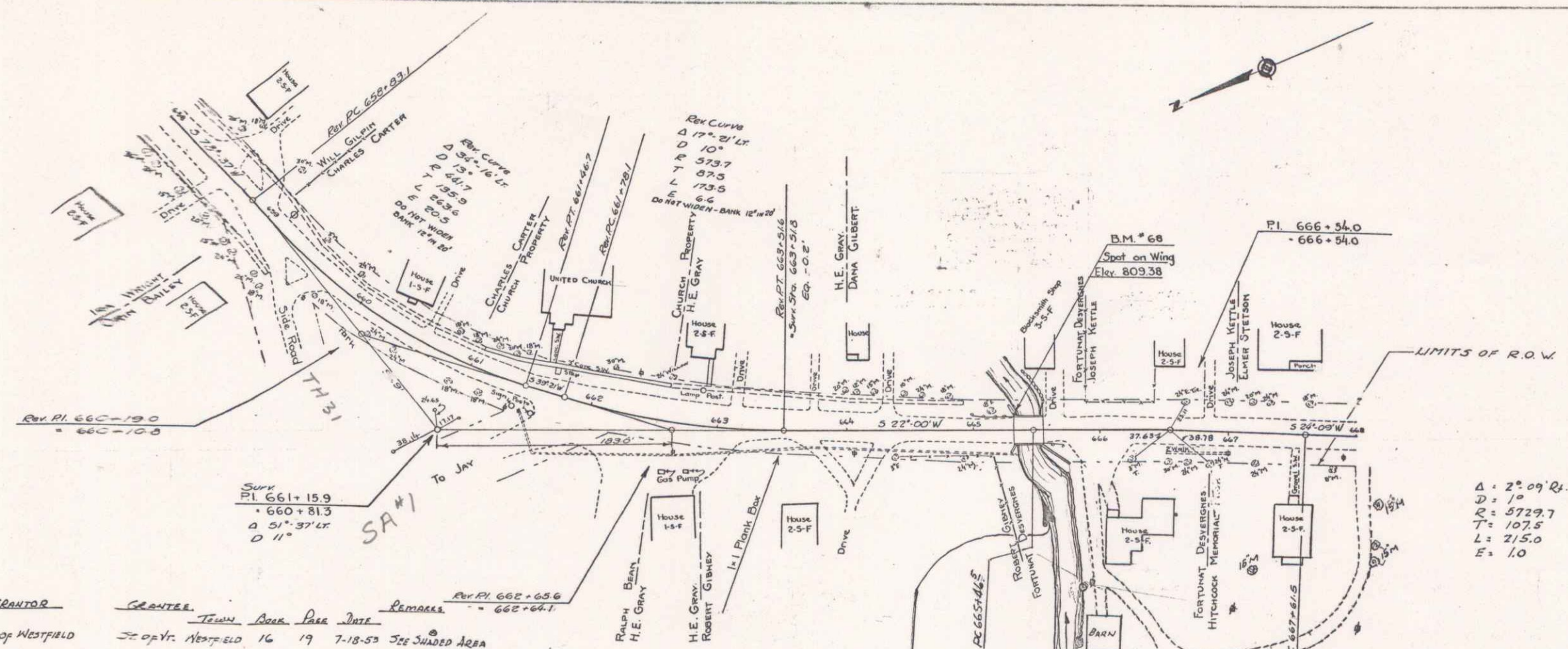
PROFILE
 12 3/4"
 12 3/4"
 LEACH
 BROWN



B.M. #65 ~ SPIKE IN ROOT 24" MAPLE ~ 31' RT. STR. 631+47 ~ ELEV. 772.45

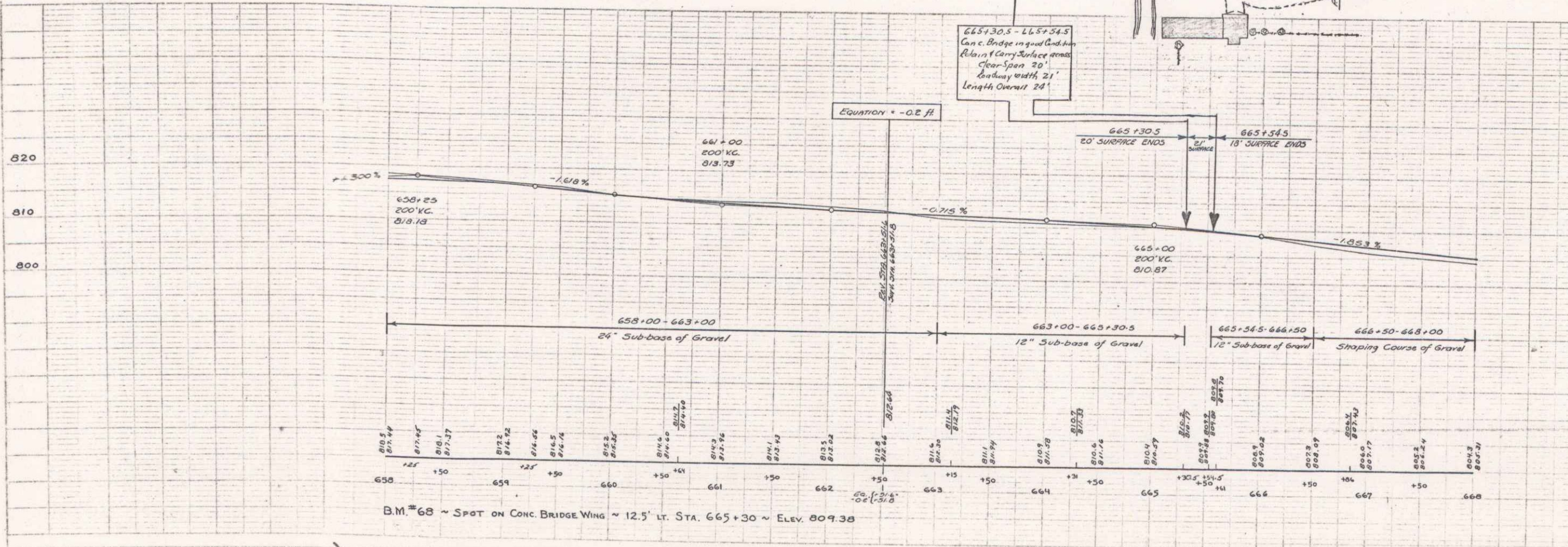
PLAN
NOTE: SEE SHEET 79-C(193) FOR PLAN LOCATIONS

LEACH
TRONAP
10-23



PARCEL	INSTRUMENT	DATE	GRANTOR	GRANTEE	TOWN	BOOK	PAGE	DATE	REMARKS
6	W0	7-1-53	TOWN OF WESTFIELD	J. E. GRAY	WESTFIELD	16	19	7-18-53	SEE SHARED AREA

$\Delta = 2^{\circ} 09' R.$
 $D = 10$
 $E = 572.7$
 $L = 107.5$
 $E = 1.0$



B.M. #68 ~ SPOT ON CONC. BRIDGE WING ~ 12.5' LT. STA. 665+30 ~ ELEV. 809.38

6

