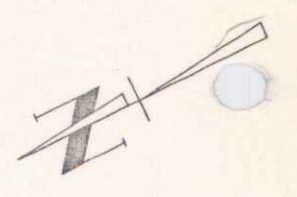
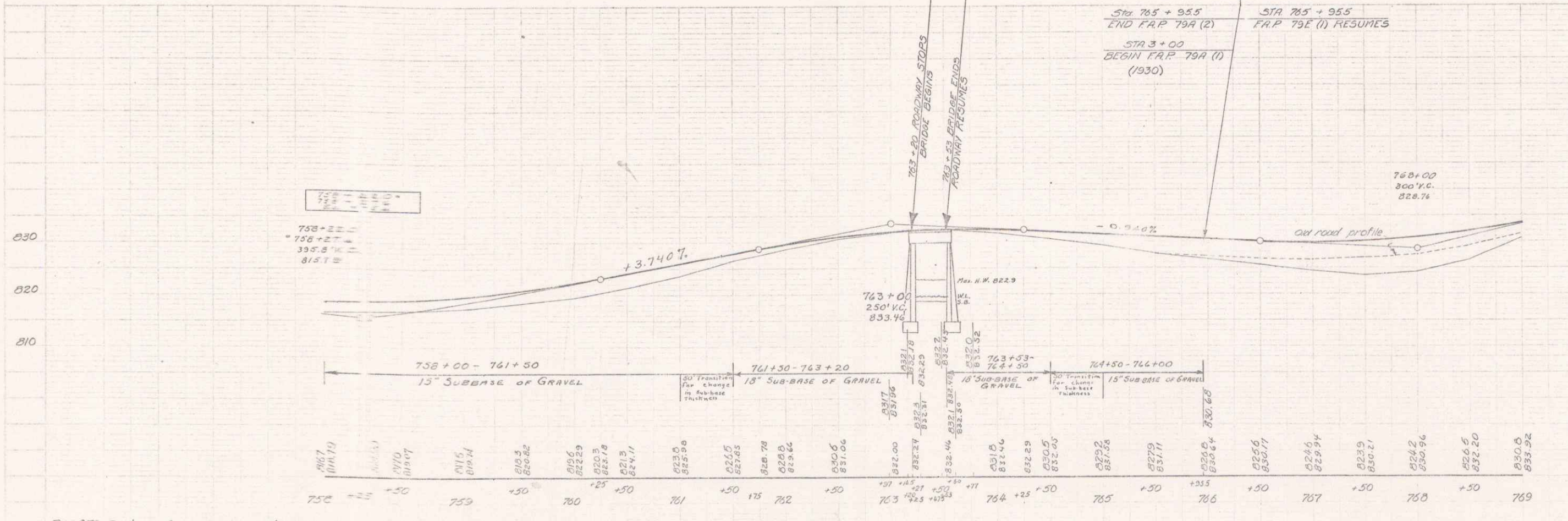
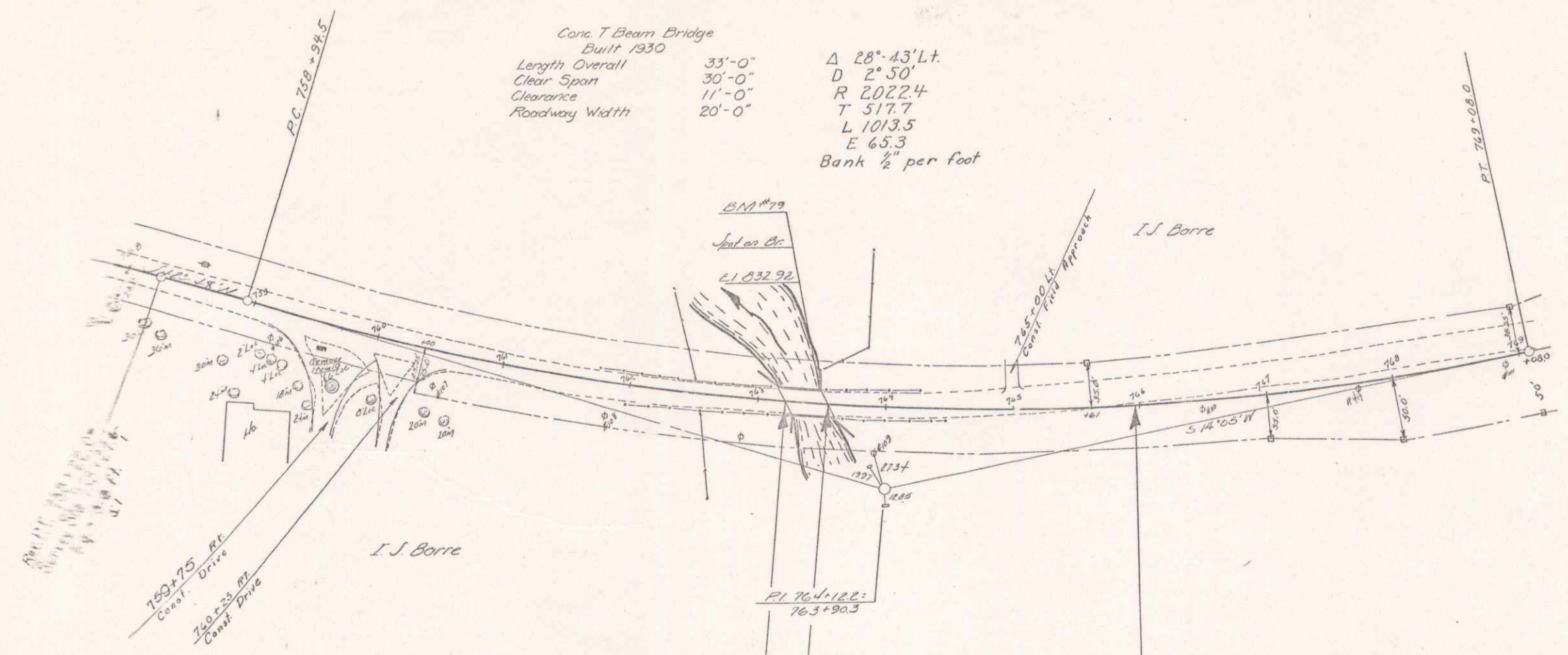


Conc. T Beam Bridge  
 Built 1930  
 Length Overall 33'-0"    Δ 28°-43' Lt.  
 Clear Span 30'-0"        D 2°-50'  
 Clearance 11'-0"         R 2022.4  
 Roadway Width 20'-0"    L 1013.5  
    E 65.3  
    Bank 1/2 per foot



F. J. Kelly  
 L. Davis  
 Haced



B.P. 79 Spot on Conc. Bridge 112' Lt. Sta. 763+08 Elev. 832.92