

INDEX OF SHEETS	
SHEET NO.	TITLE PAGE
1	TITLE PAGE
2	TYPICAL CROSS-SECTION OF IMPROVEMENT
3	BANKING AND WIDENING TABLES
4	PLAN AND PROFILE STA
5	Standard Structure Sheet S-31: Boundary Markers
6	Standard Structure Sheets S-40: Barricades, Signs, and Lights
7	Standard Structure Sheet S-41: Rounding of Cut Slopes
8-9	Cross-sections

Standard Structure Sheets Approved
by the Chief Engineer

5-28	July 11, 1933
5-30	Aug 13, 1934
5-31	July 25, 1934

(To Be Returned To R.O.W. Division)
 Form of Vt 100
 PERMIT
 TOWN FILE
 RIGHT-OF-WAY DIVISION

STATE OF VERMONT
STATE HIGHWAY DEPARTMENT

PLAN AND PROFILE OF PROPOSED
STATE HIGHWAY

FEDERAL AID PROJECT

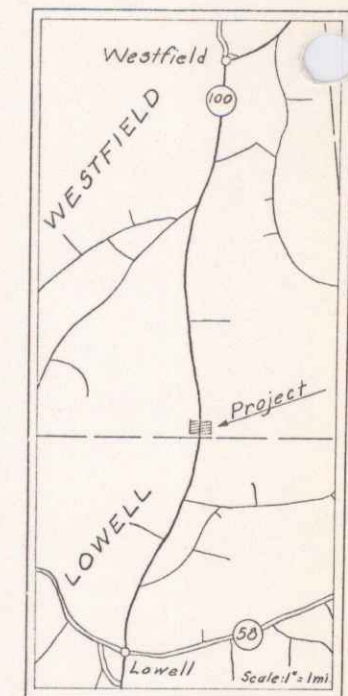
TOWN OF WESTFIELD

MORRISVILLE--NEWPORT ROAD

BEGINNING AT A POINT 900.5 FEET NORTHEASTERLY OF THE WESTFIELD-
LOWELL TOWN LINE AND EXTENDING 0.132 MILES ON ROUTE 100

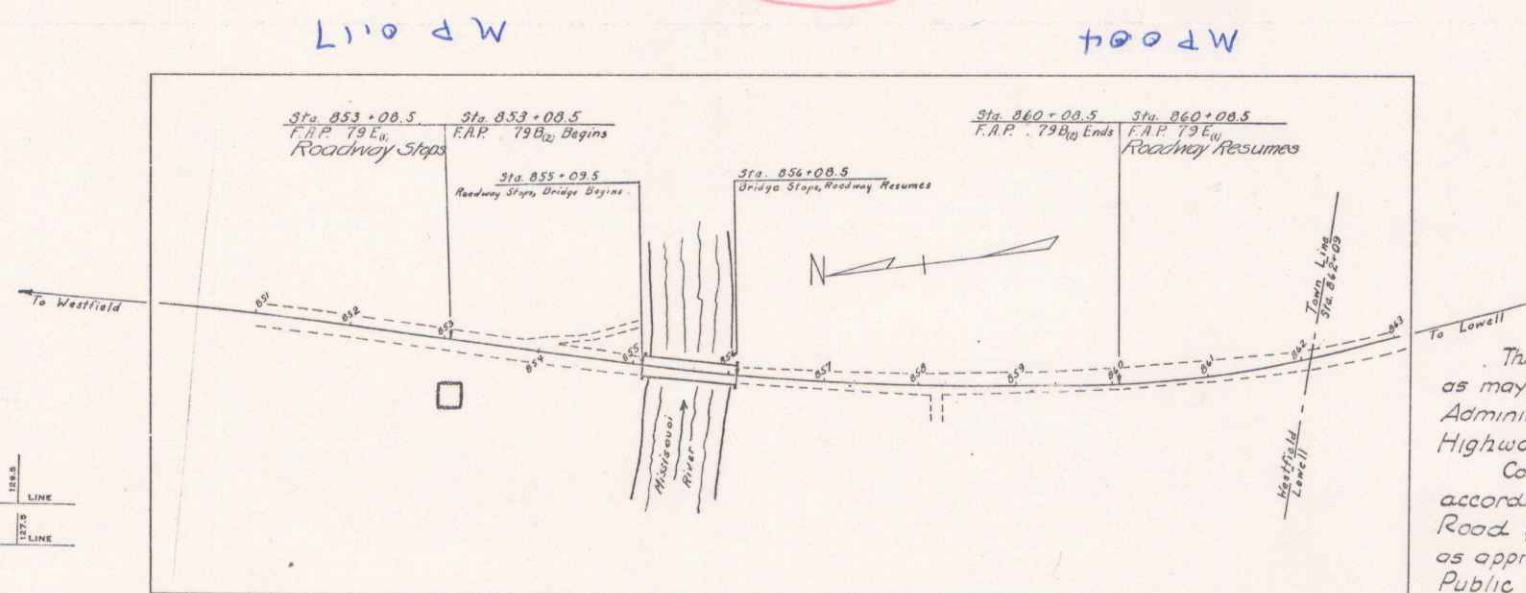
LENGTH OF PROJECT: 601.0 FEET = 0.113 MILES

FED. ROAD DIST. NO.	STATE	FED. AID PROJ. NO.	FISCAL YEAR	SHEET NO.	TOTAL SHEETS
9	Vt.	79 B(2)	1941	1	9



ROUTE VT 100
 PROJECT: FAP 79 B(2)
 DATE: 10/14/1940
 PIN: 002641

RECORD PLANS



CONVENTIONAL SIGNS	
COUNTY LINE	GROUND ELEVATION DATUM
TOWN LINE	GRADE ELEVATION DATUM
FENCE LINE	
STONE WALL	
UNFENCED PROPERTY	
GUARD RAIL	
TRAVELED WAY	
RAILROAD	
RETAINING WALL	
CENTER LINE	
SURVEY LINE	
CULVERT	
DROP INLET	
TROLLEY POLE	
POWER POLE	
TELEPHONE POLE	
TREES	
HEDGE	

RECORD PLANS
 WESTFIELD - FAP 79 B(2)
 County - Lambert & George

CURVE DATA	
DEFLECTION ANGLE	Δ
DEGREE OF CURVE	D
RADIUS OF CURVE	R
TANGENT DISTANCE	T
LENGTH OF CURVE	L
EXTERNAL DISTANCE	E
POINT OF INTERSECTION	P. I.
POINT OF CURVE	P. C.
POINT OF TANGENT	P. T.
POINT ON TANGENT	P. O. T.

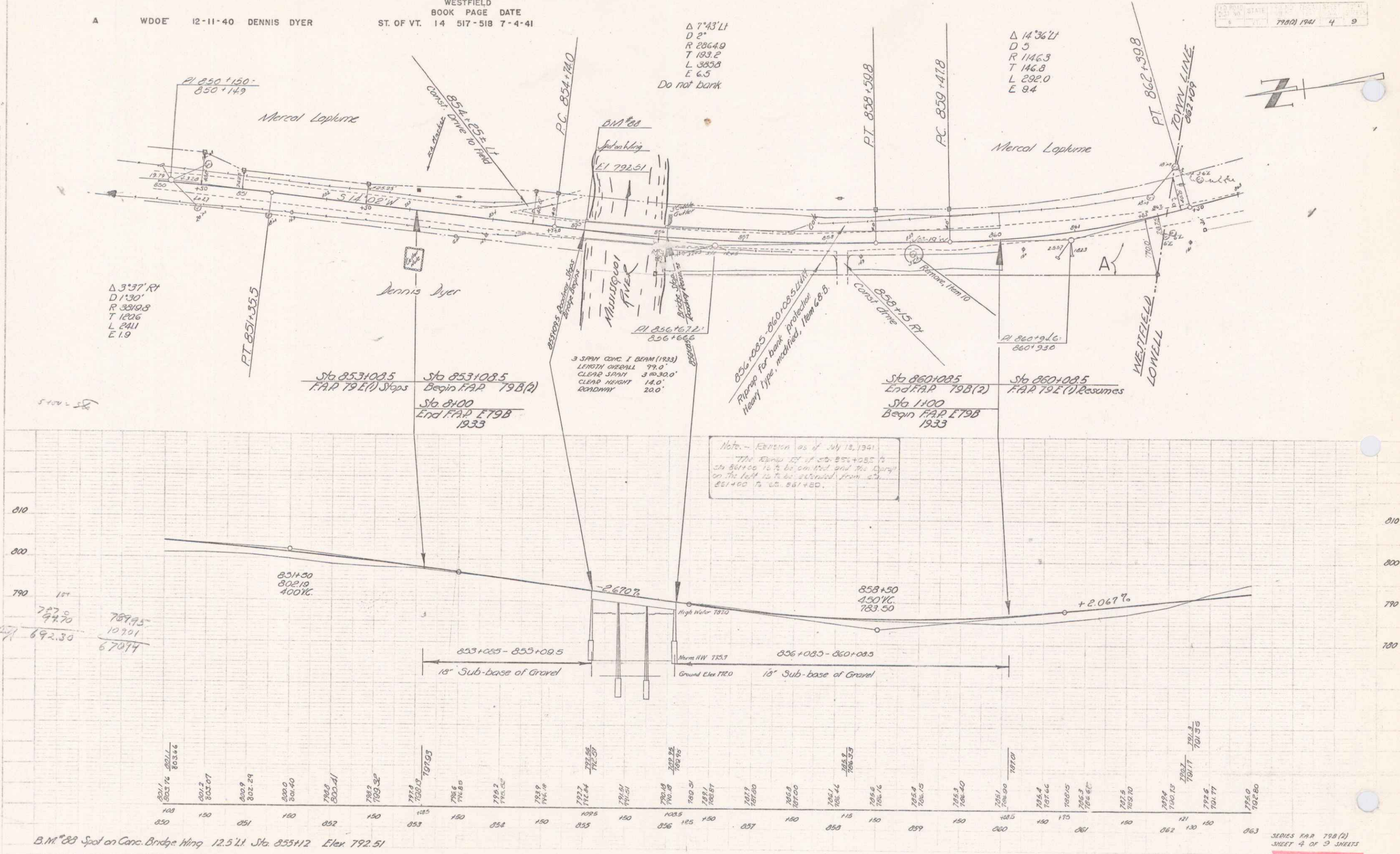
APPROVED: *[Signature]*
 COMMISSIONER OF HIGHWAYS
 SUBMITTED BY ORDER OF THE STATE HIGHWAY BOARD

These plans are subject to such revisions as may be required by the Public Roads Administration or the Commissioner of Highways.
 Construction is to be carried on in accordance with the plans and the Standard Road & Bridge Specifications of 1936, as approved December 29th, 1936, by the Public Roads Administration, including all subsequent approved revisions and such revised specifications and special provisions as are submitted with the plans.

Approved: <i>[Signature]</i> 1940 ROAD ENGINEER	Approved: <i>[Signature]</i> 1940 DISTRICT HIGHWAY COMMISSIONER	SERIES FAP NO. 79-B(2) FILED SHEET 1 OF 9
--	--	--

PARCEL	INSTRUMENT	DATE	GRANTOR	GRANTEE	RECORDED WESTFIELD	REMARKS
A	WDOE	12-11-40	DENNIS DYER	ST. OF VT.	BOOK PAGE DATE 14 517-518 7-4-41	

798(1) 1941 4 9



B.M. 88 Spot on Conc. Bridge Wing 12.5.41 Sta. 855+12 Elev. 792.51

SERIES PAP 798(2)
SHEET 4 OF 9 SHEETS