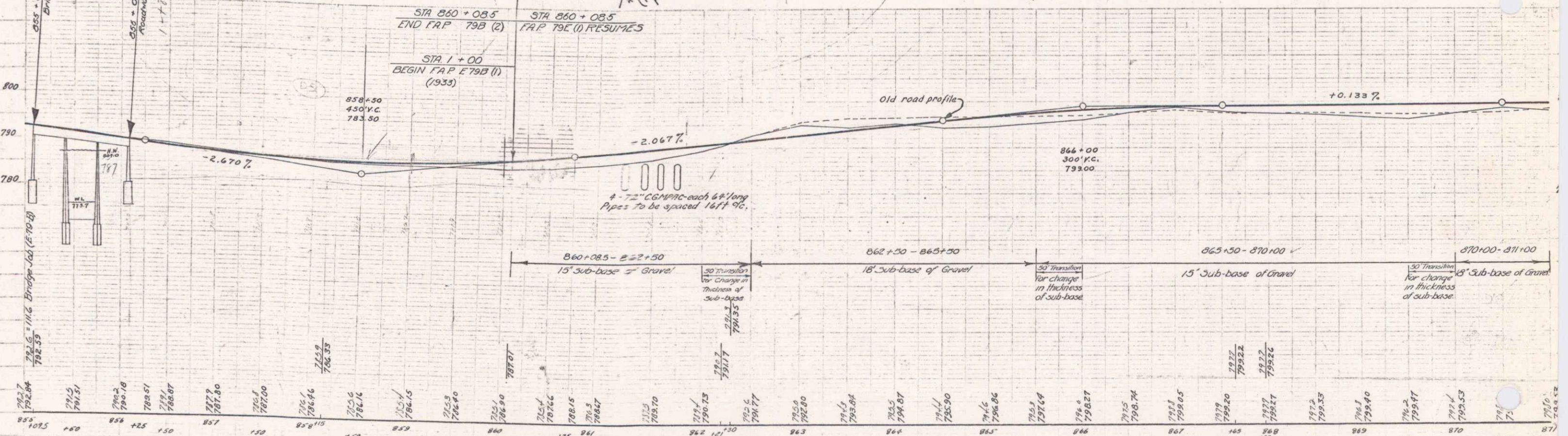
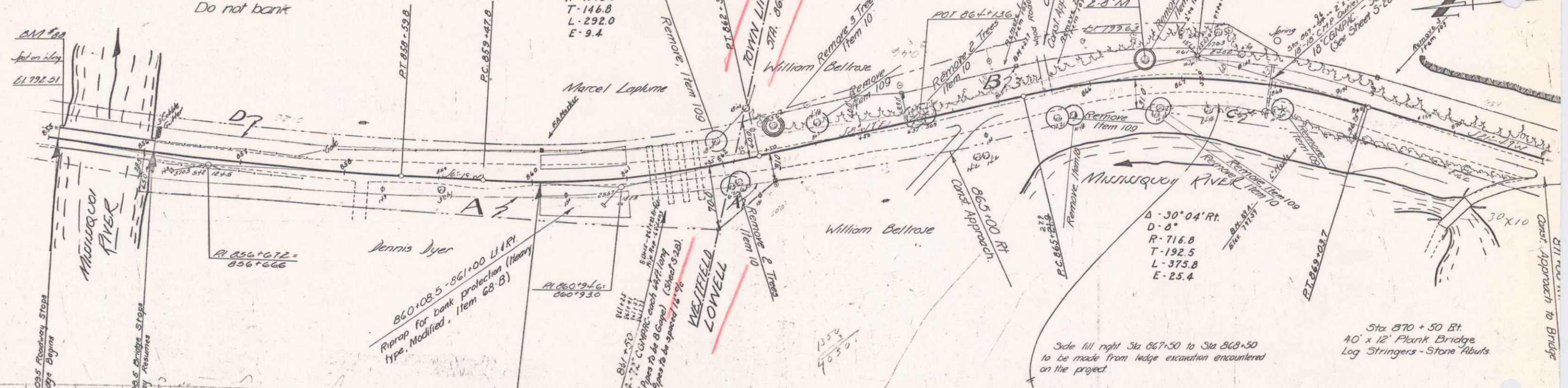


3 Span Conc. I Beam Bridge $\Delta - 7' \cdot 43''$ Lt.
 Built 1933.
 Length Overall 99'-0" D - 2"
 Clear Span 3 @ 30'-0" R - 2864.3
 Clearance 14'-0" T - 193.2
 Roadway Width 20'-0" L - 385.8
 E - 6.5

PARCEL INSTRUMENT	DATE	GRANTOR	GRANTEE	RECORDED WESTFIELD	REMARKS
D	W.D.O.E. 12-11-40	MARCEL & JOSEPH LAPUME	ST. OF RT.	BOOK PAGE DATE 430 1 12-27-40	CULY STA 861+50
A	W.D.O.E. 12-11-40	DENNIS DYER	ST. OF RT.	14 517-9 7-6-41	BOOK PAGE DATE 14 516 10-6-41
A.B.C.	W.D.O.E. 12-11-40	WILLIAM BELLEVOISE	ST. OF RT.	BOOK PAGE DATE 20 325-6 12-28-40	LOWELL

$\Delta - 14' \cdot 36''$ Lt.
 D - 5"
 R - 1146.3
 T - 146.8
 L - 292.0
 E - 9.4



Sub-base details:
 860+08.5 - 862+50: 15' Sub-base of Gravel
 862+50 - 865+50: 18' Sub-base of Gravel
 865+50 - 870+00: 15' Sub-base of Gravel
 870+00 - 871+00: 15' Sub-base of Gravel

BM #88 Spot on Conc. Bridge Wing 12.5' Lt. Sta. 855+12 Elev. 792.51
 BM #89 Spike in Trunk of Twin 8' Maples 19' Lt. Sta. 866+60 Elev. 799.63