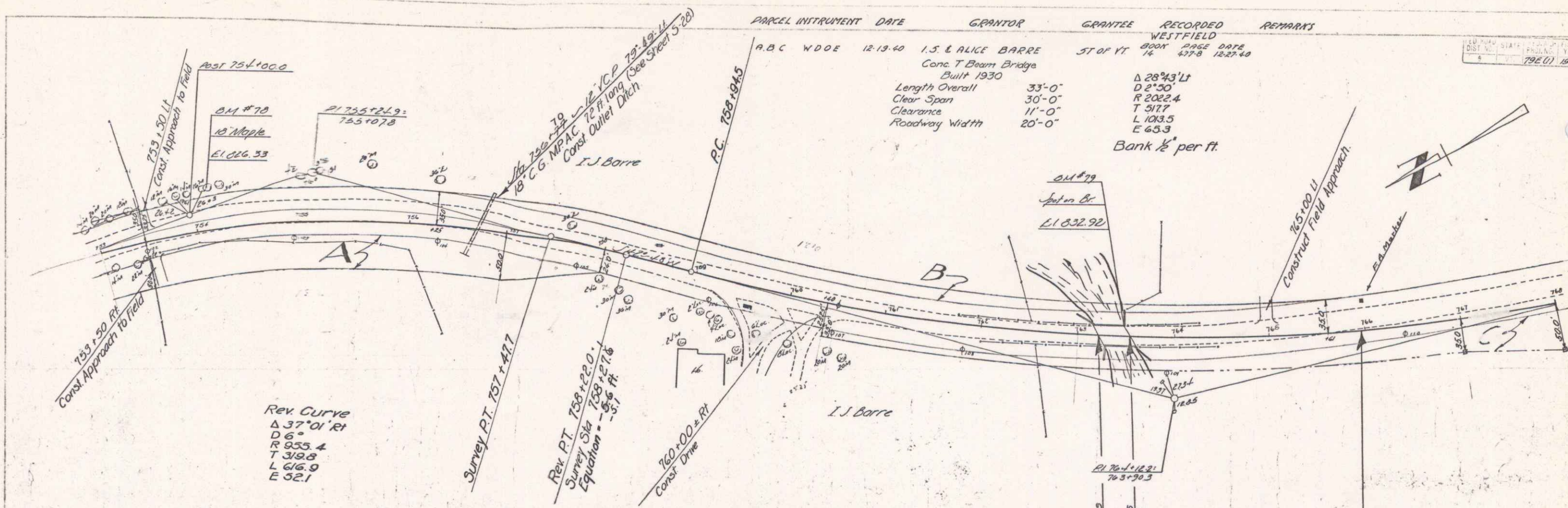


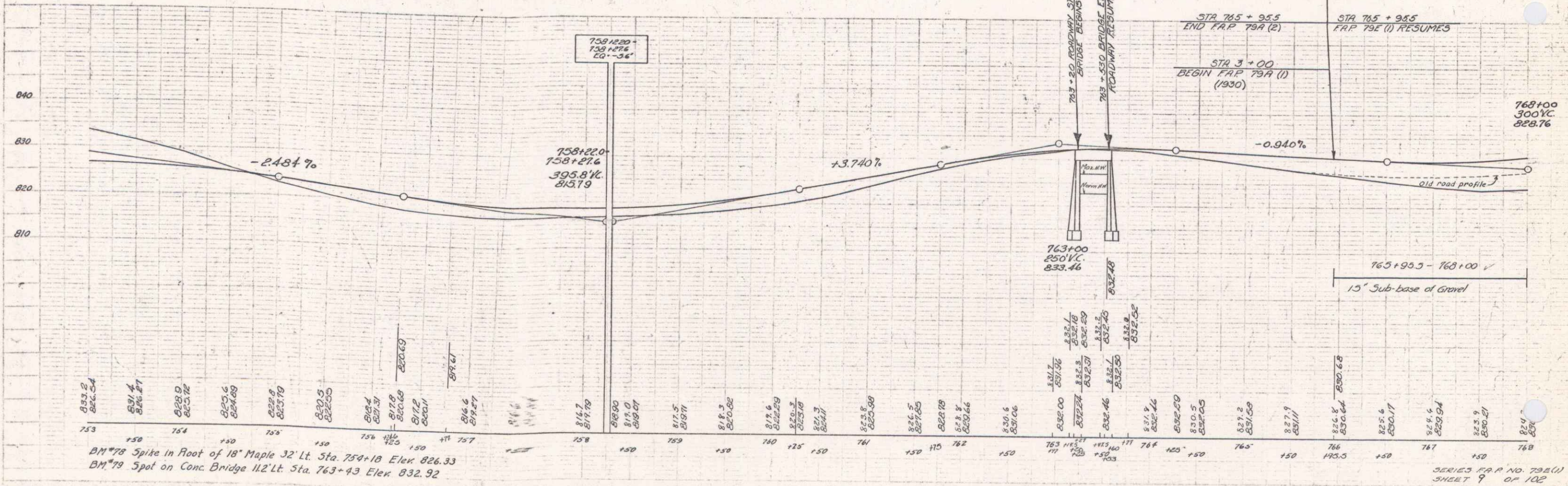
PLAN
 1/4" = 100'
 I. Lavin

ELEVATION
 1/4" = 10'



PARCEL INSTRUMENT DATE	GRANTOR	GRANTEE	RECORDED	REMARKS
12-19-40	I.S. & ALICE BARRE	ST OF VT	WESTFIELD	
			BOOK PAGE DATE	
			14 437-B 12-27-69	
				Δ 28° 43' Lt
				D 2° 50'
				R 2022.4
				T 5177
				L 103.5
				E 65.3
				Bank 1/2 per ft.

14 NEW STATE PLANS SHEET NO. SHEET
 195 (1) 1941 9 70



BM #78 Spike in Root of 18" Maple 32' Lt. Sta. 754+18 Elev. 826.33
 BM #79 Spot on Conc. Bridge 112' Lt. Sta. 763+93 Elev. 832.92

SERIES P.A.P. NO. 79B(1)
 SHEET 9 OF 102