

INDEX OF SHEETS

SHEET NO.	TITLE PAGE
1	TITLE PAGE
2-3	TYPICAL CROSS-SECTION OF IMPROVEMENT (24" Crushed Gravel Mixed-in-Place Surface Course, item 25; with Refined Tar, item 30)
4	BANKING AND WIDENING TABLES
5-22	PLAN AND PROFILE
23	Channel Layout (904+84.5)
24	Abutment Details
25	Details of Superstructure: S1B 24' 49" Span Square
26	Details of Box Culvert Extension (910+06.3)
27	Standard Structure Sheet S-B-3C: Cable Guard Rail
28	S-B-11 Barricades, Signs, & Lights
29	S-B-20 Details 'A' and 'L'; General Notes
30	SC-24 Box Culverts
31	SCW-2.3
32	SCW-1
33	SCW-4.5
34	S-25 Pipe Culverts
35	S-30 Guard Rail
36	S-30-A Standard Underdrains
37	S-31 Boundary Markers
38	S-40 Barricades, Signs, and Lights
39	S-41 Rounding of Slopes
40-98	Cross-sections
99	Channel sections

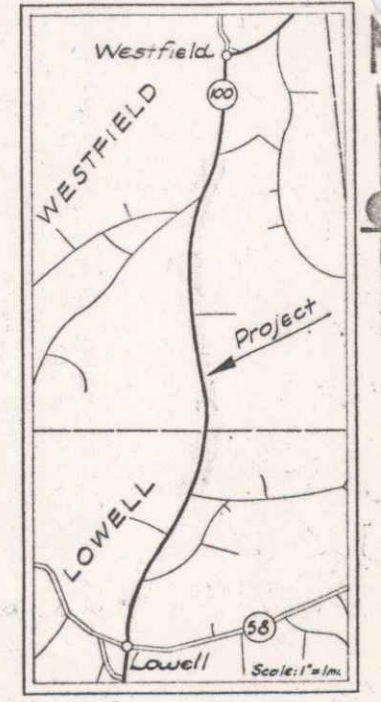
STATE OF VERMONT  
 STATE HIGHWAY DEPARTMENT  
**PLAN AND PROFILE OF PROPOSED STATE HIGHWAY**  
 FEDERAL AID PROJECT

**TOWNS OF WESTFIELD, LOWELL**  
**MORRISVILLE-NEWPORT ROAD**

BEGINNING AT A POINT 2.893 MILES NORTHEASTERLY OF THE WESTFIELD-LOWELL TOWN LINE AND EXTENDING 4.461 MILES SOUTHWESTERLY ON ROUTE 100

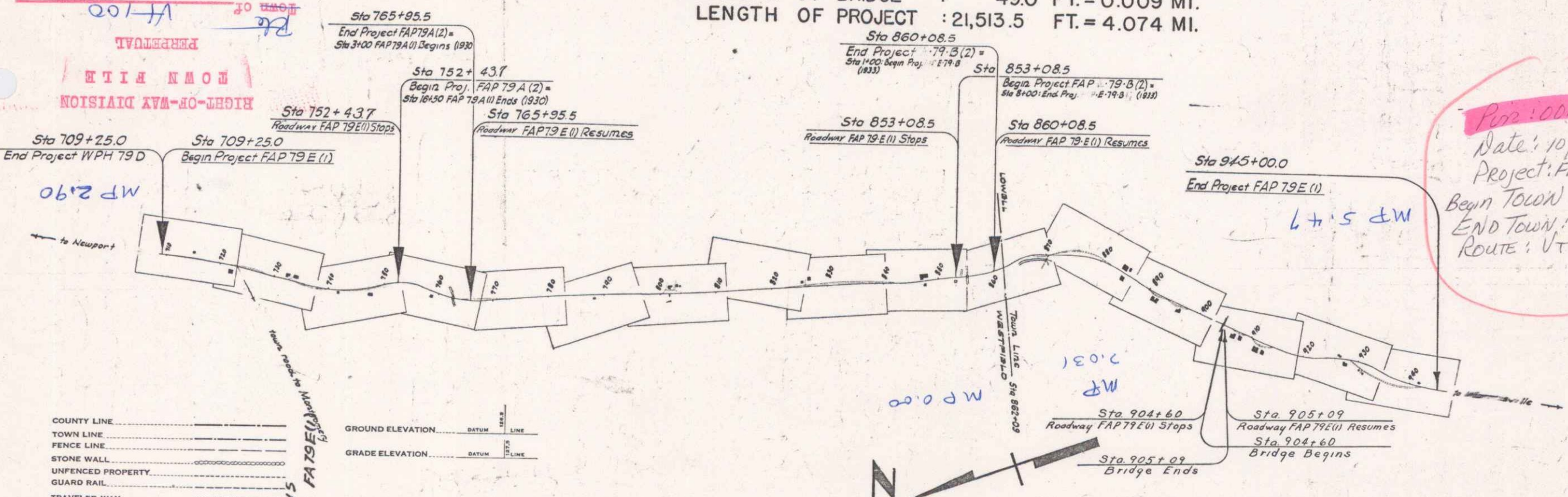
LENGTH OF ROADWAY : 21,464.5 FT. = 4.065 MI.  
 LENGTH OF BRIDGE : 49.0 FT. = 0.009 MI.  
 LENGTH OF PROJECT : 21,513.5 FT. = 4.074 MI.

FED. ROAD DIST. NO.	STATE	FED. AID PROJ. NO.	FISCAL YEAR	SHEET NO.	TOTAL SHEETS
9	Vt.	79E(1)	1940	1	1



Standard Structures Approved by the Chief Engineer:  
 5-28 July 11, 1933  
 5-30 Aug 15, 1934  
 5-31 July 25, 1934

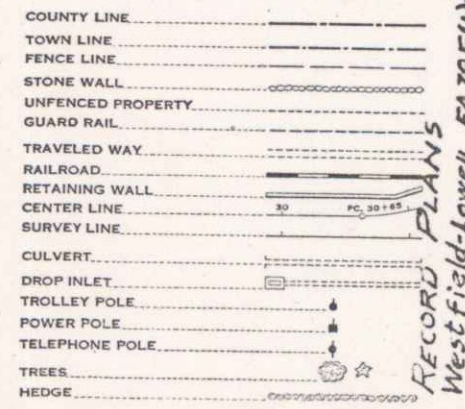
(To Be Returned to E.O.M. Division)



Pop: 000639  
 Date: 10/19/1940  
 Project: FAP 79E(1)  
 Begin Town: Westfield  
 End Town: Lowell  
 Route: VT 100

RECORD PLANS  
 W. H. Chase

APPROVED: OCT. 19, 1940  
 H. H. Langford  
 COMMISSIONER OF HIGHWAYS  
 SUBMITTED BY ORDER OF THE STATE HIGHWAY BOARD



GROUND ELEVATION DATUM LINE  
 GRADE ELEVATION DATUM LINE

CURVE DATA

DEFLECTION ANGLE	Δ
DEGREE OF CURVE	D
RADIUS OF CURVE	R
TANGENT DISTANCE	T
LENGTH OF CURVE	L
EXTERNAL DISTANCE	E
POINT OF INTERSECTION	P. I.
POINT OF CURVE	P. C.
POINT OF TANGENT	P. T.
POINT ON TANGENT	P. O. T.

SCALES

TITLE	1" = 1000'
TYPICAL	1" = 3'
PLAN	1" = 50'
PROFILE HORIZONTAL	1" = 50'
PROFILE VERTICAL	1" = 10'
CROSS SECTIONS	1" = 5'

THESE PLANS ARE SUBJECT TO SUCH REVISIONS AS MAY BE REQUIRED BY THE PUBLIC WORKS ADMINISTRATION OR THE COMMISSIONER OF HIGHWAYS.

CONSTRUCTION IS TO BE CARRIED ON IN ACCORDANCE WITH THE PLANS AND THE STANDARD ROAD AND BRIDGE SPECIFICATIONS OF 1936, AS APPROVED DECEMBER 28TH, 1936 BY THE PUBLIC WORKS ADMINISTRATION, INCLUDING ALL SUBSEQUENT APPROVED REVISIONS AND SUCH REVISIONS AS ALL SUBSEQUENT APPROVED REVISIONS AND SUCH REVISIONS AS ARE SUBMITTED WITH THE PLANS.

APPROVED OCT 17 1940  
 ROAD ENGINEER

APPROVED OCT 17 1940  
 DISTRICT HIGHWAY COMMISSIONER

SERIES FAP NO. 79E(1) FILED  
 SHEET 1 OF 102

DIST. # 9 PLANS