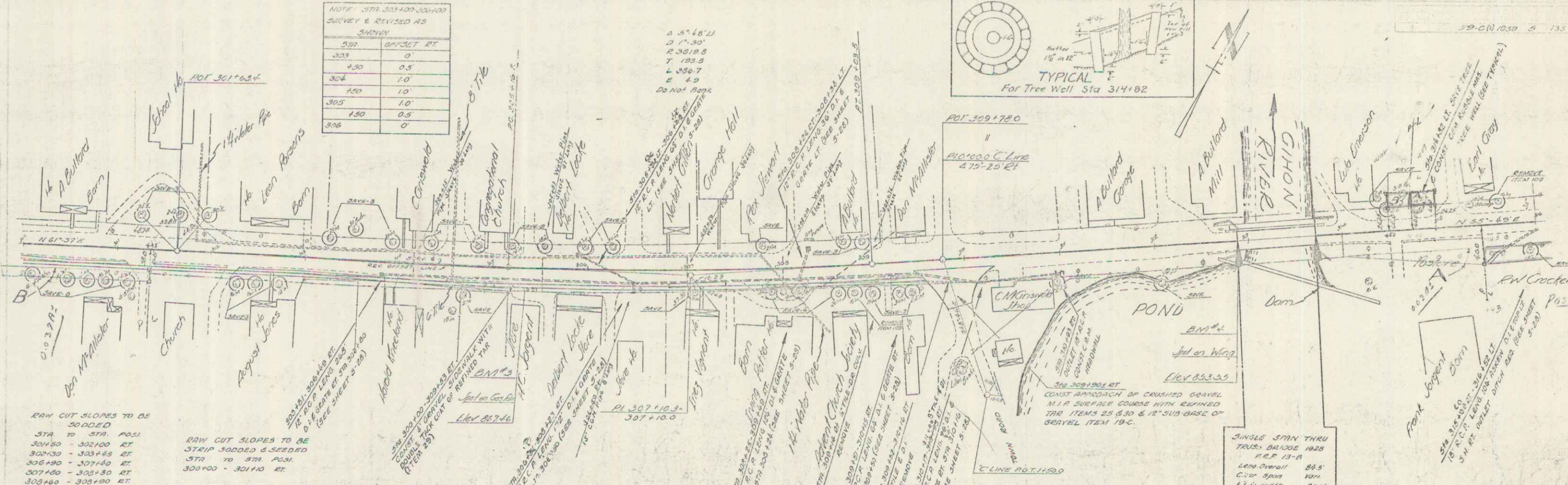
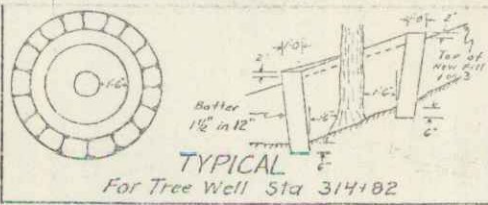


NOTE: STA 303+00 TO 304+00
SURVEY & REVISED AS
SHOWN

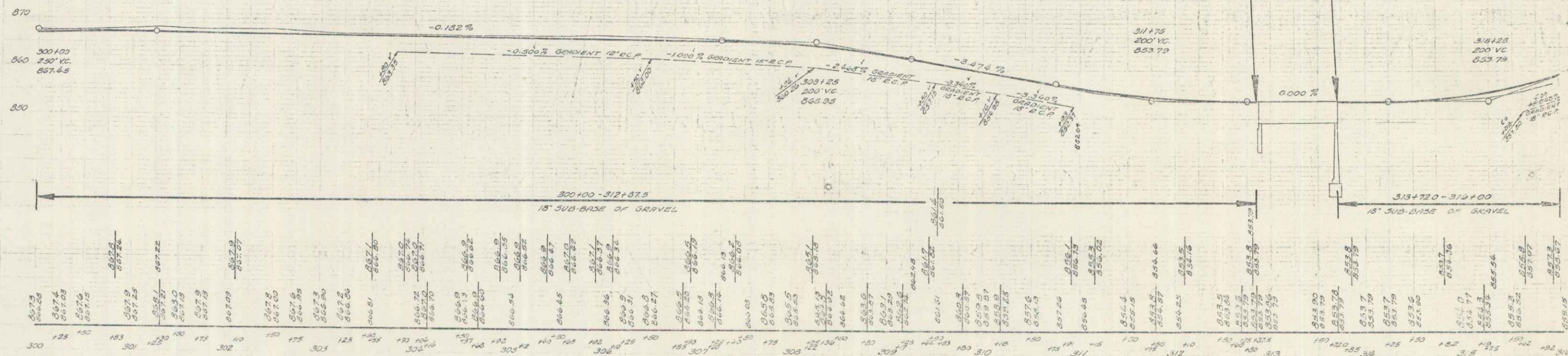
STATION	OFFSET	RT
303	0	
304	0.5	
305	1.0	
306	1.5	
307	2.0	



RAW CUT SLOPES TO BE
SOADED
STA TO STA POSL
301+50 - 302+00 RT
302+30 - 303+45 RT
303+90 - 307+40 RT
307+80 - 308+30 RT
308+80 - 309+00 RT

RAW CUT SLOPES TO BE
STRIP SOADED & SLOPED
STA TO STA POSL
301+50 - 302+00 RT
302+30 - 303+45 RT
303+90 - 307+40 RT
307+80 - 308+30 RT
308+80 - 309+00 RT

PARCEL	INHERITANCE	DATE	GRANTOR	GRANTEE	RECORDED	REMARKS
B	W.D.D.E.	5-20-40	DON'S M'ALLISTER	ST OF VT	31 265	5-21-40
B	W.D.D.E.	5-20-40	LULA EMBERTON	ST OF VT	31 261	5-21-40
A	W.D.D.E.	5-20-40	FRANK FARGENT	ST OF VT	31 219	6-4-40
A	W.D.D.E.	5-20-40	DARL LLOU GRAY	ST OF VT	31 245	5-21-40



B.M. #3 Top of Dam Pump Found - 2' RI Sta 304+34 Elev 857.44
B.M. #4 - - - - - Cont. of Wing - 14.2' - 312+88.2 - 853.83