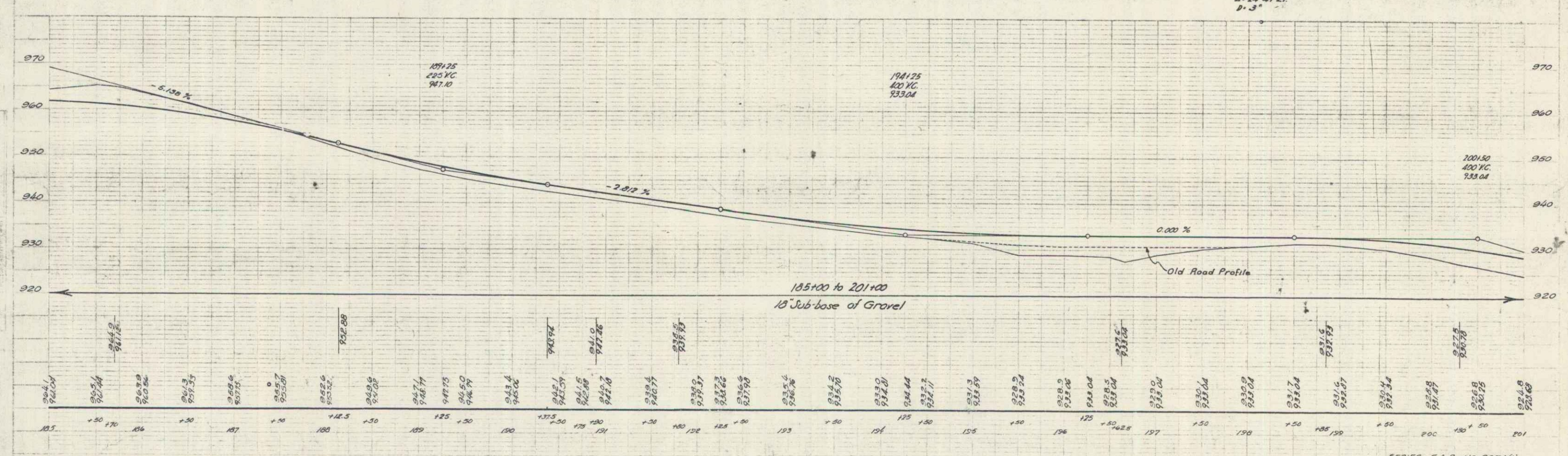
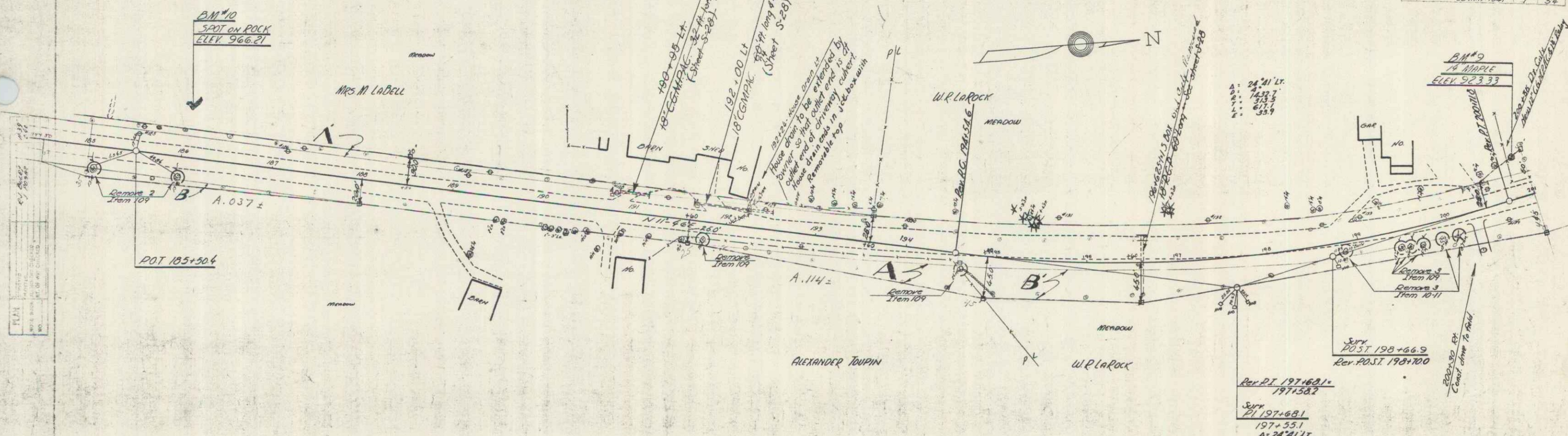


PARCEL	INSTRUMENT	DATE	GRANTOR	GRANTEE	RECORDED	REMARKS
A, B	W.D.O.E.	3-16-60	ALEXANDER & PAUL TOUPIN	ST. OF W.	325-7	3-19-60
A'	W.D.O.E.	8-13-60	MABEL LABELL	ST. OF W.	300	8-21-60
B'	W.D.O.E.	8-13-60	LENA B. LAROCK	ST. OF W.	301-2	8-21-60



BM #9 SPIKE IN ROOT OF MAPLE 30' S. 5th 100+05 Elev. 923.33  
 BM #10 SPOT ON LEASE 54' U. 5th 100+05 Elev. 966.21

SERIES R.A.P. NO. 237A(1)  
 SHEET 2 OF 4