

INDEX OF SHEETS

SHEET NO. 1	TITLE PAGE
2	TYPICAL CROSS-SECTION OF IMPROVEMENT [2] CRUSHED GRAVEL MIXED IN PLACE SURFACE COURSE WITH CUTBACK ASPHALT AND PRIME COAT OF REFINED TAR, ITEMS 26, 30 & 31
3	BANKING AND WIDENING TABLES
4-13	PLAN AND PROFILE
14	STANDARD STRUCTURE SHEET S 28 PIPE CULVERTS
15	" S 30 WOOD GUARD RAIL
16	" S 30A BOUNDARY MARKERS
17	" S 40 BARRICADES, SIGNS & LIGHTS
18	" S 41 TYPICAL GRADING CROSS SECTIONS
19	" S 49-46 SPRING MOUNTED PANEL TYPE GUARD RAIL WITH STEEL POSTS
20-43	CROSS SECTIONS

FED. ROAD DIST. NO.	STATE	FED. PROJ. NO.	FISCAL YEAR	SHEET NO.	TOTAL SHEETS
9	VT.	237(2)	1947	1	43

STATE OF VERMONT
STATE HIGHWAY DEPARTMENT

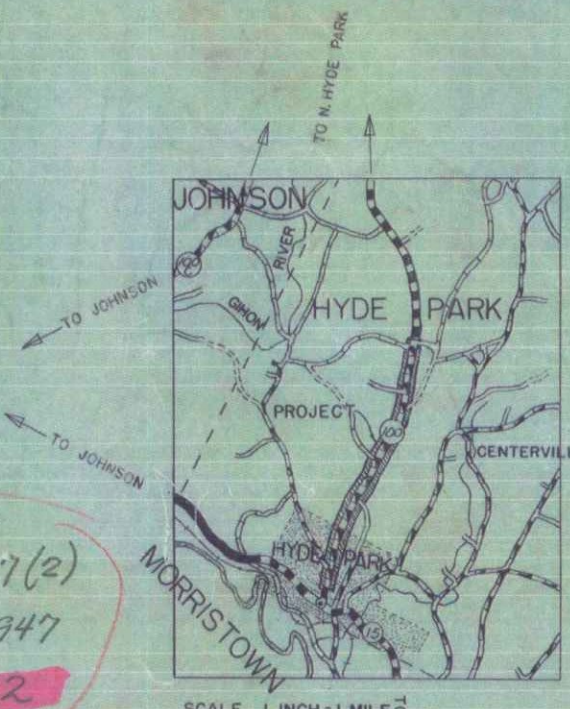
PLAN AND PROFILE OF PROPOSED
STATE HIGHWAY

FEDERAL PROJECT

TOWN OF HYDE PARK
VERMONT ROUTE 100
HYDE PARK - EDEN ROAD

STANDARD STRUCTURE SHEETS APPROVED BY THE CHIEF ENGINEER VERMONT STATE DEPARTMENT OF HIGHWAYS

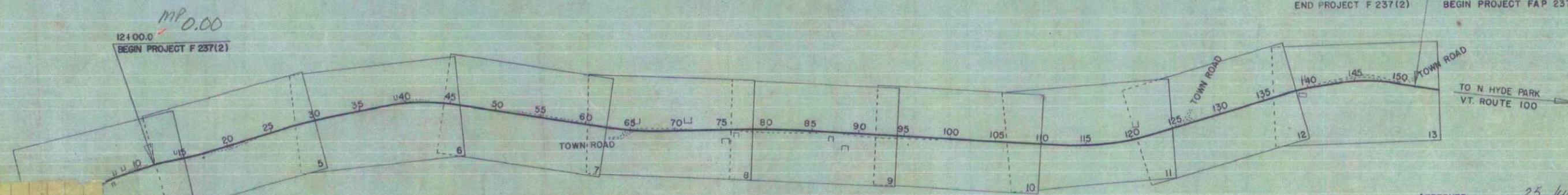
S 28	APRIL 26, 1941
S 30	MAY 12, 1941
S 30A	APRIL 19, 1941
S 40	DEC. 16, 1945
S 49-46	JAN. 13, 1947



Project: F 237(2)
Date: 01/01/1947
Pin: 00R 632

For MPO.00 - MPO.10
See Project F39(2)
Sheet 15

BEGINNING AT A POINT 1550 FEET FROM THE INTERSECTION OF VERMONT ROUTES 15 & 100 AND EXTENDING NORTHEASTERLY 14,008.3 FEET LENGTH OF PROJECT 14,008.3 FEET = 2.653 MILES



MP 2.65
END PROJECT F 237(2) 152+00.0
BEGIN PROJECT FAP 237A(1)

APPROVED: 25 July 47
H. E. Clapp
COMMISSIONER OF HIGHWAYS
SUBMITTED BY ORDER OF THE STATE HIGHWAY BOARD

COUNTY
TOWN LE
FENCE W
STONE W
UNFENC
GUARD
TRAVELE
RAILROAD
RETAINM
CENTER L
SURVEY L
CULVERT
DROP INL
TROLLEY
POWER PL
TELEPHONE POLE
TREES
HEDGE

Hyde Park
Project F 237(2)
Type 2 1/2 in Crushed Gravel M.P.

Location Vermont Route 100, 1550 ft from the intersection of Vermont Routes 15 & 100
Date: 01-01-1947
Contractor: S. V. Rossi Const. Co.
Res. Eng. - G. W. Sawyer

GROUND ELEVATION DATUM LINE
GRADE ELEVATION DATUM CURVE

CURVE DATA

DEFLECTION ANGLE	Δ
DEGREE OF CURVE	D
RADIUS OF CURVE	R
TANGENT DISTANCE	T
LENGTH OF CURVE	L
EXTERNAL DISTANCE	E
POINT OF INTERSECTION	P. I.
POINT OF CURVE	P. C.
POINT OF TANGENT	P. T.
POINT ON TANGENT	P. O. T.

SCALES

TITLE	1" = 600'
TYPICAL	1" = 2'
PLAN	1" = 50'
PROFILE	1" = 50'
CROSS SECTIONS	1" = 10'
	1" = 5'

RECORD PLANS
Hyde Park F 237(2)
Contractor - S. V. Rossi Const. Co.
Res. Eng. - G. W. Sawyer

THESE PLANS ARE SUBJECT TO SUCH REVISIONS AS MAY BE REQUIRED BY THE PUBLIC ROADS ADMINISTRATION OR THE COMMISSIONER OF HIGHWAYS.
CONSTRUCTION IS TO BE CARRIED ON IN ACCORDANCE WITH THE PLANS AND THE STANDARD ROAD AND BRIDGE SPECIFICATIONS OF 1936 AS APPROVED DECEMBER 29TH, 1936 BY THE PUBLIC ROADS ADMINISTRATION, INCLUDING ALL SUBSEQUENT APPROVED REVISIONS AND SUCH REVISED SPECIFICATIONS AND SPECIAL PROVISIONS AS ARE SUBMITTED WITH THE PLANS.

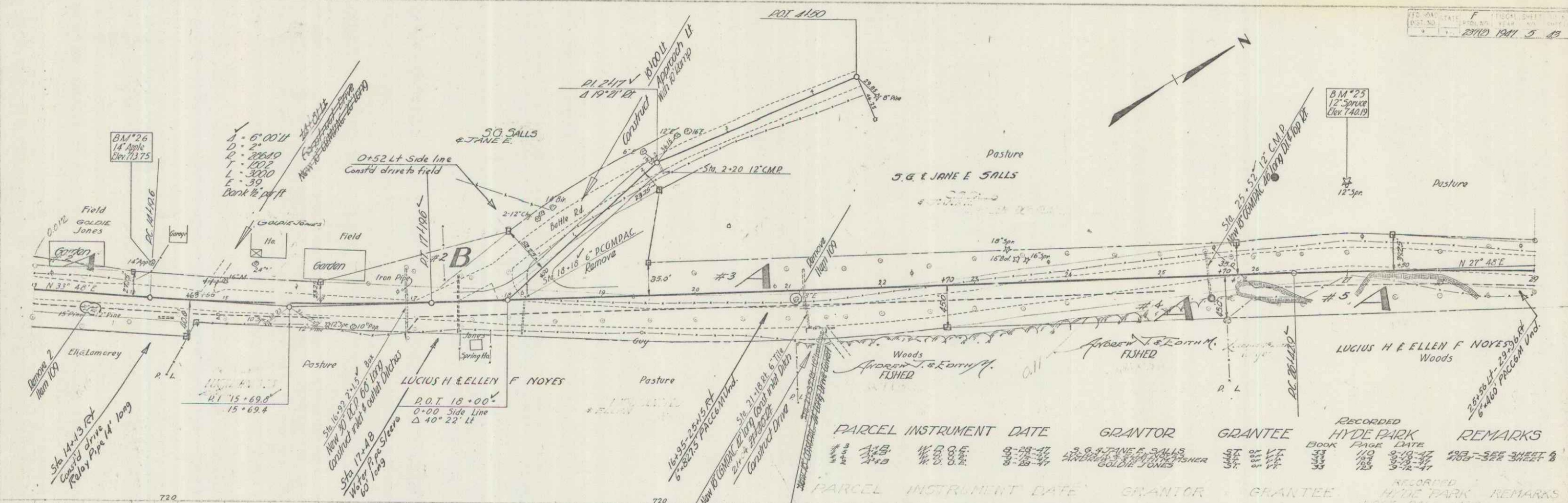
RECOMMENDED FOR APPROVAL
DISTRICT ENGINEER
PUBLIC ROADS ADMINISTRATION
FEDERAL ROAD AGENCY

APPROVED
DISTRICT ENGINEER
PUBLIC ROADS ADMINISTRATION
FEDERAL ROAD AGENCY

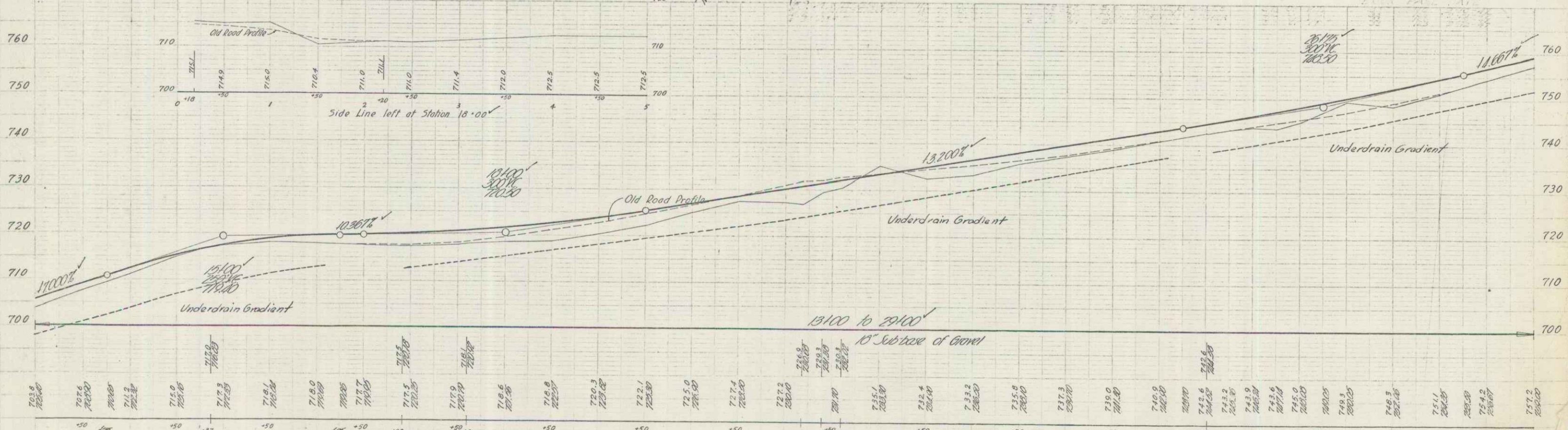
APPROVED: 25 July 47
H. E. Clapp
DISTRICT HIGHWAY ENGINEER

APPROVED: 25 July 47
H. E. Clapp
DISTRICT HIGHWAY COMMISSIONER

SERIES F NO. 237(2) FILED
SHEET 1 OF 43

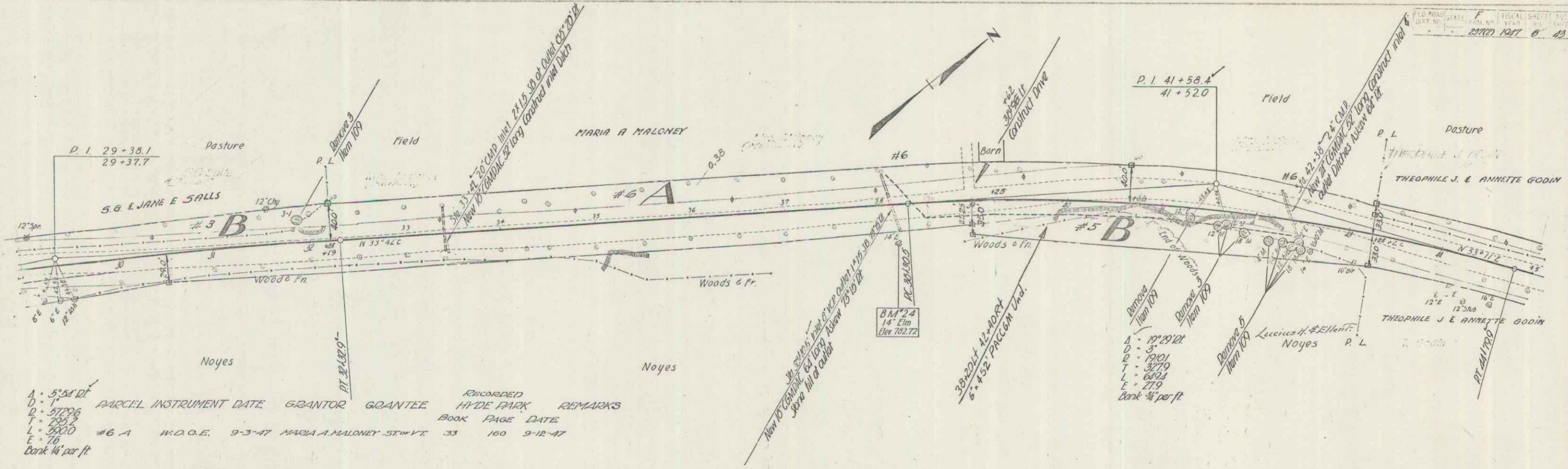


PARCEL	INSTRUMENT	DATE	GRANTOR	GRANTEE	RECORDED	HYDE PARK	REMARKS
118	W.D. 88	9-29-47	J. G. & JANE E. SALLS	W.D. 88	110	9-18-47	282-386 SHEET 8
119	W.D. 88	9-29-47	W.D. 88	W.D. 88	110	9-18-47	
120	W.D. 88	9-29-47	W.D. 88	W.D. 88	110	9-18-47	

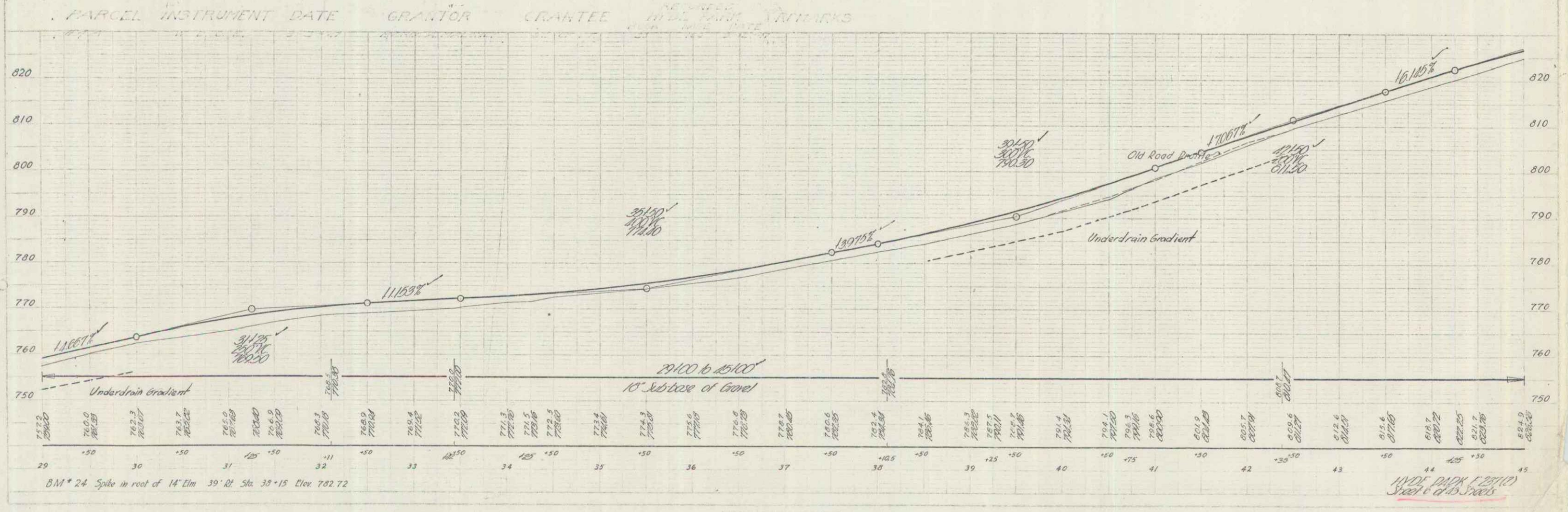


13 723.6
 14 719.4
 15 717.5
 16 718.0
 17 715.1
 18 716.6
 19 720.3
 20 722.1
 21 727.2
 22 735.1
 23 732.4
 24 737.3
 25 740.0
 26 743.9
 27 748.0
 28 748.0
 29 748.0
 30 748.0

BM *25 Spike in root of 12' Spruce 95' Lt. Sta 27+00 Elev. 740.19
 BM *26 Spike in root of 14' Apple 36' Lt. Sta. 14+10 Elev. 713.75

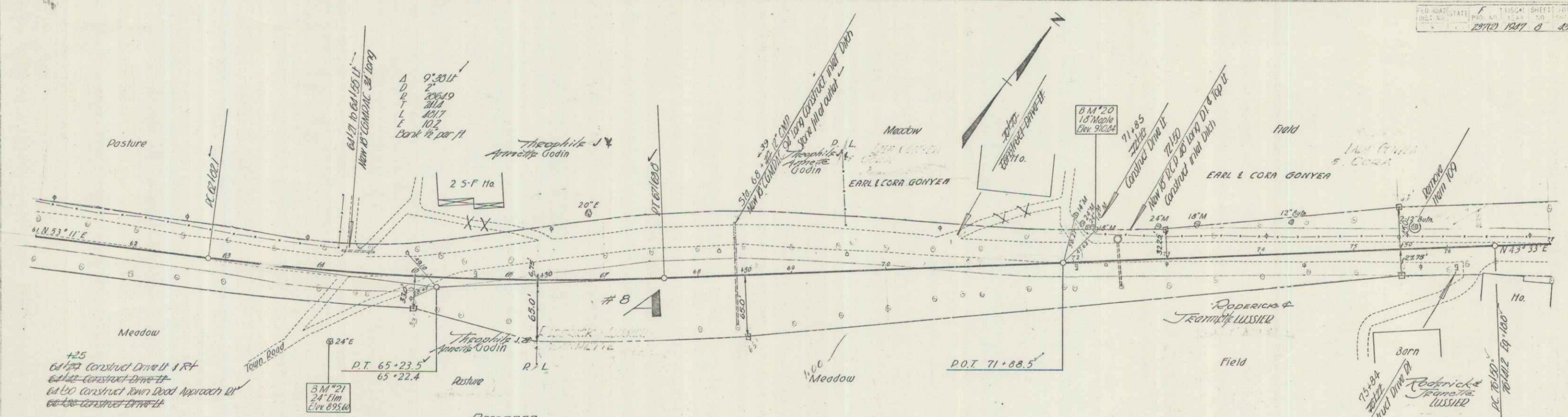


PARCEL	INSTRUMENT	DATE	GRANTOR	GRANTEE	RECORDED	HY-DE PARK	REMARKS
					BOOK	PAGE	DATE
A	5:54	1917					
D	57206						
L	5800						
E	76						
Bank 1/2 per ft							

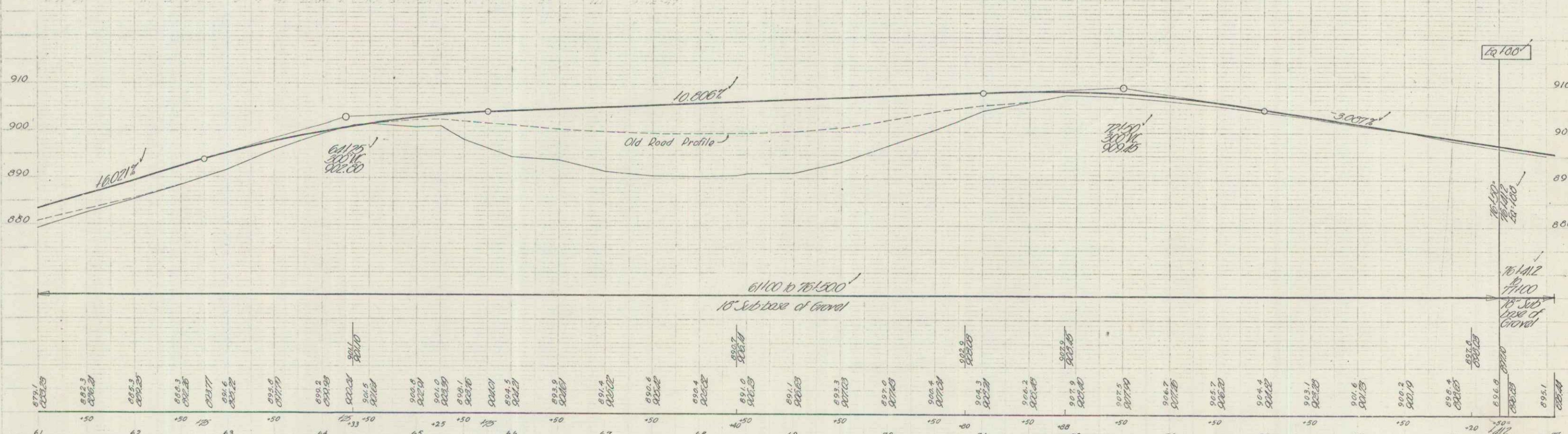


BM # 24 Spike in root of 14' Elm 39' Rt. Sta. 38+15 Elev. 782.72

HY-DE PARK (2011)
 SHEET 6 OF 13

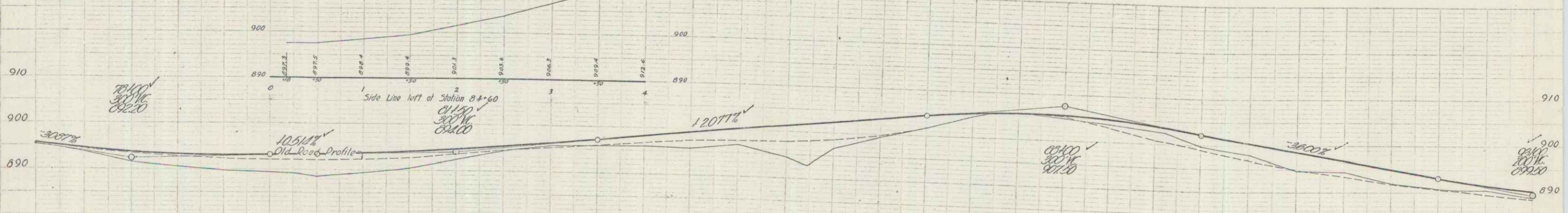
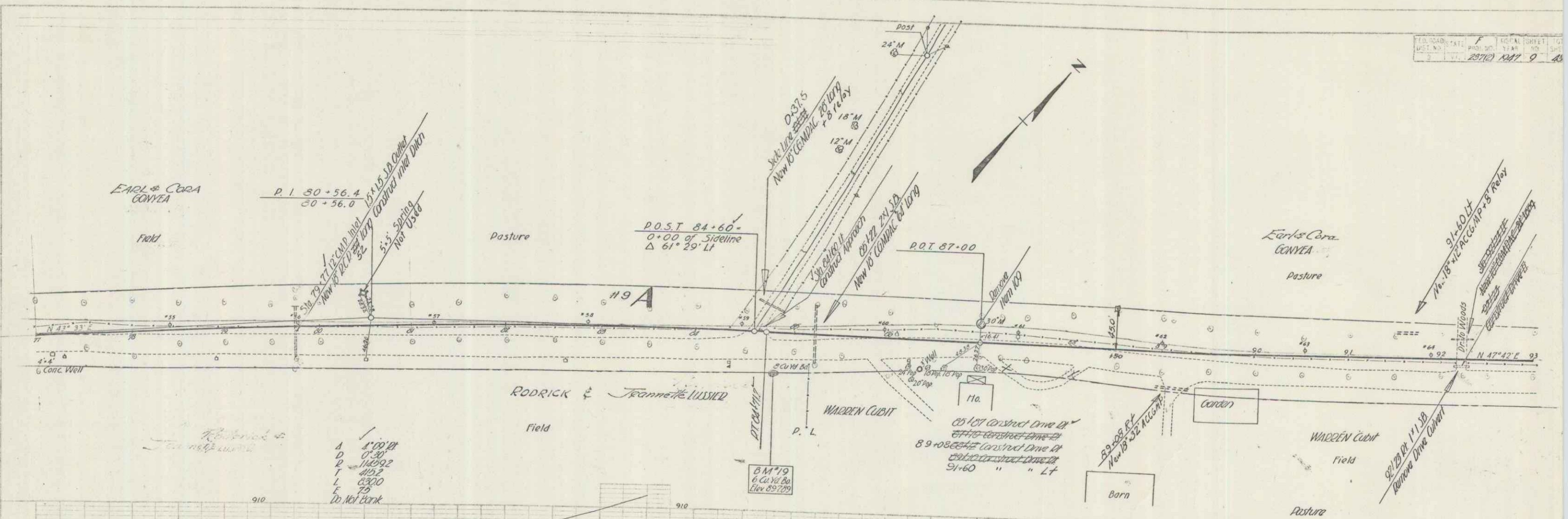


PARCEL INSTRUMENT DATE	GRANTOR	GRANTEE	RECORDED HYDE PARK BOOK PAGE DATE	REMARKS
# 8 A	W. D. O. E.	9-29-47	RODERICK & TRAMMIE LUSSIER ST. W. K.	33 116 9-12-47
# 9 A	W. D. O. E.	9-4-47	EARL & CORA GONYEA	33 111 9-12-47



8 M * 20 Spike in root of 16" Maple 33' Lt. Sta. 72+22 Elev. 910.04
 8 M * 21 Spike in root of 24" Elm 72' Rt. Sta. 64+16 Elev. 895.60

9-15
 9-15
 9-15

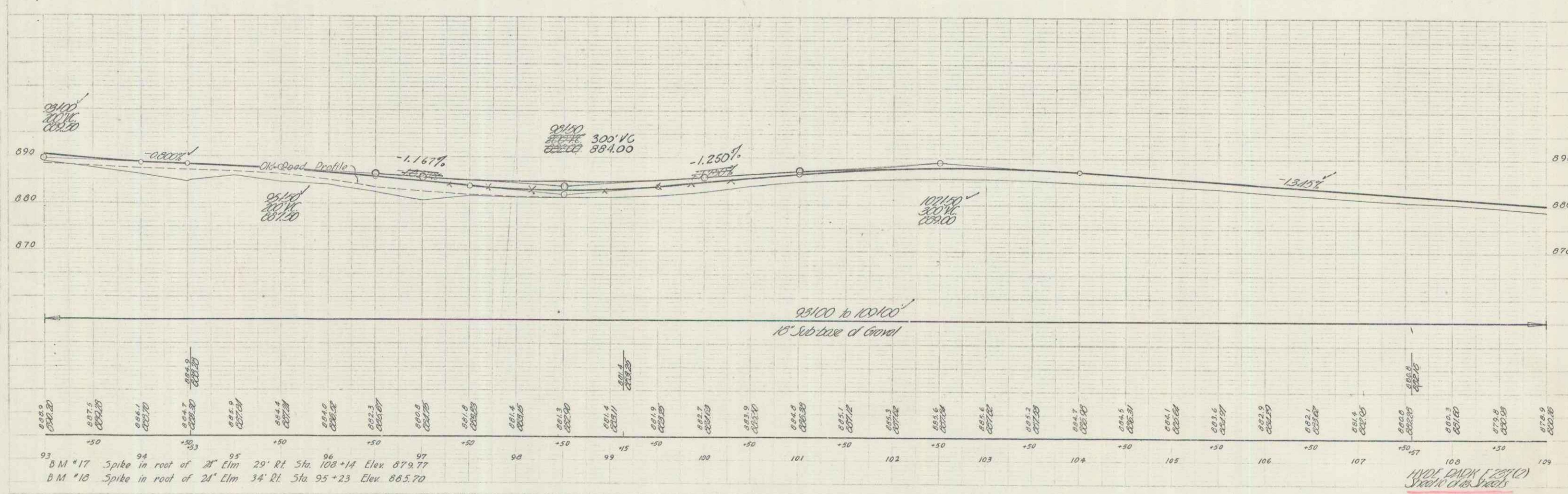
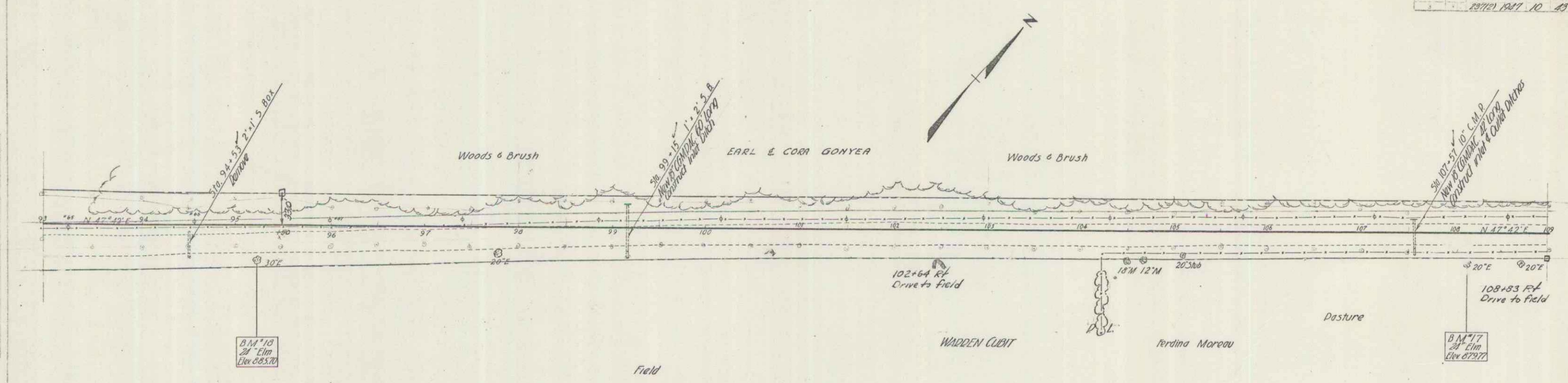


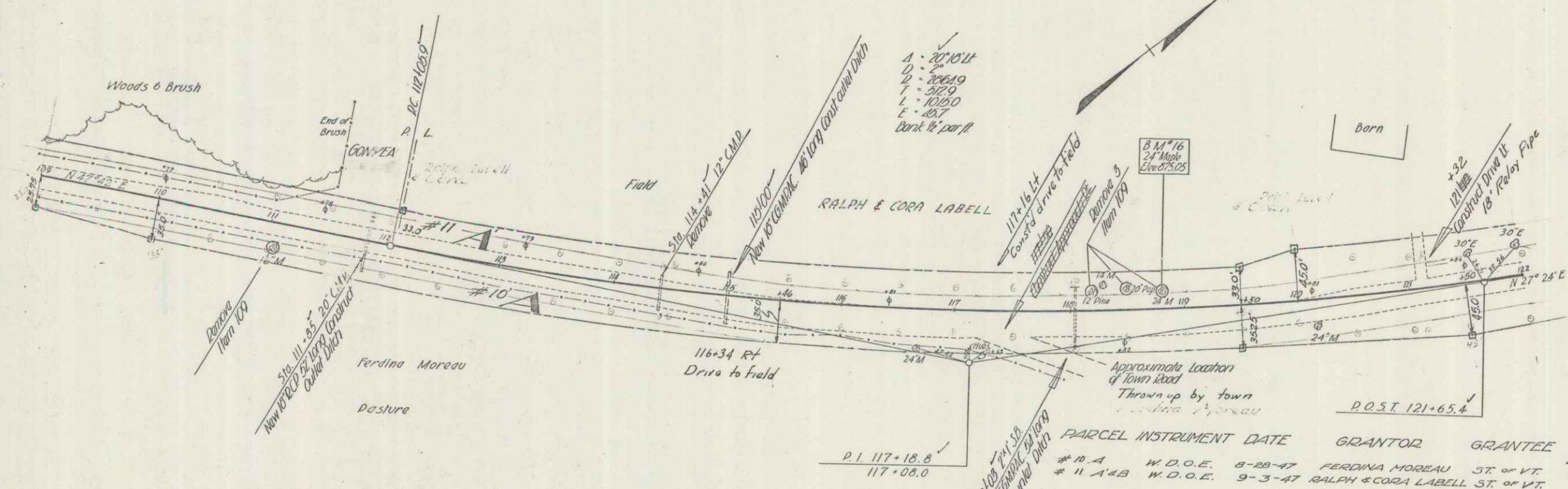
7100 to 22100
 15' Subbase of Gravel

77	78	79	80	81	82	83	84	85	86	87	88	89	90	91	92	93
897.89	898.10	898.30	898.50	898.70	898.90	899.10	899.30	899.50	899.70	899.90	900.10	900.30	900.50	900.70	900.90	901.10

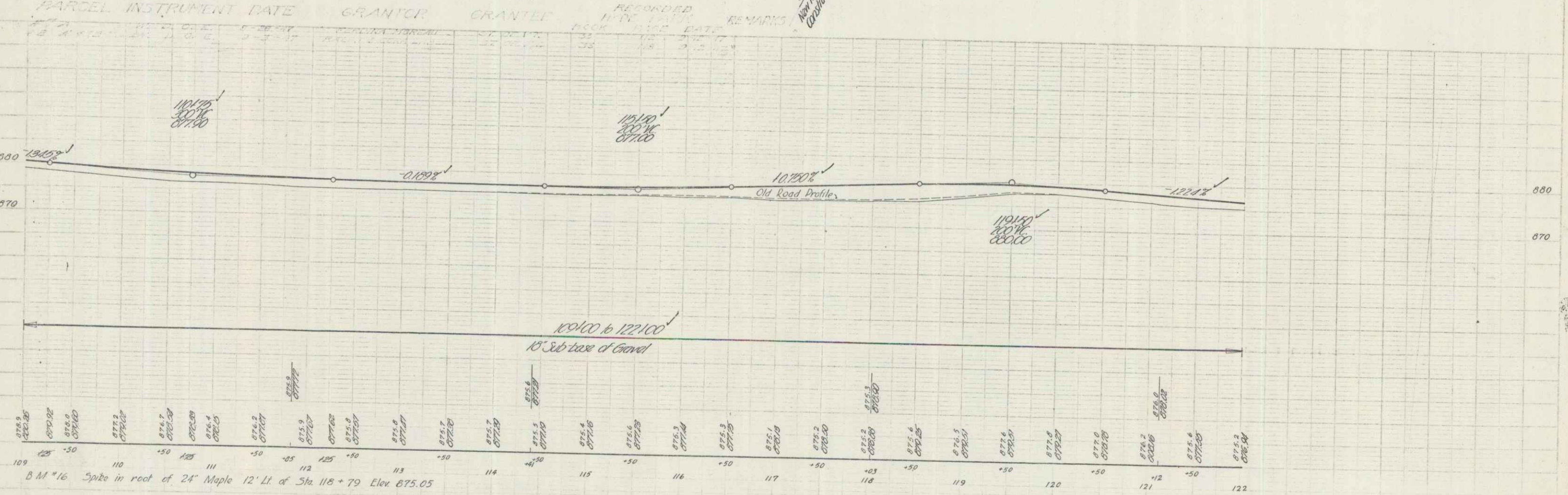
B.M. 19 Spot on 6 Cu. Yd. Boulder 42' Rt. Sta. 84.79 Elev. 897.89

11/20/17
 9-15

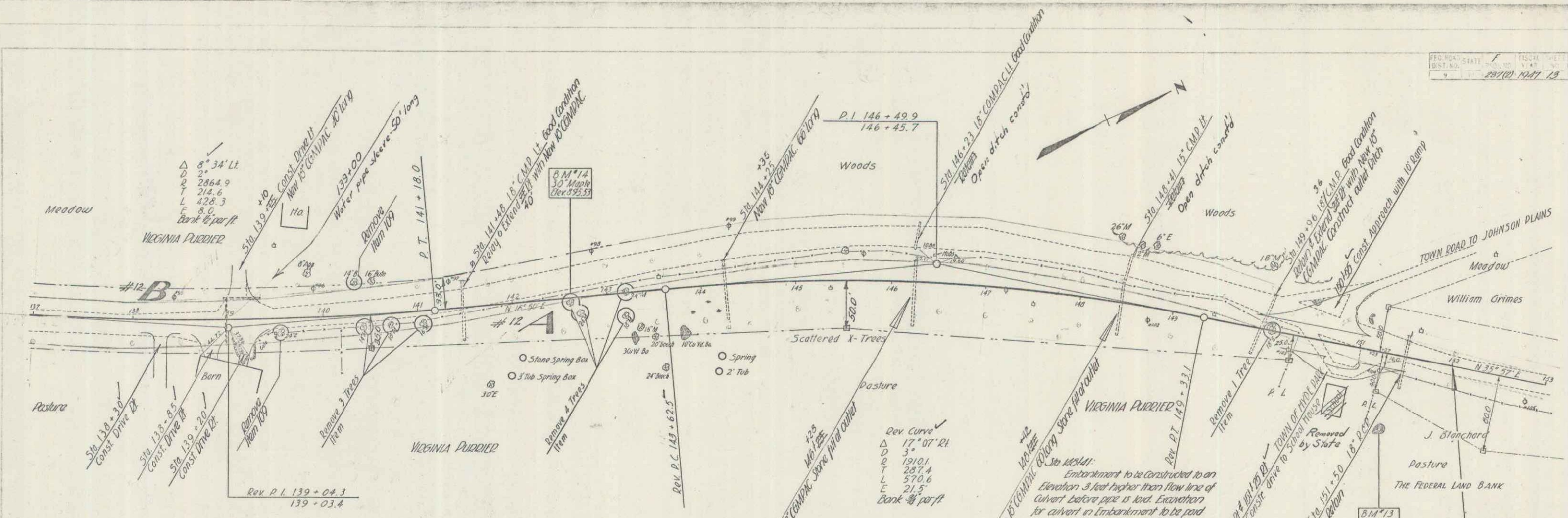




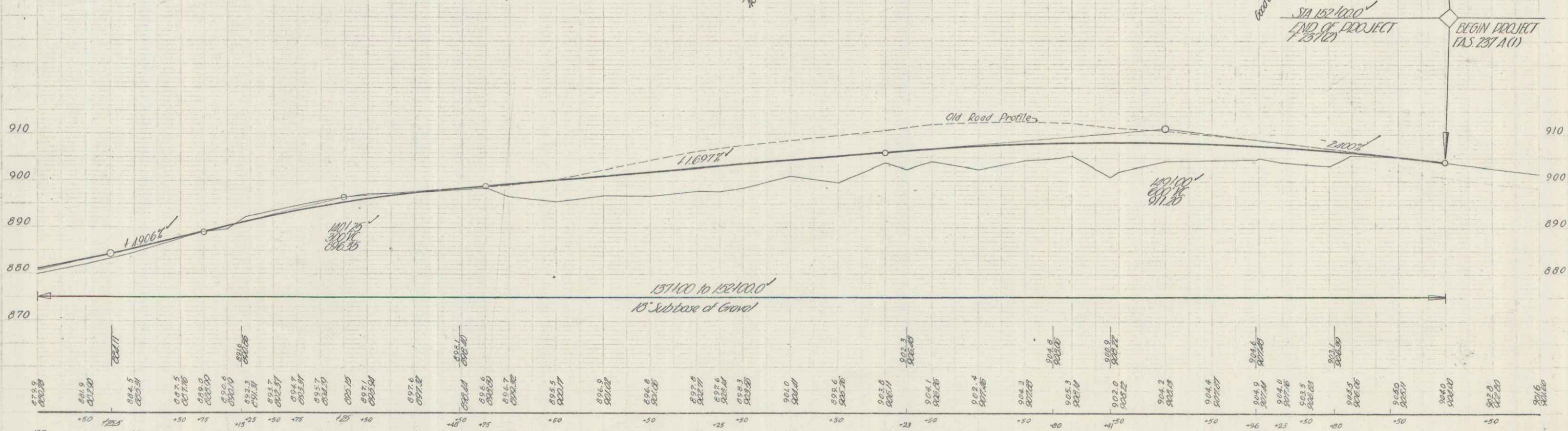
PARCEL INSTRUMENT DATE	GRANTOR	GRANTEE	RECORDED BOOK	HYDE PARK PAGE	DATE	REMARKS
# 10 A	W.D.O.E.	8-28-47	FERDINA MOREAU	ST. OF VT.	33	112 9-18-47
# 11 A & B	W.D.O.E.	9-3-47	RALPH & CORA LABELL	ST. OF VT.	33	118 9-12-47 B - SEE SHEET 12



HYDE PARK T-23712
 Sheet 11 of 12



PARCEL #	INSTRUMENT	DATE	GRANTOR	GRANTEE	RECORDED HYDE PARK REMARKS
#12	139-03.4	7-30-97	VIRGINIA PURDIER	ST. OF VT.	331 103 3-2-97



B.M. *13 Spot on Boulder 100' Rt Sta. 151+36 Elev 899.33
 B.M. *14 Spike in root of 30" Maple 4.5 Lt. Sta. 142+66 Elev 895.53

HYDE PARK (25712)
 Street to Clear Woods