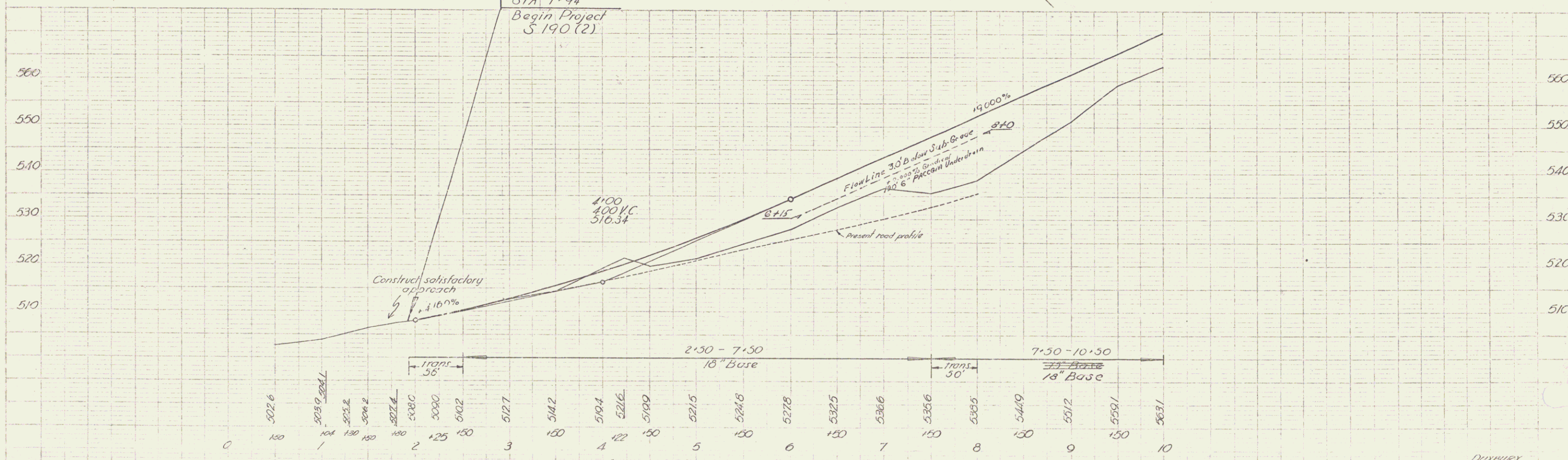
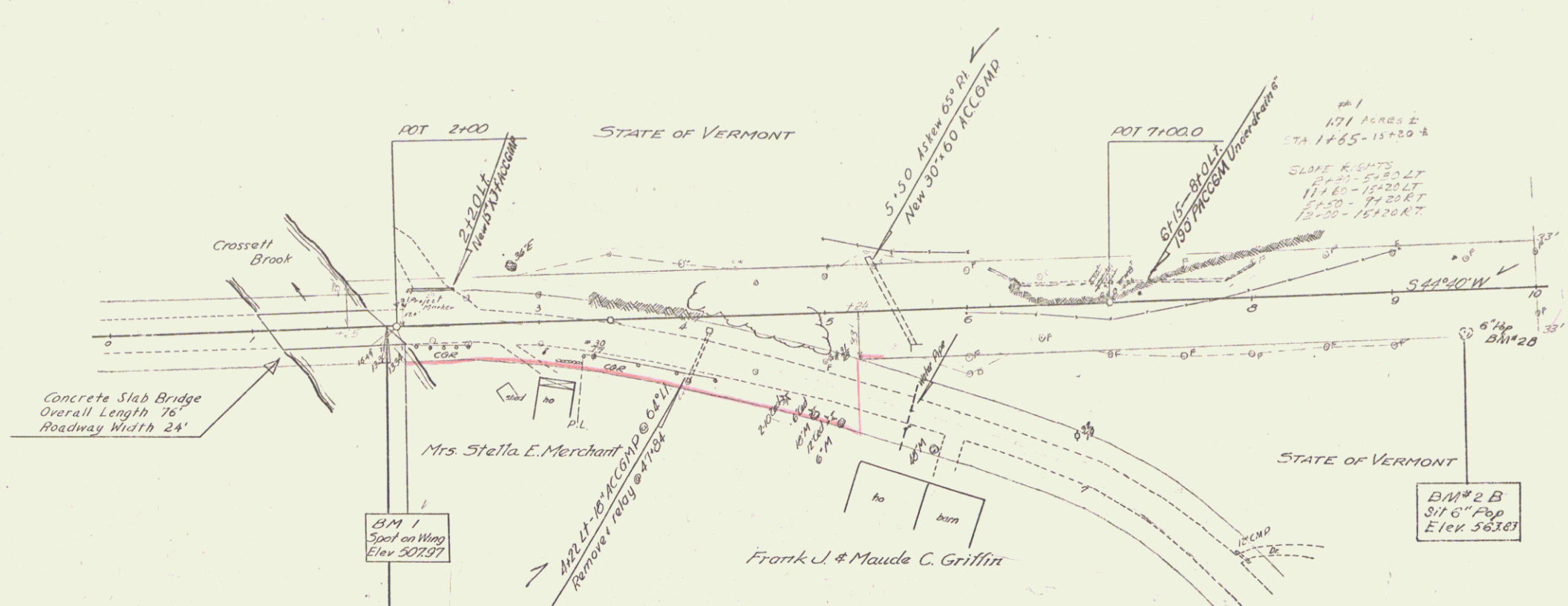


11 WOOD GUIDE POSTS RI V 5'30'  
 24' TWO CABLE GUARD RAIL RI 2100-2124 2102-2134 32  
 CONSTRUCT DRIVE 2120 LT  
 CONSTRUCT APPROACH 5'00 Rt



BM #1 Spot on bridge wing 14 ft. Rt. Sta. 2106 Elev. 507+94 V BM #2 B Sit 6" Pop 29' Rt. 9+50 Elev. 563.83

DENNIS  
 Proj 316 (100%)  
 Sheet 13 of 51