

INDEX OF SHEETS

SHEET NO.	TITLE PAGE
1	TITLE PAGE
2	TYPICAL CROSS SECTION OF IMPROVEMENT (SINGLE TACK COAT OF REFINED TAR AND BLADE MIX)
3	QUANTITY SHEET (MIX PEA STONE SEAL WITH CUTBACK ASPHALT) ITEM 317
4	ITEM DETAIL AND DRAINAGE SHEET
5-7	EARTHWORK SHEETS
8	DETAILS OF 8'-7" x 5'-11" CGMPPA
9	RS-56-1 (BANKING TABLES)
10	RS-56-2 (MARKERS)
11	RS-56-4 (DRAINAGE)
12	RS-56-10 (TWO CABLE GUARD RAIL)
13	RS-56-12 (SIGNS AND LIGHTS)
14-21	PLAN AND PROFILE SHEETS
22-53	CROSS SECTIONS

STATE OF VERMONT  
DEPARTMENT OF HIGHWAYS

PROPOSED IMPROVEMENT

FEDERAL AID SECONDARY

TOWN OF DUXBURY

COUNTY OF WASHINGTON

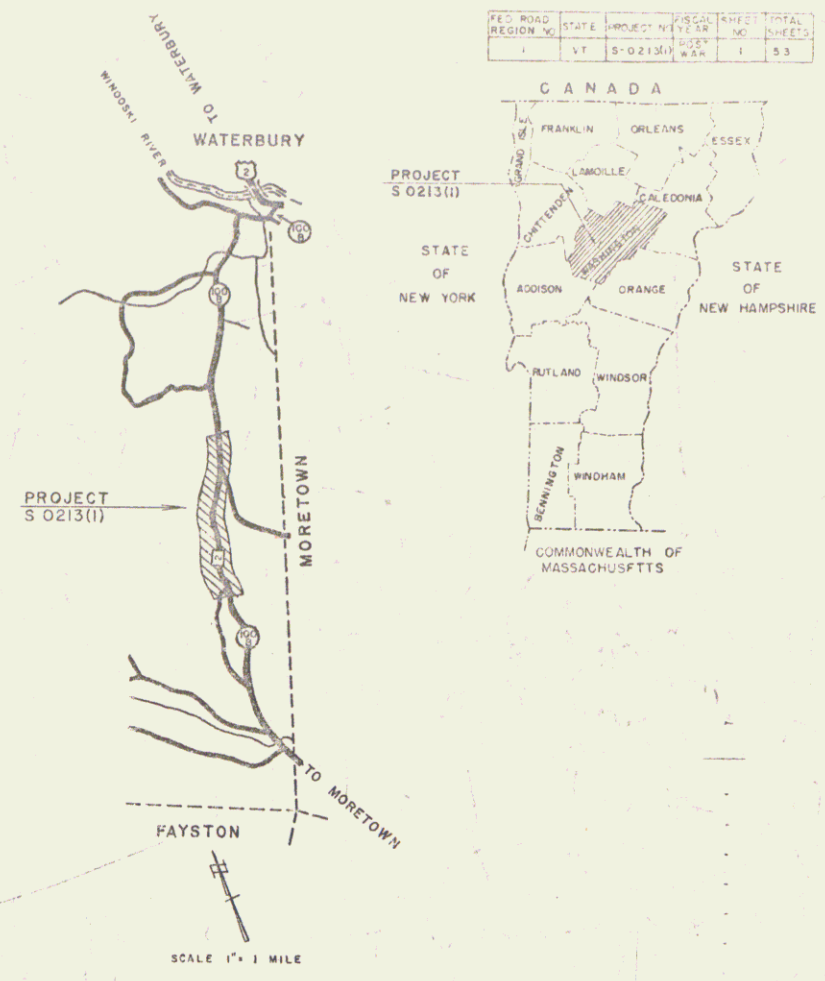
VERMONT ROUTE #100

(STATE AID ROUTE #2)

WATERBURY-MORETOWN ROAD

BEGINNING AT A POINT APPROXIMATELY 4.30 MILES NORTH OF THE INTERSECTION OF VERMONT ROUTE 100B AND VERMONT ROUTE 100 AND EXTENDING SOUTHERLY 9565.5 FEET.  
LENGTH OF PROJECT 9565.5 FEET = 1.812 MILES.

PROJECT NAME & NUMBER	TYPE	PAVEMENT AREA
DUXBURY S-0213(1)	SIN. TACK REFD TAR & BLADE MIX WITH PEA STONE SEAL WITH CUTBACK ASPH. 3210	21581 Sq. Yds.
RECORD PLANS MATERIALS		
SUBBASE OF GRAVEL	ROBIE PIT. MORETOWN, VT.	ACCGMP N.E. METAL CULV. CO. BOSTON, MASS.
REFINED TAR	KOPPERS COMPANY INC.	R.C.P. VT. CONCRETE PIPE CORP. WINDSOR, VT.
CUTBACK ASPHALT	KOPPERS COMPANY INC.	PEASTONE VT. PAVING CO. RICHMOND, VT.
SAND SEAL	VT. PAVING CO. RICHMOND, VT.	GUARD RAIL CABLE BETHLEHEM STEEL CORP.
CONTRACTOR	ROGERS BROTHERS	CONTRACT DATED OCTOBER 16, 1958.
RESIDENT ENGINEER	EARLE F. LANE	CONTRACT STARTED OCTOBER 29, 1958.
INSPECTORS		CONTRACT COMPLETED AUGUST 26, 1959
RECORD PLANS	EARLE F. LANE	CONTRACT ACCEPTED AUGUST 26, 1959



(To Be Returned to R.O.W. Division)  
Town of Duxbury  
Highway Department  
Town File

	1958	1975
ADT	345	465
DHV		95
V	40	
D	65	
T	10	



CO  
COUNTY LINE  
TOWN LINE  
STONE WALL  
UNFINISHED  
GUARD RAIL  
TRAVELED  
RAILROAD  
RETAINING  
CENTER LINE  
SURVEY LINE  
GULLY  
DROP WALL  
TROLLEY  
POWER LINE  
TELEPHONE  
TREES  
WOODS

DUXBURY  
S-0213(1)  
SIN. TACK REFD TAR & BLADE MIX WITH PEA STONE SEAL  
WITH CUTBACK ASPHALT 3210  
CONTRACTOR ROGERS BROTHERS  
AUGUST 26, 1959  
Beginning at a point approximately 4.30 miles North of the intersection of Vermont Route 100B and Vermont Route 100 and extending Southerly 9565.5 ft.

DUXBURY S-0213(1)  
CONTRACTOR - ROGERS BROTHERS  
RECORD PLANS - EARLE F. LANE  
CONSTRUCTION COMPLETED - AUGUST 26, 1959

	DATE	LINE
GROUND ELEVATION		
GRADE ELEVATION		

SCALES

TITLE	1" = 400'
TYPICAL	1" = 20'
PLAN	1" = 50'
PROFILE	HORIZONTAL 1" = 50'
	VERTICAL 1" = 10'
CROSS-SECTIONS	1" = 5'

THESE PLANS ARE SUBJECT TO SUCH REVISIONS AS MAY BE REQUIRED BY THE BUREAU OF PUBLIC ROADS OR THE COMMISSIONER OF HIGHWAYS.  
CONSTRUCTION IS TO BE CARRIED ON IN ACCORDANCE WITH THE PLANS AND THE STANDARD SPECIFICATIONS FOR HIGHWAY AND BRIDGE CONSTRUCTION OF JANUARY 1956 SUBMITTED TO THE BUREAU OF PUBLIC ROADS AS APPROVED JULY 5, 1956, INCLUDING ALL SUBSEQUENT APPROVED REVISIONS AND SUCH REVISED SPECIFICATIONS AND SPECIAL PROVISIONS AS ARE SUBMITTED WITH THE PLANS.

DATE: 09/19/1958  
PIN: 00R629

APPROVED SECONDARY ENGINEER DATE 9/21/1958	APPROVED SUPERVISOR DATE 9/17/1958	APPROVED SUPERVISOR DATE 9/19/1958	APPROVED PROJECT ENGINEER DATE 9/19/1958	APPROVED DESIGN ENGINEER DATE 9/19/1958	APPROVED CHECK ENGINEER DATE 9/23/1958
--	--	--	--	---	--

DEPARTMENT OF COMMERCE  
BUREAU OF PUBLIC ROADS

APPROVED

DIVISION ENGINEER

PROJECT S-0213(1)

SHEET 1 OF 53 SHEETS



Wood Guide Posts  
 RT  
 126+25-122+40  
 LT  
 126+15

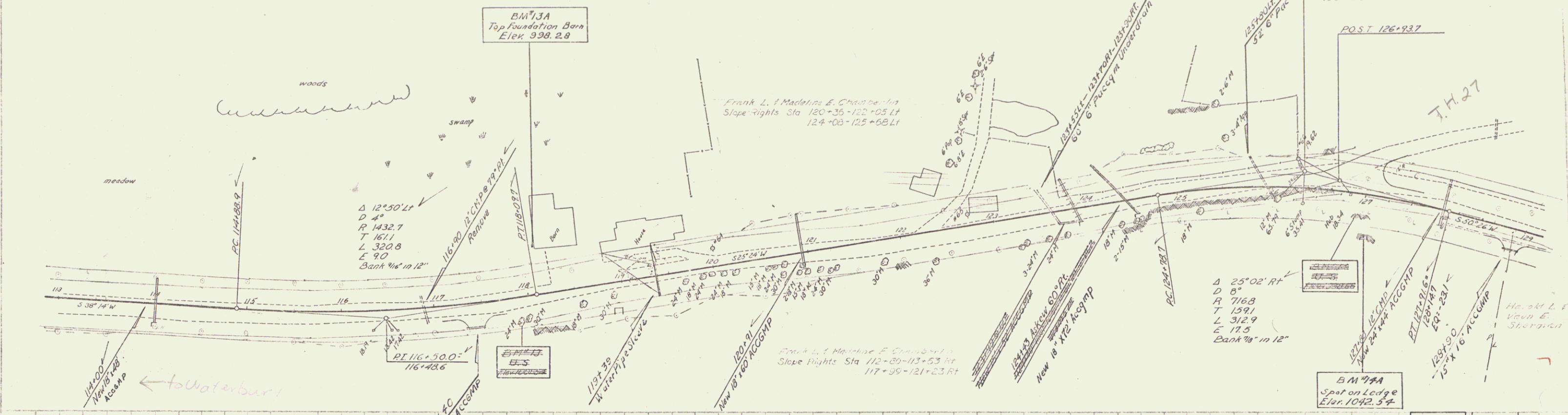
Two Cable Guard Rail  
 RT  
 126+20-128+10

Drilling & Blasting of  
 Solid Rock Subgrade  
 126+00-127+50  
 128+15-129+38

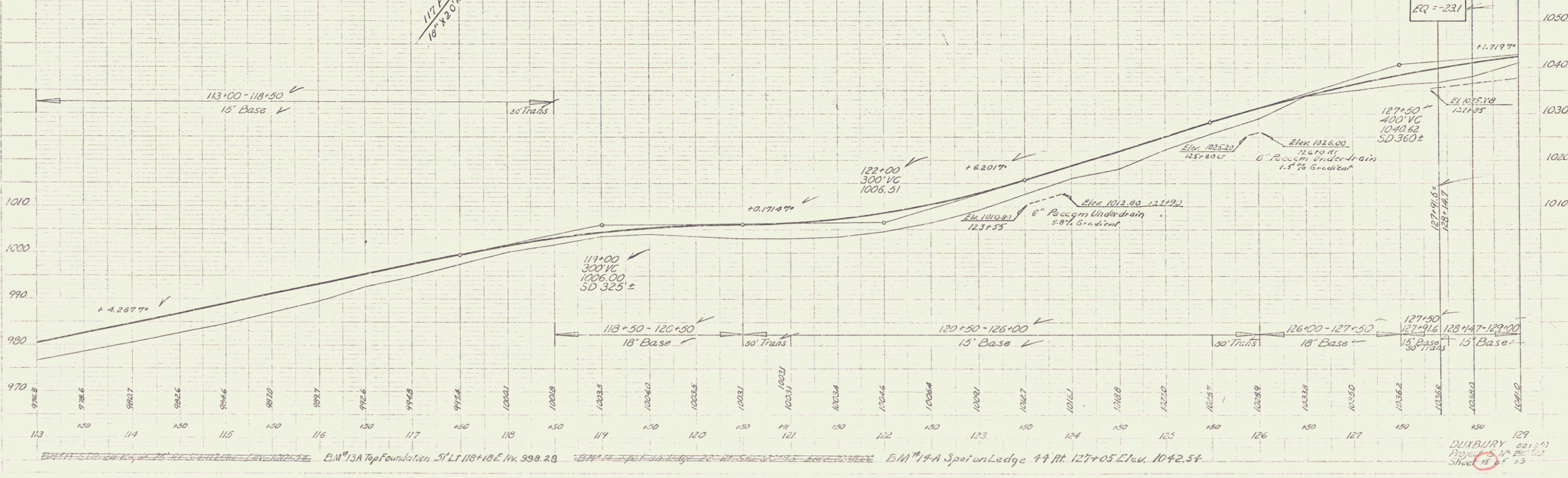
Construct Drives  
 RT  
 113+88  
 117+75  
 118+75  
 118+90  
 118+93  
 122+62

Construct Approach  
 RT  
 126+50

Jewett  
Burns



Jewett  
Burns



BM 73A Top Foundation 51' LT 118+18 E. 998.28    BM 74A Spot on Ledge 44 RT 127+05 Elev. 1042.54    DUNBURY 241.50  
 Project No. 15-153    Sheet 15 of 33

Wood Guide Posts  
LI  
5 135+88 - 135+50

Two Cable Guard Rail  
LI RI  
139+75 - 145+75  
135+75 - 139+75  
136+98 - 138+94  
130+22 - 142+52  
143+05 - 145+00

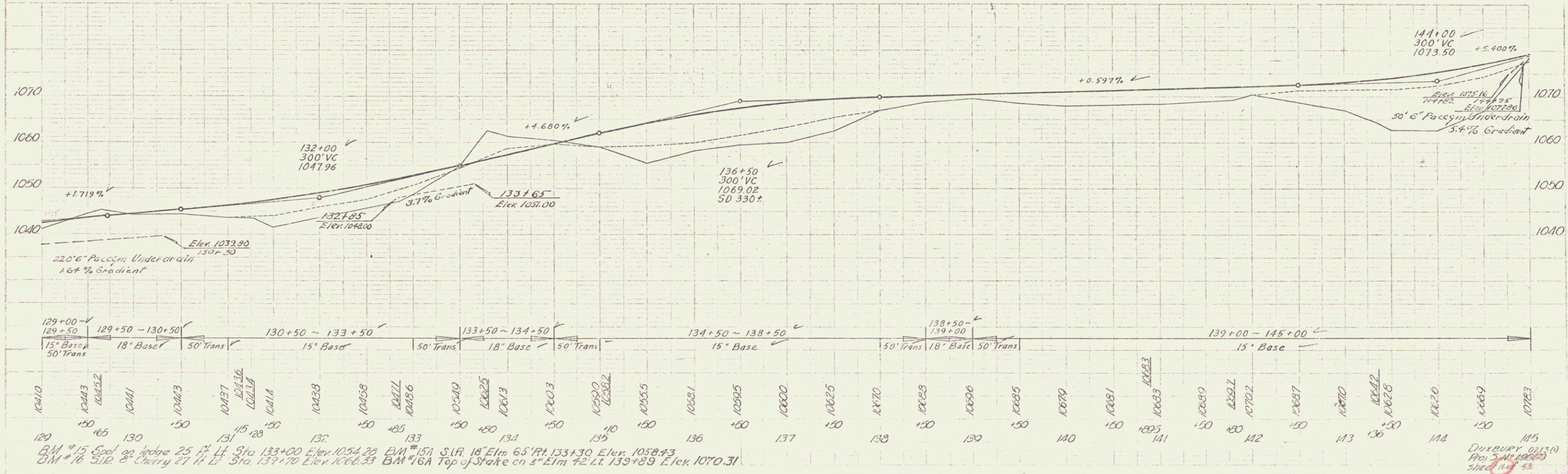
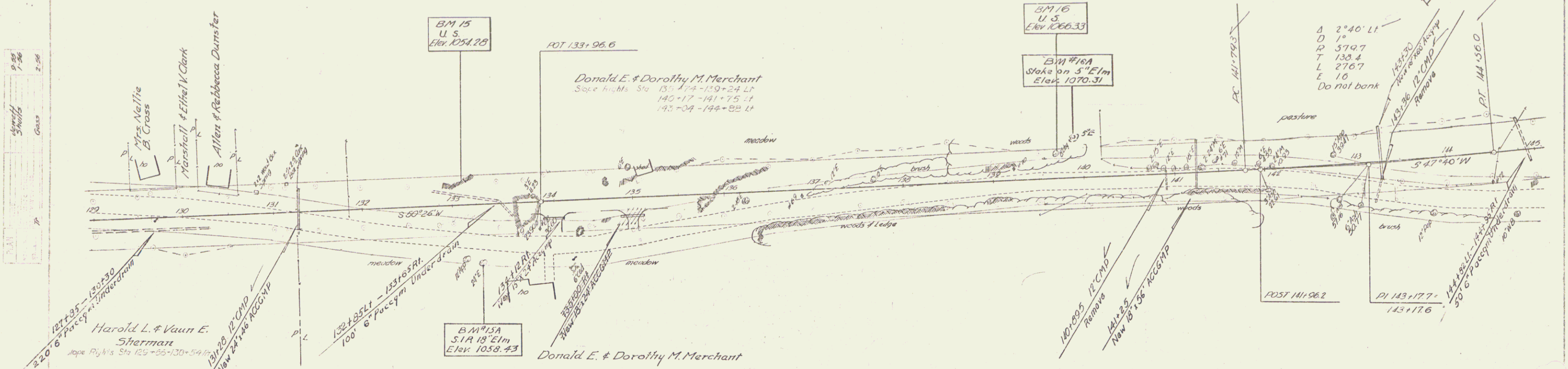
Drilling & Blasting of  
Solid Rock Subgrade  
LI RI  
138+30 - 139+30  
133+50 - 135+00

Construct Drives  
LI RI  
129+64 - 130+75  
136+65 134+12  
142+75

Plank Guard Rail  
RI  
16' 143+14  
16' 143+12

Scale  
9.50  
1.50  
0.50  
0.25

Scale  
9.50  
2.50



BM #15 Spot on ledge 25 ft. LI Sta 133+00 Elev. 1054.28  
 BM #16 Top of Stake on 5" Elm 72 ft. LI Sta 133+89 Elev. 1070.31  
 BM #15A S.I.R. 18' Elm 65' RI Sta 133+30 Elev. 1058.43  
 Duxbury 0215(1)  
 Proj. 7410 08/20/03  
 Sheet 11 of 43





Wood Guide Posts  
 Lt. 176+20-177+80

Two Cable Guard Rail  
 Rt. 172+00-175+95

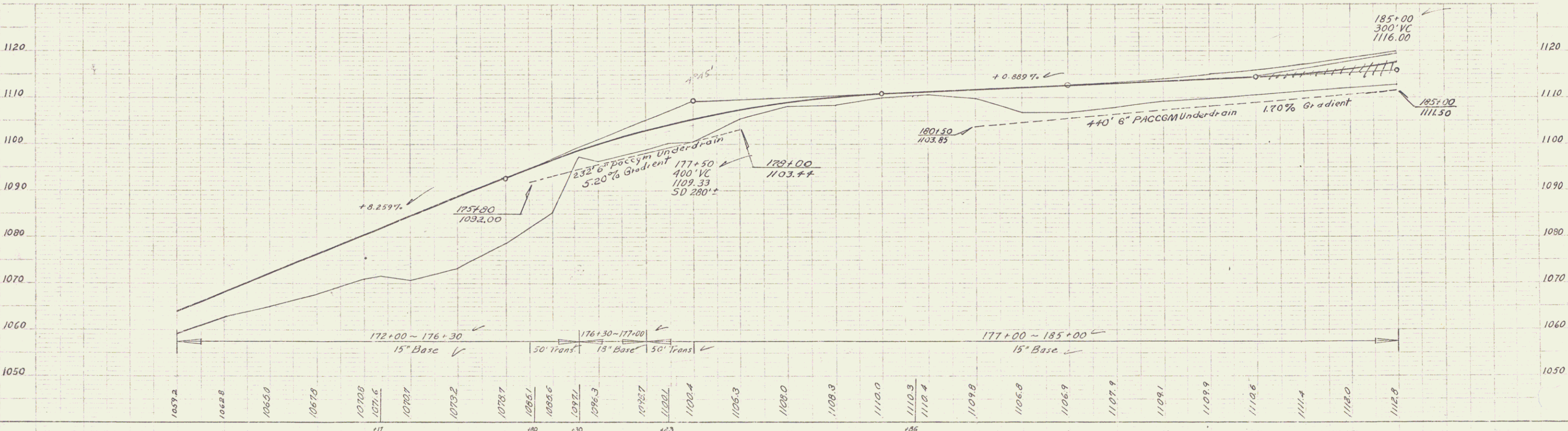
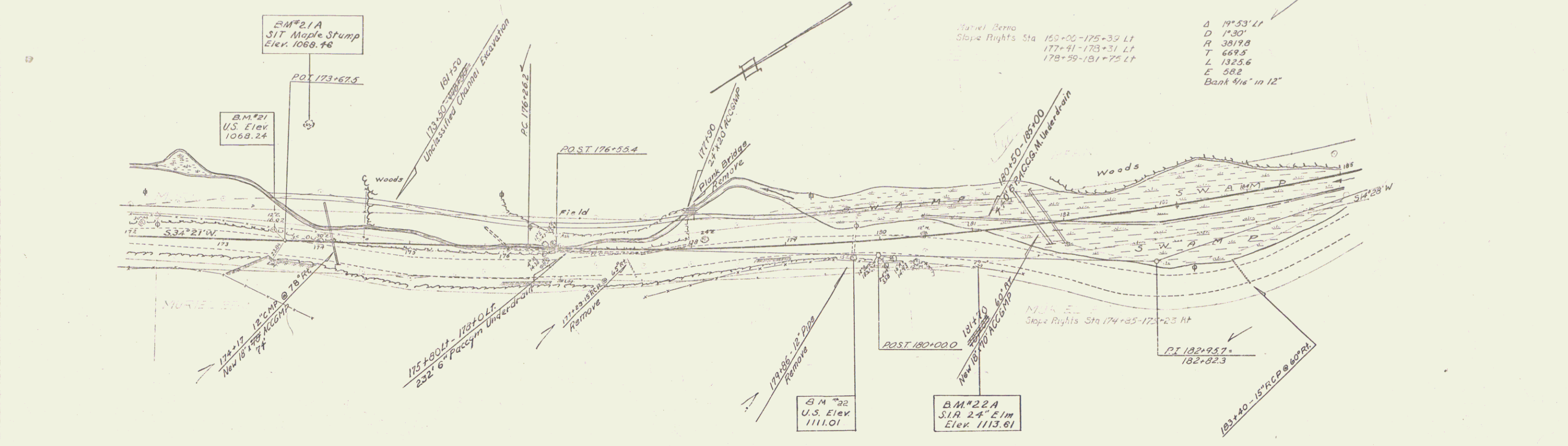
Drilling & Blasting of  
 Solid Rock Subgrade  
 Lt. 176+50-176+94

Construct Drives  
 Lt. 177+90 181+25

Market Bena  
 Slope Rights Sta 150+00-175+39 Lt  
 177+41-178+31 Lt  
 178+99-181+75 Lt

Δ 19°53' Lt  
 D 1'30"  
 R 3819.8  
 T 669.5  
 L 1325.6  
 E 58.2  
 Bank 4/16" in 12"

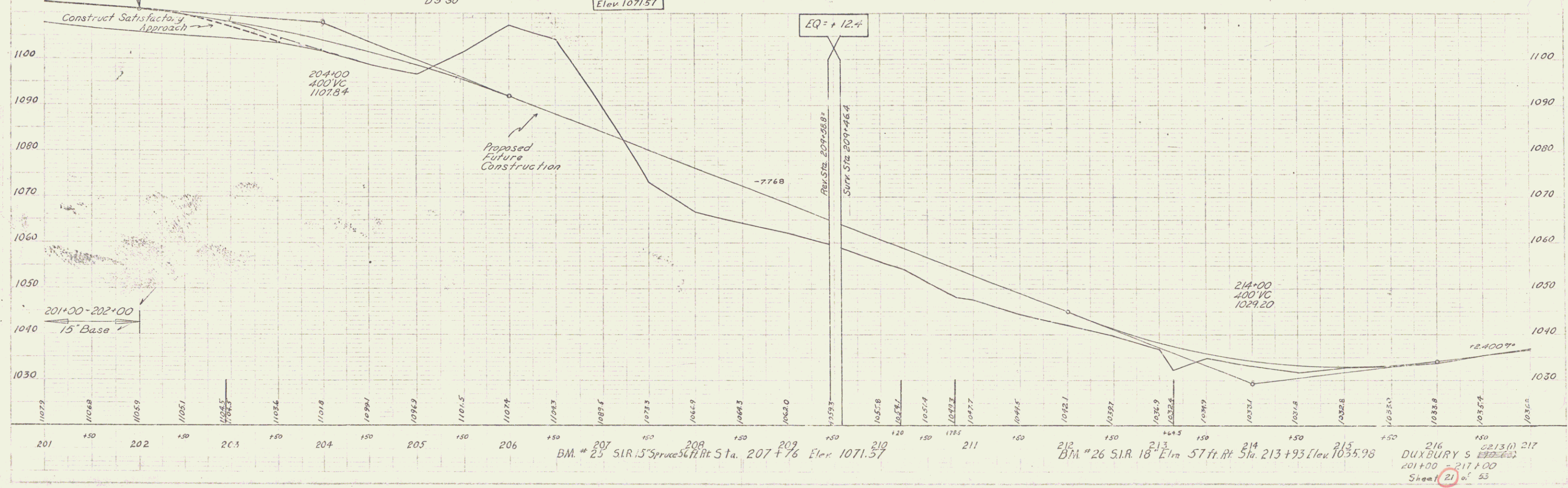
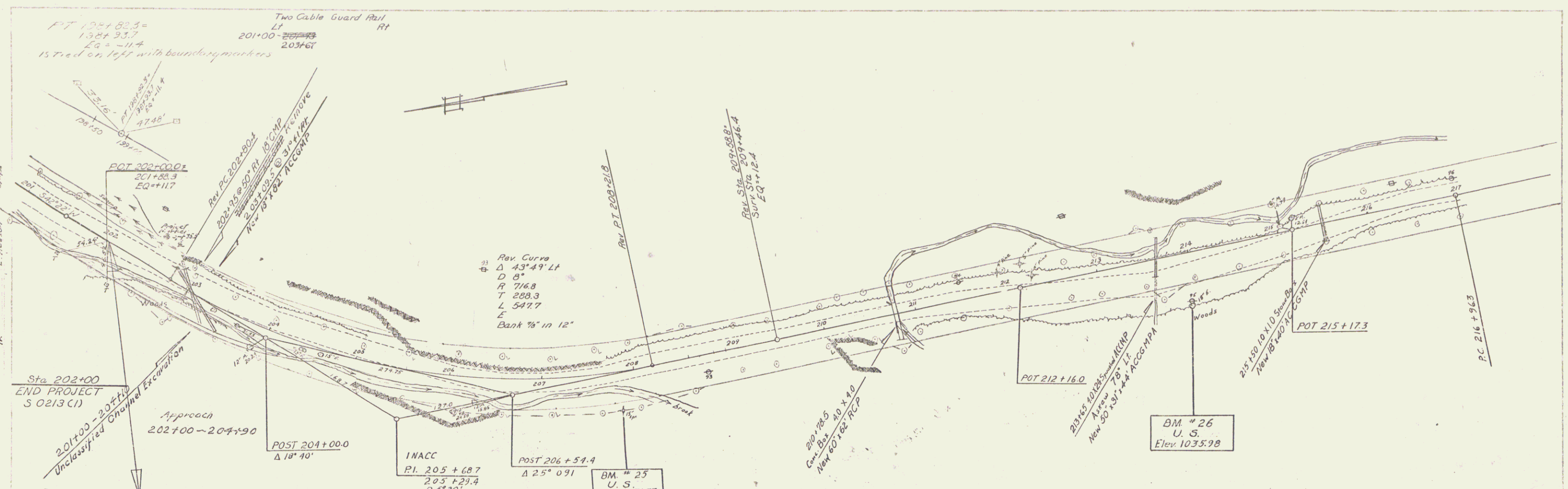
Delano A. Gagnan  
 01/27  
 Mar 58



B.M.#21 - S.I.T. 12" Elm 13" Lt. Sta. 173+55 Elev. 1068.24 B.M.#21A S.I.T. Maple Stump 125' Lt. 173+90 Elev. 1068.46 B.M.#22A S.I.R. 24" Elm 36" Rt. 181+03 Elev. 1113.61

DUXBURY 0213(1)  
 Project No. 5-1200  
 Sheet 19 of 23





Professor  
 A. G. Wynn  
 S. H. Hildner  
 Tr.

Professor  
 F. Hildner

BM # 25 S.I.R. 15' Spruce St. Rt. Sta. 207+76 Elev. 1071.57  
 BM # 26 S.I.R. 18' Elm St. Rt. Sta. 213+93 Elev. 1035.98  
 DUXBURY S 0213 (1) 217  
 201+00 - 217+00  
 Sheet 21 of 55