

PLAT NO.	DATE	GRANTOR	GRANTEE	RECORDED	REMARKS
10A	9-2-38	BESSIE L. EMERY SOMERVILLE	WATTSFIELD	17	
	5-12-39	MELVIN LIVINGSTON	WATTSFIELD	17	
	4-20-38	M. LLOYD MAXWELL	WATTSFIELD	17	
	10-31-44	MELVIN C. LIVINGSTON	WATTSFIELD	17	

Construct Drives
 Station Position
 519+50 Lt
 520+80 Lt
 523+00 Rt

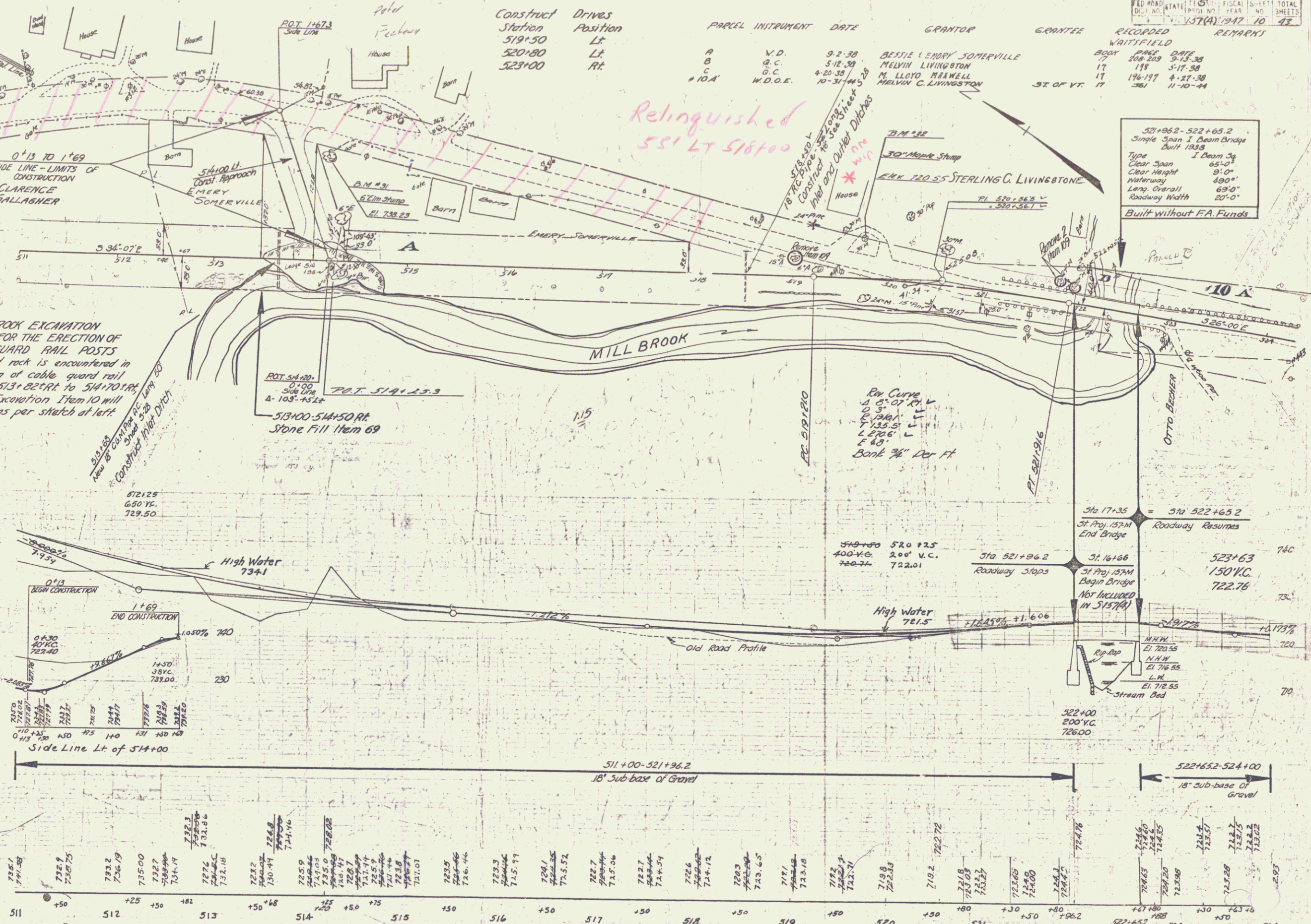
Relinquished
 551 Lt 518+00

521+86.2 - 522+65.2
 Simple Span I Beam Bridge
 Built 1938
 Type I Beam Sp
 Clear Span 65'-1"
 Clear Height 8'-0"
 Waterway 48'-0"
 Long Overall 69'-0"
 Roadway Width 20'-0"
 Built without FA Funds

SCLOPES TO BE MULCHED Item III
 Station to Station Position
 511+00 - 512+00 Rt & Lt
 522+75 - 524+00 Lt
 523+00 - 524+00 Rt

Limits of Solid Rock Excavation Item 10

SOLID ROCK EXCAVATION ITEM 10, FOR THE ERECTION OF CABLE GUARD RAIL POSTS
 If solid rock is encountered in the erection of cable guard rail posts Sta 513+02.4 RT to 514+70.4 RT Solid Rock Excavation Item 10 will be allowed as per sketch at left



Station	Elevation	Station	Elevation	Station	Elevation	Station	Elevation	Station	Elevation
511	726.7	512	725.9	513	725.0	514	724.1	515	723.2
516	722.3	517	721.4	518	720.5	519	719.6	520	718.7
521	714.8	522	713.9	523	713.0	524	712.1		

D.M. 31 SPIKE IN Elm Stump 36' LT STA 514+29 ELEV 730.23
 D.M. 32 " " Elm Stump 49' LT STA 519+71 ELEV 720.55

Series S 157 (A)
 Sheet 10 of 43 Sheets