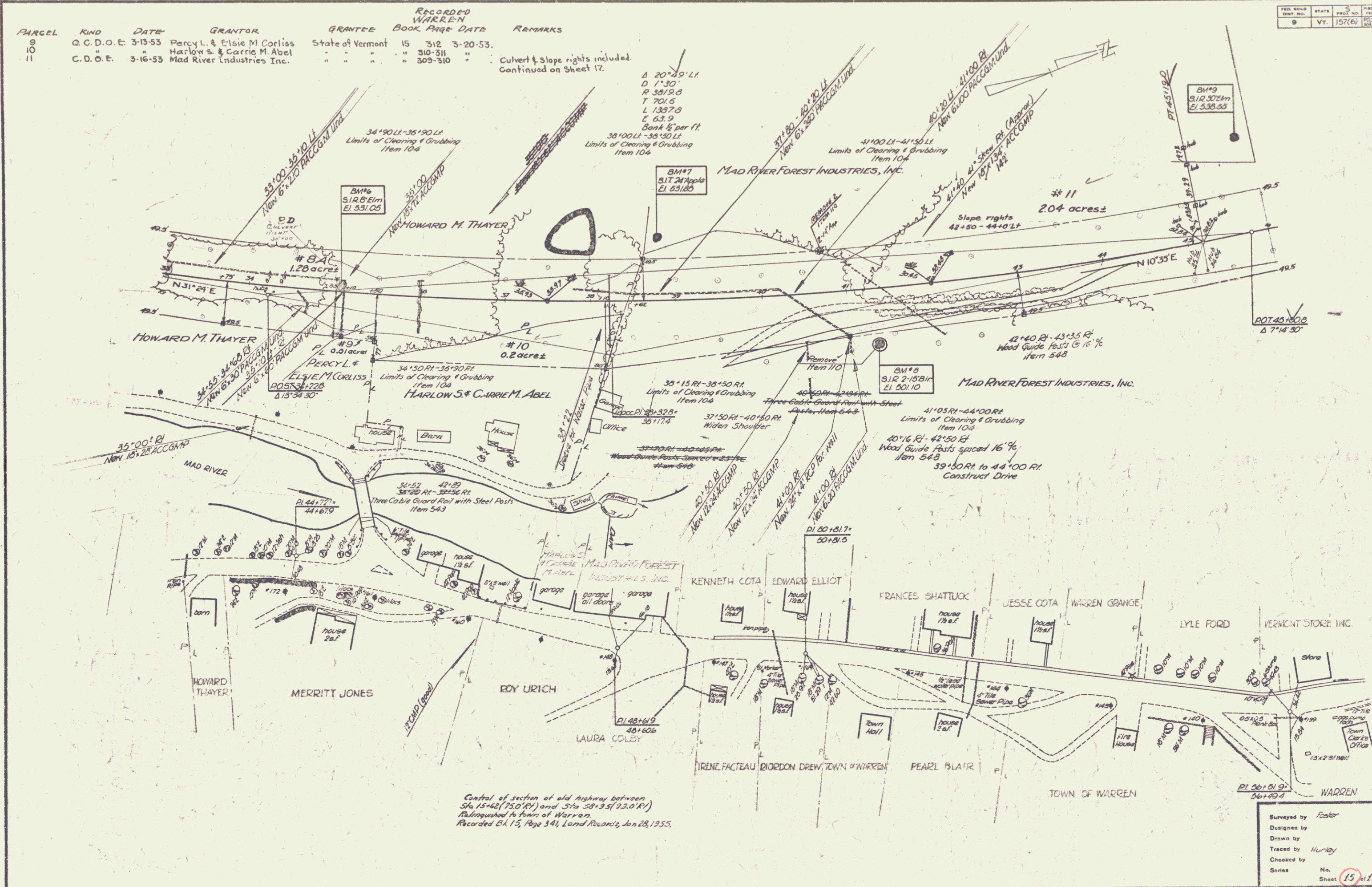


PARCEL	KIND	DATE	GRANTOR	GRANTEE	BOOK	PAGE	DATE	REMARKS
9	O.C.D.O.E.	3-13-53	Percy L. & Elsie M. Corliss	State of Vermont	15	312	3-20-53.	
10	"	"	Harlow S. & Carrie M. Abel	"	"	310-311	"	
11	C.D.O.E.	3-16-53	Mad River Industries Inc.	"	"	309-310	"	Culvert & Slope rights included. Continued on Sheet 17.

FED. ROAD DIST. NO.	STATE	PROJECT NO.	SERIAL	SHEET NO.	TOTAL SHEETS
9	Vt.	157(6)	15	15	15



Control of section of old highway between Sta 15+42 (150' R) and Sta 38+55 (93.0' R) Relinquished to Town of Warren. Recorded B.A. 15, Page 341, Land Records, Jan 28, 1955.

Surveyed by Foster
 Designed by
 Drawn by
 Traced by Hurley
 Checked by
 Series No. 15 of 135
 Filed