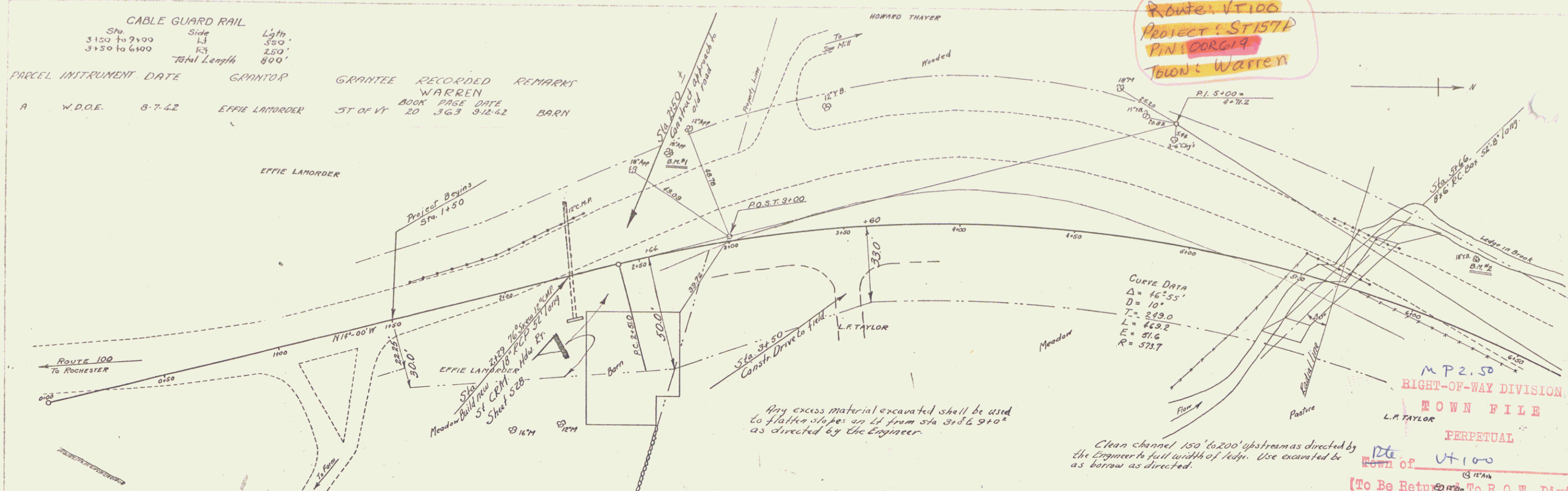


Warren Dam Jobs

PARCEL INSTRUMENT DATE	GRANTOR	GRANTEE	RECORDED	REMARKS
A W.D.O.E. 8-7-42	EFFIE LAMORDER	WARREN	20 363 912-42	BARN



Route VT 100
Project ST 157A
PIN COOR 19
Town Warren

MP 2.50
RIGHT-OF-WAY DIVISION
TOWN FILE
L.R. TAYLOR
PERPETUAL

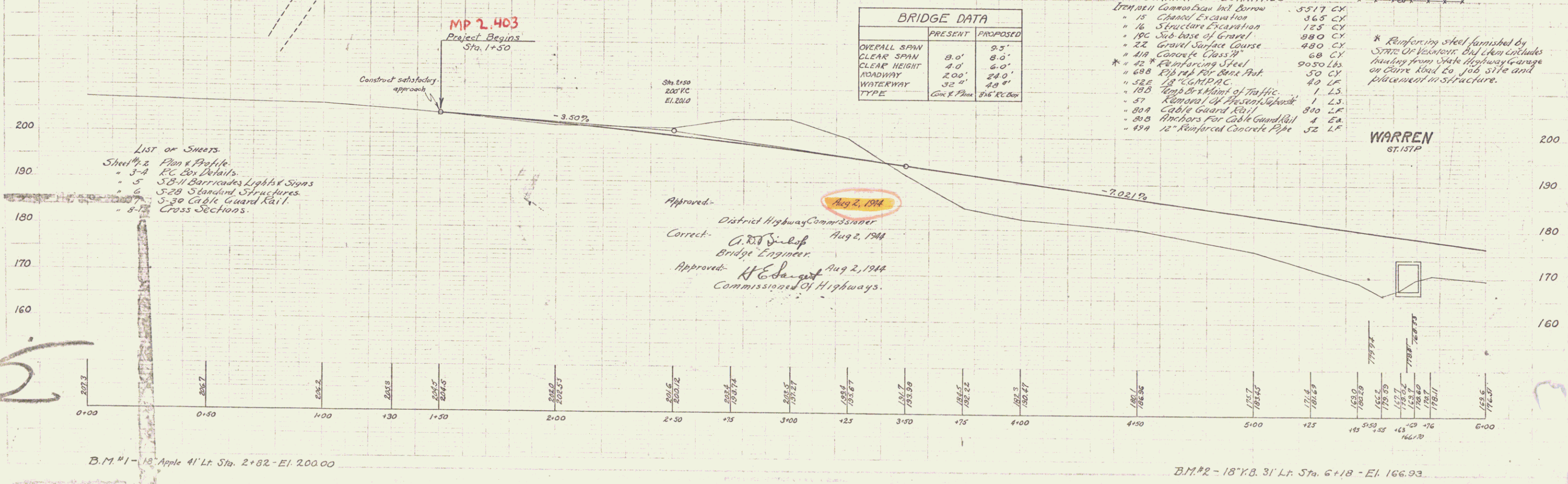
Clean channel 150' to 200' upstream as directed by the Engineer to full width of bed. Use excavated as borrow as directed.

(To Be Returned To R.O.W. Division)

	PRESENT	PROPOSED
OVERALL SPAN	8.0'	9.5'
CLEAR SPAN	4.0'	6.0'
CLEAR HEIGHT	2.00'	24.0'
ROADWAY	32.0'	48.0'
WATERWAY	32.0'	48.0'
TYPE	CONC. PILE	316' RC BOX

174.000 Concrete for Box	5517 CY
15 Channel Excavation	365 CY
16 Structure Excavation	125 CY
100 Sub-base of Gravel	980 CY
22 Gravel Surface Course	480 CY
418 Concrete Class #4	68 CY
42 Reinforcing Steel	9050 Lbs
688 Asphalt Base Mat	50 CY
522 18" LGMPAC	40 LF
100 Temp Brk Point of Traffic	1 LS
37 Removal of Present Bridge	1 LS
804 Cable Guard Rail	80 LF
804 Anchors for Cable Guard Rail	4 EA
424 12" Reinforced Concrete Pipe	52 LF

* Reinforcing steel furnished by STATE OF VERMONT. All other materials hauling from State Highway garage on Curie Road to job site and placement in structure.



Approved: *[Signature]* Aug 2, 1944
District Highway Commissioner

Correct: *[Signature]* Aug 2, 1944
Bridge Engineer

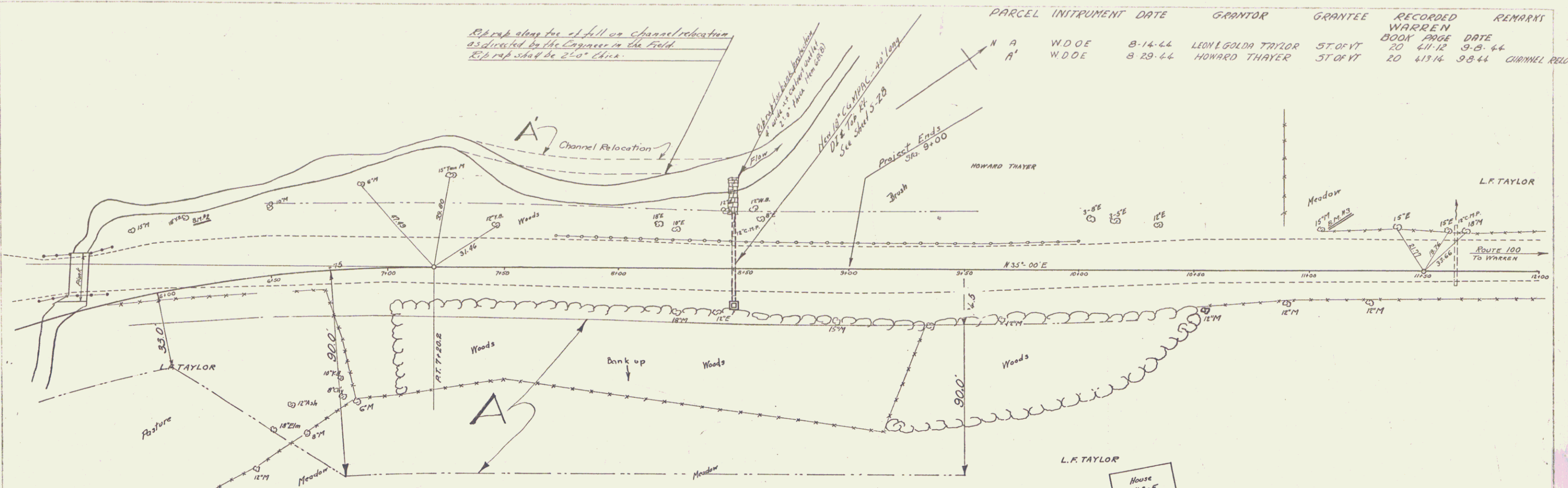
Approved: *[Signature]* Aug 2, 1944
Commissioner of Highways

- List of Sheets:
- Sheet #2 Plan & Profile
 - 3-4 RC Box Details
 - 5 SB-11 Barricades Lights & Signs
 - 6 SB-29 Standard Structures
 - 7-30 Cable Guard Rail
 - 8-7 Cross Sections

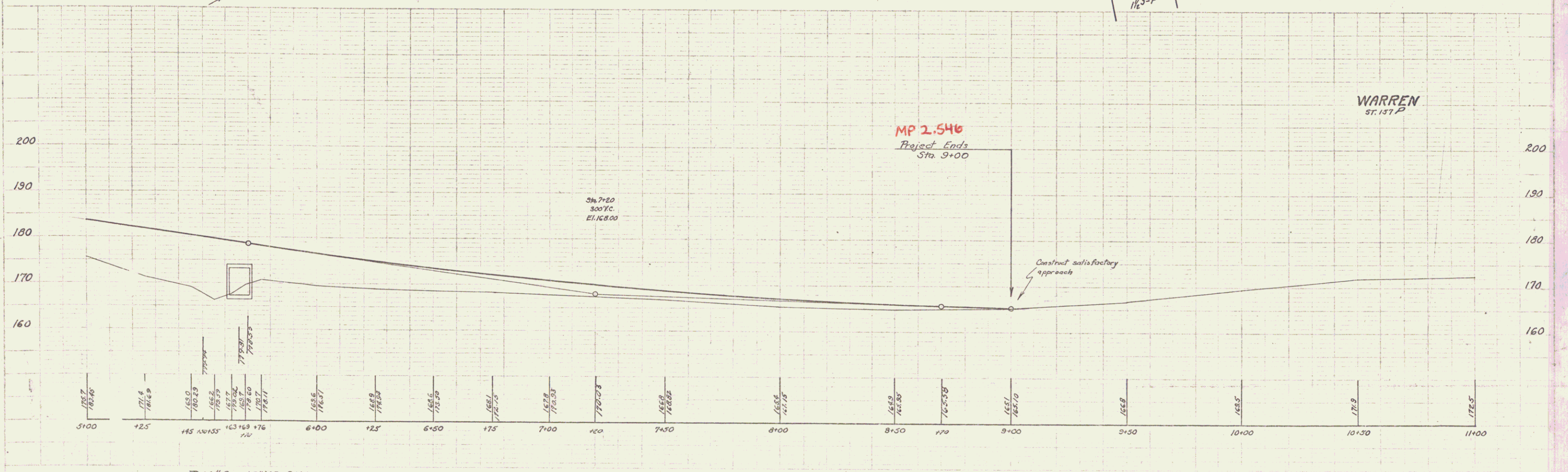
B.M. #1 - 18' Apple 41' Lt. Sta. 2+82 - El. 200.00

B.M. #2 - 18' Y.B. 31' Lt. Sta. 6+18 - El. 166.93

Sheet of 2 sheets



PARCEL	INSTRUMENT	DATE	GRANTOR	GRANTEE	RECORDED	REMARKS
A	W.D.O.E.	8-14-44	LEON & GOLDA TAYLOR	ST. OF VT.	20 411-12	9-B-44
A'	W.D.O.E.	8-29-44	HOWARD THAYER	ST. OF VT.	20 413-14	9-B-44 CHANNEL RELOC.



B.M. #2 - 18" Y.B. 31' Lt. Sta. 6+18 - El. 166.93

B.M. #3 - 15" Maple 16.5' Lt. Sta. 11+04 - El. 173.31

Sheet 2 of 2 P. 15 sheets