

MP 0.722
 STA 0100 Parcel Instrument Date Grantor Grantee Recorded
 BEGINNING OF PROJECT PWA Vt DOCKET 1092 A-B Q.C.D. 5-2-39 George Blair StofW. Book Page Date
 20 279-00 5-4-39

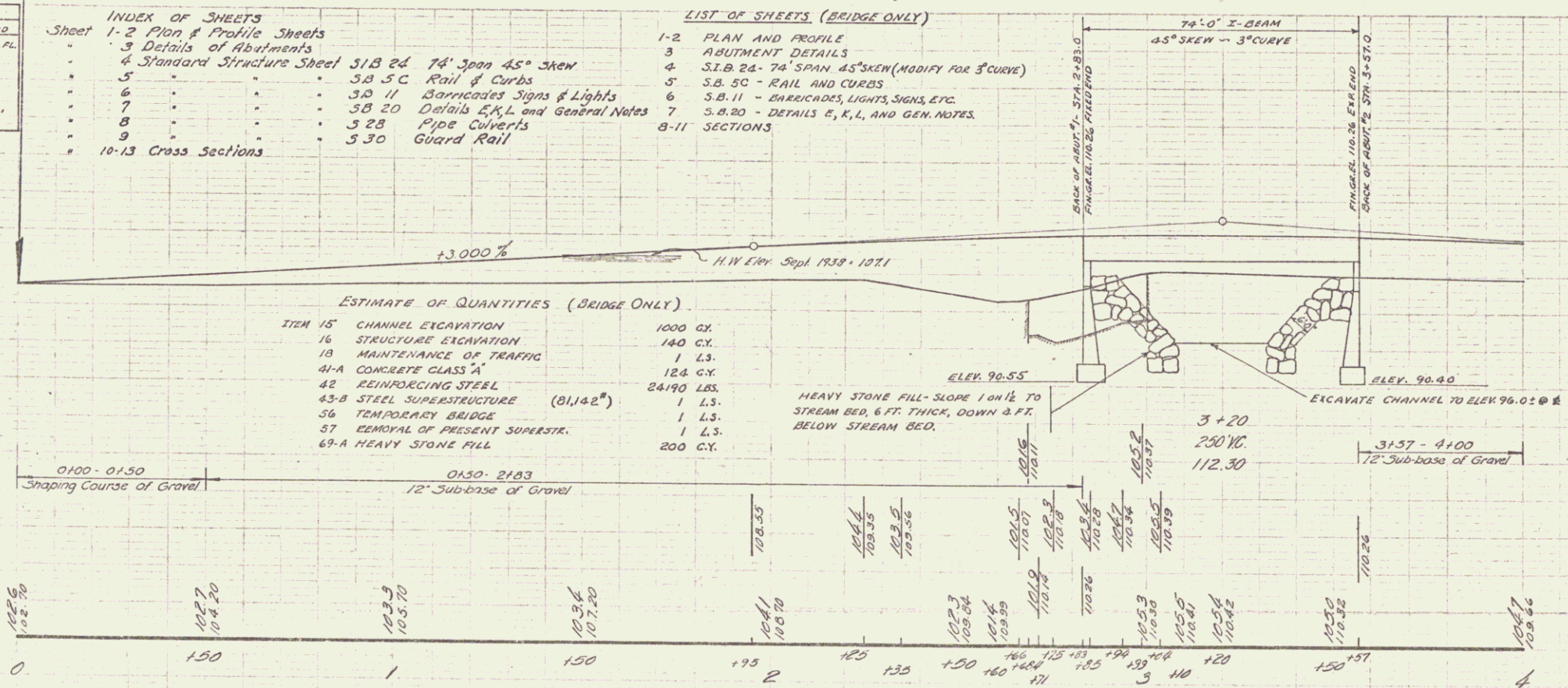
ROUTE - VT 100
 TOWN: Warren
 Project: PWA 1092
 DATE: 12/05/1938
 PIN: 00R618

BRIDGE DATA		
TYPE	PRESENT	PROPOSED
OVERALL LENGTH	38.8'	74'
CLEAR SPAN	28.7'	70'
CLEAR HEIGHT	6'	11'
ROADWAY	20'	24'
WATERWAY	16.0"	33.0"

INDEX OF SHEETS		LIST OF SHEETS (BRIDGE ONLY)	
Sheet	1-2 Plan & Profile Sheets	1-2	PLAN AND PROFILE
3	Details of Abutments	3	ABUTMENT DETAILS
4	Standard Structure Sheet S1B 2d	4	S1B 2d - 74' SPAN, 45° SKEW (MODIFY FOR CURVE)
5	3.0 S.C. Rail & Curbs	5	S.B. 5C - RAIL AND CURBS
6	3.0 1/4 Signposts Signs & Lights	6	S.B. 11 - BARRICADES, LIGHTS, SIGNS, ETC.
7	5.8 2.0 Details E, K, L and General Notes	7	S.B. 20 - DETAILS E, K, L, AND GEN. NOTES
8	3.2 8 Pipe Culverts	8-11	SECTIONS
9	5.3 0 Guard Rail		
10-13	Cross Sections		

ESTIMATE OF QUANTITIES (BRIDGE ONLY)

12M 15" CHANNEL EXCAVATION	1000 CY.
16 STRUCTURE EXCAVATION	140 CY.
10 MAINTENANCE OF TRAFFIC	1 LS.
41-A CONCRETE CLASS 'A'	124 CY.
42 REINFORCING STEEL	2490 LBS.
43-B STEEL SUPERSTRUCTURE (B1142)	1 LS.
36 TEMPORARY BRIDGE	1 LS.
57 REMOVAL OF PRESENT SUPERSTR.	1 LS.
69-A HEAVY STONE FILL	200 CY.



APPROVED: [Signature] 1938
 DISTRICT Highway Commissioner
 CORRECT: [Signature]
 APPROVED: [Signature]
 Commissioner of Highways

WARREN, BRIDGE No. 80
 PWA Vt. DOCKET 1092
 SHEET 1 OF 13