

INDEX OF SHEETS

SHEET NO.	TITLE PAGE
1	TITLE PAGE
2	TYPICAL CROSS SECTION OF IMPROVEMENT (DOUBLE TACK COAT OF REFINED TAR)
3	ROADWAY STANDARD SHEET RS 56-1 (BANKING) WITH PEASTONE SEAL, ITEM 312-A
4	QUANTITY SHEET (ITEMS)
5	QUANTITY SHEET (DRAINAGE)
6-10	EARTHWORK SHEETS
11-22	PLAN & PROFILE SHEETS
23	SUPERSTRUCTURE DETAILS BRIDGE STA. 101+00-101+21
24	DETAILS ABUTMENT #1 BRIDGE STA. 101+00-101+21
25	DETAILS ABUTMENT #2 BRIDGE STA. 101+00-101+21
26	REINFORCING STEEL SCHEDULE BRIDGE STA. 101+00-101+21
27	DETAILS ABUTMENT #1 BRIDGE STA. 178+80-179+64
28	DETAILS ABUTMENT #2
29	SUPERSTRUCTURE DETAILS
30	SUPERSTRUCTURE LAYOUT
31	REINFORCING STEEL SCHEDULE
32	BRIDGE STD. SHEET SB-20-56, DET. A,B,C,D,F OR G,H,K
33	BRIDGE STD. SHEET SB-56-2
34	ROADWAY STANDARD SHEET RS 56-3
35	" " " " -4
36	" " " " -6
37	" " " " -9
38	" " " " -11
39	" " " " -12
40-102	CROSS SECTIONS
103-106	CHANNEL SECTIONS

STATE OF VERMONT DEPARTMENT OF HIGHWAYS

PROPOSED IMPROVEMENT

FEDERAL AID SECONDARY PROJECT

TOWN OF WARREN

COUNTY OF WASHINGTON

WARREN - GRANVILLE ROAD

VERMONT ROUTE 100

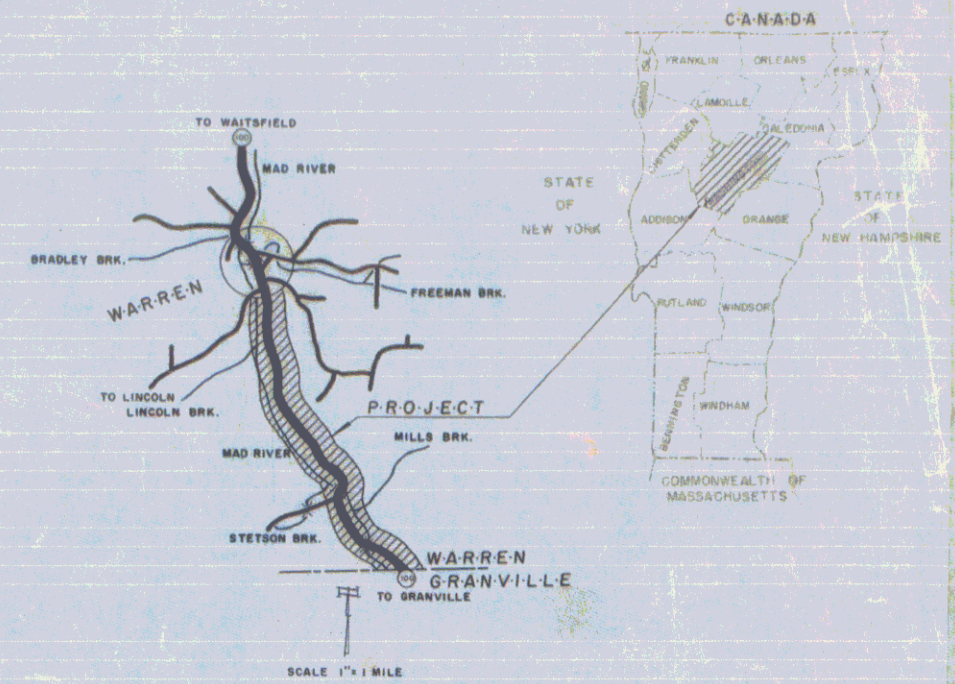
BEGINNING AT THE GRANVILLE - WARREN TOWN LINE ON VT. RTE. 100 AND EXTENDING NORTHERLY 3.22 MILES

LENGTH OF ROADWAY 16,842.2 FEET = 3.190 MILES

LENGTH OF BRIDGE 84.0 FEET = 0.016 MILES

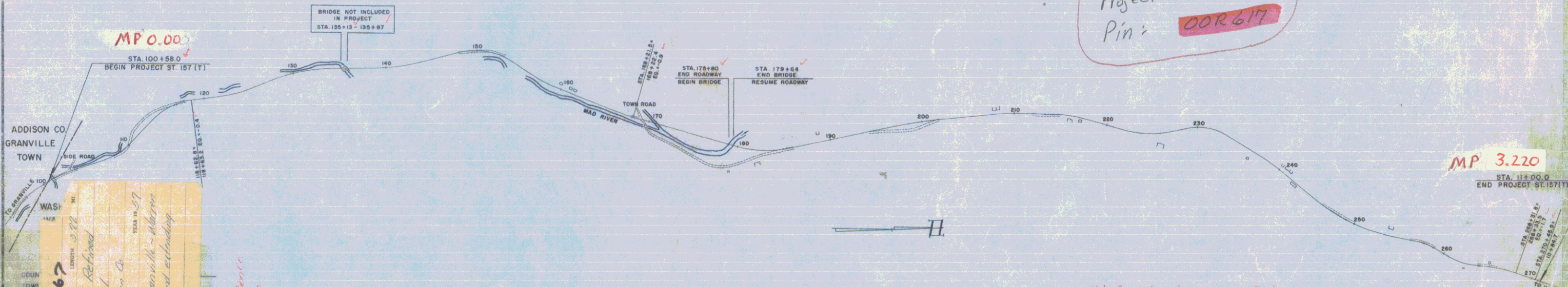
LENGTH OF PROJECT 16,926.2 FEET = 3.2057 MILES

PER ROAD DISTRICT NO.	STATE PROJECT NO.	SHEET NO.	TOTAL SHEETS
VT	ST157T	1	106



Project Name & Number	Notes	Drawn Area
Warren ST-157(T)	30,29854	
<i>Revised Plans</i>		
<i>Mileage</i>		
Sub base of gravel	As per M.P.P. in original plan	
Crushed gravel	As per M.P.P. in original plan	
Reinforced concrete	As per M.P.P. in original plan	
Structural steel	As per M.P.P. in original plan	
Concrete Class B	As per M.P.P. in original plan	
Asphalt concrete	As per M.P.P. in original plan	
Contractor	W. J. Smith	Construction started September 1956
Inspector	W. J. Smith	Construction completed September 1956

Date: 08/22/1956
 Project: ST157T
 Pin: 00R617



WARREN

ST-157(T)
 Double Tack Coat of Refined Tar
 Top of Peastone Seal
 Construction Co.
 Location: Beginning of the Warren - Granville - Warren Road
 Length: 12 miles

GROUND ELEVATION	DATUM	LINE
GRADE ELEVATION	DATUM	LINE
CURVE DATA		
DEFLECTION OF ANGLE	Δ	
DEGREE OF CURVE	D	
RADIUS OF CURVE	R	
TANGENT DISTANCE	T	
LENGTH OF CURVE	L	
EXTERNAL DISTANCE	E	
POINT OF INTERSECTION	P.I.	
POINT OF CURVE	P.C.	
POINT OF TANGENT	P.T.	
POINT ON TANGENT	P.O.T.	
POINT ON SUB-TANGENT	P.O.S.T.	

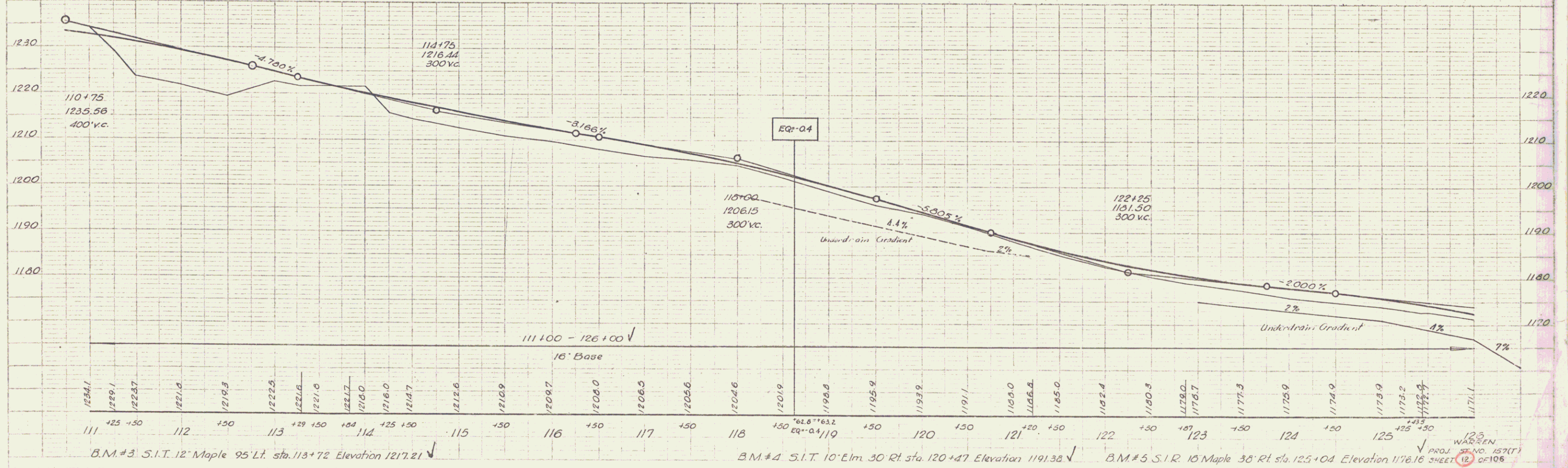
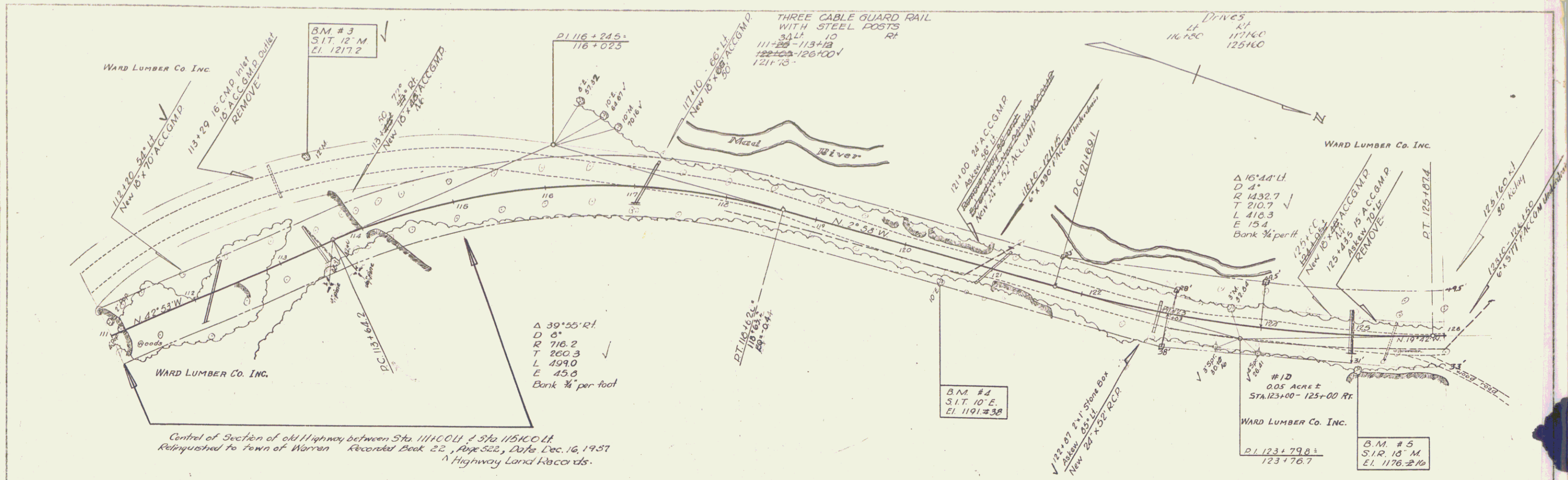
SCALES	
TITLE	1" = 500'
TYPICAL	1" = 2'
PLAN	1" = 50'
PROFILE HORIZONTAL	1" = 50'
PROFILE VERTICAL	1" = 10'
CROSS-SECTIONS	1" = 10'

Note: Any information concerning final quantities, amounts or other details relative to this project may be found in either the field books or the estimate file.

THESE PLANS ARE SUBJECT TO SUCH REVISIONS AS MAY BE REQUIRED BY THE BUREAU OF PUBLIC ROADS OR THE COMMISSIONER OF HIGHWAYS.
 CONSTRUCTION IS TO BE CARRIED ON IN ACCORDANCE WITH THE PLANS AND THE STANDARD ROAD AND BRIDGE SPECIFICATIONS BY THE BUREAU OF PUBLIC ROADS, INCLUDING ALL SUBSEQUENT APPROVED REVISIONS AND SUCH REVISED SPECIFICATIONS AND SPECIAL PROVISIONS AS ARE SUBMITTED WITH THE PLANS.

APPROVED DISTRICT ENGINEER DATE Aug 12, 1956	APPROVED BRIDGE ENGINEER DATE Aug 19, 1956	APPROVED DISTRICT ENGINEER DATE Aug 22, 1956	APPROVED HIGHWAY ENGINEER DATE Aug 10, 1956	APPROVED DATE Aug 25, 1956
DEPARTMENT OF COMMERCE BUREAU OF PUBLIC ROADS				
APPROVED				
DISTRICT ENGINEER				
PROJECT ST. NO. 157(T)				
SHEET 1 OF 106 SHEETS				

17-35
 12-35
 1/56
 Surveying
 1/56
 1/56

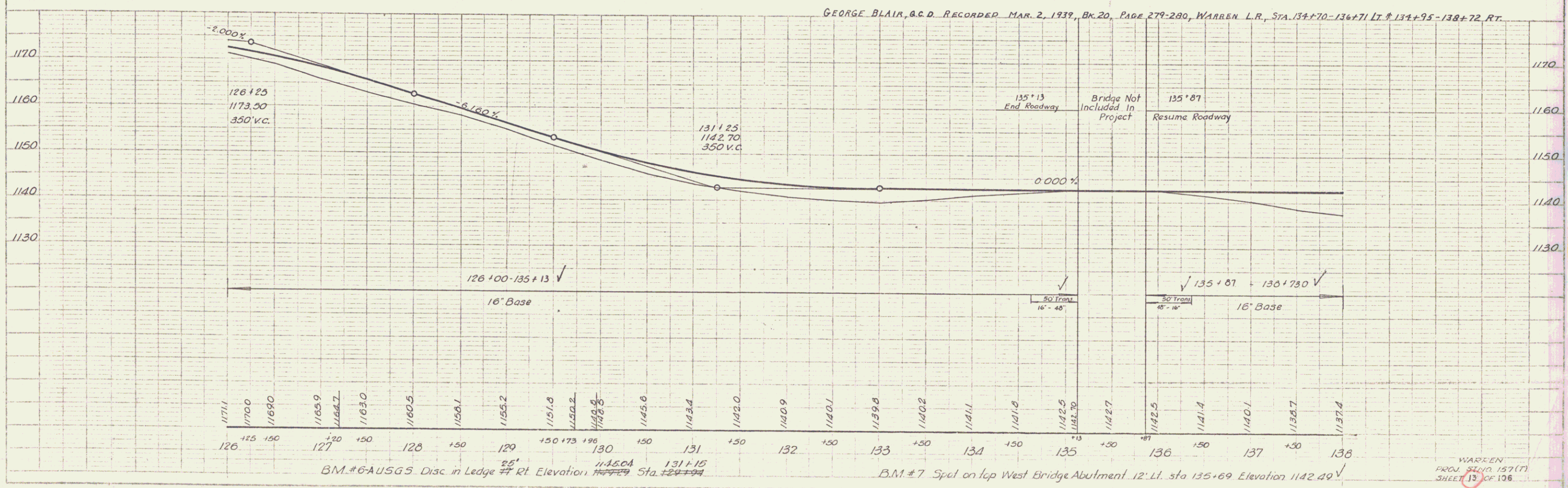
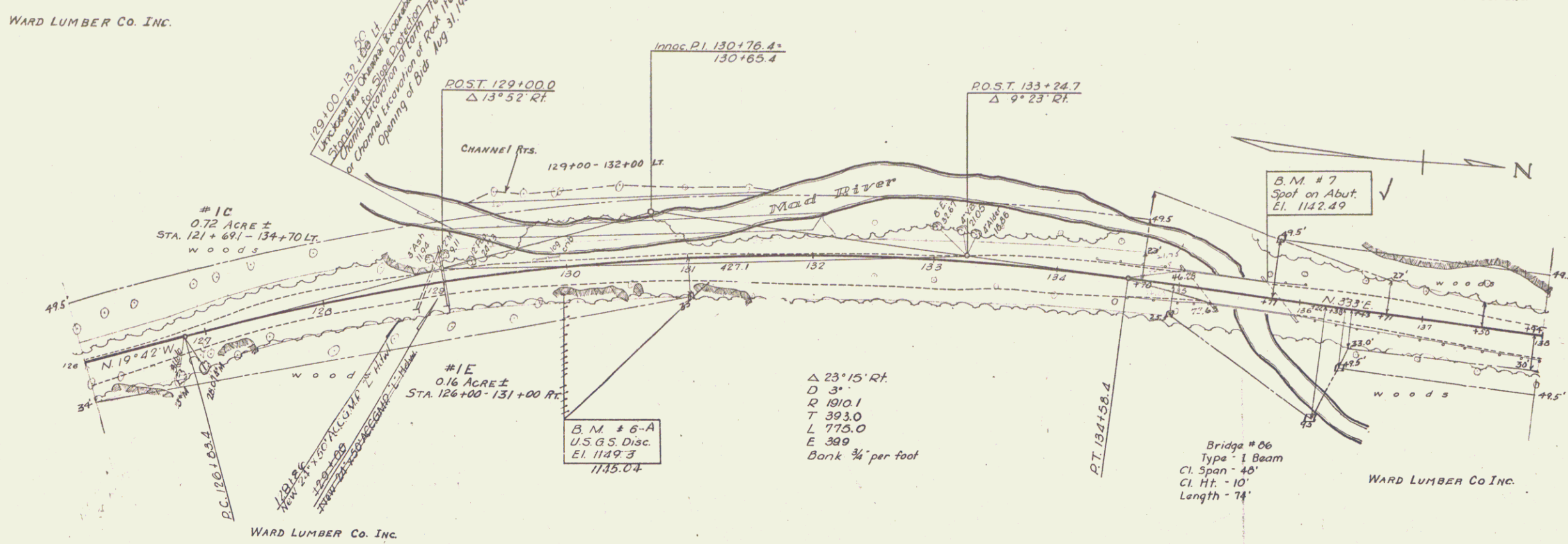


17-35
 12-35
 1/56
 Surveying
 1/56
 1/56

PLAN
 SHOWING
 OPERATING
 W.L.
 TRACED

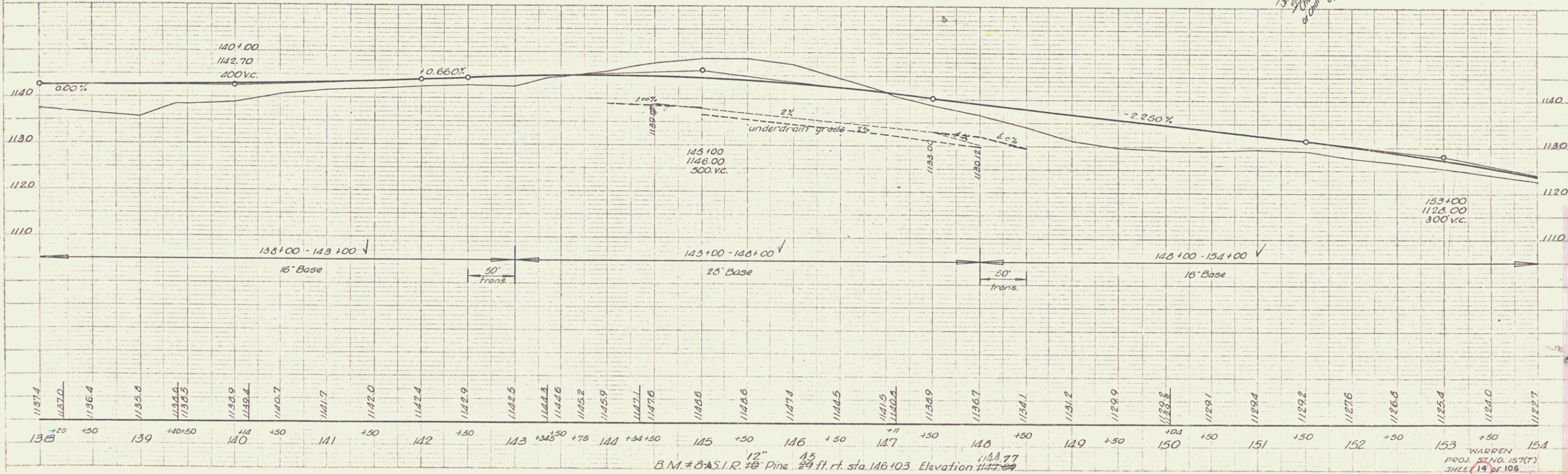
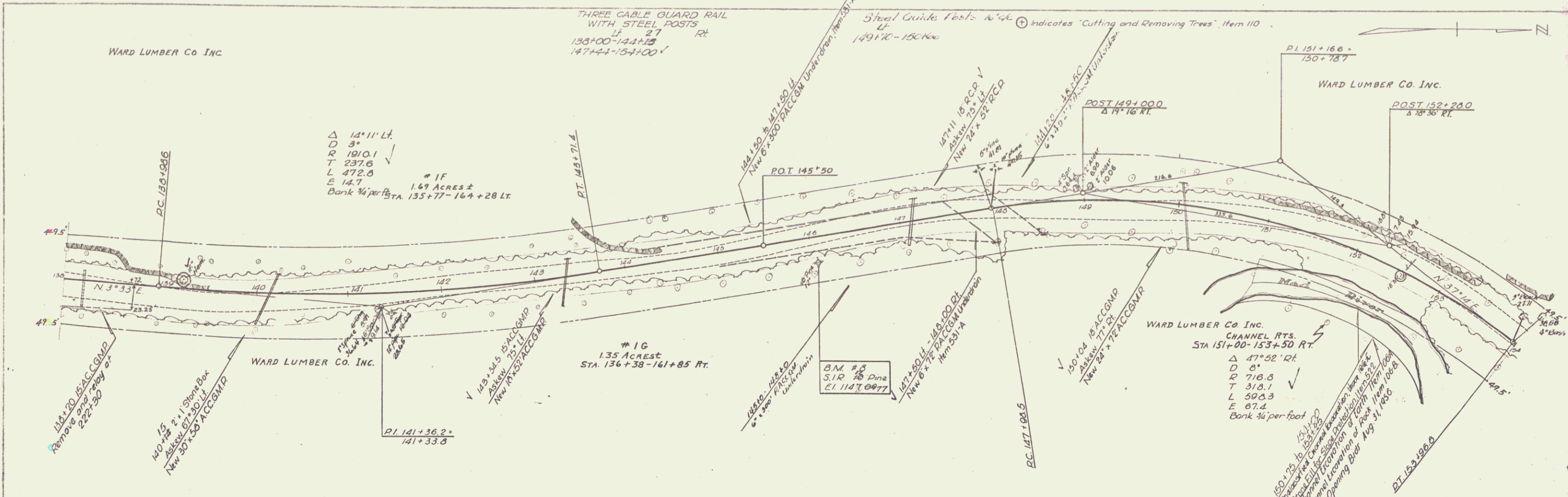
WARD LUMBER CO. INC.
 PROJECT NO. 157 (T)
 SHEET 13 OF 136

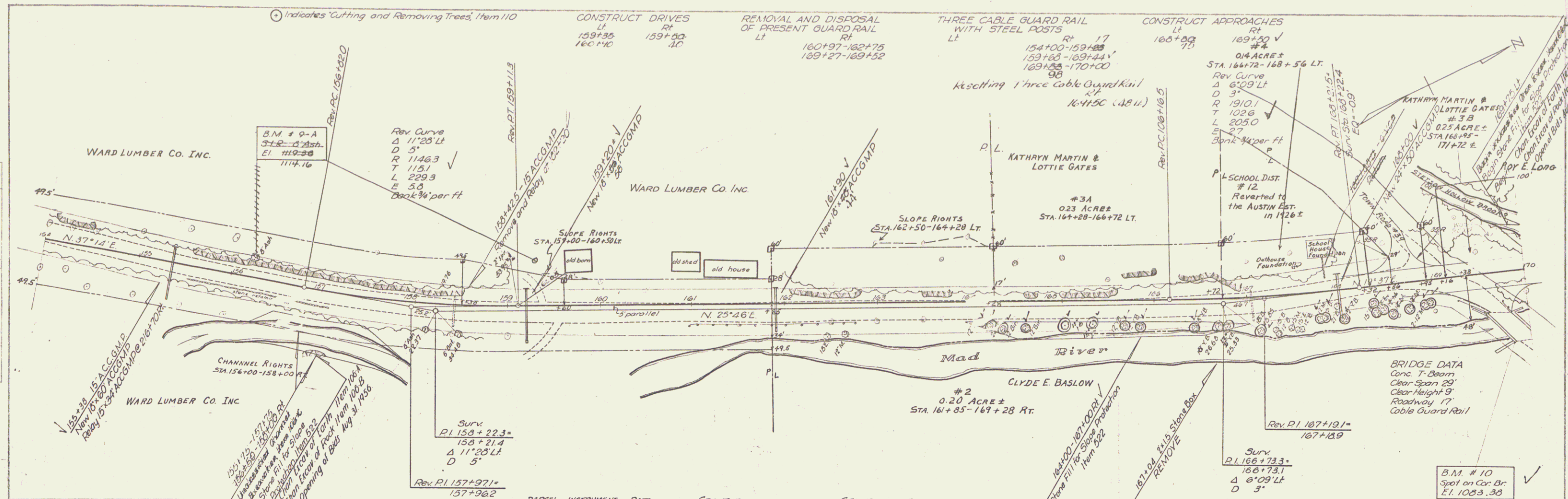
REMOVAL AND DISPOSAL OF PRESENT GUARD RAIL		THREE CABLE GUARD RAIL WITH STEEL POSTS	
STATION	CH	STATION	RT
134+34	135+00	126+00	126+00
134+60	135+27	134+63	135+27
135+78	136+04	135+74	137+28
136+00	137+00	136+00	137+00
		136+86	137+14
		136+18	137+00



10-55
7-56
Sprockling
WARD LUMBER CO. INC.

10-55
7-56
Sprockling
WARD LUMBER CO. INC.

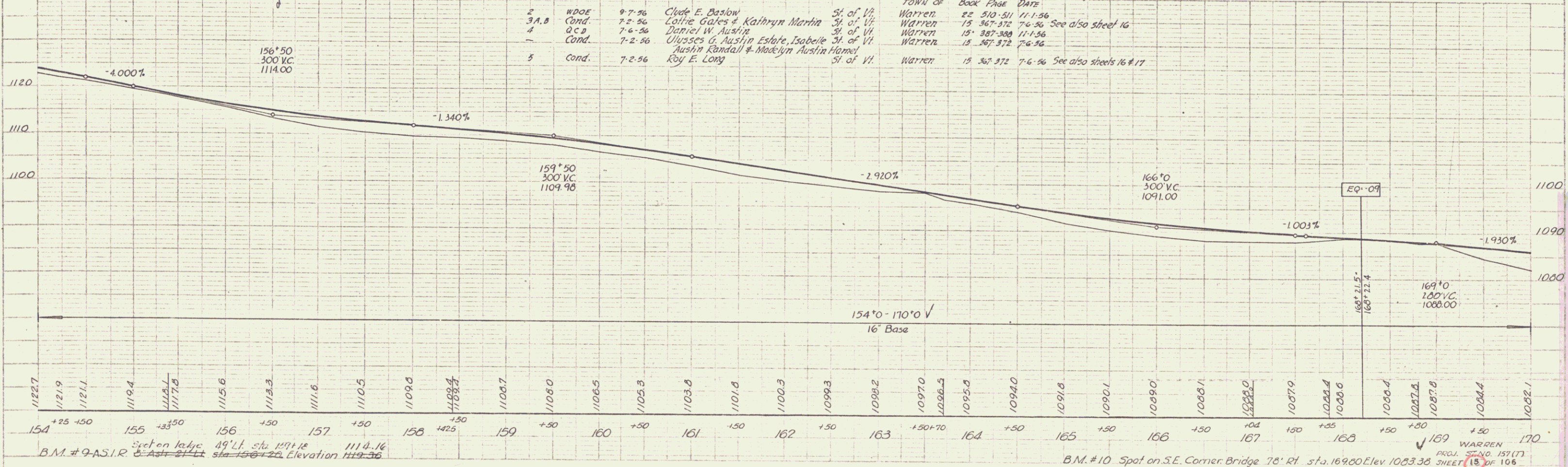




PLV
 DATE
 BY
 CHECKED
 1/15/56
 1/15/56
 7-56

PROVIN
 DATE
 BY
 CHECKED
 1/15/56
 1/15/56
 7-56

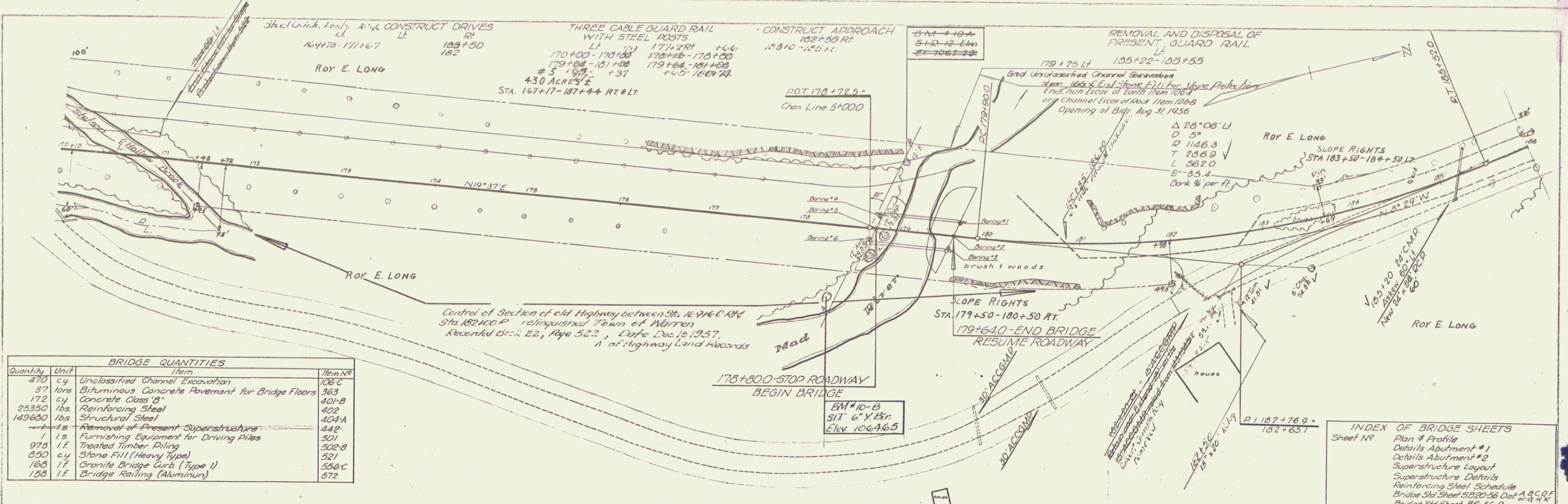
PARCEL	INSTRUMENT	DATE	GRANTOR	GRANTEE	RECORDED	BOOK	PAGE	DATE	REMARKS
2	W.D.C.E.	9-7-56	Clyde E. Baslow	St. of Vt.	Warren	22	510-511	11-1-56	
3A, B	Cond.	7-2-56	Lottie Gates & Kathryn Martin	St. of Vt.	Warren	15	367-372	7-6-56	See also sheet 16
4	O.C.B.	7-6-56	Daniel W. Austin	St. of Vt.	Warren	15	387-388	11-1-56	
5	Cond.	7-2-56	Ulysses G. Austin Estate, Isabelle Austin Randall & Madelyn Austin Hornel	St. of Vt.	Warren	15	367-372	7-6-56	See also sheets 16 & 17



11227
 11219
 11211
 11194
 11175
 11156
 11133
 11116
 11105
 11090
 11074
 11067
 11060
 11065
 11053
 11038
 11018
 11003
 10993
 10982
 10970
 10965
 10958
 10940
 10918
 10901
 10890
 10881
 10860
 10850
 10844
 10835
 10824
 10815
 10804
 10784
 10775
 10764
 10755
 10744
 10735
 10724
 10715
 10704
 10695
 10684
 10675
 10664
 10655
 10644
 10635
 10624
 10615
 10604
 10595
 10584
 10575
 10564
 10555
 10544
 10535
 10524
 10515
 10504
 10495
 10484
 10475
 10464
 10455
 10444
 10435
 10424
 10415
 10404
 10395
 10384
 10375
 10364
 10355
 10344
 10335
 10324
 10315
 10304
 10295
 10284
 10275
 10264
 10255
 10244
 10235
 10224
 10215
 10204
 10195
 10184
 10175
 10164
 10155
 10144
 10135
 10124
 10115
 10104
 10095
 10084
 10075
 10064
 10055
 10044
 10035
 10024
 10015
 10004
 9995
 9984
 9975
 9964
 9955
 9944
 9935
 9924
 9915
 9904
 9895
 9884
 9875
 9864
 9855
 9844
 9835
 9824
 9815
 9804
 9795
 9784
 9775
 9764
 9755
 9744
 9735
 9724
 9715
 9704
 9695
 9684
 9675
 9664
 9655
 9644
 9635
 9624
 9615
 9604
 9595
 9584
 9575
 9564
 9555
 9544
 9535
 9524
 9515
 9504
 9495
 9484
 9475
 9464
 9455
 9444
 9435
 9424
 9415
 9404
 9395
 9384
 9375
 9364
 9355
 9344
 9335
 9324
 9315
 9304
 9295
 9284
 9275
 9264
 9255
 9244
 9235
 9224
 9215
 9204
 9195
 9184
 9175
 9164
 9155
 9144
 9135
 9124
 9115
 9104
 9095
 9084
 9075
 9064
 9055
 9044
 9035
 9024
 9015
 9004
 8995
 8984
 8975
 8964
 8955
 8944
 8935
 8924
 8915
 8904
 8895
 8884
 8875
 8864
 8855
 8844
 8835
 8824
 8815
 8804
 8795
 8784
 8775
 8764
 8755
 8744
 8735
 8724
 8715
 8704
 8695
 8684
 8675
 8664
 8655
 8644
 8635
 8624
 8615
 8604
 8595
 8584
 8575
 8564
 8555
 8544
 8535
 8524
 8515
 8504
 8495
 8484
 8475
 8464
 8455
 8444
 8435
 8424
 8415
 8404
 8395
 8384
 8375
 8364
 8355
 8344
 8335
 8324
 8315
 8304
 8295
 8284
 8275
 8264
 8255
 8244
 8235
 8224
 8215
 8204
 8195
 8184
 8175
 8164
 8155
 8144
 8135
 8124
 8115
 8104
 8095
 8084
 8075
 8064
 8055
 8044
 8035
 8024
 8015
 8004
 7995
 7984
 7975
 7964
 7955
 7944
 7935
 7924
 7915
 7904
 7895
 7884
 7875
 7864
 7855
 7844
 7835
 7824
 7815
 7804
 7795
 7784
 7775
 7764
 7755
 7744
 7735
 7724
 7715
 7704
 7695
 7684
 7675
 7664
 7655
 7644
 7635
 7624
 7615
 7604
 7595
 7584
 7575
 7564
 7555
 7544
 7535
 7524
 7515
 7504
 7495
 7484
 7475
 7464
 7455
 7444
 7435
 7424
 7415
 7404
 7395
 7384
 7375
 7364
 7355
 7344
 7335
 7324
 7315
 7304
 7295
 7284
 7275
 7264
 7255
 7244
 7235
 7224
 7215
 7204
 7195
 7184
 7175
 7164
 7155
 7144
 7135
 7124
 7115
 7104
 7095
 7084
 7075
 7064
 7055
 7044
 7035
 7024
 7015
 7004
 6995
 6984
 6975
 6964
 6955
 6944
 6935
 6924
 6915
 6904
 6895
 6884
 6875
 6864
 6855
 6844
 6835
 6824
 6815
 6804
 6795
 6784
 6775
 6764
 6755
 6744
 6735
 6724
 6715
 6704
 6695
 6684
 6675
 6664
 6655
 6644
 6635
 6624
 6615
 6604
 6595
 6584
 6575
 6564
 6555
 6544
 6535
 6524
 6515
 6504
 6495
 6484
 6475
 6464
 6455
 6444
 6435
 6424
 6415
 6404
 6395
 6384
 6375
 6364
 6355
 6344
 6335
 6324
 6315
 6304
 6295
 6284
 6275
 6264
 6255
 6244
 6235
 6224
 6215
 6204
 6195
 6184
 6175
 6164
 6155
 6144
 6135
 6124
 6115
 6104
 6095
 6084
 6075
 6064
 6055
 6044
 6035
 6024
 6015
 6004
 5995
 5984
 5975
 5964
 5955
 5944
 5935
 5924
 5915
 5904
 5895
 5884
 5875
 5864
 5855
 5844
 5835
 5824
 5815
 5804
 5795
 5784
 5775
 5764
 5755
 5744
 5735
 5724
 5715
 5704
 5695
 5684
 5675
 5664
 5655
 5644
 5635
 5624
 5615
 5604
 5595
 5584
 5575
 5564
 5555
 5544
 5535
 5524
 5515
 5504
 5495
 5484
 5475
 5464
 5455
 5444
 5435
 5424
 5415
 5404
 5395
 5384
 5375
 5364
 5355
 5344
 5335
 5324
 5315
 5304
 5295
 5284
 5275
 5264
 5255
 5244
 5235
 5224
 5215
 5204
 5195
 5184
 5175
 5164
 5155
 5144
 5135
 5124
 5115
 5104
 5095
 5084
 5075
 5064
 5055
 5044
 5035
 5024
 5015
 5004
 4995
 4984
 4975
 4964
 4955
 4944
 4935
 4924
 4915
 4904
 4895
 4884
 4875
 4864
 4855
 4844
 4835
 4824
 4815
 4804
 4795
 4784
 4775
 4764
 4755
 4744
 4735
 4724
 4715
 4704
 4695
 4684
 4675
 4664
 4655
 4644
 4635
 4624
 4615
 4604
 4595
 4584
 4575
 4564
 4555
 4544
 4535
 4524
 4515
 4504
 4495
 4484
 4475
 4464
 4455
 4444
 4435
 4424
 4415
 4404
 4395
 4384
 4375
 4364
 4355
 4344
 4335
 4324
 4315
 4304
 4295
 4284
 4275
 4264
 4255
 4244
 4235
 4224
 4215
 4204
 4195
 4184
 4175
 4164
 4155
 4144
 4135
 4124
 4115
 4104
 4095
 4084
 4075
 4064
 4055
 4044
 4035
 4024
 4015
 4004
 3995
 3984
 3975
 3964
 3955
 3944
 3935
 3924
 3915
 3904
 3895
 3884
 3875
 3864
 3855
 3844
 3835
 3824
 3815
 3804
 3795
 3784
 3775
 3764
 3755
 3744
 3735
 3724
 3715
 3704
 3695
 3684
 3675
 3664
 3655
 3644
 3635
 3624
 3615
 3604
 3595
 3584
 3575
 3564
 3555
 3544
 3535
 3524
 3515
 3504
 3495
 3484
 3475
 3464
 3455
 3444
 3435
 3424
 3415
 3404
 3395
 3384
 3375
 3364
 3355
 3344
 3335
 3324
 3315
 3304
 3295
 3284
 3275
 3264
 3255
 3244
 3235
 3224
 3215
 3204
 3195
 3184
 3175
 3164
 3155
 3144
 3135
 3124
 3115
 3104
 3095
 3084
 3075
 3064
 3055
 3044
 3035
 3024
 3015
 3004
 2995
 2984
 2975
 2964
 2955
 2944
 2935
 2924
 2915
 2904
 2895
 2884
 2875
 2864
 2855
 2844
 2835
 2824
 2815
 2804
 2795
 2784
 2775
 2764
 2755
 2744
 2735
 2724
 2715
 2704
 2695
 2684
 2675
 2664
 2655
 2644
 2635
 2624
 2615
 2604
 2595
 2584
 2575
 2564
 2555
 2544
 2535
 2524
 2515
 2504
 2495
 2484
 2475
 2464
 2455
 2444
 2435
 2424
 2415
 2404
 2395
 2384
 2375
 2364
 2355
 2344
 2335
 2324
 2315
 2304
 2295
 2284
 2275
 2264
 2255
 2244
 2235
 2224
 2215
 2204
 2195
 2184
 2175
 2164
 2155
 2144
 2135
 2124
 2115
 2104
 2095
 2084
 2075
 2064
 2055
 2044
 2035
 2024
 2015
 2004
 1995
 1984
 1975
 1964
 1955
 1944
 1935
 1924
 1915
 1904
 1895
 1884
 1875
 1864
 1855
 1844
 1835
 1824
 1815
 1804
 1795
 1784
 1775
 1764
 1755
 1744
 1735
 1724
 1715
 1704
 1695
 1684
 1675
 1664
 1655
 1644
 1635
 1624
 1615
 1604
 1595
 1584
 1575
 1564
 1555
 1544
 1535
 1524
 1515
 1504
 1495
 1484
 1475
 1464
 1455
 1444
 1435
 1424
 1415
 1404
 1395
 1384
 1375
 1364
 1355
 1344
 1335
 1324
 1315
 1304
 1295
 1284
 1275
 1264
 1255
 1244
 1235
 1224
 1215
 1204
 1195
 1184
 1175
 1164
 1155
 1144
 1135
 1124
 1115
 1104
 1095
 1084
 1075
 1064
 1055
 1044
 1035
 1024
 1015
 1004
 995
 984
 975
 964
 955
 944
 935
 924
 915
 904
 895
 884
 875
 864
 855
 844
 835
 824
 815
 804
 795
 784
 775
 764
 755
 744
 735
 724
 715
 704
 695
 684
 675
 664
 655
 644
 635
 624
 615
 604
 595
 584
 575
 564
 555
 544
 535
 524
 515
 504
 495
 484
 475
 464
 455
 444
 435
 424
 415
 404
 395
 384
 375
 364
 355
 344
 335
 324
 315
 304
 295
 284
 275
 264
 255
 244
 235
 224
 215
 204
 195
 184
 175
 164
 155
 144
 135
 124
 115
 104
 95
 84
 75
 64
 55
 44
 35
 24
 15
 4
 3
 2
 1

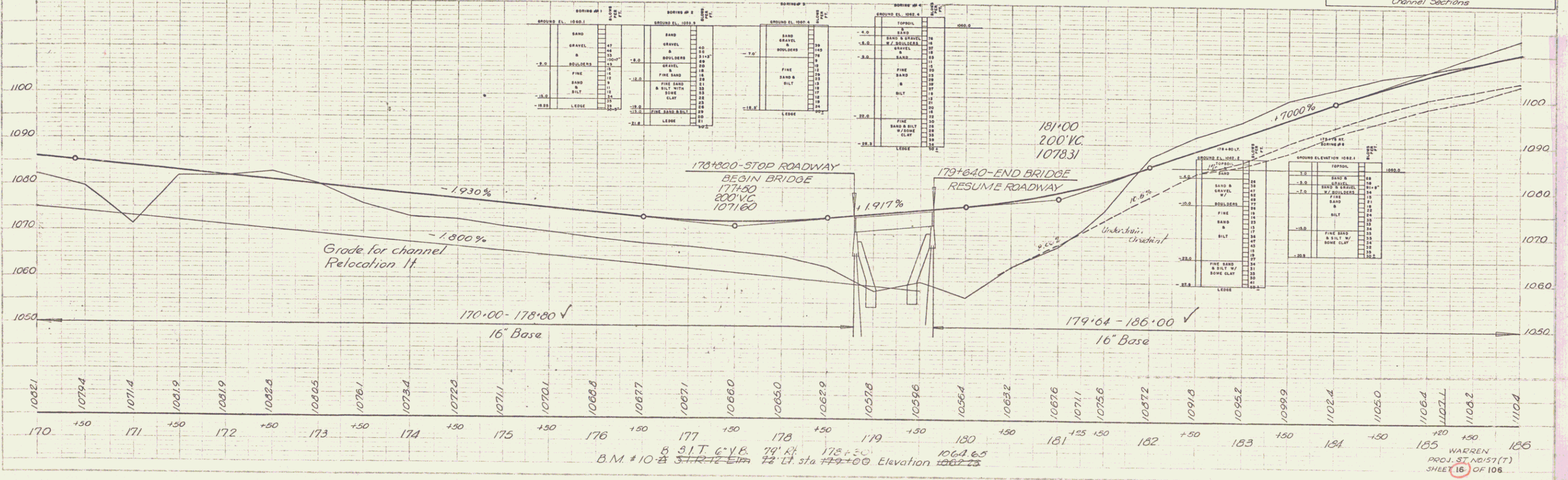
B.M. # 9 A.S.I.R. Spot on S.E. Corner of 49' x 114' 16" lot. Elev. 1114.16

B.M. # 10 Spot on S.E. Corner Bridge 78' x 17' s.t.a. 16900 Elev. 1083.38



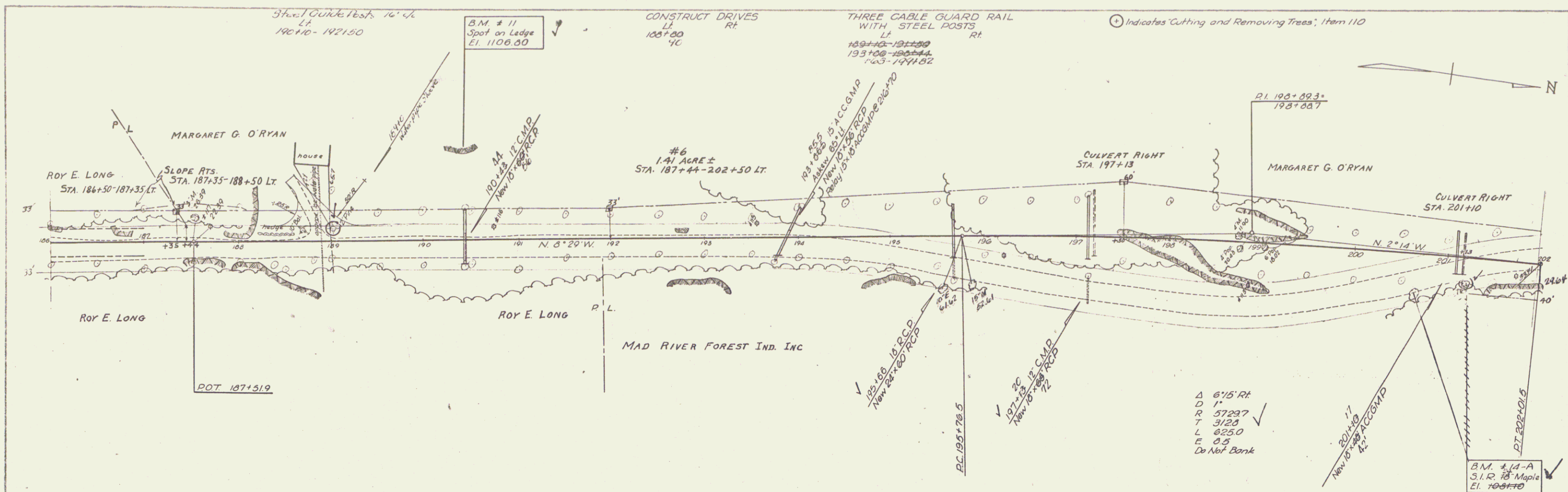
BRIDGE QUANTITIES		
Quantity	Unit	Item
470	c.y.	Unclassified Channel Excavation
37	tons	Bituminous Concrete Pavement for Bridge Floors
72	c.y.	Concrete Class B
23350	lbs.	Reinforcing Steel
149600	lbs.	Structural Steel
1	ls.	Removal of Present Superstructure
1	ls.	Furnishing Equipment for Driving Piles
975	l.f.	Treated Timber Piling
650	c.y.	Stone Fill (Heavy Type)
183	l.f.	Granite Bridge Curb (Type I)
150	l.f.	Bridge Railing (Aluminum)
		106C
		401-B
		402
		403A
		442
		501
		502-B
		521
		556C
		572

INDEX OF BRIDGE SHEETS	
Sheet No.	Plan & Profile
	Details Abutment #1
	Details Abutment #2
	Superstructure Layout
	Superstructure Details
	Reinforcing Steel Schedule
	Bridge Std. Sheet SB-20-56 Det. A, B, C, D, E
	Bridge Std. Sheet BS-56-2
	Channel Sections

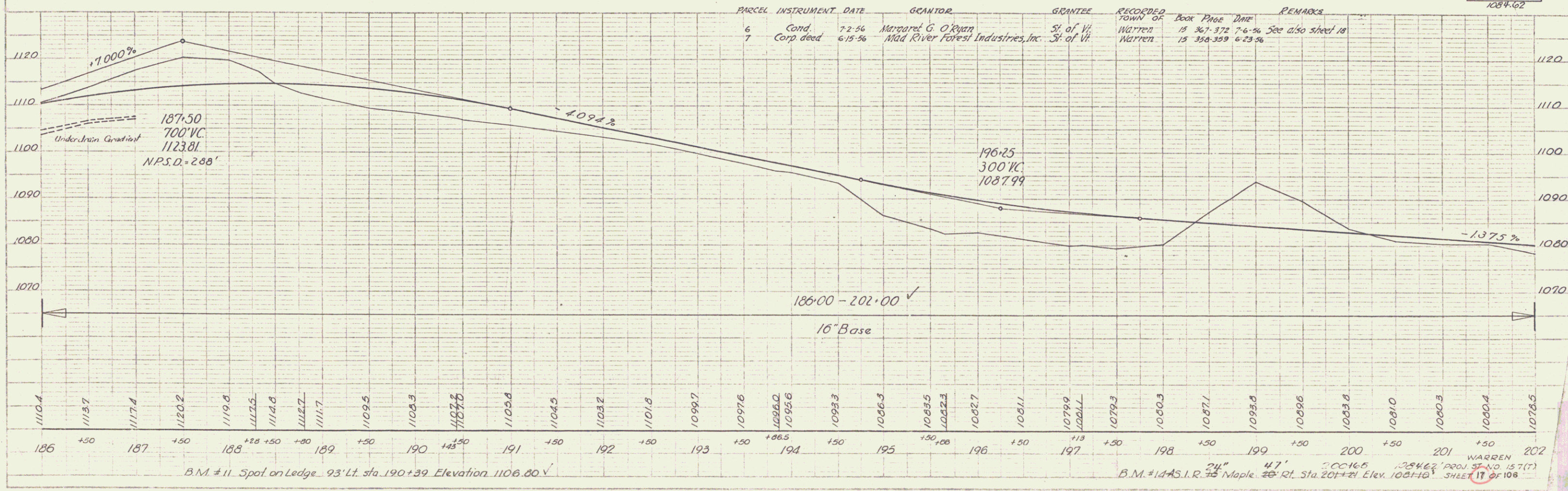


11-53
 1-56
 7-56
 11-53
 1-56
 7-56
 11-53
 1-56
 7-56

11-53
 1-56
 7-56
 11-53
 1-56
 7-56
 11-53
 1-56
 7-56



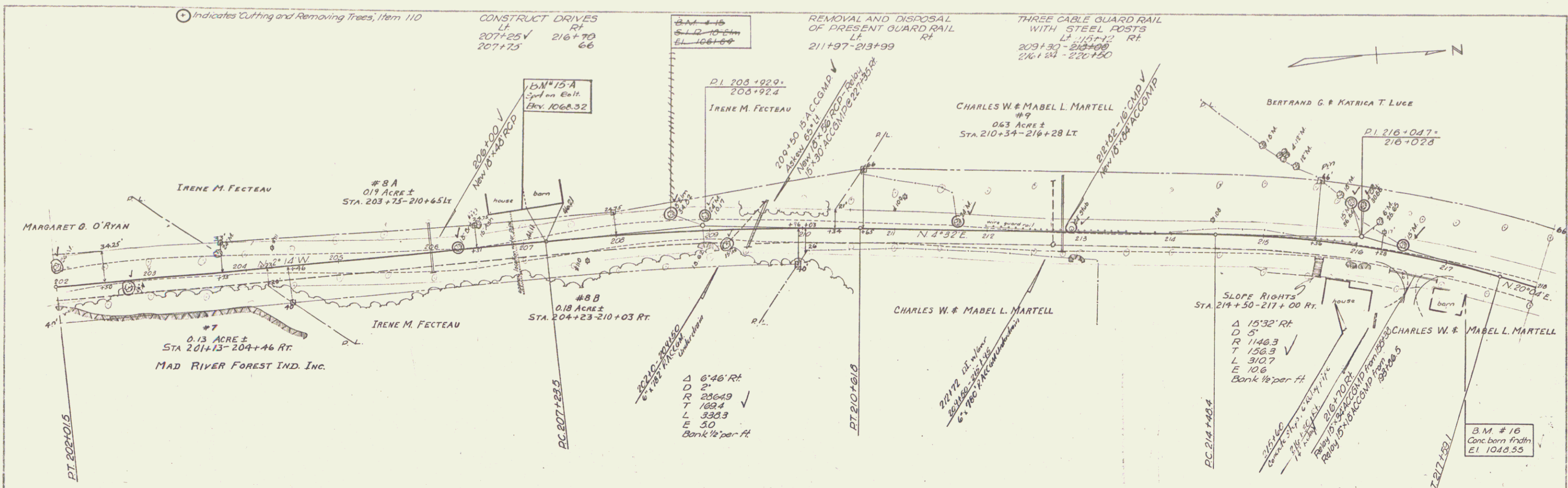
P.M. 1-56
 S. 1-56
 MADE BY
 TRACED



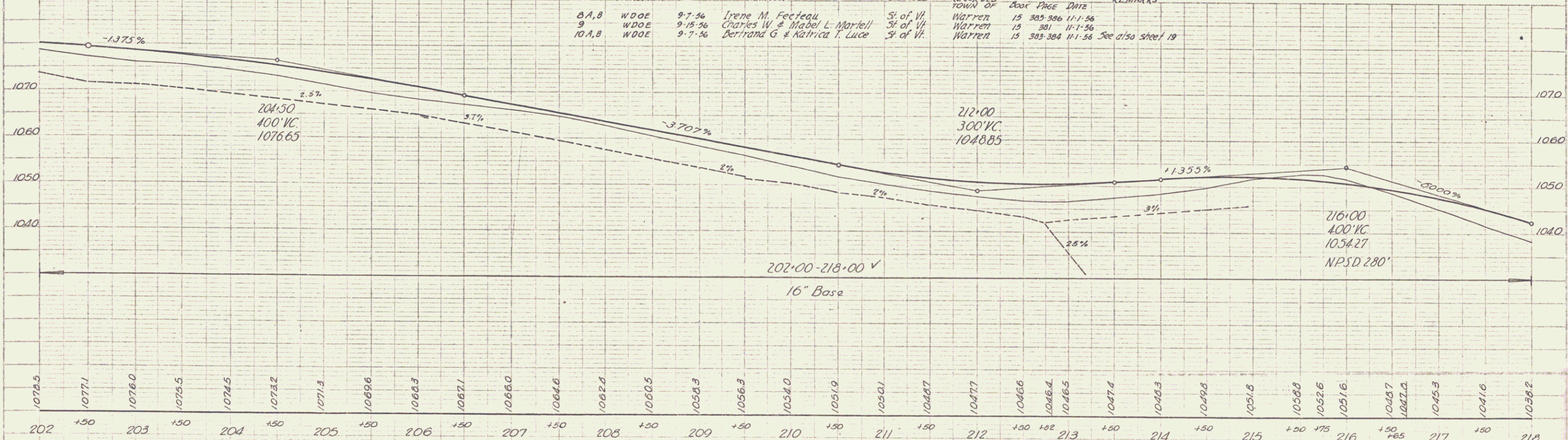
PARCEL	INSTRUMENT	DATE	GRANTOR	GRANTEE	TOWN OF	BOOK	PAGE	DATE	REMARKS
6	Cond.	7-2-56	Margaret G. O'Ryan	St. of Vt.	Warren	15	367-372	7-6-56	See also sheet 18
7	Corp deed	6-15-56	Mad River Forest Industries, Inc.	St. of Vt.	Warren	15	358-359	6-23-56	

UNDERSTAND GRADIENT
 187+50
 700' VC
 1123.81
 N.P.S.D. = 288'

B.M. #11 Spot on Ledge 93' Lt. Sta. 190+39 Elevation 1106.80 ✓
 B.M. #14 AS I.R. 35 Maple 20' Rt. Sta. 201+21 Elev. 1084.16
 WARREN
 SHEET 17 OF 108



PARCEL	INSTRUMENT	DATE	GRANTOR	GRANTEE	RECORDED TOWN OF	BOOK PAGE	DATE	REMARKS
8A, B	WDOE	9-7-36	Irene M. Fecteau	St. of Vh.	Warren	15 305-306	11-1-36	
9	WDOE	9-15-36	Charles W & Mabel L. Martell	St. of Vh.	Warren	15 301	11-1-36	
10A, B	WDOE	9-7-36	Bertrand G & Matrica T. Luce	St. of Vh.	Warren	15 303-304	11-1-36	See d/50 sheet 19

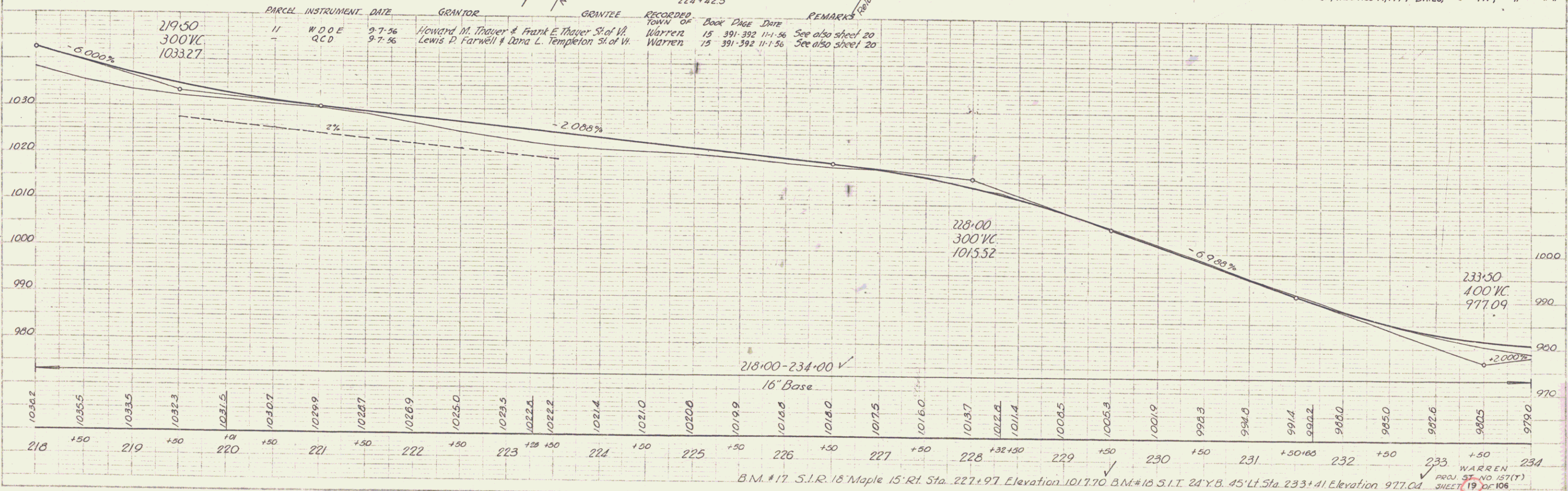
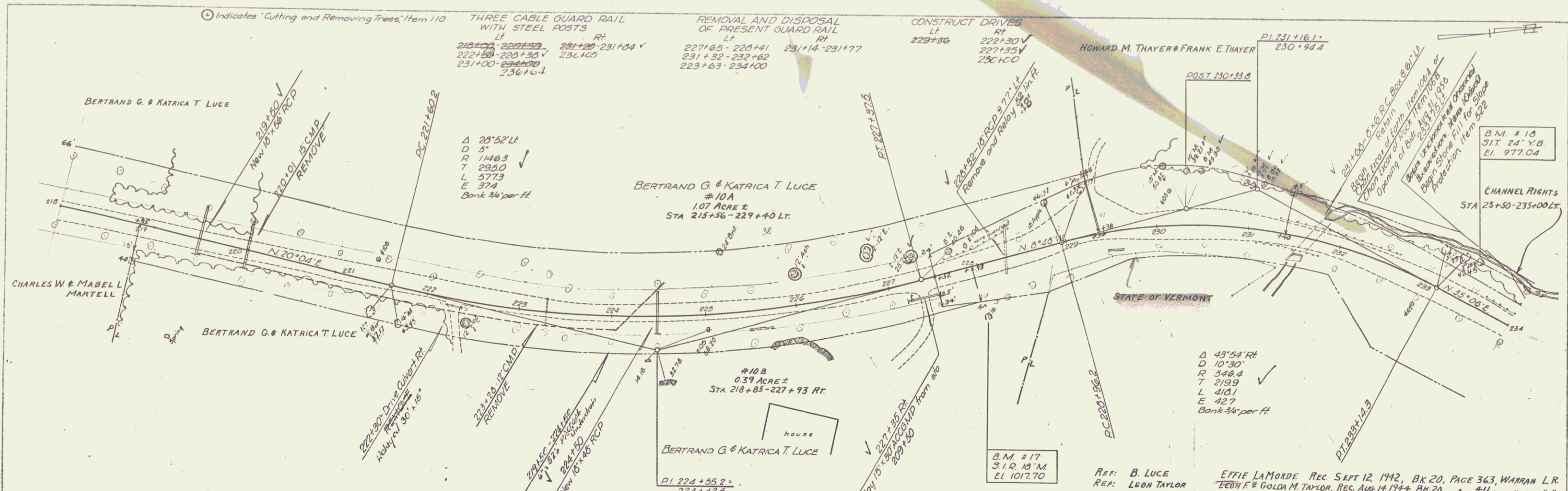


1076.5 1077.1 1078.0 1078.5 1074.5 1073.2 1071.3 1069.6 1068.3 1067.1 1066.0 1064.6 1062.8 1060.5 1058.3 1056.3 1054.0 1051.9 1050.1 1048.7 1047.7 1046.6 1046.4 1046.5 1047.4 1046.3 1049.8 1051.8 1050.8 1052.6 1051.6 1048.7 1047.2 1045.3 1041.6 1039.2

202 +50 203 +50 204 +50 205 +50 206 +50 207 +50 208 +50 209 +50 210 +50 211 +50 212 +50 213 +50 214 +50 215 +50 216 +50 217 +50 218

B.M. # 15 5' x 10' x 10' Elm 10' x 11' 3" 207+04 Ekv. 1066.69
 B.M. # 16 Conc. Barn Foundation 29' Rt. s/o 217+20 Elevation 1048.55

WARREN PROJ. 5120 157 (T) SHEET 10 OF 106



PLAN

DATE: 11-1-56

SCALE: 1"=40'

PROJECT: ROAD

TRACED

PROFILE

DATE: 11-1-56

SCALE: 1"=40'

PROJECT: ROAD

TRACED

PARCEL	INSTRUMENT	DATE	GRANTOR	GRANTEE	RECORDED	TOWN OF	BOOK	PAGE	DATE	REMARKS
11	W.D.O.E.	9-7-56	Howard M. Thayer & Frank E. Thayer	St of Vt	Warren	15	391-392	11-1-56	See also sheet 20	
11	Q.C.D.	9-7-56	Lewis D. Farwell & Dana L. Templeton	St of Vt	Warren	15	391-392	11-1-56	See also sheet 20	

B.M. # 17 S.I.R. 18 Maple 15' Rt. Sta. 227+97 Elevation 1017.70 B.M. # 16 S.I.T. 24 Y.B. 45' Lt. Sta. 233+41 Elevation 977.04

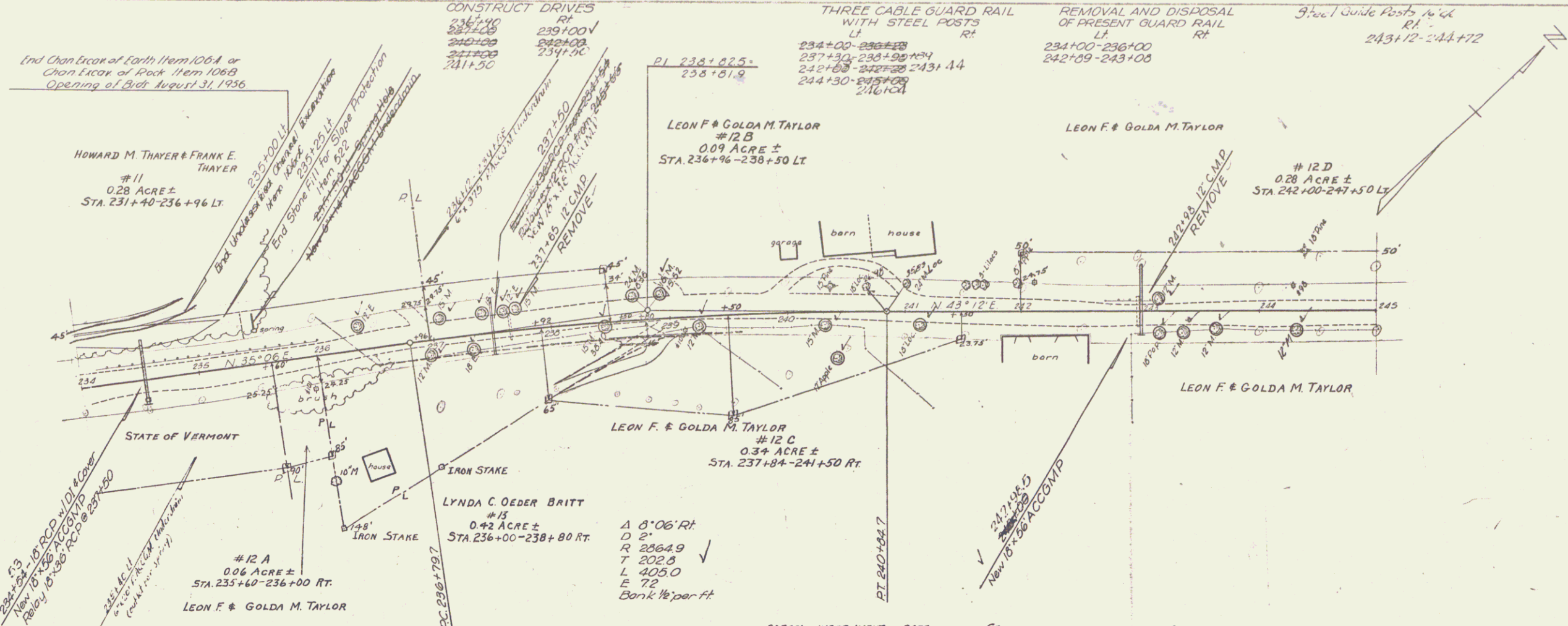
WARREN

PROJ. ST. NO. 157(17)

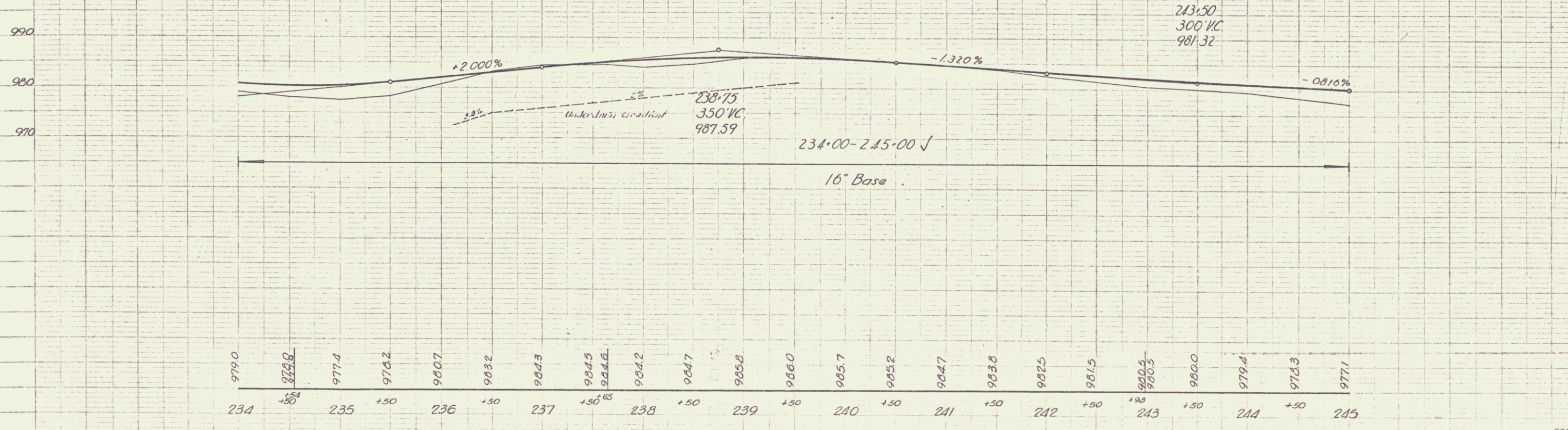
SHEET 19 OF 106

DATE	BY	REVISION
7-56	AVJ	REVISED
7-56	AVJ	REVISED
7-56	AVJ	REVISED

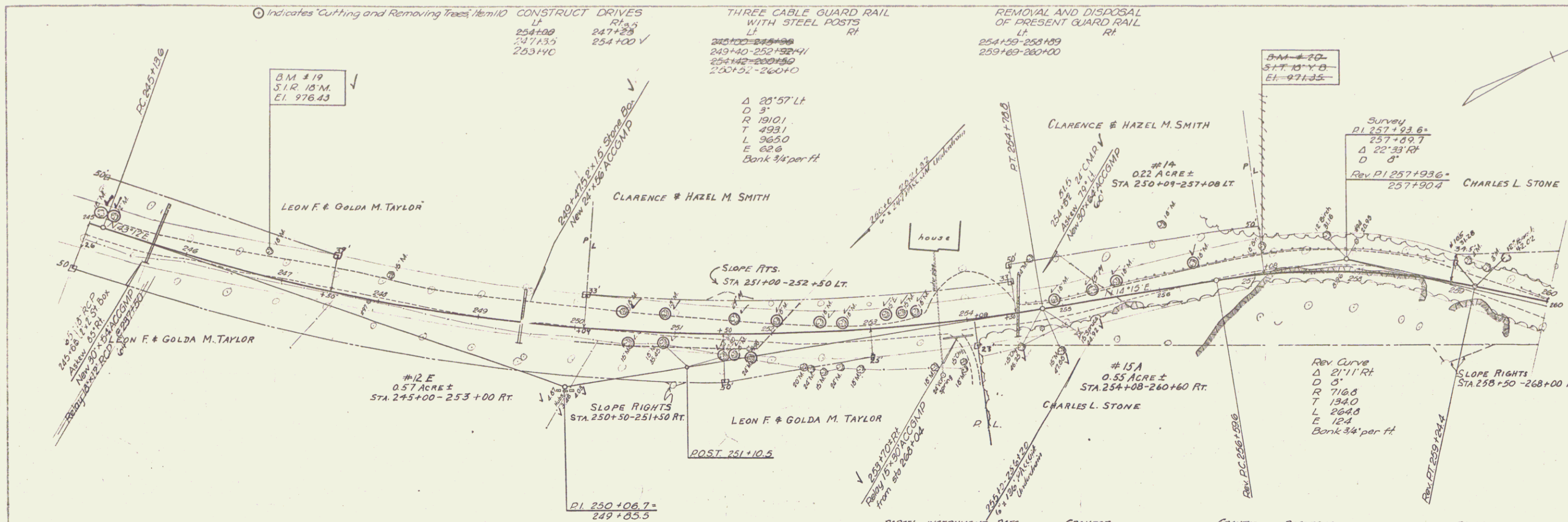
DATE	BY	REVISION
7-56	AVJ	REVISED
7-56	AVJ	REVISED
7-56	AVJ	REVISED



PARCEL	INSTRUMENT	DATE	GRANTOR	GRANTEE	RECORDED	TOWN OF	BOOK	PAGE	DATE	REMARKS
12A, B, C	W D O E	9-15-56	Leon F. & Golda M. Taylor	St. of Vt.	Warren	15	389-391	11-1-56		See also sheet 21
13	W D	6-8-56	Lynda C. Oeder Britt	St. of Vt.	Warren	15	373	9-9-56		

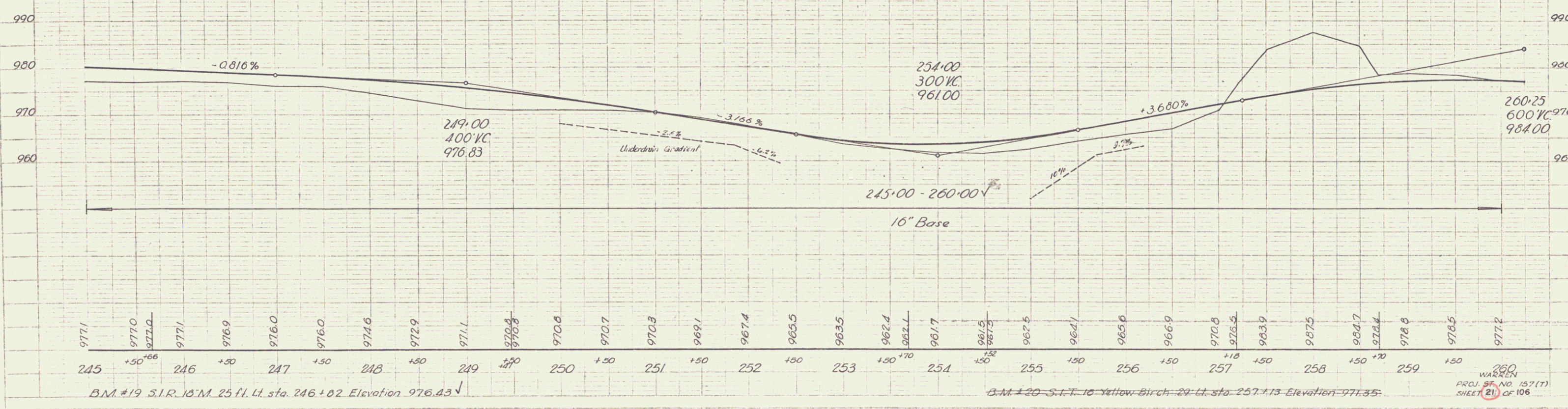


WARREN
 PROJ. NO. 157(T)
 SHEET 20 OF 106



PLAN
 DATE: 7-56
 DRAWN BY: [illegible]
 CHECKED BY: [illegible]
 SCALE: AS SHOWN
 SHEET NO. 21 OF 108

PARCEL	INSTRUMENT	DATE	GRANTOR	GRANTEE	RECORDED	TOWN OF	BOOK	PAGE	DATA	REMARKS
A	Cond	7-2-56	Clarence & Hazel M. Smith	St. of Vt.	Warren	15	367-372	7-6-56		
B, C, D	WDOE	9-12-56	Charles L. Stone	St. of Vt.	Warren	22	507-508	11-1-56		See also sheet 22



BM #19 S.I.R. 16'M. 25 ft. Lt. sta. 246+02 Elevation 976.43
 BM #20 S.I.T. 10 Yellow Birch 29' Lt. sta. 257+13 Elevation 971.35

WARREN
 PROJ. NO. 157(1)
 SHEET 21 OF 108

PLAN
REVISIONS
DATE
BY
CHECKED
DATE
BY
SCALE
PROJECT NO.
SHEET NO.

