

6014  
 Plymouth  
 6014

**INDEX OF SHEETS**

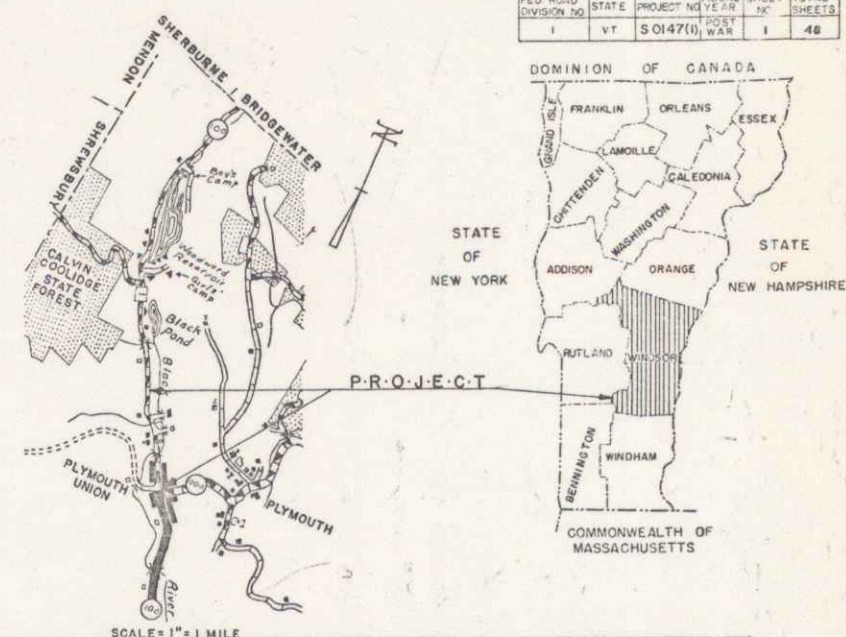
SHEET NO.	TITLE PAGE
1	TITLE PAGE
2	TYPICAL CROSS SECTION OF IMPROVEMENT (SINGLE TACK COAT OF REFINED TAR AND BLADE MIX)
3	STANDARD SHEET B-1 (BANKING)
4	QUANTITY SHEET (ITEMS)
5	QUANTITY SHEET (DRAINAGE)
6-7	EARTHWORK SHEETS
8-11	PLAN & PROFILE SHEETS
12	DETAILS OF ABUTMENTS "1" & "2" BRIDGE STA 314+28 - 315+12
13	REINFORCING STEEL SCHEDULE (BRIDGE STA 314+28 - 315+12)
14	SUPERSTRUCTURE DETAILS BRIDGE STA 329+07 - 329+37
15	DETAILS OF ABUTMENT "1"
16	DETAILS OF ABUTMENT "2"
17	BRIDGE STD. SHEET SIB-30 (H-20) MODIFIED 84' SPAN
18	BRIDGE STD. SHEET SB-5C-1 (TWO CABLE GUARD RAIL)
19	BRIDGE STD. SHEET SB-20-56, DETS A, B, C, D, E, F OR G.
20	STANDARD SHEET B-5 (TYPICAL SLOPE GRADING)
21	STANDARD SHEET B-6 (MUCK EXCAVATION)
22	STANDARD SHEET D-1 (P.R.C.P. DROP INLETS)
23	STANDARD SHEET D-2 (HEADWALLS & UNDERDRAIN)
24	STANDARD SHEET E-1 (BARRICADES, SIGNS, & LIGHTS)
25	STANDARD SHEET G-2 (TWO CABLE GUARD RAIL) and G-2b
26	STANDARD SHEET G-4 (GUIDE POSTS & MARKER POSTS)
27	STANDARD SHEET J-1 (MARKERS)
28-45	CROSS SECTIONS
46-48	CHANNEL SECTIONS

**STATE OF VERMONT**  
**DEPARTMENT OF HIGHWAYS**  
**PROPOSED IMPROVEMENT**  
**TOWN OF PLYMOUTH**  
**COUNTY OF WINDSOR**  
**LUDLOW - W. BRIDGEWATER ROAD**  
**VERMONT ROUTE 100**

FEDERAL AID SECONDARY PROJECT  
 BEGINNING AT THE INTERSECTION OF VT. ROUTES 100 & 100A IN THE HAMLET OF PLYMOUTH UNION AND EXTENDING NORTHERLY 1.021 MILES  
 LENGTH OF ROADWAY 5,275.8 FT. = 0.999 MILES  
 LENGTH OF BRIDGES 114.0 FT. = 0.022 MILES  
 LENGTH OF PROJECT 5,389.8 FT. = 1.021 MILES

BENCH MARKS ARE BASED UPON U.S.G.S. ELEVATIONS

1959 ADT	230
1980 ADT	340
1980 DHV	75
D	68%
T	6%
V	40



PROJECT NAME & NUMBER	TYPE PAVEMENT	AREA
PLYMOUTH S 0147(1) SA	SINGLE TACK COAT OF REFINED TAR & BLADE MIX FEA STONE SEAL W/CUTBACK ASPHALT.	12,905 SY

**RECORD PLANS**

**MATERIALS**

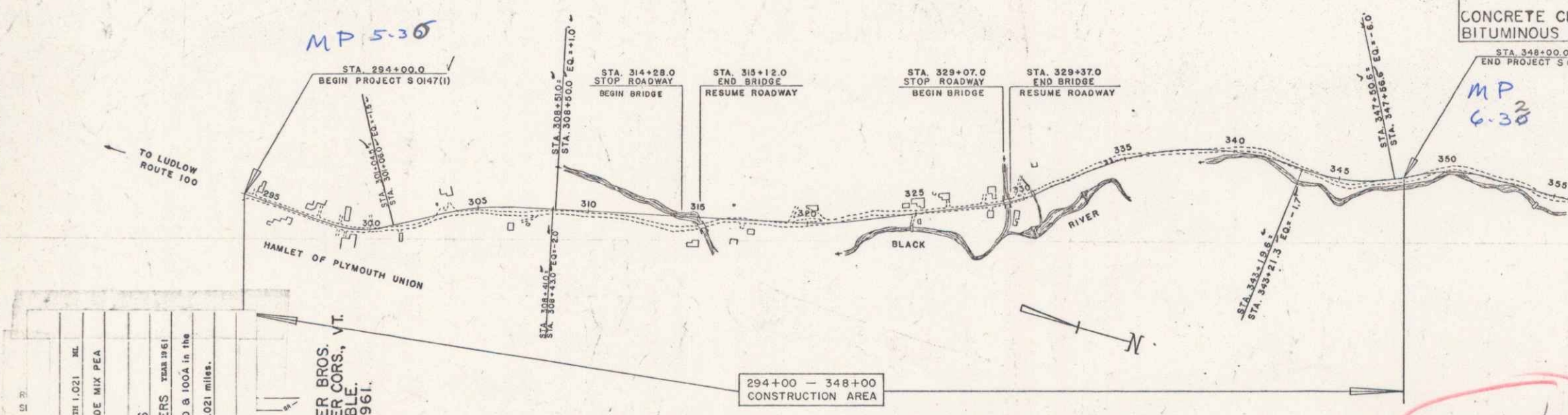
GRANULAR BORROW — MOORE PIT — PLYMOUTH, VERMONT.  
 SUBBASE OF GRAVEL & GRAVEL BACKFILL — MOORE PIT & BILLINGS PIT — PLYMOUTH, VERMONT.  
 REFINED TAR — OLD COLONY TAR CO. — WORCESTER, MASSACHUSETTS.  
 CUTBACK ASPHALT — MOBIL OIL CO. — PROVIDENCE, RHODE ISLAND.  
 PEA STONE — TWIN STATE SAND & GRAVEL CO. — W. LEBANON, NEW HAMPSHIRE.  
 REINF. CONG. PIPE, PREC. REINF. CONG. PIPE DROP INLETS W/COVERS & GRATES — VERMONT CONCRETE PIPE CO. — WINDSOR, VERMONT.  
 CONCRETE CLASS "B" — JOSEPH P. CARRARA — RUTLAND, VERMONT.  
 BITUMINOUS CONCRETE — ELACKTOP INC. — W. LEBANON, NEW HAMPSHIRE.  
 REINF. STEEL — VT. STRUCTURAL STEEL CO. — BURLINGTON, VT.  
 STRUCTURAL STEEL — A. LEO NASH STEEL CORR. — PITTSFIELD, MASS.  
 TREATED TIMBER PILING — KOPPERS CO. — CONCORD, N. H.  
 CABLE GUARD RAIL, WOOD GUIDE & MARKER POSTS — ST. GRISWOLD & CO. INC. — ESSEX JUNCTION, VERMONT.  
 CONTRACTORS — E. R. PUTNAM & SAILER BROTHERS — PLYMOUTH & BRIDGEWATER CORNERS, VT.  
 RESIDENT ENGINEER — EARL NEWTON | RECORD PLANS — E. NEWTON & F. WIMBLE.  
 INSPECTOR — G. REED.

**CONTRACT:**  
 DATED — JANUARY 12, 1961.  
 STARTED — JANUARY 16, 1961.  
 COMPLETED — OCTOBER 17, 1961.  
 ACCEPTED — OCTOBER 17, 1961.

RIGHT-OF-WAY DIVISION  
 TOWN FILE  
 PERPETUAL  
 4100  
 (To Be Returned To R.O.W. Division)

NOTE: ANY FURTHER INFORMATION CONCERNING FINAL QUANTITIES, AMOUNTS OR OTHER DETAILS RELATIVE TO THIS PROJECT MAY BE FOUND IN EITHER THE FIELD BOOKS OR THE ESTIMATE FILE.

DATE: 09/29/1960  
 P.N. 00R615



PLYMOUTH  
 PROJECT S 0147(1) SA  
 SINGLE TACK COAT OF REFINED TAR & BLADE MIX FEA STONE SEAL WITH CUTBACK ASPHALT.  
 CONTRACTORS: E. R. PUTNAM & SAILER BROTHERS  
 PLYMOUTH & BRIDGEWATER CORNERS, VT.  
 Location Beginning at the intersection of Vt. Routes 100 & 100A in the Hamlet of Plymouth Union and extending northerly 1.021 miles.

PLYMOUTH - S 0147(1) SA  
 CONTRACTORS: E. R. PUTNAM & SAILER BROS., PLYMOUTH & BRIDGEWATER CORNERS, VT.  
 CONST. COMPLETED - OCTOBER 17, 1961.  
 RECORD PLANS - E. NEWTON & F. WIMBLE.

**SCALES**

TITLE	1" = 300'
TYPICAL	1" = 2'
PLAN	1" = 50'
PROFILE	HORIZONTAL 1" = 50'
	VERTICAL 1" = 10'
CROSS-SECTIONS	1" = 5'

APPROVED: <i>[Signature]</i> DATE: Nov 29, 1960 SECONDARY ENGINEER	APPROVED: <i>[Signature]</i> DATE: Nov 29, 1960 CONSTRUCTION ENGINEER	APPROVED: <i>[Signature]</i> DATE: Nov 29, 1960 BRIDGE ENGINEER	APPROVED: <i>[Signature]</i> DATE: Nov 29, 1960 DISTRICT ENGINEER	APPROVED: <i>[Signature]</i> DATE: Nov 29, 1960 ALDER ENGINEER	APPROVED: <i>[Signature]</i> DATE: Nov 29, 1960 CHIEF ENGINEER
--	---	---	---	--	--

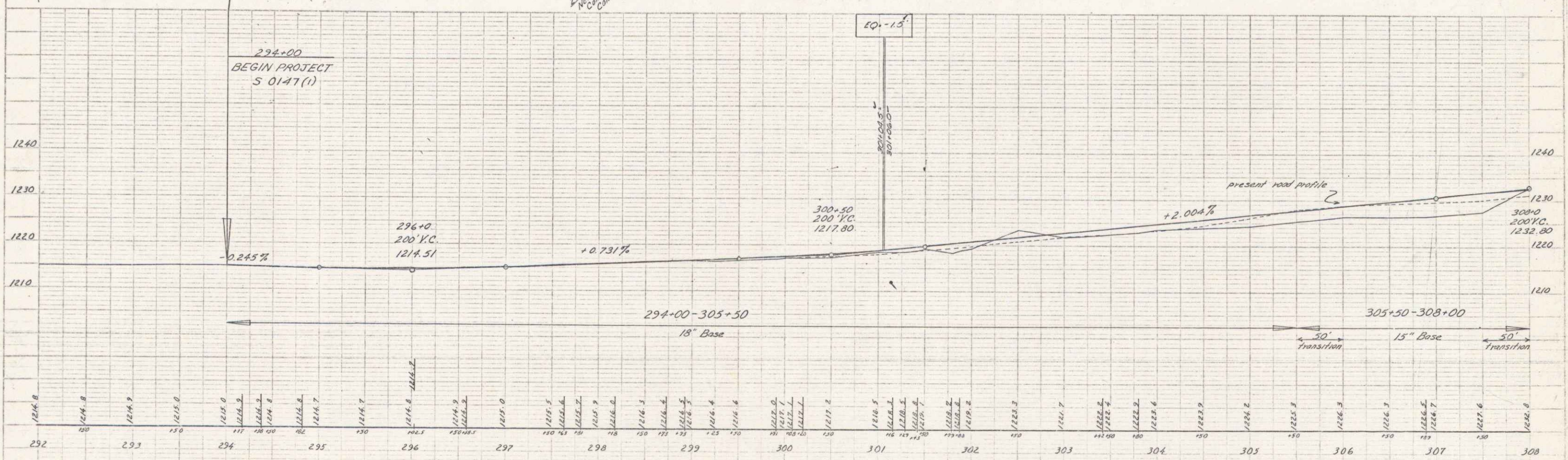
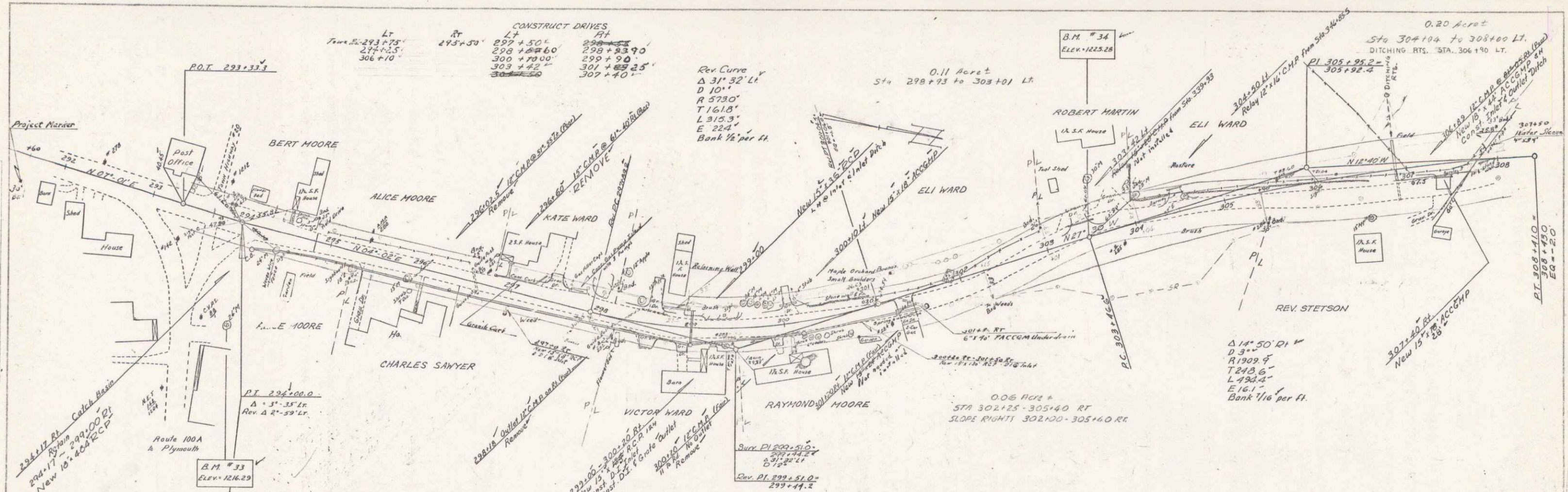
DEPARTMENT OF COMMERCE  
 BUREAU OF PUBLIC ROADS

APPROVED: \_\_\_\_\_ DATE: \_\_\_\_\_  
 DIVISION ENGINEER

PROJECT S NO. 0147(1) SA  
 SHEET 1 OF SHEETS 48

PLAN  
 DATE: 10/15/54  
 DRAWN BY: H. B. BROWN  
 CHECKED BY: H. B. BROWN  
 SCALE: AS SHOWN

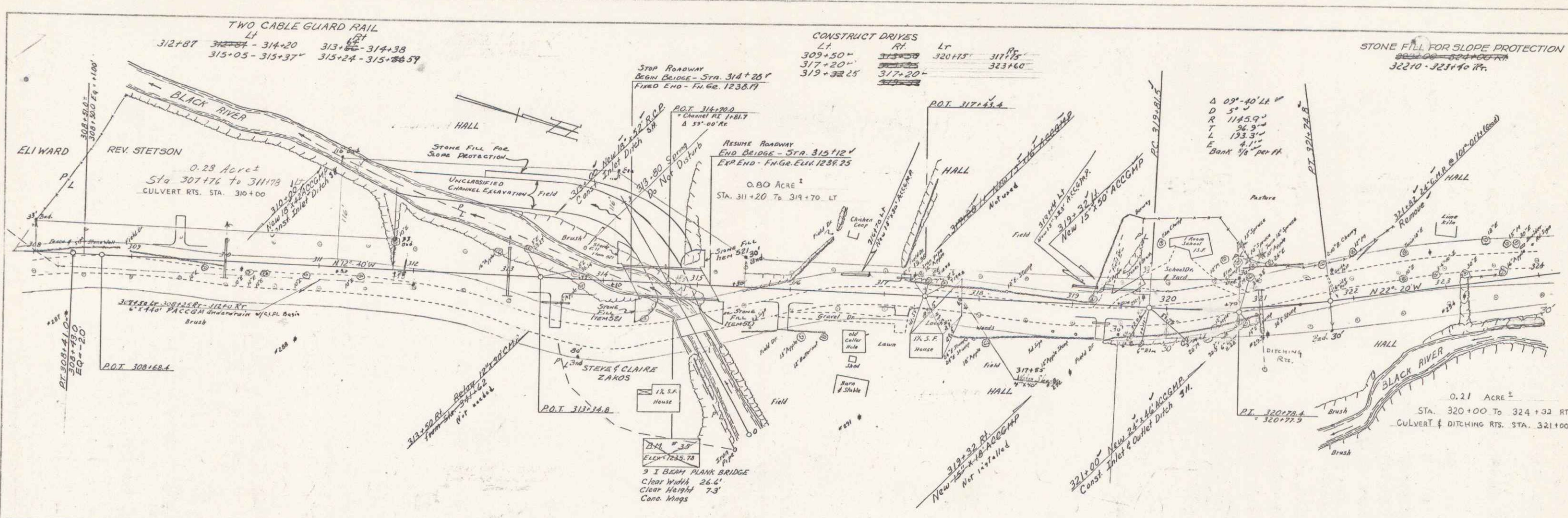
PROFILE  
 DATE: 10/15/54  
 DRAWN BY: H. B. BROWN  
 CHECKED BY: H. B. BROWN  
 SCALE: AS SHOWN



PLYMOUTH  
 Project S No. 0147 (1) SA  
 Sheet 8 of 18 Sheets

PLAN  
 DATE  
 BY  
 CHECKED  
 APPROVED

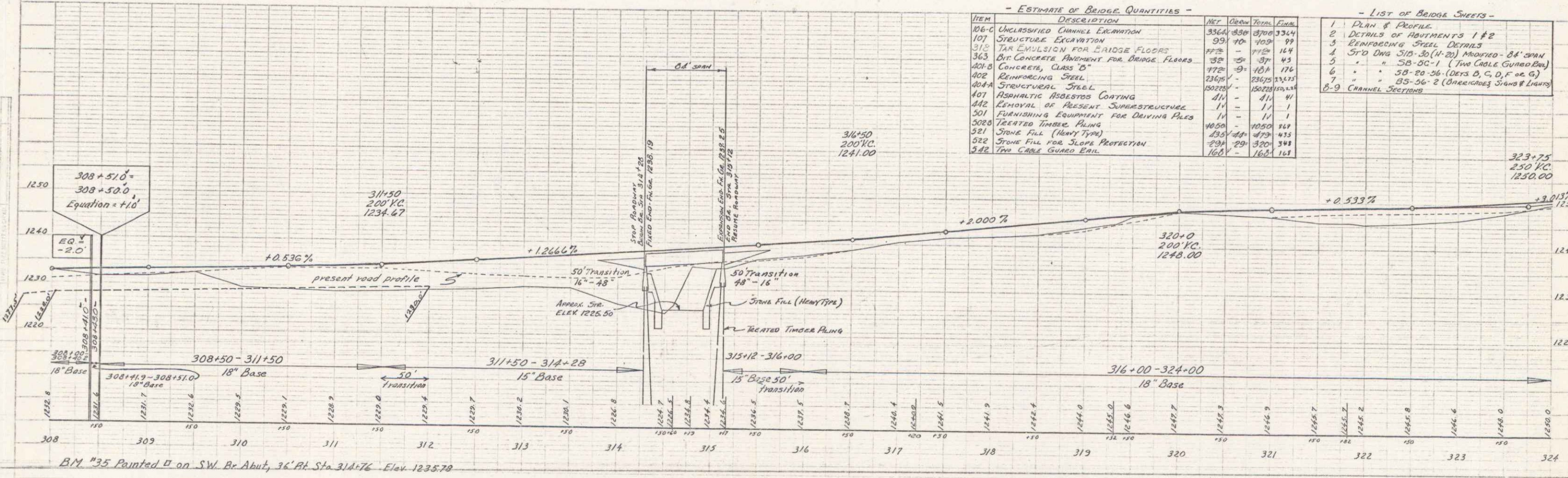
B. S. ...  
 ...  
 ...

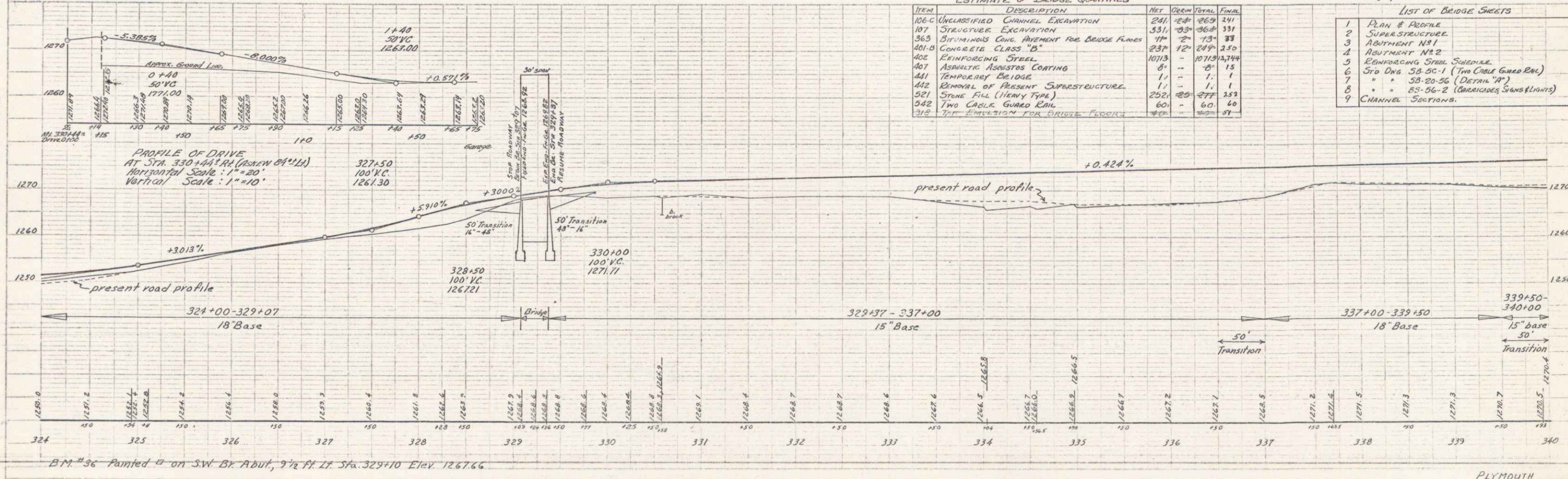
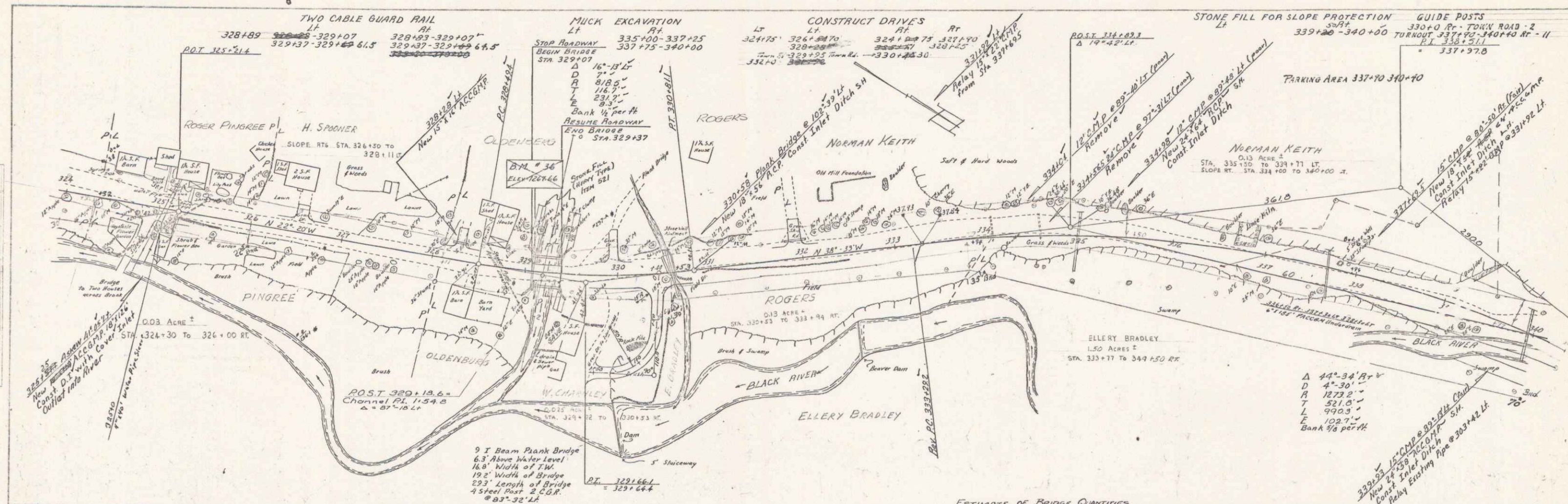


- ESTIMATE OF BRIDGE QUANTITIES -

ITEM	DESCRIPTION	NET	ORIG	FORM	FINISH
106-C	UNCLASSIFIED CHANNEL EXCAVATION	3364	830	3700	3364
107	STRUCTURE EXCAVATION	39	99	100	99
312	TAR EMULSION FOR BRIDGE FLOORS	172	172	164	164
363	BIT CONCRETE FURNISHING FOR BRIDGE FLOORS	32	32	37	43
401-B	CONCRETE, CLASS "B"	772	10	10	176
402	REINFORCING STEEL	2269	1	2309	2269
404-A	STRUCTURAL STEEL	10222	1	10222	10222
407	ASPHALTIC ASBESTOS COATING	11	1	11	11
412	REMOVAL OF PRESENT SUPERSTRUCTURE	1	1	1	1
501	FURNISHING EQUIPMENT FOR DRIVING PILES	1	1	1	1
502	TREATED TIMBER PILING	1050	1	1050	1050
521	STONE FILL (HEAVY TYPE)	434	29	479	435
522	STONE FILL FOR SLOPE PROTECTION	294	29	320	341
523	TWO CABLE GUARD RAIL	168	1	168	168

- LIST OF BRIDGE SHEETS -
- 1 PLAN & PROFILE
  - 2 DETAILS OF ABUTMENTS 1 & 2
  - 3 REINFORCING STEEL DETAILS
  - 4 STD DWG 312-25(1-20) MODIFIED - 84' SPAN
  - 5 " " 32-20-1 (TWO CABLE GUARD RAIL)
  - 6 " " 32-20-26 (DETA B, C, D, F OR G)
  - 7 " " 32-56-2 (SHEARKEYS STANDS & LIGHTS)
  - 8-9 CHANNEL SECTIONS





ESTIMATE OF BRIDGE QUANTITIES

ITEM	DESCRIPTION	NET	QUAN	TOTAL	UNIT
106-C	UNCLASSIFIED CHANNEL EXCAVATION	241	104	269	241
107	STRUCTURE EXCAVATION	331	23	364	331
363	BIRMINGHAM CONC. PAVEMENT FOR BRIDGE FLOORS	77	2	79	33
401-B	CONCRETE CLASS "B"	237	12	249	250
402	REINFORCING STEEL	1073	-	1073	3744
407	ASPHALTIC AGGREGATE COATING	8	-	8	18
441	TEMPORARY BRIDGE	1	-	1	1
442	REMOVAL OF PRESENT SUPERSTRUCTURE	1	-	1	1
501	STONE FILL (HEAVY TYPE)	252	60	277	323
542	TWO CABLE GUARD RAIL	60	-	60	60
312	TRIP EXCAVATION FOR BRIDGE FLOORS	77	-	77	77

- LIST OF BRIDGE SHEETS
- 1 PLAN & PROFILE
  - 2 SUPERSTRUCTURE
  - 3 ABUTMENT NO. 1
  - 4 ABUTMENT NO. 2
  - 5 ENFORCING STEEL SCHEDULE
  - 6 STD DWG. 58-55-1 (TWO CABLE GUARD RAIL)
  - 7 " " 58-55-56 (DETAIL "A")
  - 8 " " 58-56-2 (CHANNEL SECTIONS)
  - 9 CHANNEL SECTIONS

PLAN  
 PROJECT NO. 0147(1) SA  
 SHEET NO. 10 OF 48 SHEETS  
 DATE: MAY 1954  
 DRAWN BY: H. BRADLEY  
 CHECKED BY: H. BRADLEY

PROFILE  
 PROJECT NO. 0147(1) SA  
 SHEET NO. 10 OF 48 SHEETS  
 DATE: MAY 1954  
 DRAWN BY: H. BRADLEY  
 CHECKED BY: H. BRADLEY

