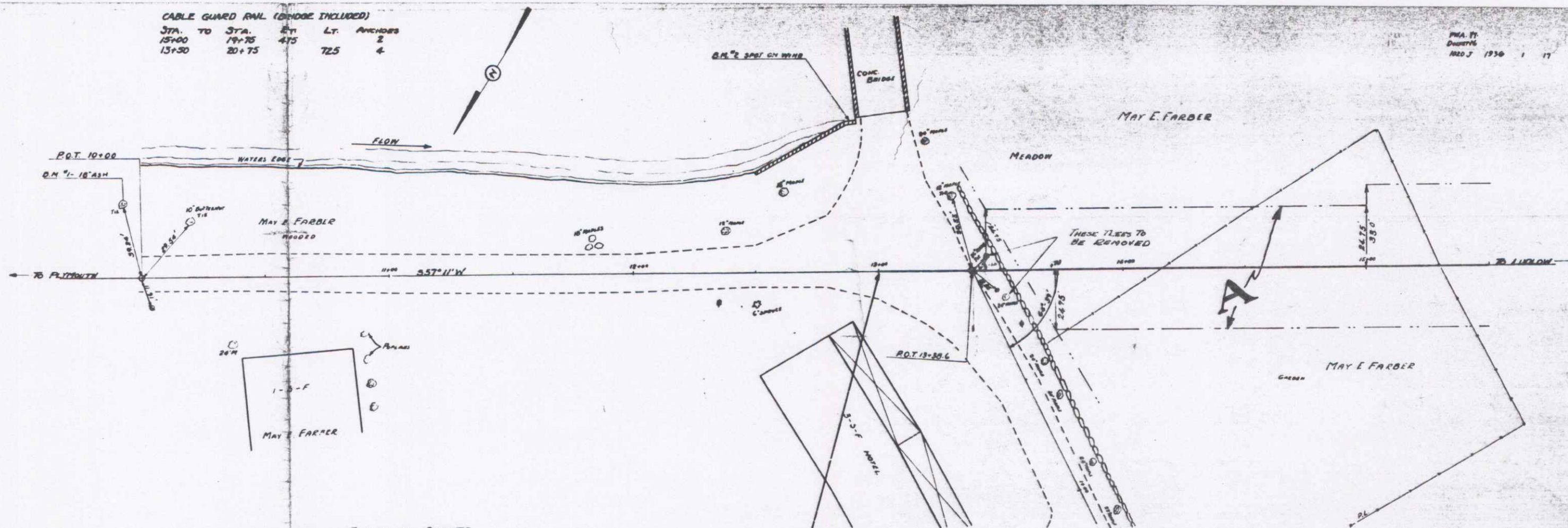


CABLE GUARD RAIL (BRIDGE INCLUDED)

STA.	TO	STA.	BY	LT.	ANCHORS
15+00		19+75	475		2
15+30		20+75		725	4

PWA. 17
DUSTY
NOV 7 1936



BRIDGE DATA

	PRESENT	PROPOSED
TYPE	2 BEAM	7 BEAM
SPAN	10'	40'
CLEAR HEIGHT	8'	7'
WIDTH	13'-0"	20'-0"
LENGTH	24'	45'
ROADWAY WIDTH	14'-5"	30'

INDEX OF SHEETS

SHEET NO.	NO.	DESCRIPTION
1-2	PLAN AND PROFILE	
3	TYPICAL CROSS SECTION OF IMPROVEMENT (NO. 1)	
4	SERIES 37B 20 NO. 25-40 (40' SPAN) PROPOSED FLOOR SLAB 8" THICK THROUGH BRIDGE 5" PER FOOT-15' SPAN	
5	DETAILS - ABOUT NO. 1	
6	DETAILS - ABOUT NO. 2	
7	SERIES 30 70 - TYPICAL DETAILS DETAILS 3102, 3103, 3105, 3110, 3112, INTERNAL NOTES	
8	SERIES 30 5A - CABLE RAIL	
9	SERIES 30 11 - BARRICADES, LIGHTS AND DETOURS	
10	SERIES 3 NO. 30 - STANDARD STRUCTURES	
11-17	CROSS SECTIONS	

NOTE: PAYMENT FOR REMOVAL AND DISPOSAL OF TREES TO BE INCLUDED IN THE UNIT PRICE BID FOR CONN. EXCAV. INCL. DOZEY. TREES SHALL BE DISPOSED OF AS PER SPECIFICATIONS OR AS DIRECTED BY THE ENGINEER IN THE FIELD.

ESTIMATED QUANTITIES

10-11 COMMON EXCAV. INCL. BORROW	8841 CU. YDS.
12 SUBBASE OF GRAVEL	250 CU. YDS.
14 CHANNEL EXCAVATION	30 CU. YDS.
15 STRUCTURE EXCAVATION	74 CU. YDS.
20 CHANNEL SURFACE COURSE	147 CU. YDS.
23A CONCRETE CLASS A	81 CU. YDS.
23C CONCRETE CLASS C	81 CU. YDS.
24 REINFORCED STEEL	10469 LBS.
62 RIPRAP FOR BANK PROTECTION	75 CU. YDS.
67A CABLE GUARD RAIL	124 LBS.
67B ANCHORS FOR CABLE GUARD RAIL	6 EACH

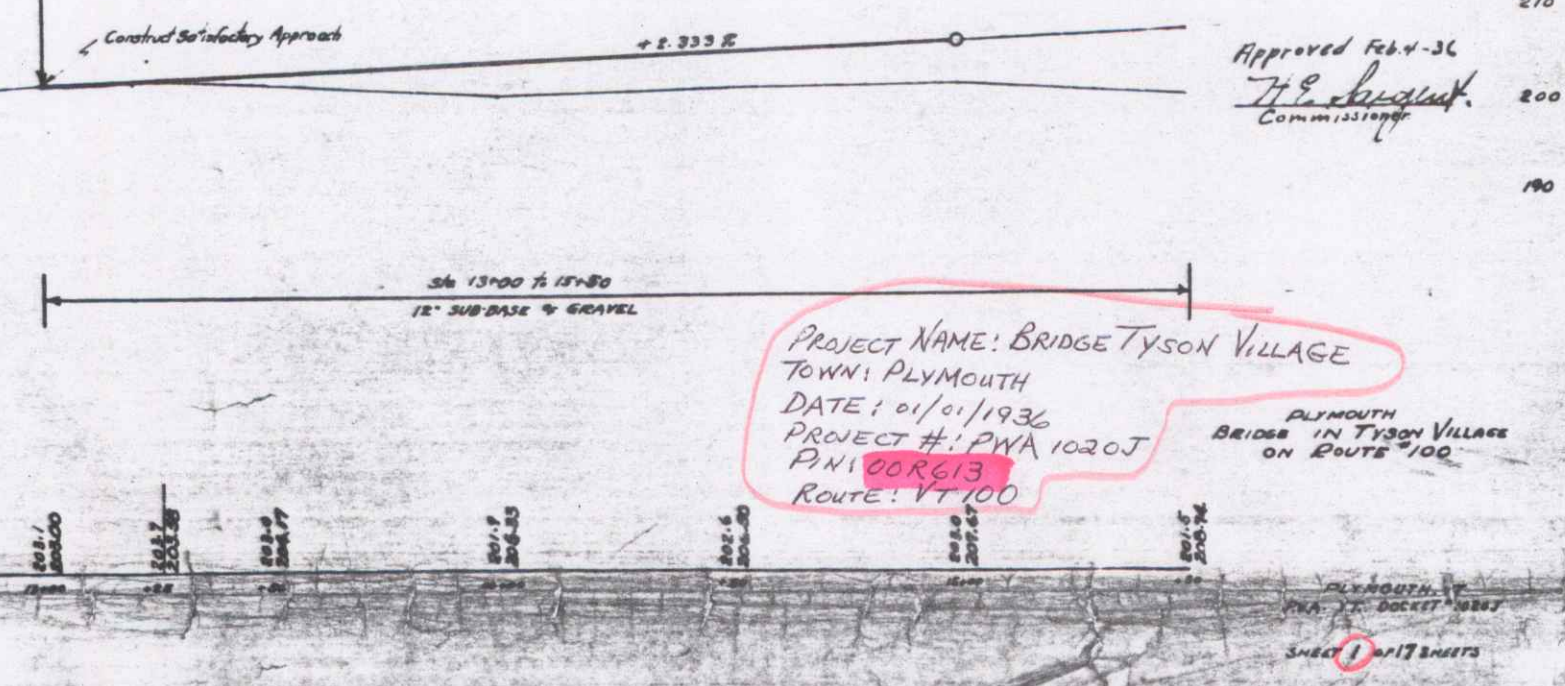
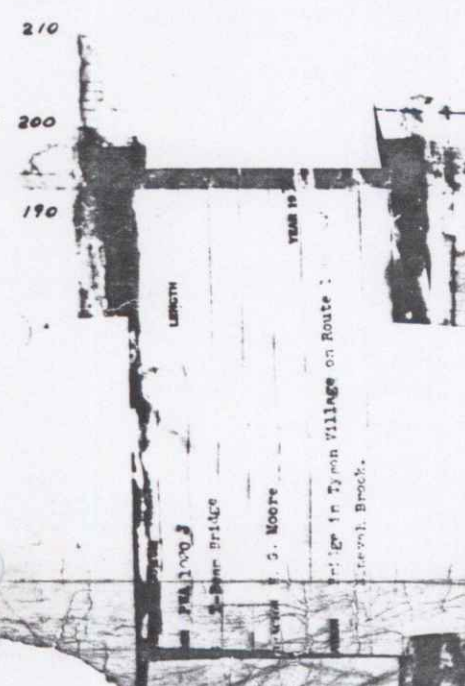
M.P.O. 15
BEGIN PROJECT
JUN 1936
M.P.O. 147 ±

PARCEL KIND OF DATE OF GRANTOR GRANTEE RECORDED PLANNED

A N.D. 8526 MAY E. FARBER STAFF: 24 35-56 82336

APPROVED
1936

Approved Feb. 4-36
W. P. [Signature]
Commissioner



PROJECT NAME: BRIDGE TYSON VILLAGE
TOWN: PLYMOUTH
DATE: 01/01/1936
PROJECT #: PWA 1020J
P.N. 80613
ROUTE: VT 100

PLYMOUTH
BRIDGE IN TYSON VILLAGE
ON ROUTE 100

PLYMOUTH
PWA. 17
NOV 7 1936

DETAILS OF NEW BRIDGE
 Type - 7 Box 15' Spans with 95' Over-Run Floor
 Clear Span - 90'
 - Rely - 20' Light Open - 45'
 - Height - 7' Netway - 200 Sq Ft

P.V.A.
 10763 1976 2 17

CONSTRUCT SATISFACTORY APPROACH
 AND BY FIELD OR LEFT BY 3RD STAKE

