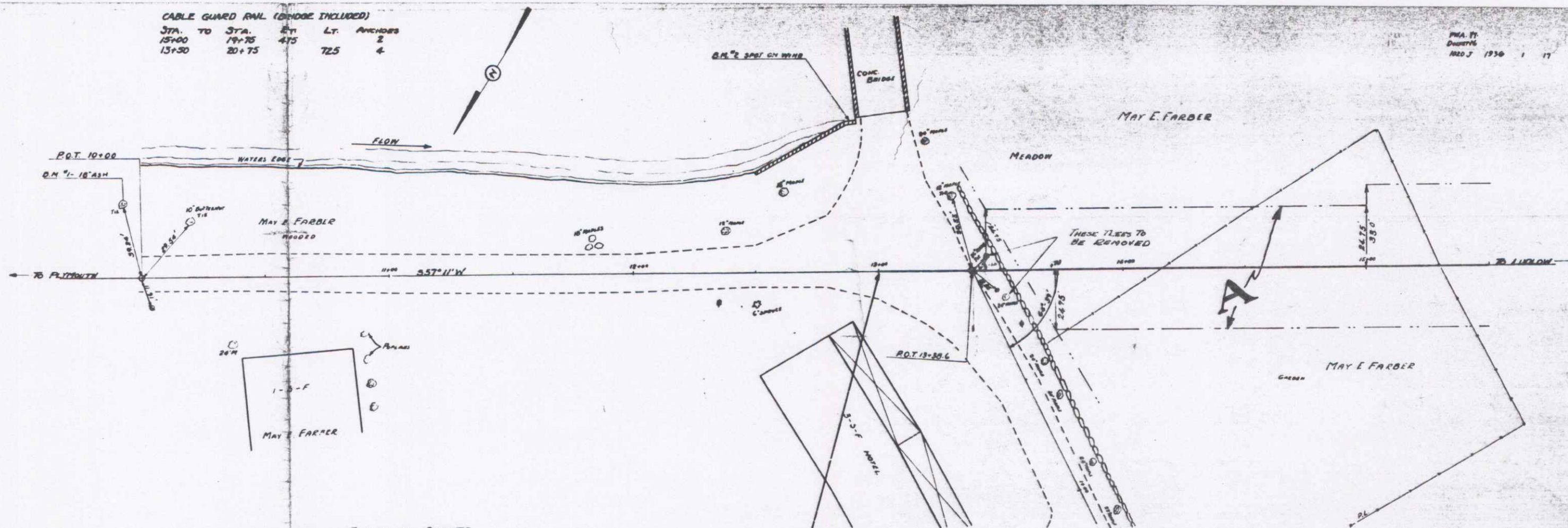


CABLE GUARD RAIL (BRIDGE INCLUDED)

STA.	TO	STA.	BY	LT.	ANCHORS
15+00		19+75	475		2
15+30		20+75		725	4

PWA. 17  
DUSTY  
NOV 7 1936



BRIDGE DATA

	PRESENT	PROPOSED
TYPE	2 BEAM	7 BEAM
SPAN	8'	40'
CLEAR HEIGHT	8'	7'
WIDTH	13'-0"	20'-0"
LENGTH	24'	45'
ROADWAY WIDTH	14'-5"	30'

INDEX OF SHEETS

SHEET NO.	NO.	DESCRIPTION
1-2	PLAN AND PROFILE	
3	TYPICAL CROSS SECTION OF IMPROVEMENT (NO. 1)	
4	SERIES 37B 20 NO. 25-40 (40' SPAN) PROPOSED FLOOR SLAB 8" THICK THROUGH BRIDGE 5" PER FOOT-15' SPAN	
5	DETAILS - ABOUT NO. 1	
6	DETAILS - ABOUT NO. 2	
7	SERIES 30 70 - TYPICAL DETAILS DETAILS 3102, 3103, 3105, 3110, 3112, INTERNAL NOTES	
8	SERIES 30 5A - CABLE RAIL	
9	SERIES 30 11 - BARRICADES, LIGHTS AND DETOURS	
10	SERIES 3 NO. 30 - STANDARD STRUCTURES	
11-17	CROSS SECTIONS	

NOTE: PAYMENT FOR REMOVAL AND DISPOSAL OF TREES TO BE INCLUDED IN THE UNIT PRICE BID FOR CONN. EXCAV. INCL. DOZEY. TREES SHALL BE DISPOSED OF AS PER SPECIFICATIONS OR AS DIRECTED BY THE ENGINEER IN THE FIELD.

ESTIMATED QUANTITIES

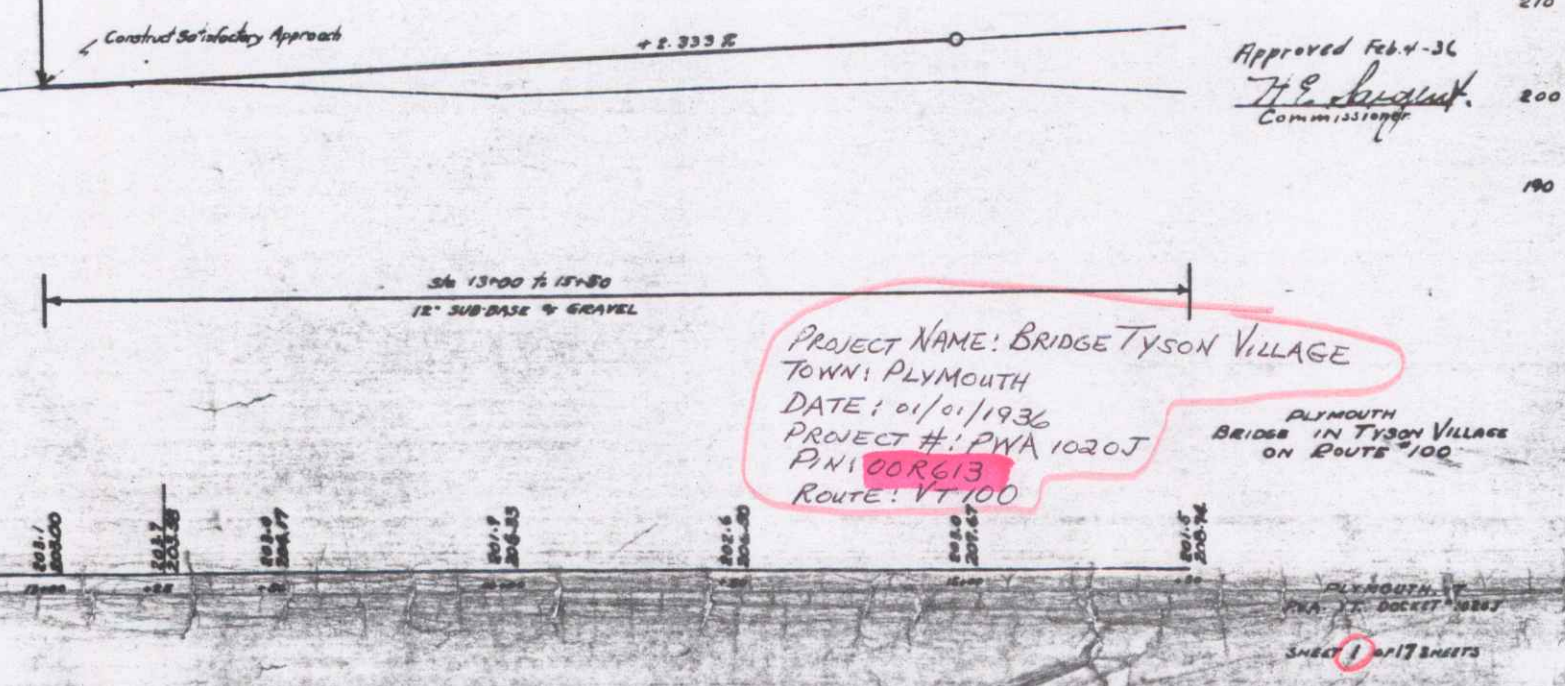
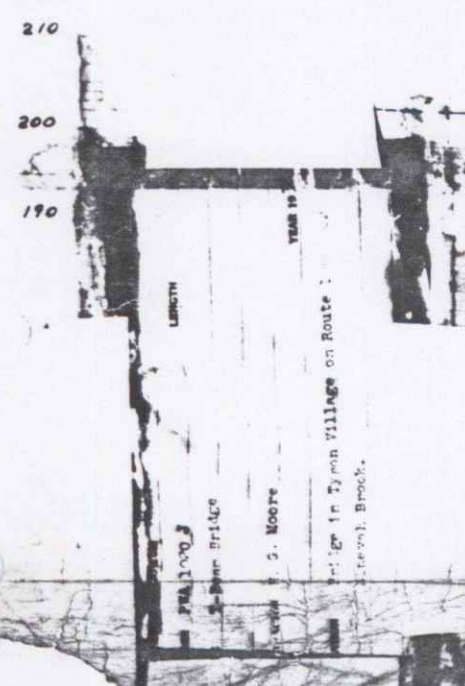
10-11 COMMON EXCAV. INCL. BORROW	8841 CU. YDS.
12 SUBBASE OF GRAVEL	250 CU. YDS.
14 CHANNEL EXCAVATION	30 CU. YDS.
15 STRUCTURE EXCAVATION	74 CU. YDS.
20 CHANNEL SURFACE COURSE	147 CU. YDS.
23A CONCRETE CLASS A	81 CU. YDS.
23C CONCRETE CLASS C	81 CU. YDS.
24 REINFORCED STEEL	10469 LBS.
62 RIPRAP FOR BANK PROTECTION	75 CU. YDS.
67A CABLE GUARD RAIL	124 LBS.
67B ANCHORS FOR CABLE GUARD RAIL	6 EACH

M.P.O. 15  
BEGIN PROJECT  
JUN 1936  
M.P.O. 147 ±

PARCEL KIND OF DATE OF GRANTOR GRANTEE RECORDED PLANNING

A N.D. 8526 MAY E. FARBER Spot: 24 35-56 82336

Approved Feb. 4-36  
W. P. [Signature]  
Commissioner



PROJECT NAME: BRIDGE TYSON VILLAGE  
TOWN: PLYMOUTH  
DATE: 01/01/1936  
PROJECT #: PWA 1020J  
P.N. 60613  
ROUTE: VT 100

PLYMOUTH  
BRIDGE IN TYSON VILLAGE  
ON ROUTE 100

PLYMOUTH  
PWA. 17. DOCKET 1020J  
SHEET 1 OF 17 SHEETS