

CONSTRUCT DRIVE
 Lt Rt
 92+50 96+50
 7'±-80

JUTE MATTING
 Rt
 88+50 - 96+00

CONSTRUCT BERM DITCH
 Lt Rt Ham 103-A-1
 88+50-96+00

CONSTRUCT APPROACH
 Lt Rt
 85+50-87+50 85+50-86+80

CONSTRUCT SPECIAL DITCH
 Lt Rt Ham 103-A-1
 87+10-88+50

TWO CABLE GUARD RAIL
 Lt Rt
 88+50-89+00 89+00-89+48
 83+00-91+48
 72'-75' 76'

Wood Guide Posts
 87+20 - 88+10 11'-0"

NOTE: all drives are to be constructed with a 12'± minimum width and a 20'± minimum flare radius.

Sta. 85+50.0'
 PROJECT S-0145(1)1961 ENDS BEGIN PROJECT S-0145(5)S.A.
 Construct Satisfactory Approach

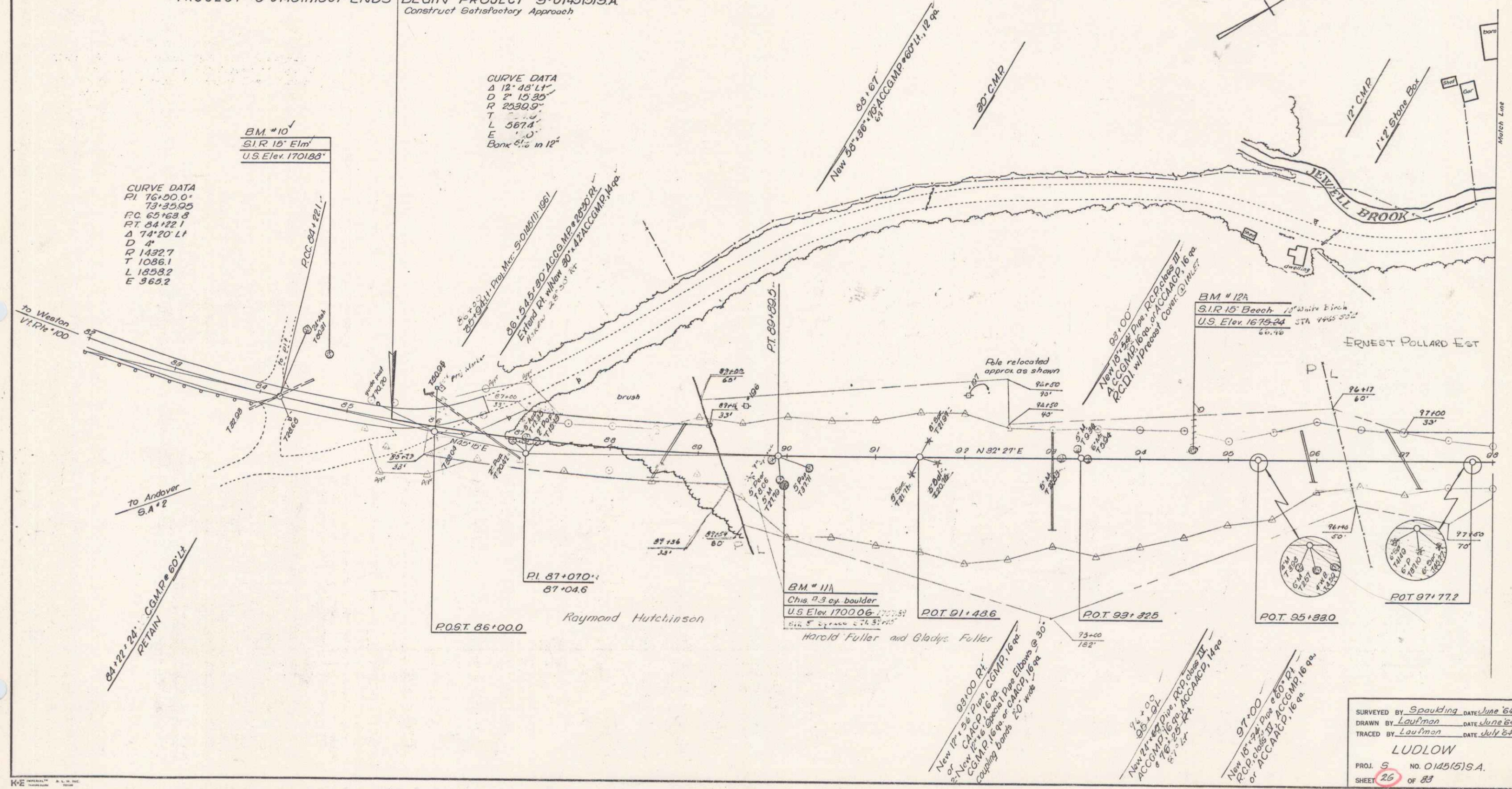
CURVE DATA
 Δ 12°-48'14"
 D 2' 15.30"
 R 2330.0'
 T 567.4'
 L 0'
 E 365.2'
 Bank 5% in 12'

CURVE DATA
 PI 76+50.0'
 73+50.00
 PC 65+68.8
 PT 84+22.1
 Δ 74°-20' Lt
 D 4'
 R 1432.7
 T 1086.1
 L 1858.2
 E 365.2

BM #10
 S/R 15' Elm
 U.S. Elev. 1701.88'

BM #12A
 S/R 15' Beech 12" square 8 inch
 U.S. Elev. 1675.24'
 STA 4465 5532
 61.70'

BM #11A
 Chis. 23 ex. boulder
 U.S. Elev. 1700.06'
 61.2' ± distance to Sta 87+00



SURVEYED BY Spaulding DATE June 64
 DRAWN BY Laupman DATE June 64
 TRACED BY Laupman DATE July 64
 LUDLOW
 PROJ S NO. 0145(5)S.A.
 SHEET 26 OF 83