

INDEX OF SHEETS

SHEET NO.	1	TITLE PAGE
	2	TYPICAL CROSS-SECTION OF IMPROVEMENT (SINGLE TACK COAT OF REFINED TAR AND BLADE MIX / PEA STONE SEAL WITH CUTBACK ASPHALT, ITEM 317)
	3	QUANTITY SHEET (ITEMS)
	4	ITEM AND DRAINAGE SHEET
	5-6	EARTHWORK SHEETS
	7	STANDARD SHEET B-1 (BANKING TABLES)
	8	" " B-5 (SLOPE GRADING)
	9	" " D-1 (PREC. RCP DROP INLET W/COVER)
	10	" " D-2 (UNDERDRAIN & CRIM)
	11	" " E-1 (FABRICATED SIGNS, LIGHTS)
	12	" " G-2 (TWO CABLE GUARD RAIL)
	13	" " G-4 (MARKERS AND GUIDE POSTS)
	14	" " J-1 (PROJECT MARKERS, BOUNDARY MARKERS)
	15-20	PLAN AND PROFILE SHEETS
	21-56	CROSS SECTIONS

PROJECT NAME & NUMBER		TYPE	PAVEMENT	AREA
LUDLOW S-0145(1)		SINGLE TACK COAT OF REFINED TAR & BLADE MIX	MIX PEA STONE SEAL W/ CUTBACK ASPHALT	18,222 S.Y.
RECORD PLANS				
MATERIALS				
SUB-BASE OF GRAVEL, SUB-BASE OF SAND & GRAVEL BACKFILL - MASSEY PIT - LUDLOW, VT.				
REFINED TAR - OLD COLONY TAR CO. - WORCESTER, MASS.				
CUTBACK ASPHALT - MOBIL OIL CO. - E. PROVIDENCE, R.I.				
PEA STONE & STONE RUBBLE - VERMONT MARBLE CO. - W. RUTLAND, VT.				
REINFORCED CONCRETE PIPE - VT. CONCRETE PIPE CO. - WINDSOR, VT.				
ASPH. CTD. CORR. GALV. METAL PIPE & UNDERDRAIN - NEW ENGLAND METAL PIPE CO. - WHITE RIVER JCT., VT.				
TWO CABLE GUARD RAIL, WOOD MARKER & GUIDE POSTS - S.T. GRISWOLD CO. INC. - ESSEX JCT., VT.				
SEED & FERTILIZER - LUDLOW SEEDS & SUPPLY CO. - LUDLOW, VT.				
MULCH - EARL COLBY & ROBERT BRIDGE - BRIDGEWATER, VT.				
CONTRACTOR - EDWIN R. PUTNAM		CONTRACT DATED - JULY 12, 1960.		
BRIDGEWATER CORP., VT.		STARTED - JULY 12, 1960.		
RESIDENT ENG. - PAUL D. HURLEY		COMPLETED - AUG. 16, 1961.		
RECORD PLANS - PAUL D. HURLEY		ACCEPTED - AUG. 16, 1961.		

STATE OF VERMONT
DEPARTMENT OF HIGHWAYS

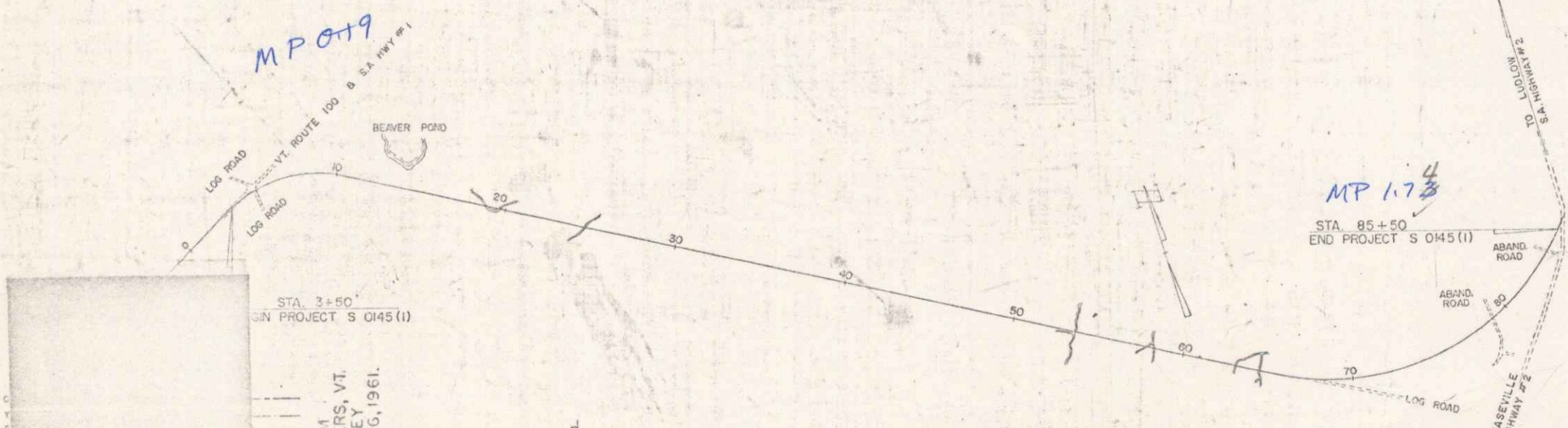
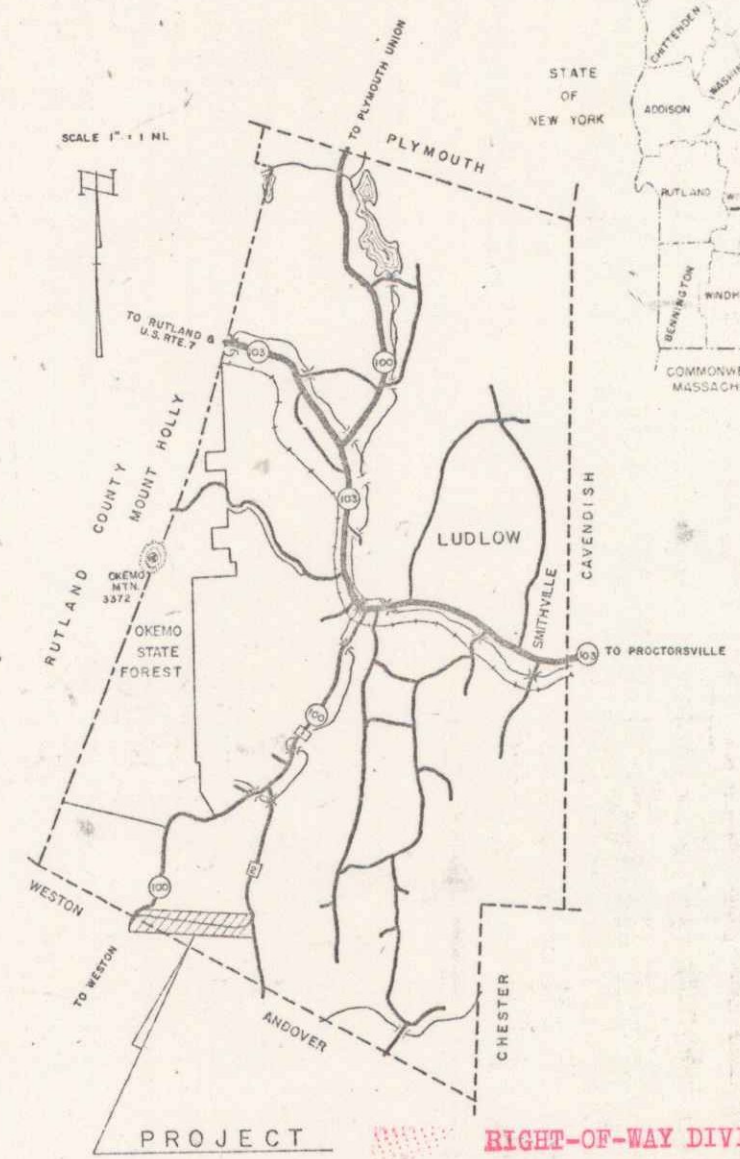
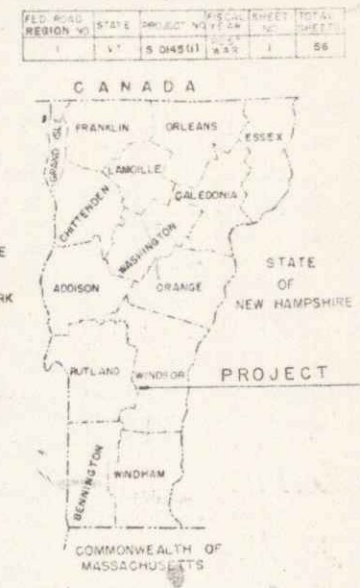
PROPOSED IMPROVEMENT
FEDERAL AID SECONDARY PROJECT

TOWN OF LUDLOW
COUNTY OF WINDSOR
VERMONT ROUTE 100
LUDLOW-WESTON ROAD

BEGINNING A POINT APPROXIMATELY 1056 FEET NORTHERLY FROM THE ANDOVER-LUDLOW TOWN LINE AND EXTENDING EASTERLY 8200 FEET.
LENGTH OF PROJECT 8200 FEET = 1.553 MILES

DESIGN SPEED = 40 MPH
1958 ADT = 70
1975 ADT = 95
DHV = 20
DIRECTIONAL = 70%
TRUCK = 20%

R.O.W. PLANS



LUDLOW	CONTRACTOR	RECORD PLANS	CONTRACTOR	RESIDENT ENG.	DATE
S-0145(1)	EDWIN R. PUTNAM	PAUL D. HURLEY	EDWIN R. PUTNAM	PAUL D. HURLEY	AUGUST 16, 1961.
GROUND ELEVATION					
GRADE ELEVATION					
CURVE DATA					
DEFLECTION OF ANGLE					
DEGREE OF CURVE					
RADIUS OF CURVE					
TANGENT DISTANCE					
LENGTH OF CURVE					
EXTERNAL DISTANCE					
POINT OF INTERSECTION					
POINT OF CURVE					
POINT OF TANGENT					
POINT ON TANGENT					
POINT ON SUB-TANGENT					

SCALES

TITLE	1" = 400'
TYPICAL	1" = 2'
PLAN	1" = 50'
PROFILE	1" = 10'
CROSS-SECTIONS	1" = 5'-10"

APPROVED	APPROVED	APPROVED	APPROVED	APPROVED	APPROVED	APPROVED
DATE	DATE	DATE	DATE	DATE	DATE	DATE

THESE PLANS ARE SUBJECT TO SUCH REVISIONS AS MAY BE REQUIRED BY THE BUREAU OF PUBLIC ROADS OR THE COMMISSIONER OF HIGHWAYS.

DEPARTMENT OF COMMERCE
BUREAU OF PUBLIC ROADS

APPROVED

DIVISION ENGINEER

PROJECT S-0145(1)

SHEET 0 OF 56 SHEETS

DATE 06/25/1959
AN: 608611
Town of VT 100
(To Be Returned To R.O.W. Division)

INDEX OF SHEETS

SHEET NO.	1	TITLE PAGE
	2	TYPICAL CROSS-SECTION OF IMPROVEMENT (SINGLE TACK COAT OF REFINED TAR & BLADE MIX / PEA STONE SEAL WITH CUTBACK ASPHALT, ITEM 317)
	3	QUANTITY SHEET (ITEMS)
	4	ITEM AND DRAINAGE SHEET
	5-6	EARTHWORK SHEETS
	7	STANDARD SHEET B-1 (BANKING TABLES)
	8	B-5 (SLOPE GRADING)
	9	D-1 (PREC. RCP DROP INLET W/COVER)
	10	D-2 (UNDERDRAIN & C.R.M)
	11	E-1 (BARRICADES, SIGNS, LIGHTS)
	12	G-2 (TWO CABLE GUARD RAIL)
	13	G-4 (MARKERS AND GUIDE POSTS)
	14	J-1 (PROJECT MARKERS, BOUNDARY MARKERS)
	15-20	PLAN AND PROFILE SHEETS
	21-26	CROSS SECTIONS

PROJECT NAME & NUMBER	LUDLOW S-0145(1)	TYPE	SINGLE TACK COAT OF REFINED TAR & BLADE MIX / PEA STONE SEAL W/ CUTBACK ASPHALT.	PAVEMENT AREA	18,222 S.Y.
RECORD PLANS					
MATERIALS					
SUB-BASE OF GRAVEL, SUB-BASE OF SAND & GRAVEL BACKFILL - MASSEY PIT - LUDLOW, VT.					
PAVED TAR - OLD COLONY TAR CO. - WORCESTER, MASS.					
CUTBACK ASPHALT - MOBIL OIL CO. - E. PROVIDENCE, R.I.					
P.F. STONE & STONE RUBBLE - VERMONT MARBLE CO. - W. RUTLAND, VT.					
REINFORCED CONCRETE PIPE - VT. CONCRETE PIPE CO. - WINDSOR, VT.					
ASPH. CTD. CORR. GALV. METAL PIPE & UNDERDRAIN - NEW ENGLAND METAL PIPE CO. - WHITE RIVER JCT., VT.					
TWO CABLE GUARD RAIL, WOOD MARKER & GUIDE POSTS - S.T. GRISWOLD CO. INC. - ESSEX JCT., VT.					
SEED & FERTILIZER - LUDLOW SEEDS & SUPPLY CO. - LUDLOW, VT.					
MULCH - EARL COLBY & ROBERT BRIDGE - BRIDGEWATER, VT.					
CONTRACTOR - EDWIN R. PUTNAM			CONTRACT DATED - JULY 12, 1960.		
BRIDGEWATER CORNS., VT.			STARTED - JULY 12, 1960.		
RESIDENT ENG. - PAUL D. HURLEY			COMPLETED - AUG. 16, 1961.		
RECORD PLANS - PAUL D. HURLEY			ACCEPTED - AUG. 16, 1961.		

STATE OF VERMONT
DEPARTMENT OF HIGHWAYS

PROPOSED IMPROVEMENT

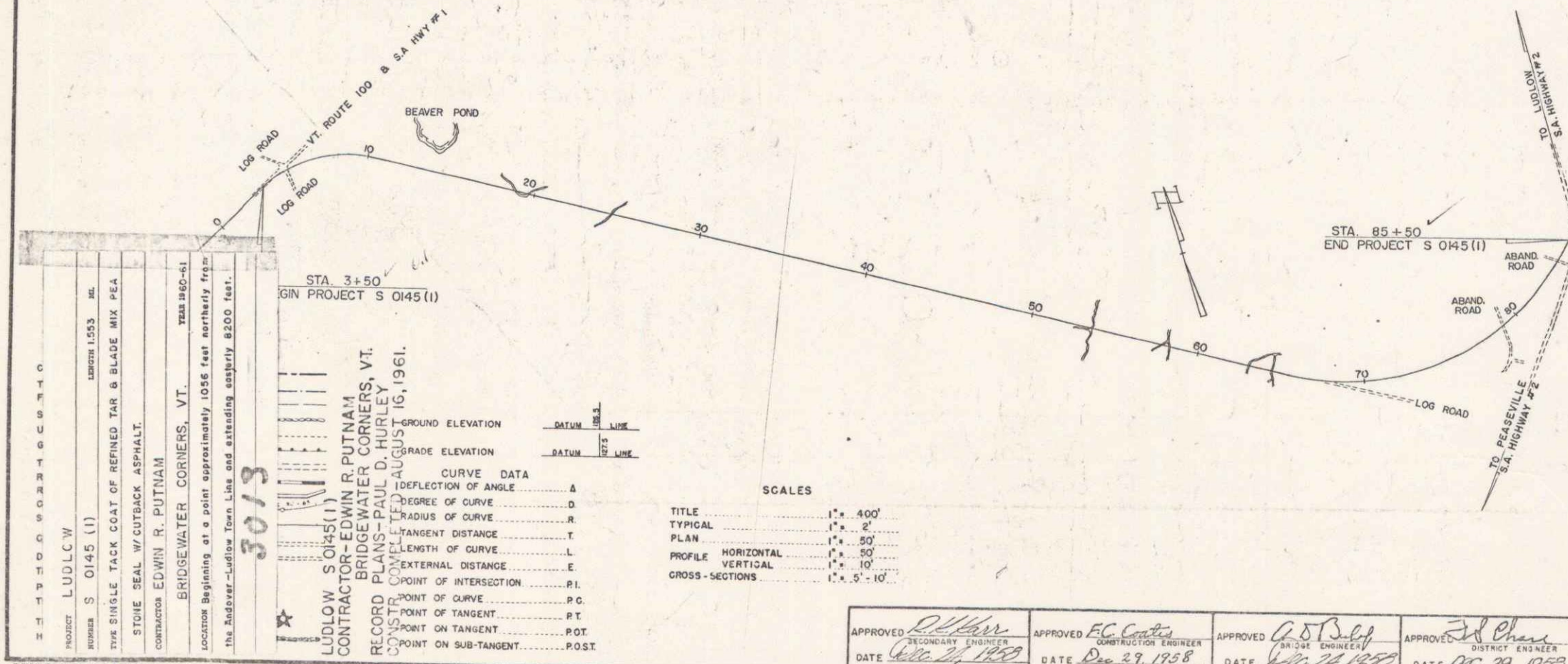
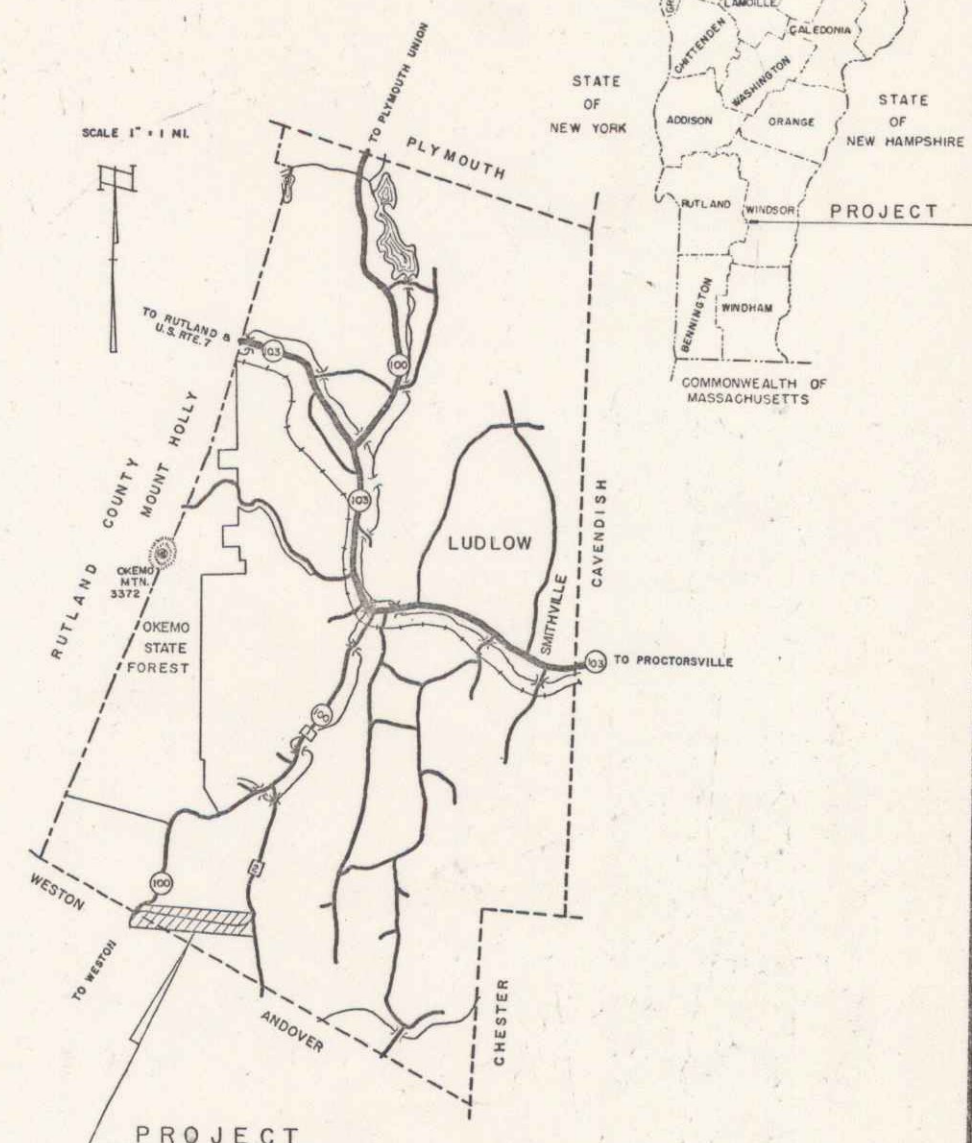
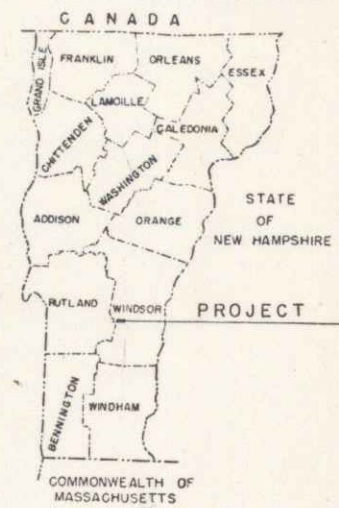
FEDERAL AID SECONDARY PROJECT

TOWN OF LUDLOW
COUNTY OF WINDSOR
VERMONT ROUTE 100
LUDLOW WESTON ROAD

BEGINNING A POINT APPROXIMATELY 1056 FEET NORTHERLY FROM THE ANDOVER-LUDLOW TOWN LINE AND EXTENDING EASTERLY 8200 FEET.
LENGTH OF PROJECT 8200 FEET = 1.553 MILES

DESIGN SPEED = 40 MPH.
1958 ADT = 70
1975 ADT = 95
D.H.V. = 20
DIRECTIONAL = 70%
TRUCK = 20%

FILED ROAD REGION NO.	STATE	PROJECT NO.	SECTION NO.	SHEET NO.	TOTAL SHEETS
VT	S 0145(1)	2057	1	1	56



NOTE: ANY FURTHER INFORMATION CONCERNING FINAL QUANTITIES, AGREES OR OTHER DETAILS RELATIVE TO THIS PROJECT MAY BE OBTAINED EITHER THE FIELD ENGINEER OR THE ESTIMATE FILE.

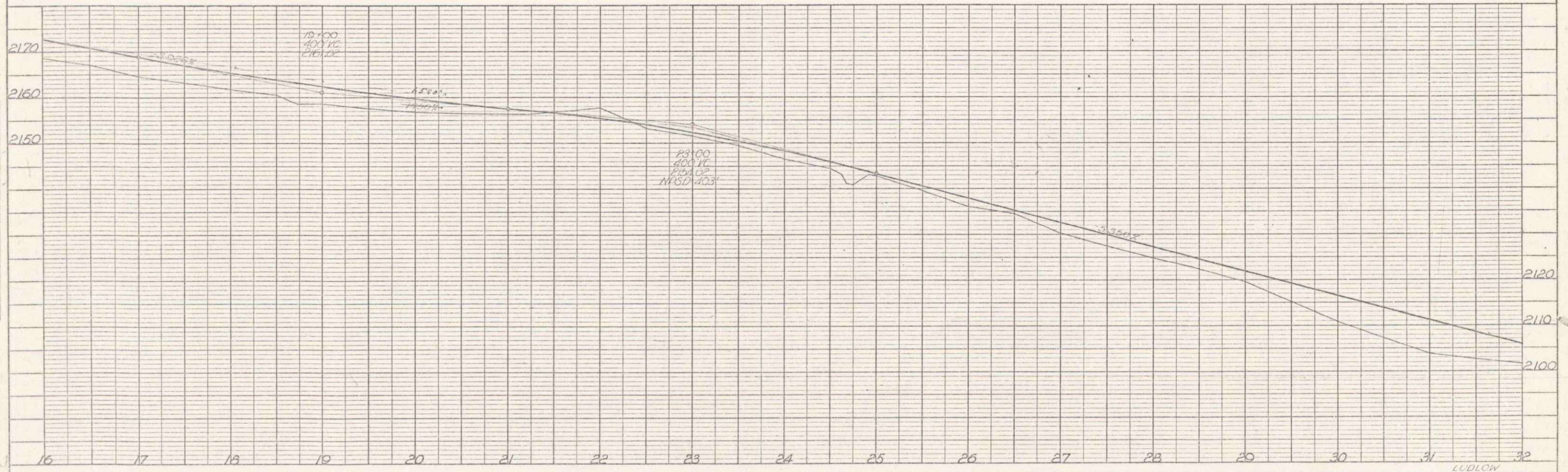
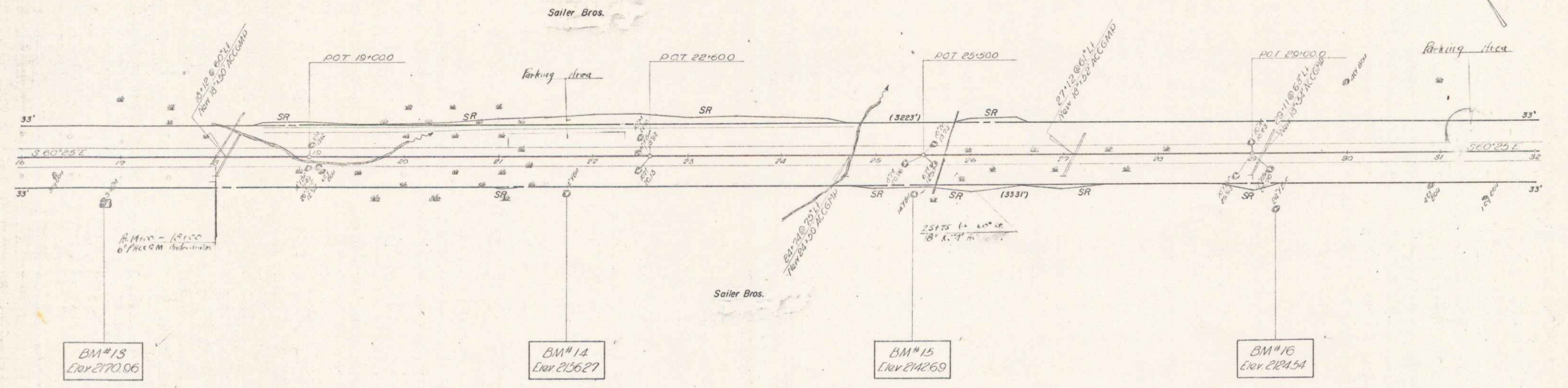
THESE PLANS ARE SUBJECT TO SUCH REVISIONS AS MAY BE REQUIRED BY THE BUREAU OF PUBLIC ROADS OR THE COMMISSIONER OF HIGHWAYS.
CONSTRUCTION IS TO BE CARRIED ON IN ACCORDANCE WITH THE PLANS AND THE STANDARD SPECIFICATIONS FOR HIGHWAY AND BRIDGE CONSTRUCTION OF JANUARY 1956 SUBMITTED TO THE BUREAU OF PUBLIC ROADS AND APPROVED JULY 3, 1956, INCLUDING ALL SUBSEQUENT APPROVED REVISIONS AND SUCH REVISED SPECIFICATIONS AND SPECIAL PROVISIONS AS ARE SUBMITTED WITH THE PLANS.

DEPARTMENT OF COMMERCE BUREAU OF PUBLIC ROADS	
APPROVED	DATE
DIVISION ENGINEER	
PROJECT S No. 0145(1)	
SHEET 1	56 SHEETS

APPROVED [Signature] DATE [Date]	APPROVED [Signature] DATE [Date]	APPROVED [Signature] DATE [Date]	APPROVED [Signature] DATE [Date]	APPROVED [Signature] DATE [Date]	APPROVED [Signature] DATE [Date]
SECONDARY ENGINEER	CONSTRUCTION ENGINEER	ENGINEER	DISTRICT ENGINEER	ENGINEER	CHIEF ENGINEER

TWO CABLE GUARD RAILS
 1.1 R1
 -20183-31192

Wood Gable Trts
 Lt. 1942-2111
 Lt. 27100-29100
 Lt. 27190-28150



PLAN

DATE	7/27
SCALE	1" = 40'
BY	J.L.S.
CHECKED	J.L.S.
NO.	1

PROFILE

DATE	7/27
SCALE	1" = 40'
BY	J.L.S.
CHECKED	J.L.S.
NO.	1

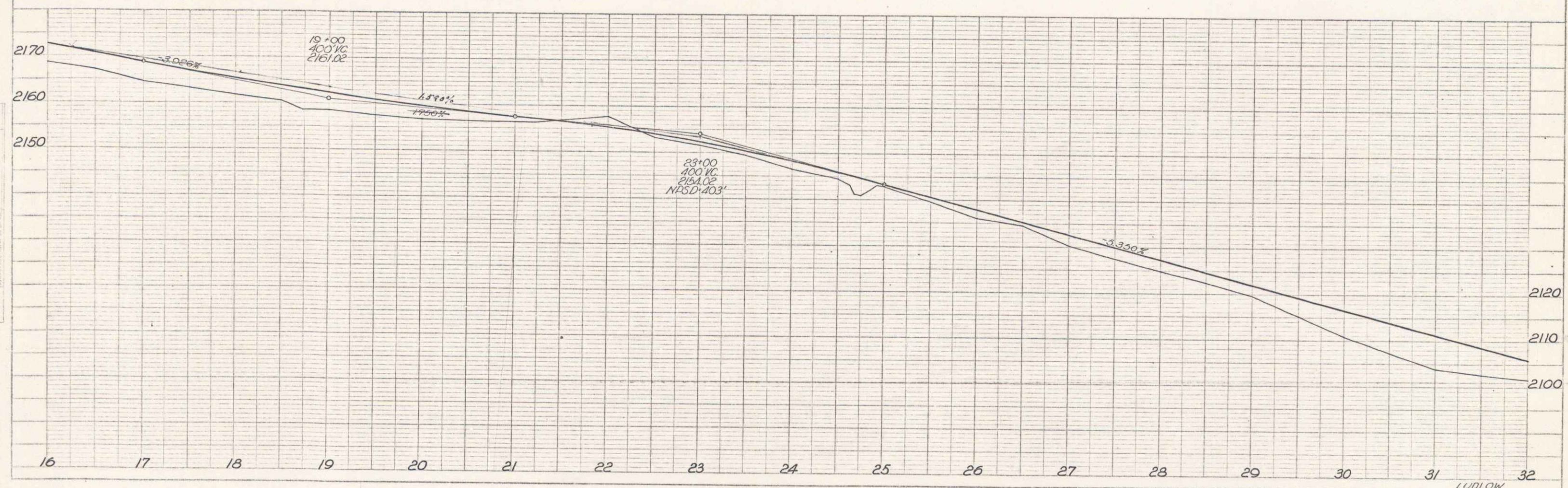
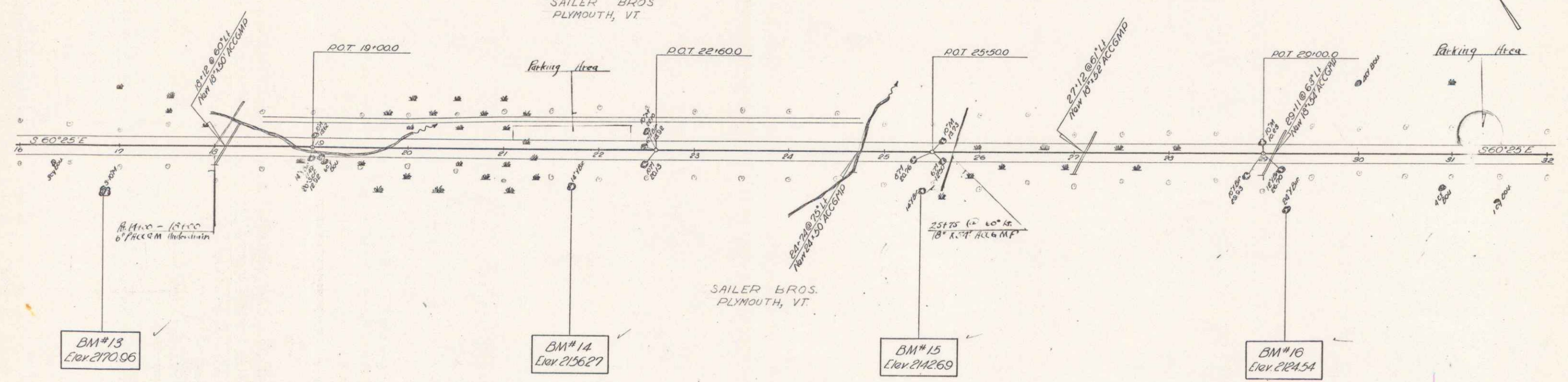
PLATE 1 - PLAN - PROFILE - O.D. & R.C. STANDARD
 HOFFEL & EMMER CO., NEW YORK

LUDLOW
 Proj. 5045 (1)
 Sheet No. 56

TWO CABLE GUARD RAIL
L.A. R.I.
-20+00-31+92-

Wood Guide Posts
St. 18+12 - 21+12 Hi. 29+95 - 32+10
St. 27+00 - 29+00
St. 29+80 - 30+50

SAILER BROS
PLYMOUTH, VT



DATE: 1-30-33
BY: D.H. LUDLOW
CHECKED: S.M. LUDLOW
SCALE: AS SHOWN

DATE: 1-30-33
BY: D.H. LUDLOW
CHECKED: S.M. LUDLOW
SCALE: AS SHOWN

PLATE 1 PLAN, PROFILE & P.O.I. STANDARD
REVISED & CHECKED - NEW YORK
SEE US FOR DETAILS

LUDLOW
Proj. S 0145 (1)
Sheet No. of 56

16A

PLAN
 DATE: 2/28/60
 DRAWN BY: D.H.
 CHECKED BY: [blank]
 PROJECT: [blank]

PROFILE
 DATE: 2/28/60
 DRAWN BY: D.H.
 CHECKED BY: [blank]
 PROJECT: [blank]

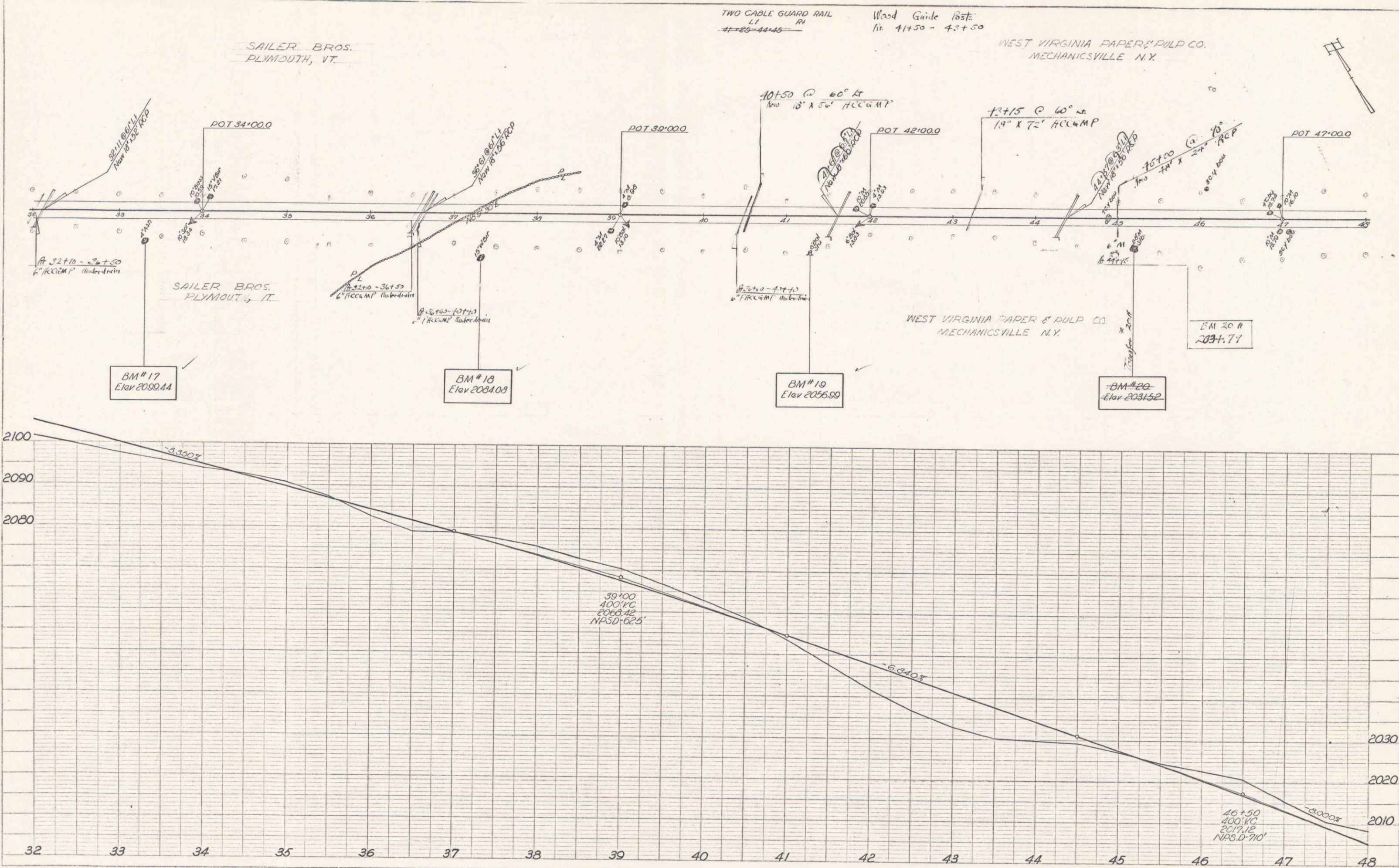
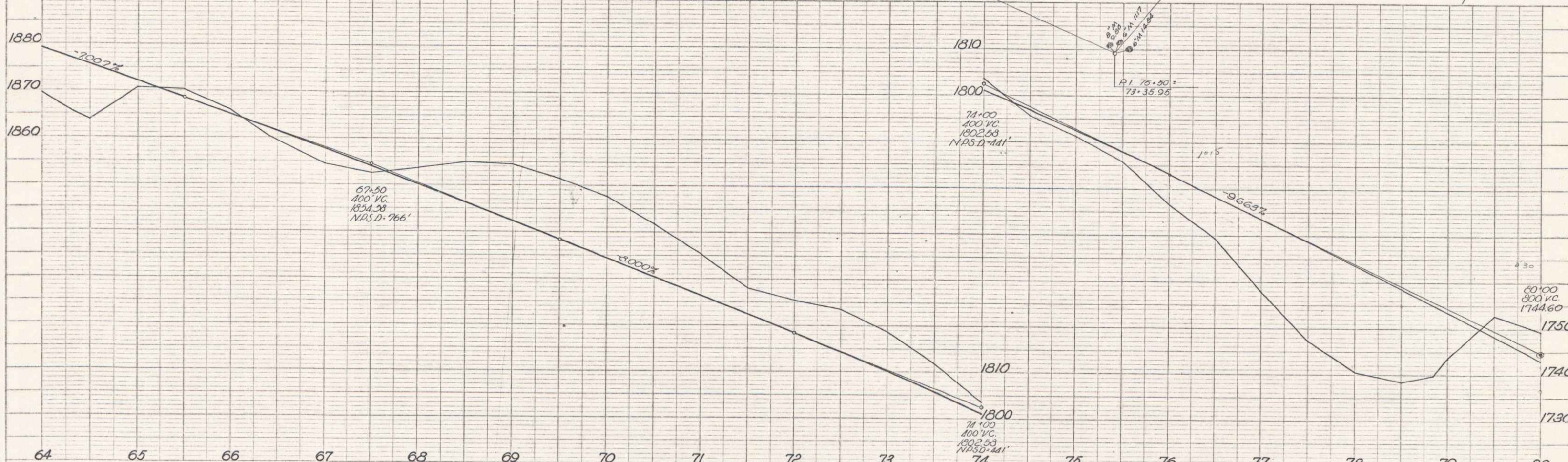
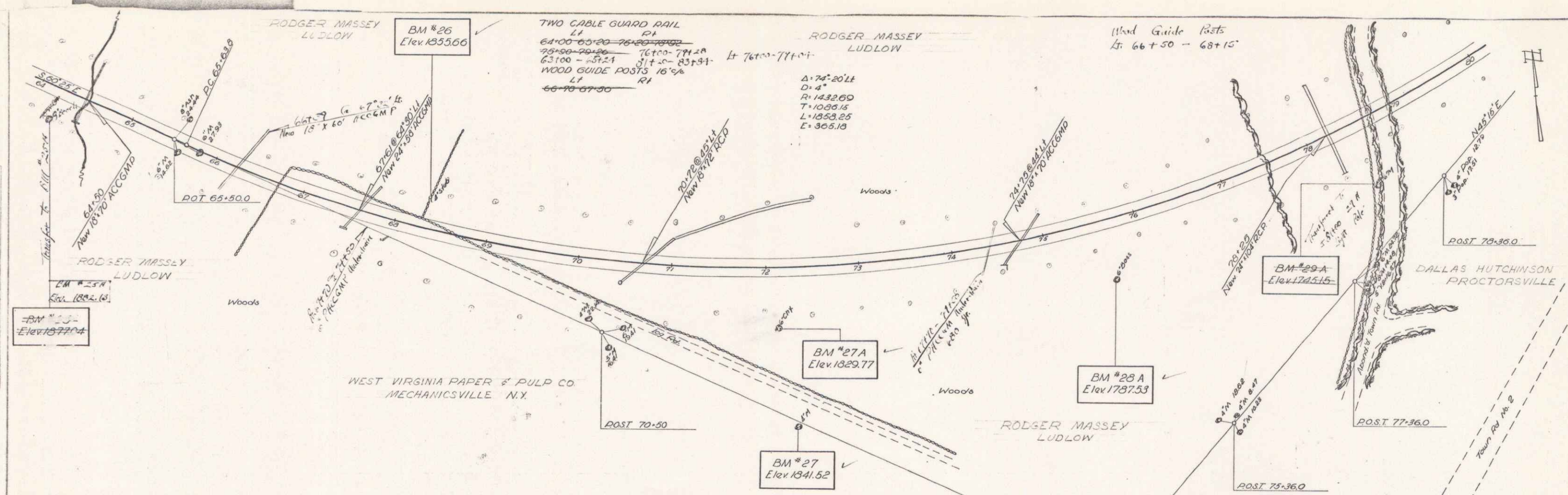


PLATE 1 - PLAN PROFILE & P.A.R.E. DIMENSIONS
 REFERENCE TO SHEET 56
 K&E CO. INC. 1959

LUDLOW
 Proj. S 0145(U)
 Sheet/Plat 56

17A
 8



PLAN

DATE	5/11
SCALE	1" = 100'
PROJECT	...
NO.	...

PROFILE

DATE	5/11
SCALE	1" = 100'
PROJECT	...
NO.	...

PLATE 1 - PLAN - PROFILE OF R.R. & E. STATION
 HOFFMAN'S ENGINE CO. NEW YORK
 R. & E. ENGRS. 100 S. 4TH ST. PHILADELPHIA, PA.

LUDLOW
 Proj. S-0145 (1)
 Sheet 19 of 26

19A 12

DATE	BY
PLANNED	ALL
CHECKED	
IN CHARGE	
BY	

DATE	BY
PLANNED	ALL
CHECKED	
IN CHARGE	
BY	

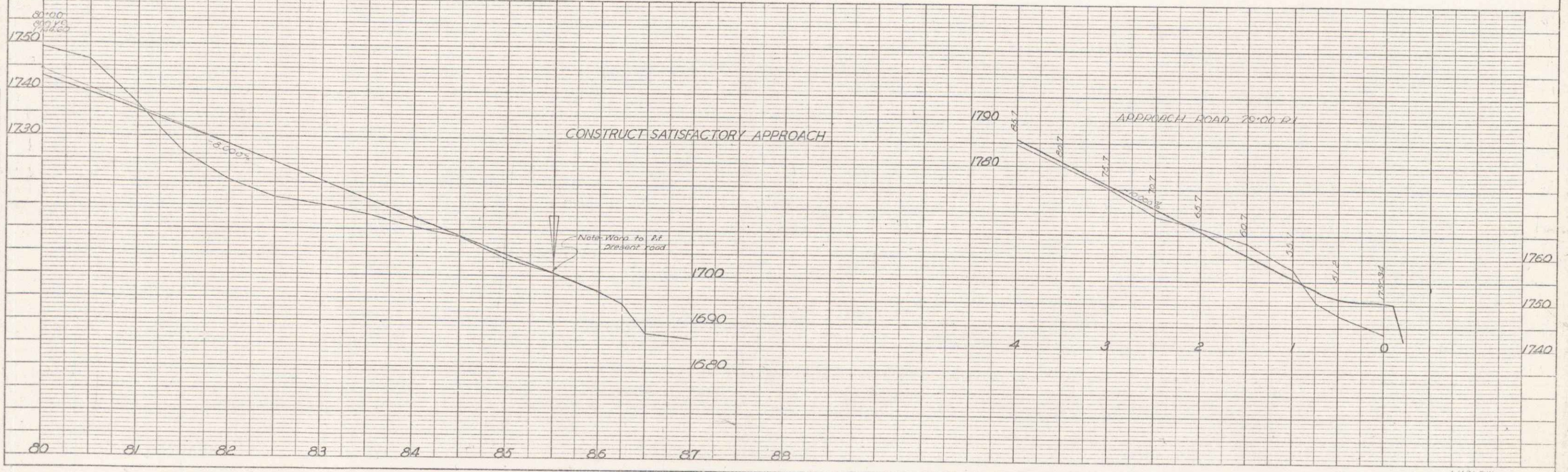
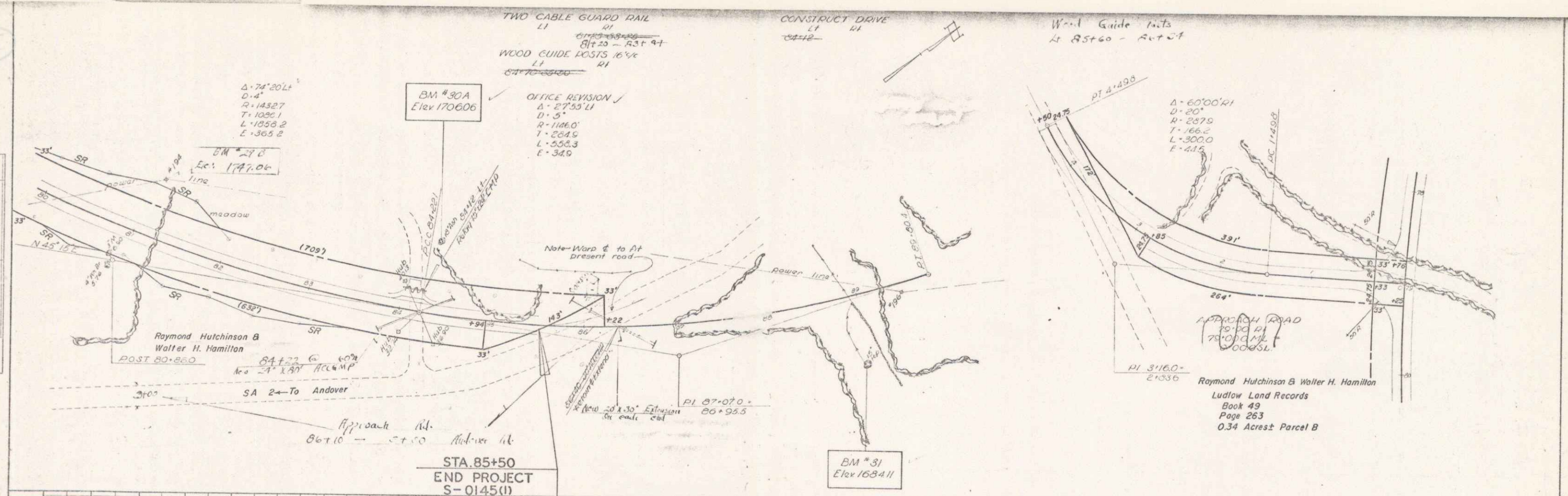


PLATE 11 - PLAN-PROFILE OF F.P.A.E. DESIGN
 NEWELL & EIDER CO., NEW YORK
 P.E.E. CO. NO. 248-C

LUDLOW
 Proj. 1145 (1)
 Sheet 20 of 26

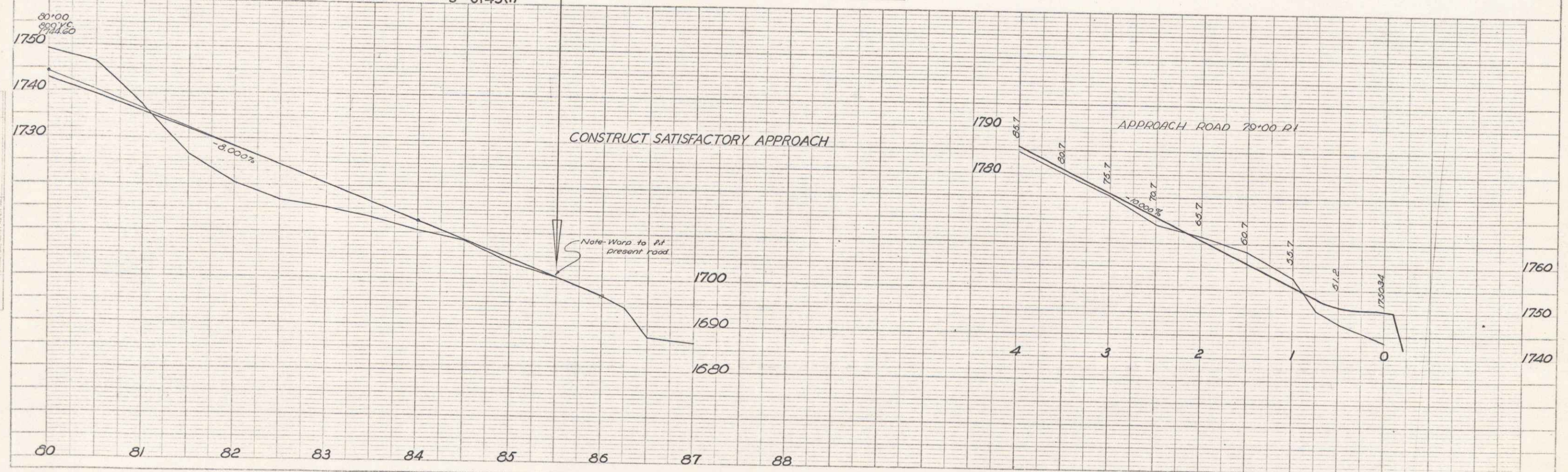
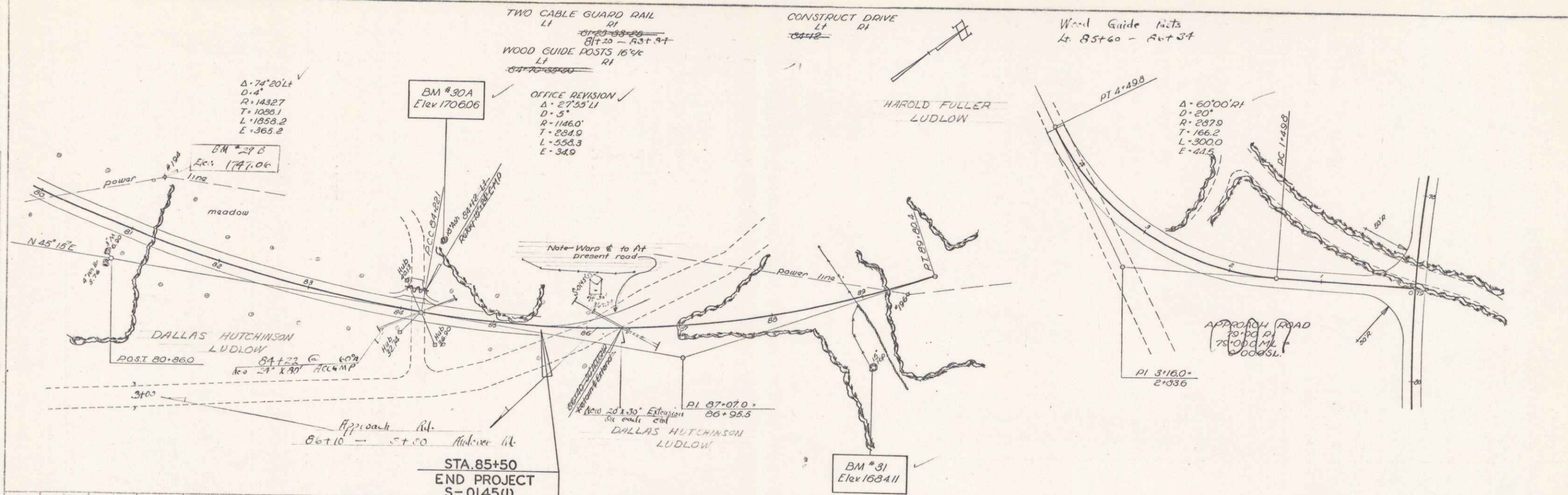


PLATE 1 - PLAN PROFILE 80' P & A & STANDARDS
 REVISIONS & NOTES ON NEW YORK
 A.E.C. No. 348-10

LUDLOW
 Proj. S-0145 (I)
 Sheet 20 of 36

20A 14