

INDEX OF SHEETS

- SHEET NO 1 TITLE PAGE
- 2 TYPICAL CROSS-SECTION OF IMPROVEMENT DOUBLE TRACK COAST OF REFINED TAR WITH PEA-STONE SEAL, ITEM 512-A MOD
- 3 BANKING AND WIDENING TABLES
- 4 QUANTITY SHEET (ITEMS) (DRAINAGE)
- 5-7 EARTHWORK SHEETS
- 8 CONSTRUCTION DETAILS CO (DRAINAGE AND MARKERS)
- 9 CONSTRUCTION DETAILS CO-1 (DITCHES)
- 10 STANDARD STRUCTURE SHEET S-40 (BARRICADES, SIGNS AND LIGHTS)
- 11 STANDARD STRUCTURE SHEET S-45-45 (TWO CABLE GUARD RAIL)
- 12 STANDARD STRUCTURE SHEET S-53-48 (PRECAST REINF. CONC PIPE D.I.)
- 13-21 PLAN AND PROFILE SHEETS
- 22 DETAILS OF NEW POSTS AND U.S. HEADWALL STA. 193+39
- 23 REINFORCING STEEL SCHEDULE
- 24-47 CROSS SECTIONS

STANDARD STRUCTURE SHEET APPROVED BY THE CHIEF ENGINEER, VERMONT STATE DEPARTMENT OF HIGHWAY. ...

5-40 JUNE 10, 1950

PROJECT NAME & NUMBER	TYPE	PAVEMENT AREA
LONDONDERRY-WESTON ST 242 L	DBL. TRACK COAST	24924 S.Y.
RECORD PLANS		
MATERIALS		
SUB-BASE OF GRAVEL WOODCOCK PIT, WESTON FOSTER PIT, WESTON	REINF. STEEL ALBANY STEEL & IRON SUPPLY CO. ALBANY, N. Y.	
REFINED TAR OLD COLONY TAR CO. CANON, MASS. WARRETT TBS CO. WALDEN, VAS.	R.C.P. VT. CONC. PIPE CORP., WINDSOR WESTMINSTER, STA.	
PEASTONE SEAL DAILEY PL. SO. SHAFTSBURY	A.C.C.G.M.P. BERGER METAL CULVERT CO. WESTMINSTER, STA.	
CEMENT ATLAS PORT. CEM. CO., HUDSON, N. Y.	G.R. CABLE W.M. STEEL & WIRE CO., NEW HAVEN, CONN. BERGER METAL CULVERT CO. WESTMINSTER, STA.	
CONC. AGGREGATES DAILEY PL. SO. SHAFTSBURY	6" UNDERDRAIN	
CONTRACTOR WM. E. DAILEY	CONTRACT DATED	JUNE 22, 1954
RESIDENT ENG'R. WALTER HENRY	CONTRACT STARTED	JULY 12, 1954
INSPECTORS	CONTRACT COMPLETED	JULY 30, 1955
RECORD PLANS G. A. A.	CONTRACT ACCEPTED	JULY 30, 1955

STATE OF VERMONT  
DEPARTMENT OF HIGHWAYS

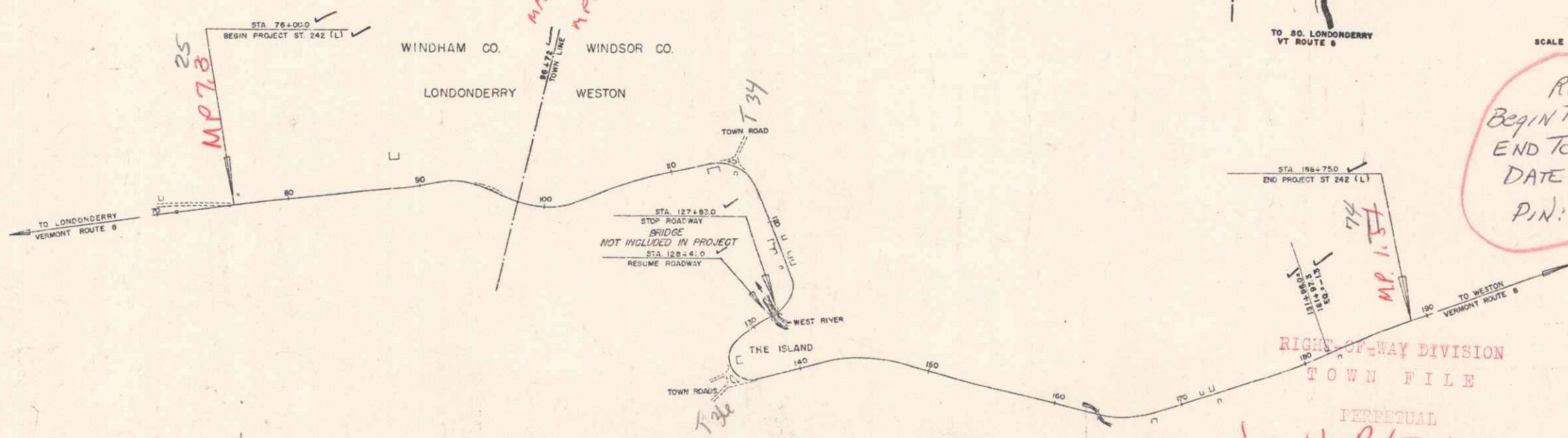
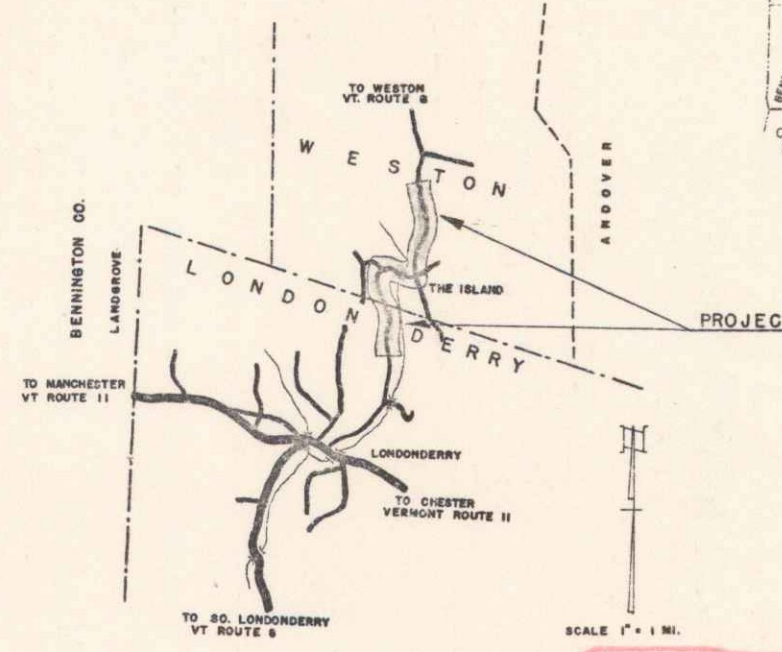
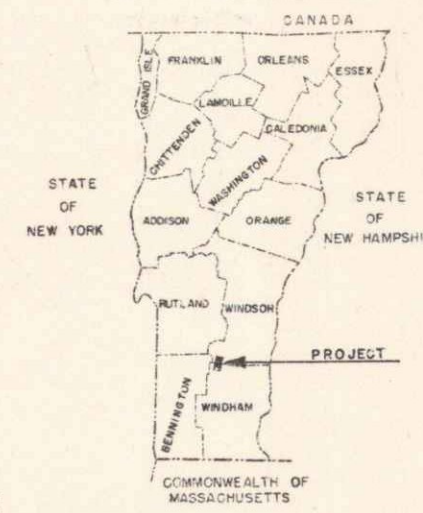
PROPOSED IMPROVEMENT

STATE PROJECT  
TOWNS OF LONDONDERRY-WESTON  
COUNTIES OF WINDHAM-WINDSOR  
VERMONT ROUTE 8  
LONDONDERRY-WESTON ROAD

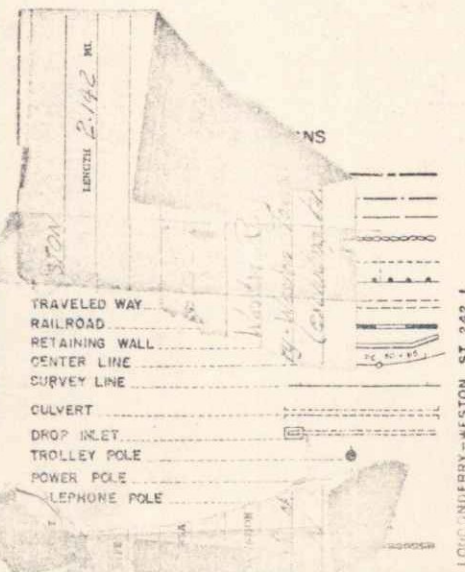
BEGINNING AT A POINT 2,072.0 FEET SOUTH OF THE LONDONDERRY-WESTON TOWN LINE AND EXTENDING NORTHERLY 11,277 FEET. (EXCLUDING BRIDGE)

LENGTH OF PROJECT 11,215.7 FEET = 2.124 MILES

FED. ROAD DIST. NO.	STATE PROJECT NO.	YEAR	SHEET NO.	TOTAL SHEETS
1	ST 242(L) W.A.	1	47	



ROUTE: VT100  
BEGIN TOWN: LONDONDERRY  
END TOWN: WESTON  
DATE: 03/23/1954  
P.I.N.: 008608



GROUND ELEVATION	DATUM	LINE
GRADE ELEVATION	DATUM	LINE

Londonderry  
Weston  
MP 7.8 to 7.65  
MP 0.0 to 1.54

RIGHT-OF-WAY DIVISION  
TOWN FILE  
PERPETUAL  
To of U.R. to 100  
(To Be Returned to 2.072 of Station)  
THESE PLANS ARE SUBJECT TO SUCH REVISIONS AS MAY BE REQUIRED BY THE BUREAU OF PUBLIC ROADS OR THE COMMISSIONER OF HIGHWAYS.  
CONSTRUCTION IS TO BE CARRIED ON IN ACCORDANCE WITH THE PLANS AND THE STANDARD ROAD AND BRIDGE SPECIFICATIONS OF 1948, AS APPROVED JULY 25, 1949 BY THE BUREAU OF PUBLIC ROADS, INCLUDING ALL SUBSEQUENT APPROVED REVISIONS AND SUCH REVISED SPECIFICATIONS AND SPECIAL PROVISIONS AS ARE SUBMITTED WITH THE PLANS.

NOTE: ANY FURTHER INFORMATION CONCERNING FINAL QUANTITIES, AMOUNTS OR OTHER DETAILS RELATIVE TO THIS PROJECT MAY BE FOUND IN EITHER THE FIELD BOOKS OR THE ESTIMATE FILE.

APPROVED	DATE	APPROVED	DATE	APPROVED	DATE	APPROVED	DATE
DISTRICT ENGINEER	6/11/54	SECTION ENGINEER	6/21/54	DESIGNER	6/21/54	CHECKER	6/21/54

DEPARTMENT OF COMMERCE  
BUREAU OF PUBLIC ROADS

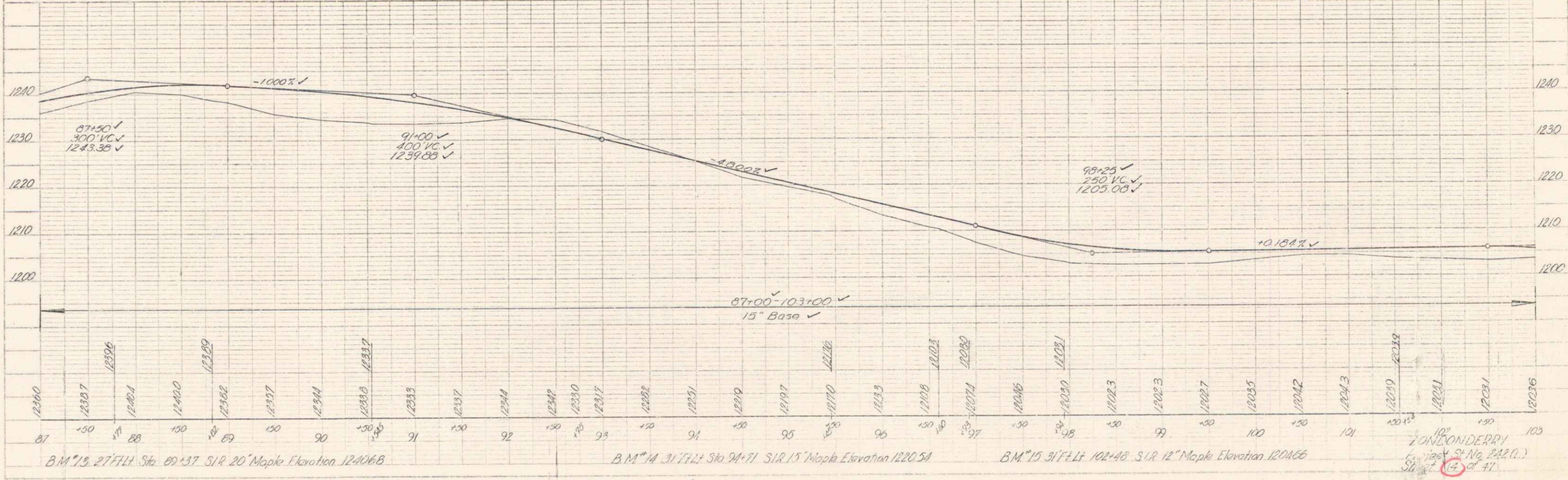
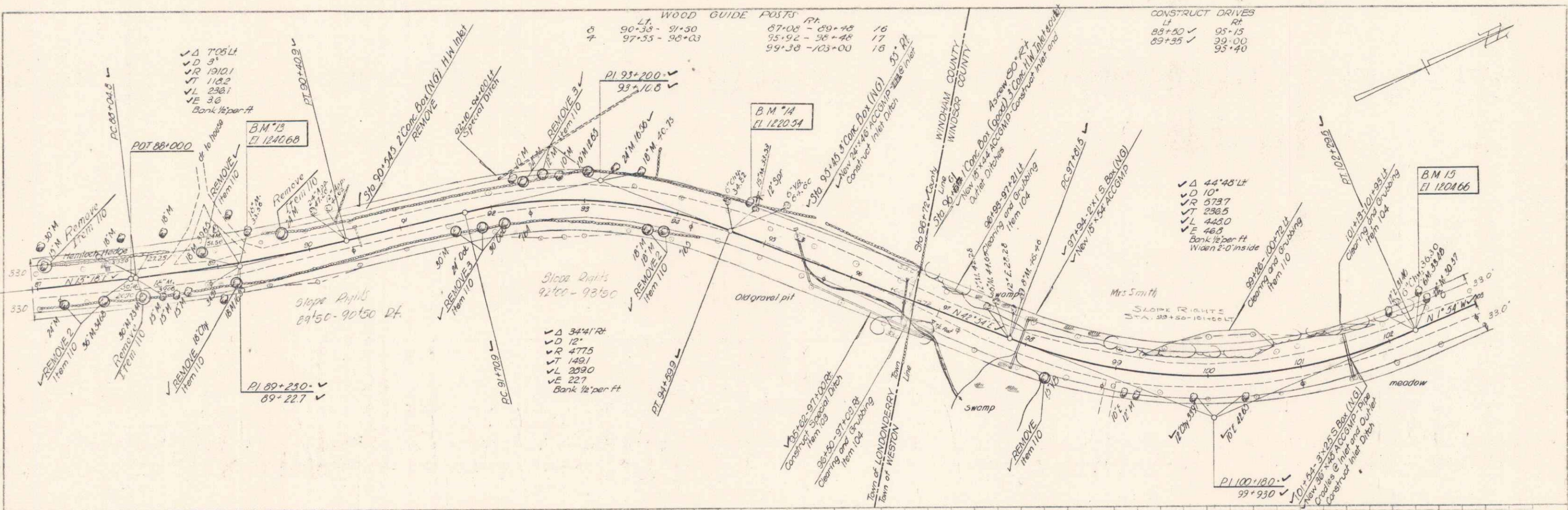
PROJECT ST. NO. 242 (L)

SHEET 1 OF 47 SHEETS



PLAN  
DATE  
BY  
SCALE  
1" = 40'

PROFILE  
DATE  
BY  
SCALE  
1" = 4'



B.M. 13 27' Ht. Sta. 89+37 S.R. 20' Maple Elevation 1246.68

B.M. 14 31' Ht. Sta. 94+71 S.R. 15' Maple Elevation 1220.54

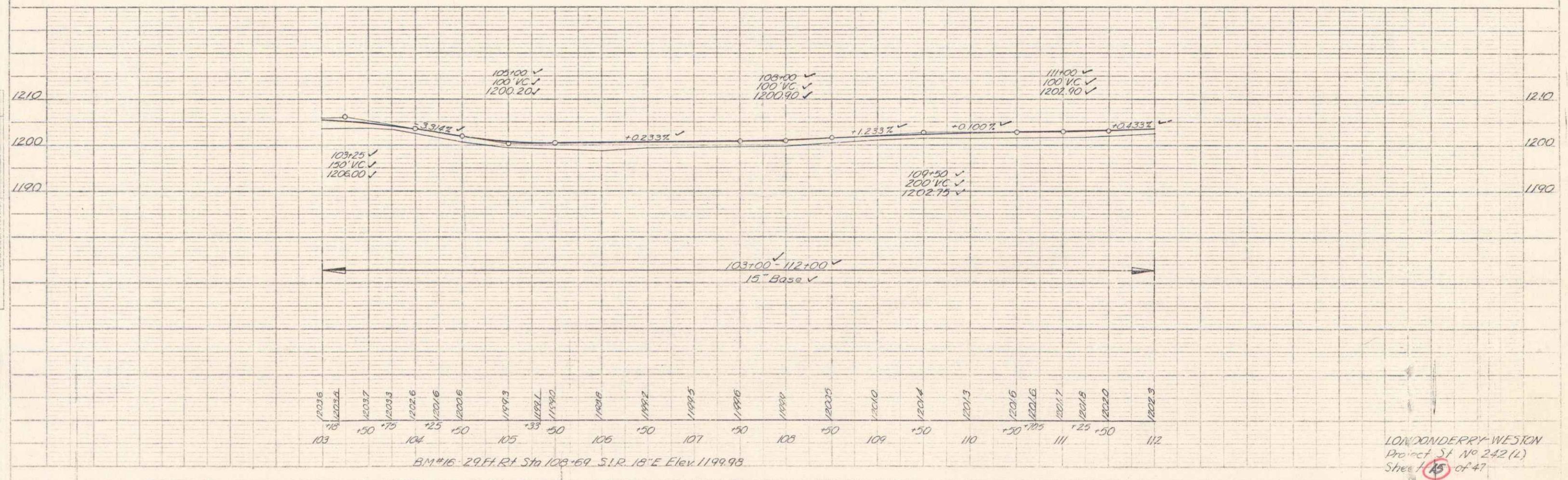
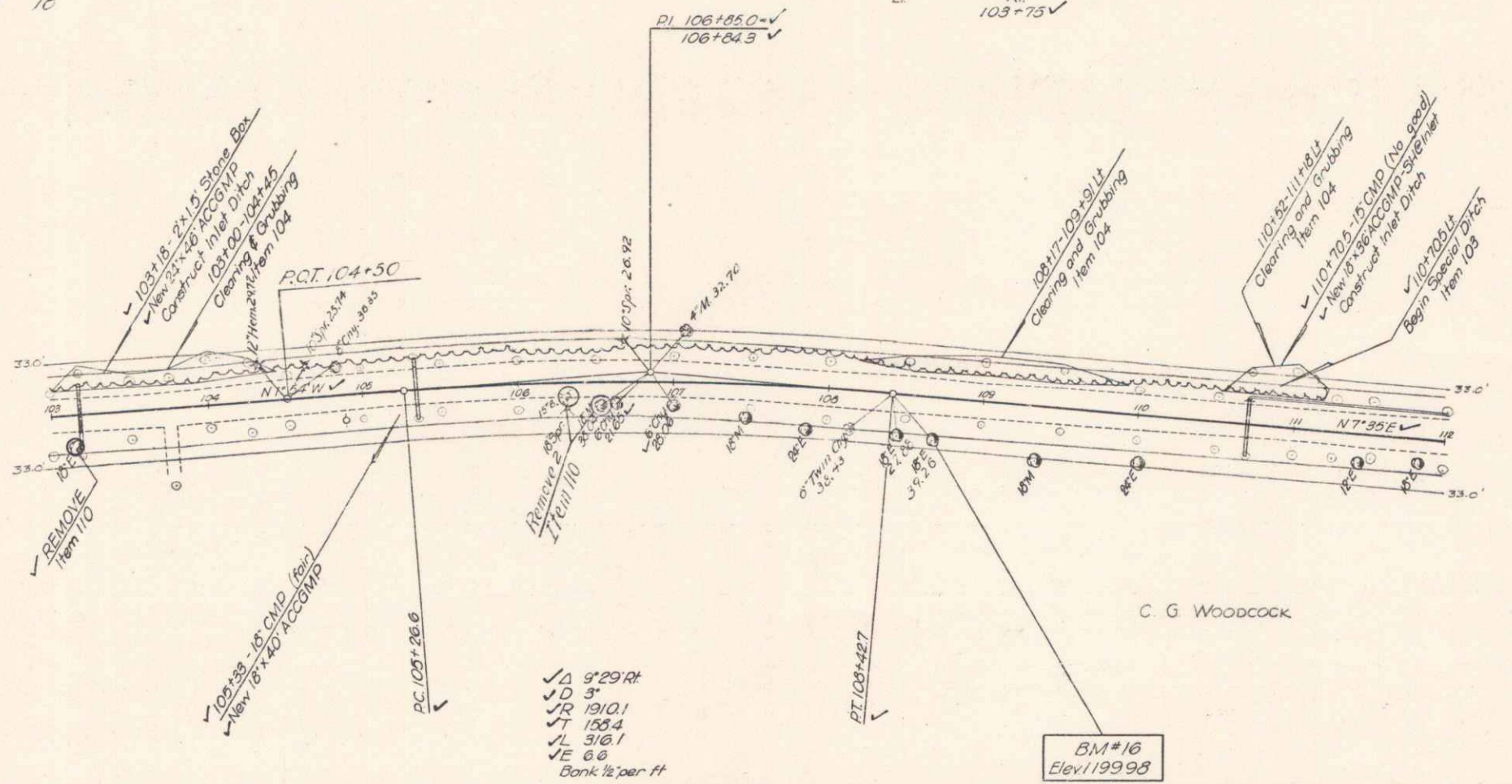
B.M. 15 31' Ht. Sta. 102+48 S.R. 12' Maple Elevation 1204.66

LONDON DERRY  
SHEET No. 222 (L.)  
Sheet 14 of 47

PLAN  
 DATE 10/23/54  
 DRAWN BY Goss  
 CHECKED BY Goss  
 APPROVED BY Goss  
 TITLE LONDONDERY-WESTON  
 PROJECT ST. NO. 242 (L)  
 SHEET 45 OF 47

WOOD GUIDE POSTS  
 LT. 103+00 - 103+38 10

CONSTRUCT DRIVES  
 RT. 103+75 ✓



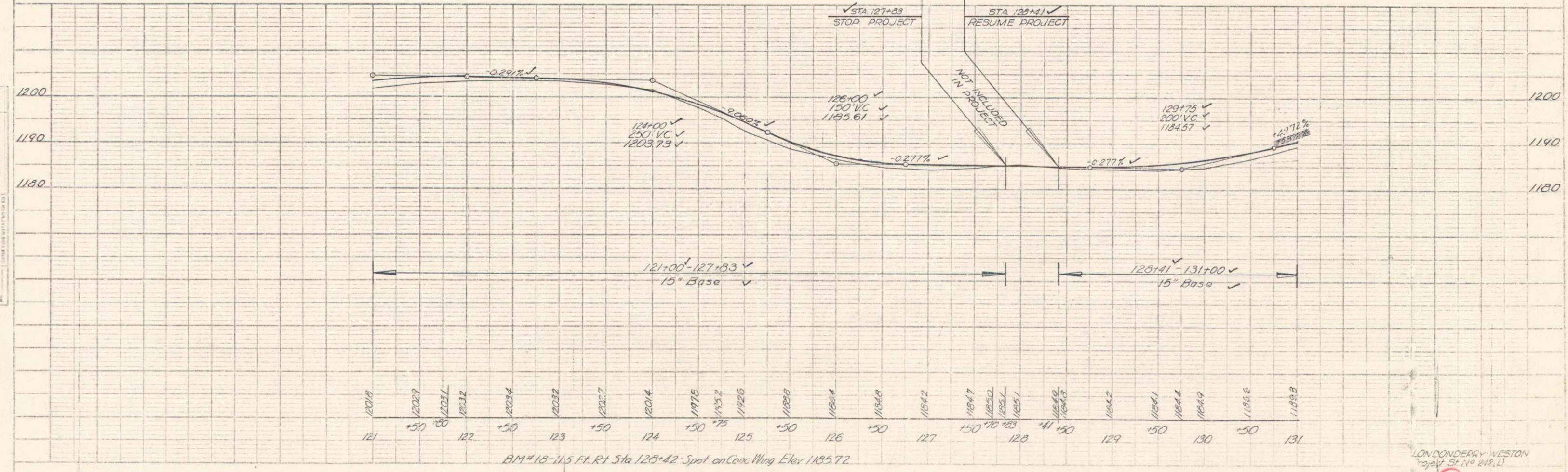
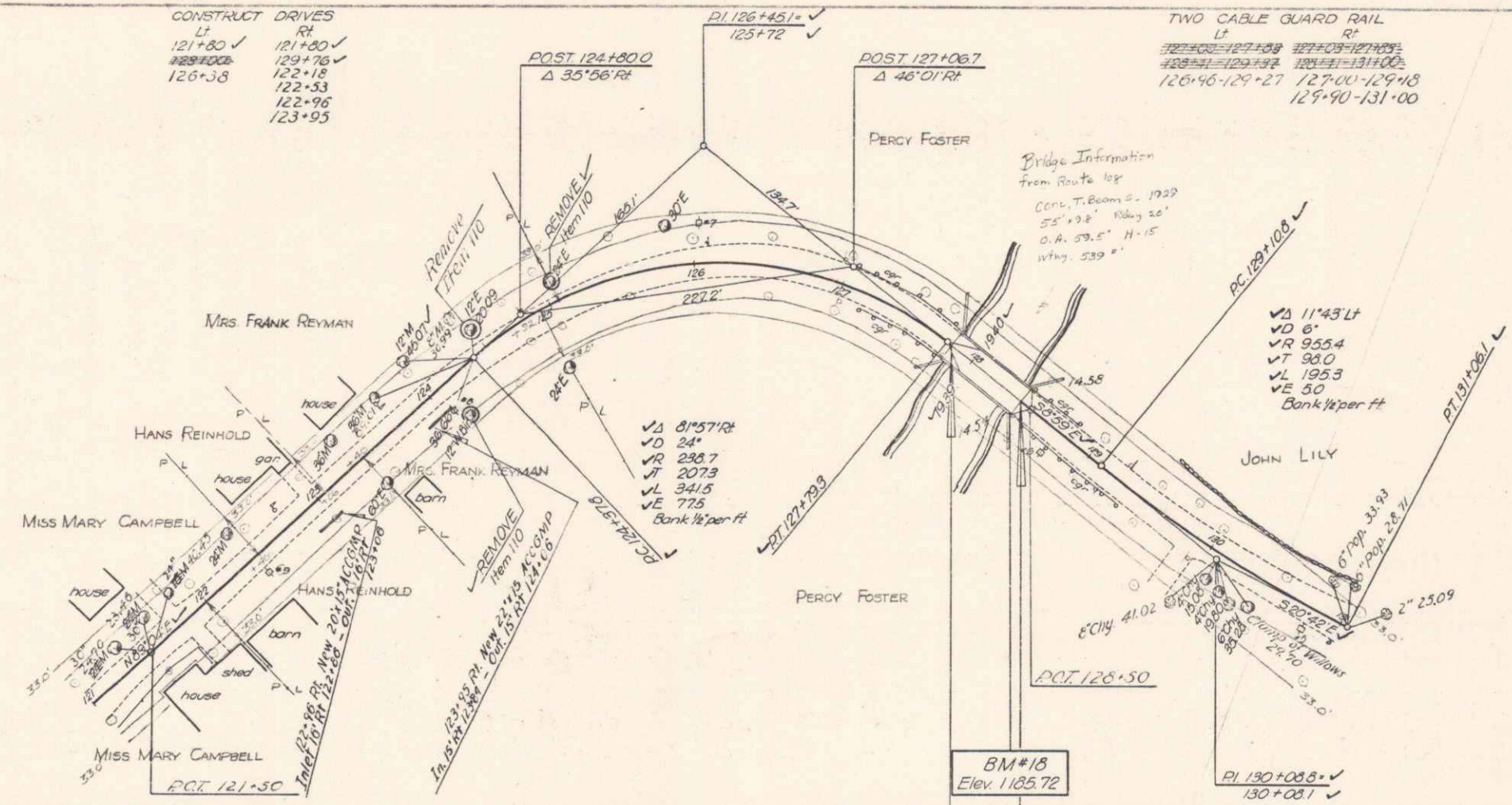
LONDONDERY-WESTON  
 Project St. No 242 (L)  
 Sheet 45 of 47



WOOD GUIDE POSTS  
 9 124+82-126+10

CONSTRUCT DRIVES  
 121+80 ✓ 121+80 ✓  
 129+76 ✓ 129+76 ✓  
 126+38 122+33  
 122+96  
 123+93

TWO CABLE GUARD RAIL  
 126+46-129+27 127+00-129+18  
 129+40-131+00



PLAN  
 1/2" = 100'  
 1/4" = 50'

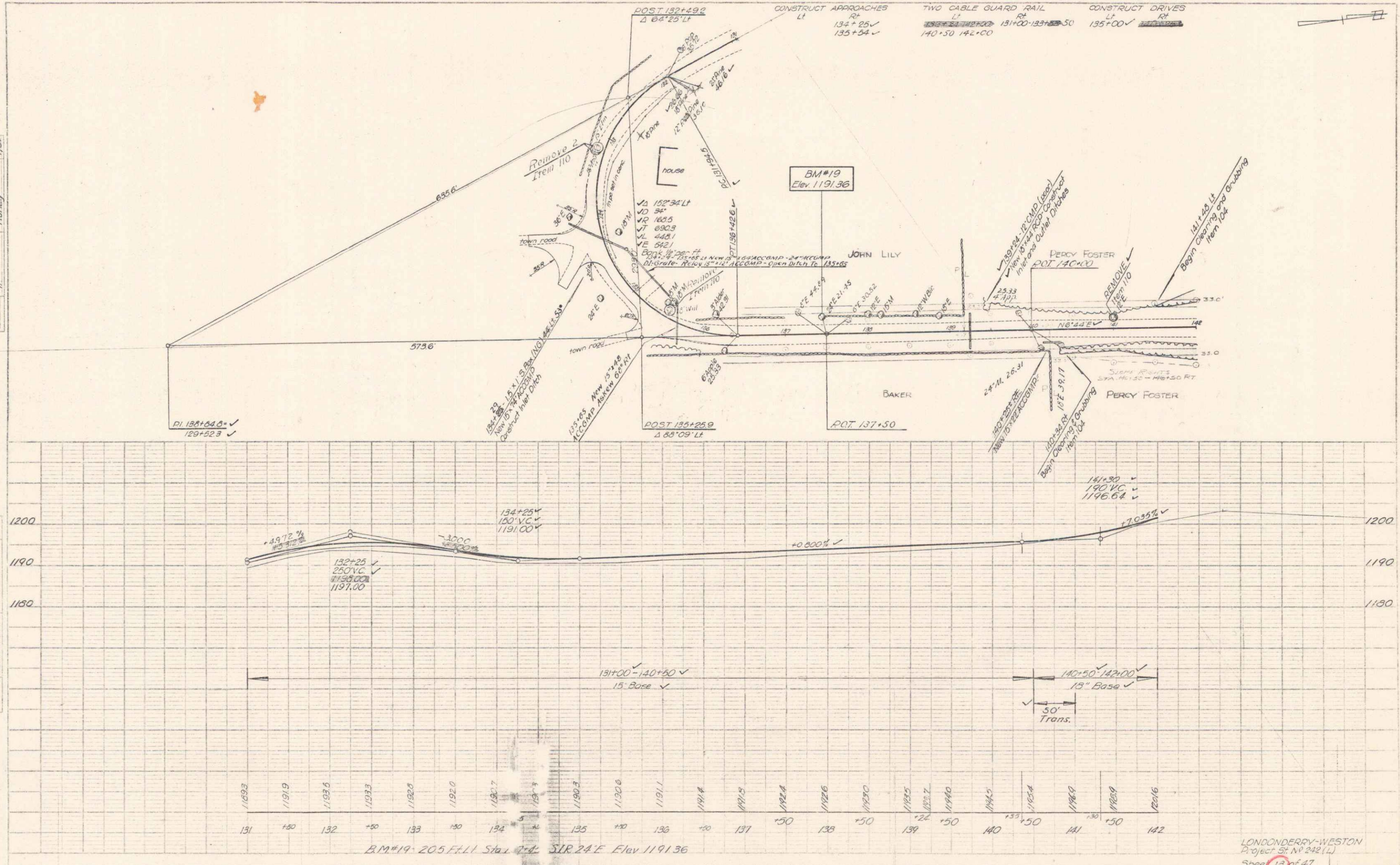
PROFILE  
 1/8" = 10'  
 1/4" = 20'

LONDONDERRY WESTON  
 Proj. No. 24811  
 17 of 47

6

PLAN  
 DATE: 12/25/54  
 DRAWN BY: G. W. HURLEY  
 CHECKED BY: J. F. HURLEY  
 NO. 11784

PROFILE  
 DATE: 1/31/54  
 DRAWN BY: G. W. HURLEY  
 CHECKED BY: J. F. HURLEY  
 NO. 11784



LONDONDERRY-WESTON  
 Project No. 242 (L)  
 Sheet 13 of 47





PLAN  
 DATE: 12/18/58  
 DRAWN BY: G.A. AG  
 CHECKED BY: HURLEY  
 SCALE: 1/4" = 10'

PROFILE  
 DATE: 12-18-58  
 DRAWN BY: G.A. AG  
 CHECKED BY: HURLEY  
 SCALE: 1" = 10'

