

PARCEL #16 A, B, & C
 INSTRUMENT Q.C.D.O.E.
 DATE 11-18-49

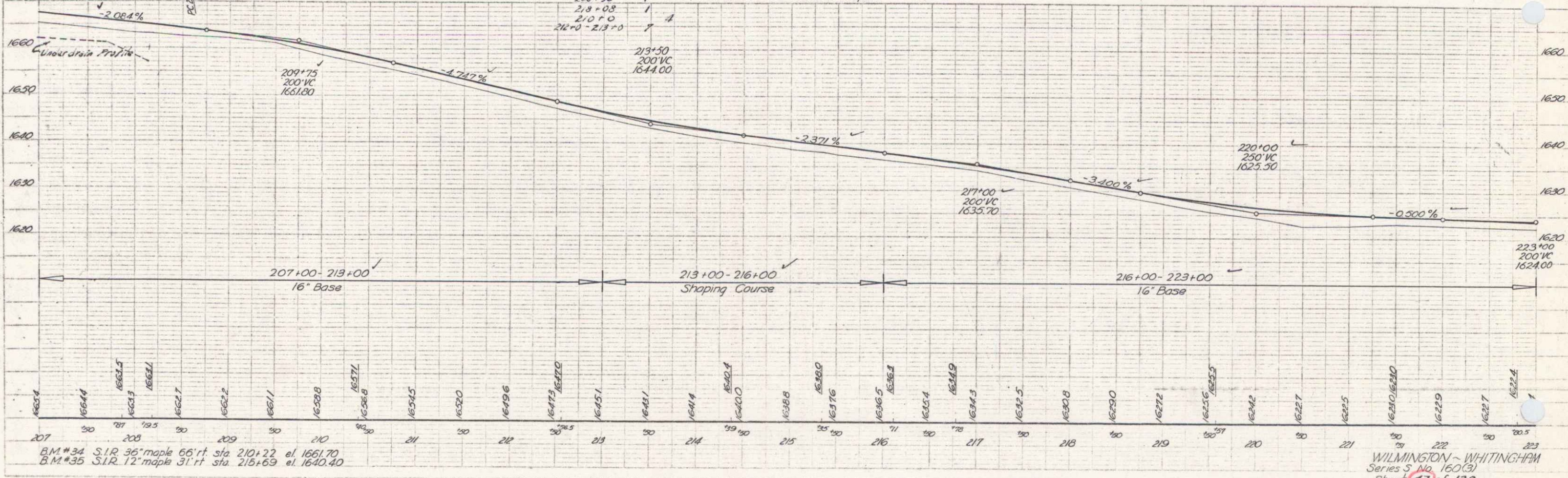
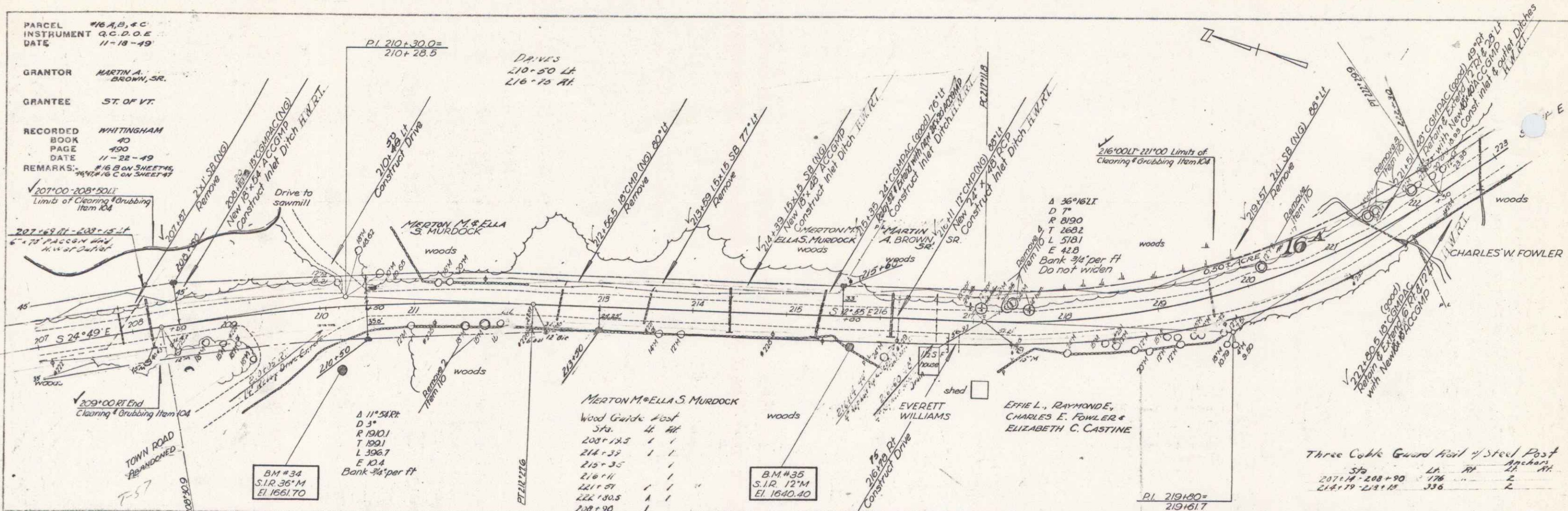
GRANTOR MARTIN A. BROWN, SR.
 GRANTEE ST. OF VT.

RECORDED WHITINGHAM
 BOOK 40
 PAGE 190
 DATE 11-22-49

REMARKS: #16 B ON SHEETS #15 & #16 C ON SHEET #17

PLAN
 Papp's Jr.
 12-49
 J.C.C.
 3-49

PLAN
 Papp's Jr.
 12-49
 J.C.C.
 3-49



BM #34 S.I.R. 36" maple 66' ft Sta 210+22 el. 1661.70
 B.M. #35 S.I.R. 12" maple 31' ft Sta. 216+69 el. 1640.40

Three Cable Guard Rail w/ Steel Post
 Sta. LA. Rt. Anchors
 207+14-208+90 176 2
 218+79-219+25 336 2

WILMINGTON - WHITINGHAM
 Series 5 No. 160(3)
 Sheet 43 of 128