

REV. CURVE DATA  
 P.I. 15+46.4  
 P.C. 15+36.4  
 P.T. 15+56.4  
 Δ = 1°06'17"  
 D = 4"  
 R = 1332.40  
 T = 13.75  
 L = 27.50  
 E = 0.07  
 Bank 3/4' ft

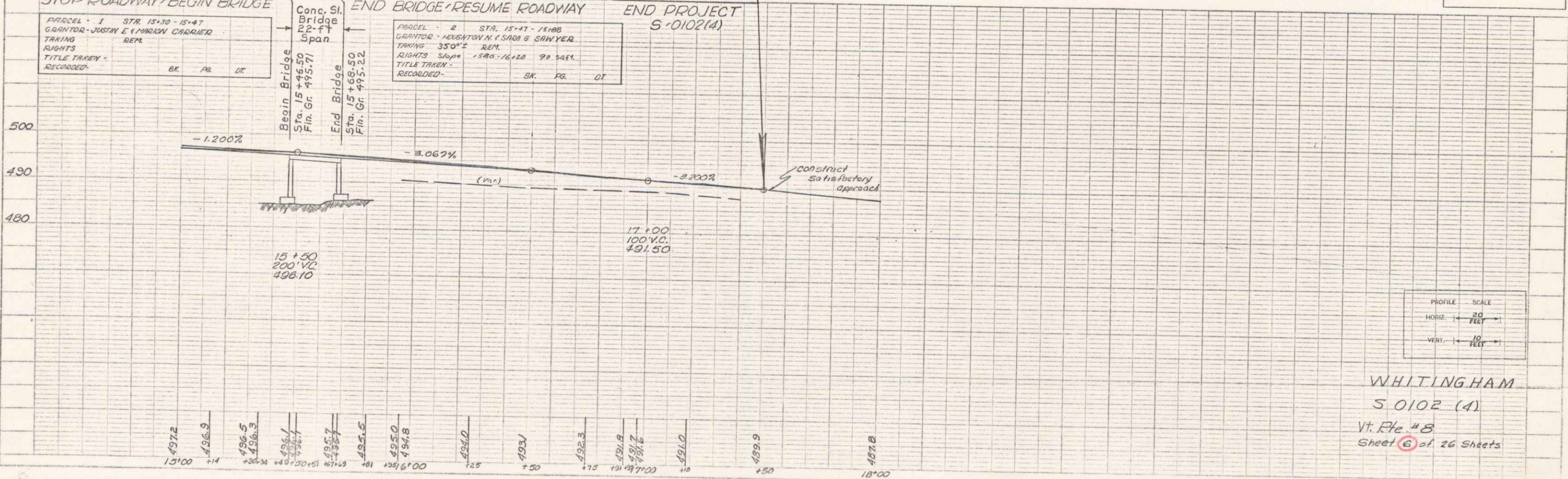
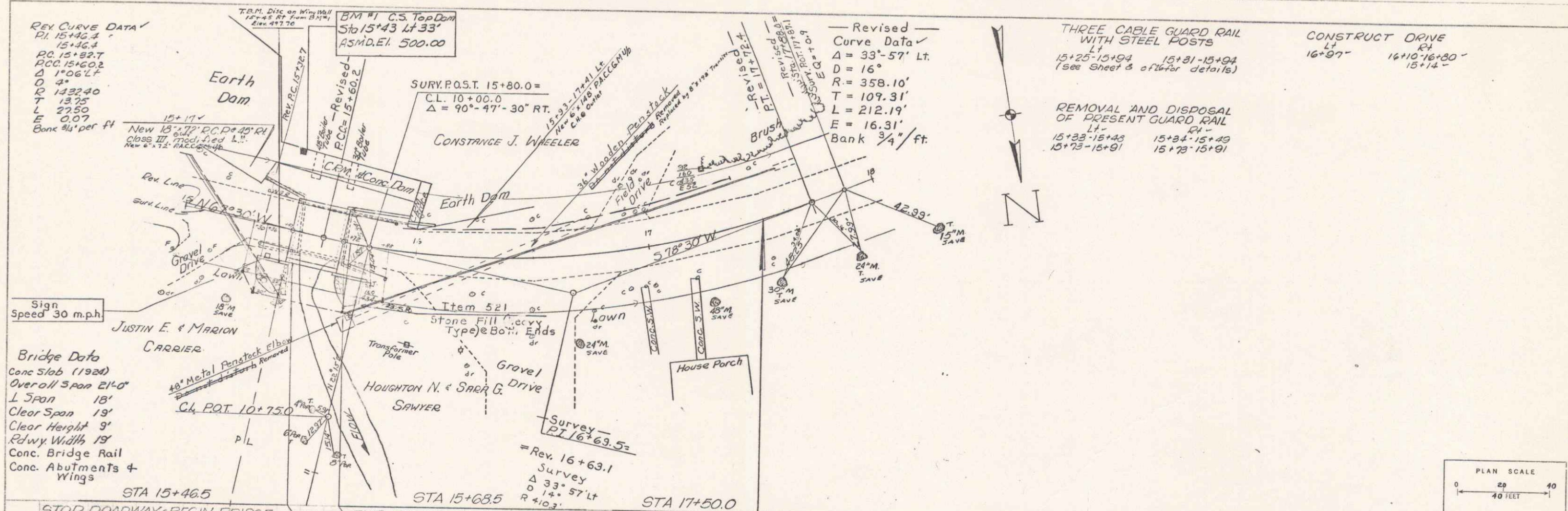
B.M. #1 C.S. Top Dam  
 Sta 15+43 Lt 33'  
 AS.M.D.E.I. 500.00

Revised  
 Curve Data  
 Δ = 33°-57' Lt.  
 D = 16"  
 R = 358.10'  
 T = 109.31'  
 L = 212.19'  
 E = 16.31'  
 Bank 3/4' ft.

THREE CABLE GUARD RAIL  
 WITH STEEL POSTS  
 L<sub>1</sub> 15+25-15+94  
 L<sub>2</sub> 15+31-15+94  
 (See Sheet 3 of 26 for details)

CONSTRUCT DRIVE  
 L<sub>1</sub> 16+97'  
 L<sub>2</sub> 16+10-16+80'  
 L<sub>3</sub> 15+12'

REMOVAL AND DISPOSAL  
 OF PRESENT GUARD RAIL  
 L<sub>1</sub> 15+23-15+23  
 L<sub>2</sub> 15+24-15+29  
 L<sub>3</sub> 15+23-15+91  
 L<sub>4</sub> 15+78-15+91



PLAN  
 DATE: 1/25/58  
 DRAWN BY: [Name]  
 CHECKED BY: [Name]

PROFILE  
 DATE: 1/25/58  
 DRAWN BY: [Name]  
 CHECKED BY: [Name]

WHITINGHAM  
 S. 0102 (A)  
 Vt. Rte. #8  
 Sheet 6 of 26 Sheets

BR-2

3