

P.W.A.
DOCKET
1040-E 1936
EXTENSION

INDEX OF SHEETS

SHEET NO. 1	TITLE SHEET
2	TYPICAL CROSS-SECTION OF IMPROVEMENT 3" BITUMINOUS MACADAM SURFACE COURSE
3	BANKING AND WIDENING TABLES
4-6	PLAN AND PROFILE SHEETS
7	STANDARD SHEET S-28; PIPE CULVERTS
8	STANDARD SHEET S-31; BOUNDARY MARKERS
9	STANDARD SHEET S-40; BARRICADES, SIGNS, LIGHTS.
10-18	CROSS-SECTION SHEETS

STATE OF VERMONT

PUBLIC WORKS ADMINISTRATION DOCKET VT-1040-R EXTENSION

TOWN OF WHITINGHAM

READSBORO-WILMINGTON ROAD ~

STANDARD SHEET S-28 APPROVED BY THE CHIEF ENGINEER
ON JULY 11 1933.
STANDARD SHEET S-31 APPROVED BY THE CHIEF ENGINEER
ON JULY 25 1934.

BEGINNING AT THE END OF P.W.A. DOCKET 1040-R,
AND EXTENDING NORTHERLY 0.494 MI. ~
LENGTH OF EXTENSION=2,611.9=0.494 MI.

ROUTE: VT100
PROJECT PWA VT 1040 R EXT
DATE: 05/24/1937
PIN: COR 601

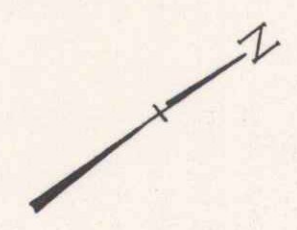
mp3.32 - mp3.82

RIGHT-OF-WAY DIVISION
TOWN FILE
PERPETUAL
Town of Whitingham
(To Be Returned To R.O.W. Division)

ESTIMATED QUANTITIES

Correct
A. J. 1937
C. O. [Signature]
Road Engineer

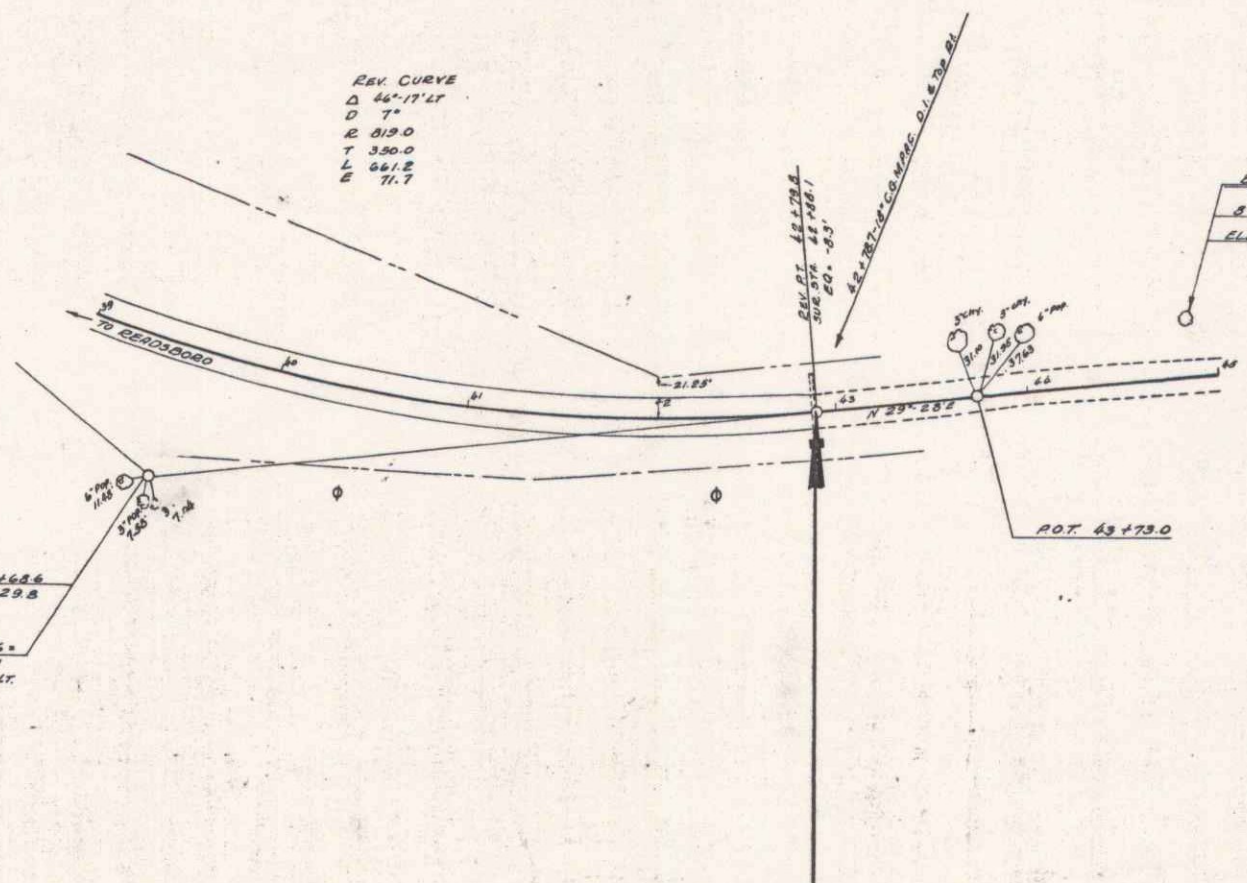
P.W.A. No. 1040-R (EXT) Filed
Series Docket
Sheet 1 of 18 Sheets



REV. CURVE
 Δ 44° 17' 11"
 D 31'
 E 319.0
 T 300.0
 L 66 1/2'
 T 7.7

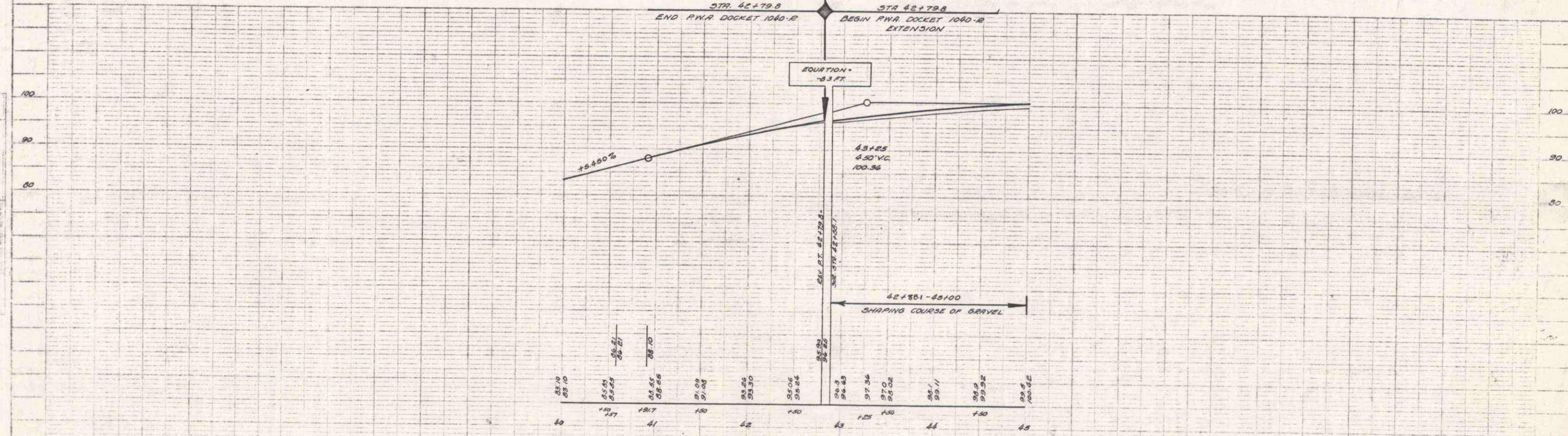
REV. PI 39+168.6
 39+22.8
 SUB. PI 39+168.6
 39+22.8
 Δ 44° 17' 11"
 D 31'

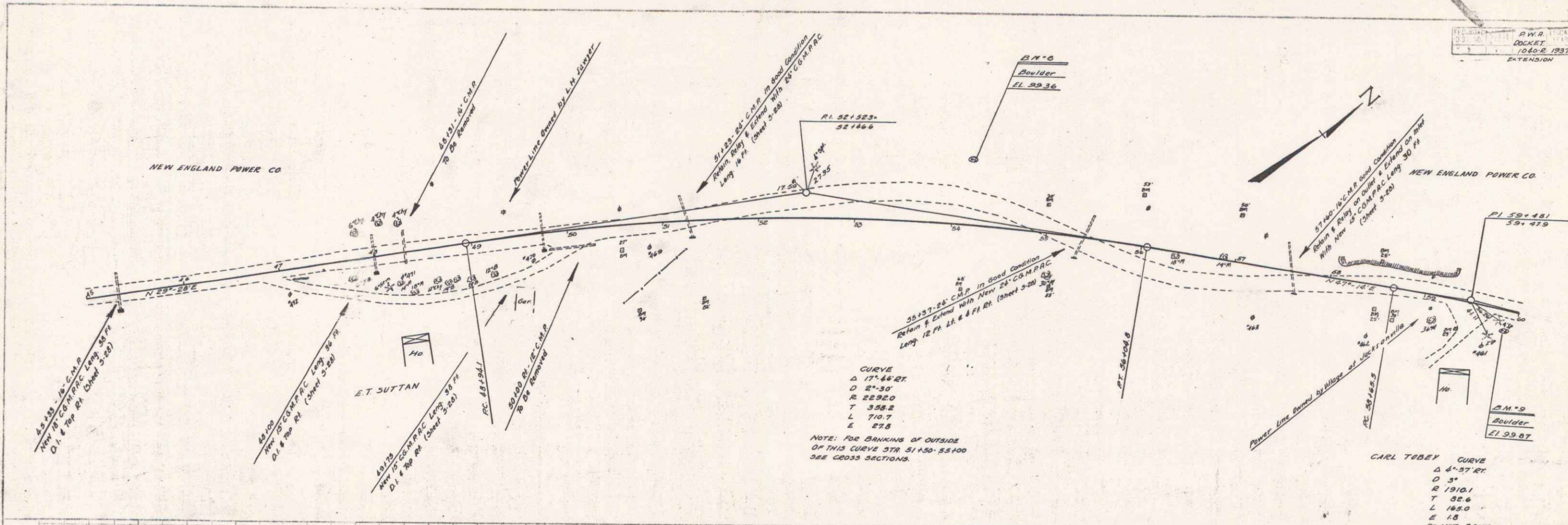
B.M. - 7
 5" POPLAR
 ELEV. 98.90



STA. 42+79.8
 END PWA DOCKET 1040-E
 STA. 42+79.8
 BEGIN PWA DOCKET 1040-E
 EXTENSION

ELEVATION
 -0.3 FT



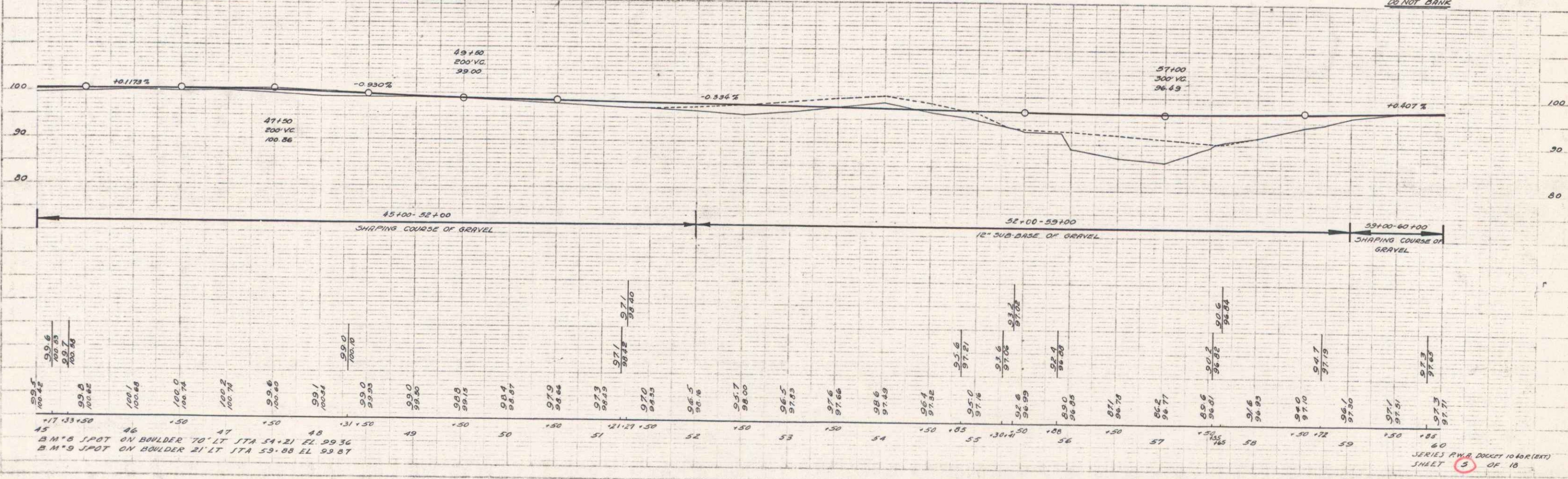


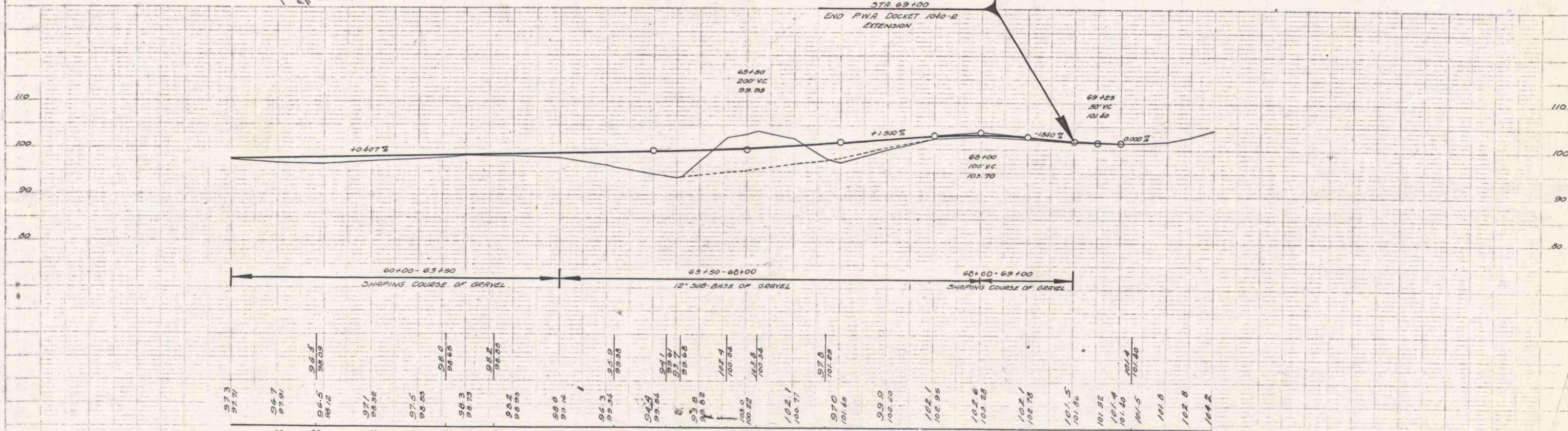
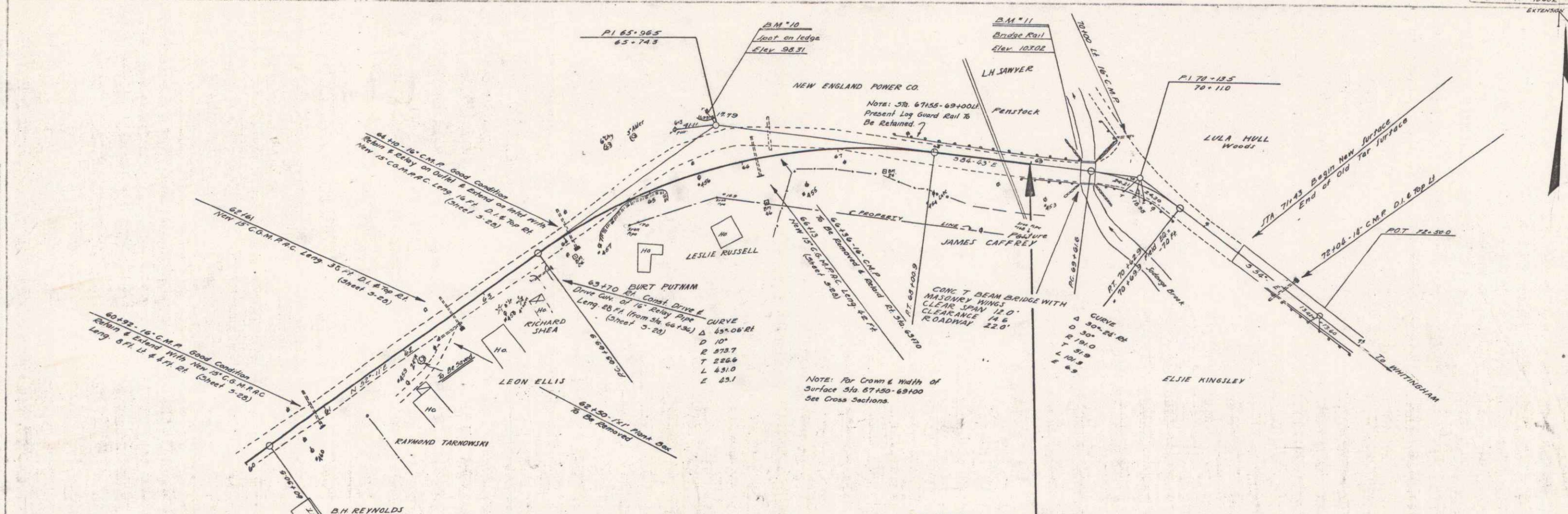
CURVE
 Δ 17° 44' 21"
 D 2° 30'
 R 2282.0
 T 358.2
 L 710.7
 E 27.8

NOTE: FOR BANKING OF OUTSIDE
 OF THIS CURVE STR 51+30-55+00
 SEE CROSS SECTIONS.

CARL TEBBY CURVE
 Δ 4° 27' 21"
 D 3°
 R 1910.1
 T 32.6
 L 188.0
 E 1.8

DO NOT BANK



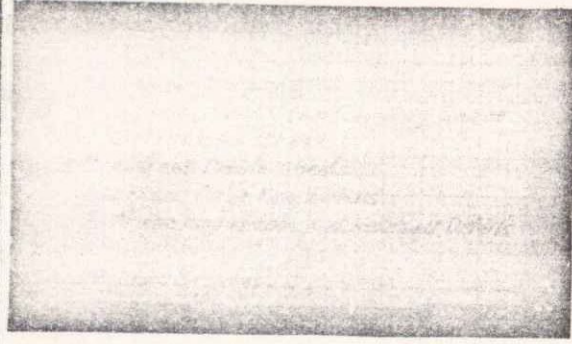


60	61	62	63	64	65	66	67	68	69	70	71	72	73
97.7	97.9	98.5	98.5	98.7	99.0	99.7	100.0	100.2	100.5	101.0	101.5	101.8	102.2
97.7	97.9	98.5	98.5	98.7	99.0	99.7	100.0	100.2	100.5	101.0	101.5	101.8	102.2

B.M. 10 SPOT ON LEDGE 55' AT STA 65+00 EL. 98.31
 B.M. 11 BRIDGE RAIL 10' LT STA 69+50 EL. 103.02

4

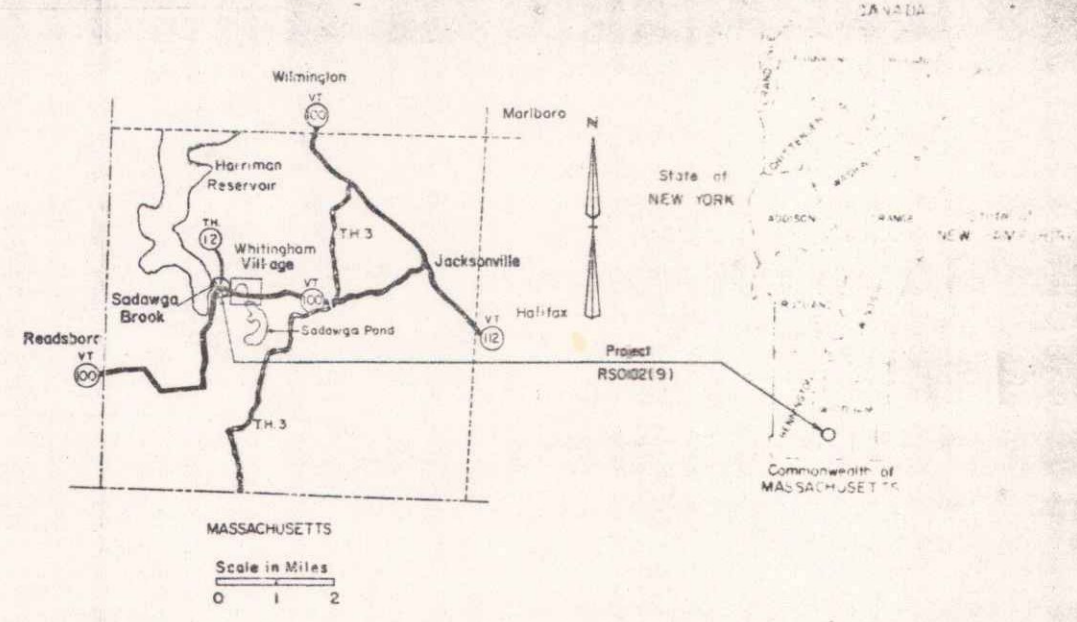
INDEX OF SHEETS



STATE OF VERMONT AGENCY OF TRANSPORTATION



PROPOSED IMPROVEMENT TOWN OF WHITINGHAM COUNTY OF WINDHAM VT. RTE. 100 (E.A.S.)



R.O.W. PLANS

Beginning at a point on Vt. Rte. 100 approximately 3.757 miles Easterly from the Readsboro-Whitingham Town Line and extending 0.096 mile Easterly.

Length of Project 0.096 Mile = 505 Feet

PROJECT DESCRIPTION
INSTALLATION OF A 120" CORRUGATED GALVANIZED METAL PLATE PIPE 0.130 GAUGE,
AND REALIGNING EXISTING 12" CURVE TO A 9°30' CURVE.
LENGTH OF R.O.W. PROJECT 0.175 MILE = 925 FEET

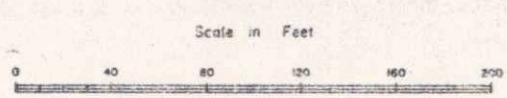
1962 AADT	=	580
1982 DHV	=	79
2002AADT	=	795
2002DHV	=	113
D	=	60%
T	=	5%
V	=	40 MPH

MP 3.71
BEGIN R.O.W. PROJECT
RS 0102(9) STA. 195+75

*DATE: 03/05/1982
PH: 00R602*
MP 3.88
END R.O.W. PROJECT
RS 0102(9) STA. 205+00

- CONVENTIONAL SIGNS
- COUNTY LINE
 - TOWN LINE
 - LIMITS OF ACCESS
 - POINT OF ACCESS
 - FENCE LINE
 - STONE WALL
 - TRAVELED WAY
 - GUARD RAIL
 - RAILROAD
 - SURVEY LINE
 - CULVERT
 - POWER POLE
 - TELEPHONE POLE
 - TREES
 - CONTROL OF ACCESS
 - PROPERTY LINE
 - R.O.W. TAKING LINE
 - SLOPE RIGHTS
 - TOP OF CUT
 - TOE OF SLOPE

DATUM
VERTICAL: AVG. 1929
HORIZONTAL: N/A



PROJECT PROCESSED UNDER
SECONDARY ROAD PLAN

These plans are subject to such engineering changes as may be required by the Federal Highway Administration or the Director of Engineering & Construction. Construction is to be in accordance with the plans and the Standard Specifications for Highways and Bridge Construction, Third Edition, 1976, as approved by the Vermont Legislature in October 1976. The project including all subsequent plans shall be reviewed by the State Highway Department and approved by the State Highway Engineer.

Director of Engineering and Construction

APPROVED: *[Signature]*
CHIEF, PROPERTY ADMINISTRATION
DATE: *3-5-82*

RS 0102(9)
SHEET 1 OF 6

REMOVAL & DISPOSAL OF EXISTING GUARD RAIL
 REV. 201+58 ~ 201+54 RT
 REV. 201+69 ~ 201+71 RT
 REV. 200+95 ~ 201+48 LT
 REV. 201+65 ~ TH 12 11+45 LT

GUARD RAIL STD. ST. BEAM WOOD POSTS, TYPE II
 VT. RTE 100 REV. 200+80 ~ REV. 204+00 RT.
 VT. RTE 100 REV. 200+80 ~ TH 12 11+45 LT

CONSTRUCT CHANNEL W/STONE FILL TYPE I
 TH 12 11+00 ~ 11+45 ET

STONE FILL TYPE II
 VT. RTE 100 203+20 ~ 204+60

CONSTRUCT APPROACH
 REV. 201+67 LT.

VERT. CURVE DATA

Δ	31.08' RT
D	12'
R	477.47'
T	132.6'
L	258.6'
E	18.1'

Existing Bridge Data
 Clear Height 16.5'
 Clear Span 12.0'
 Total Width 24.0'
 Width Inside Conc. G.R. 22.2'

TBM # 9
 51R-2'0" VB
 ELEV 1529.85

Trk. POT 200+75.0
 N 1/4 Mile Rd 0+00.0
 Δ = 159° 08' 30" RT

TH 12 CURVE DATA

Δ	471.45' LT
D	05'
R	67.41'
T	23.84'
L	6.31'
E	34.15'

Do Not Bank

Rev. Vt. 100 Curve Data

Δ	76'-02"-00" RA
D	7'-30"
R	603.11'
T	471.49'
L	800.35'
E	142.42'
STL	142.63'
Bank	0.080%

REMOVAL OF ROAD SURFACE TO BE PAID AS COMMON EXCAVATION
 Rev. 200+96 ~ 202+22

END ROW PROJECT RS 0102(9) STA. 205+00

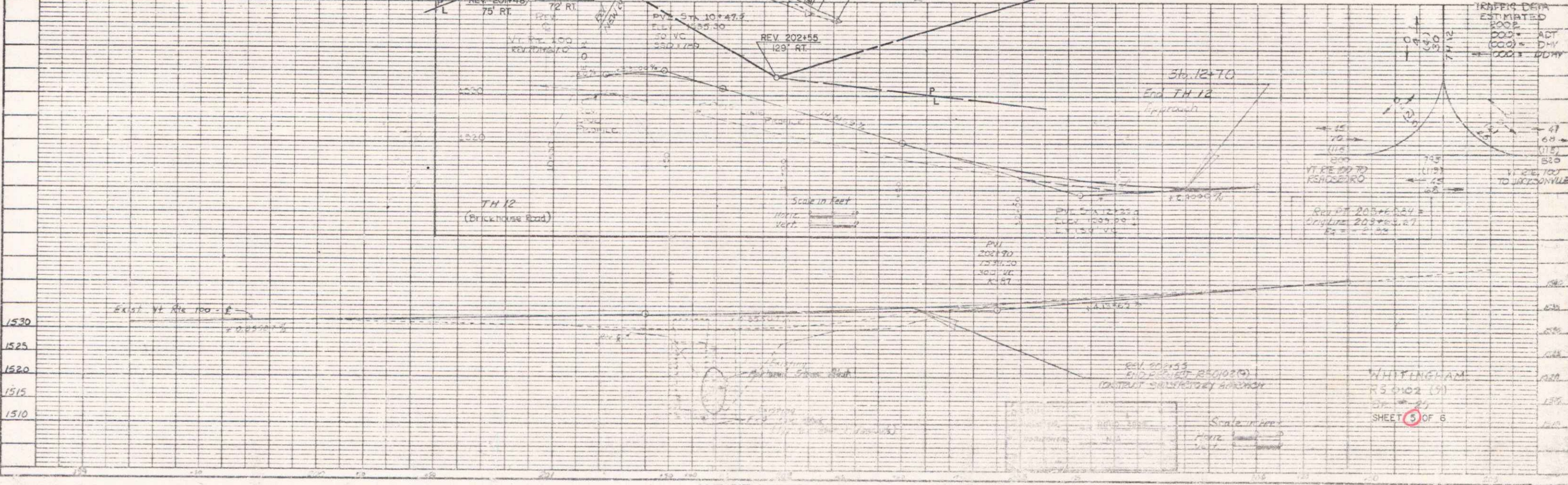
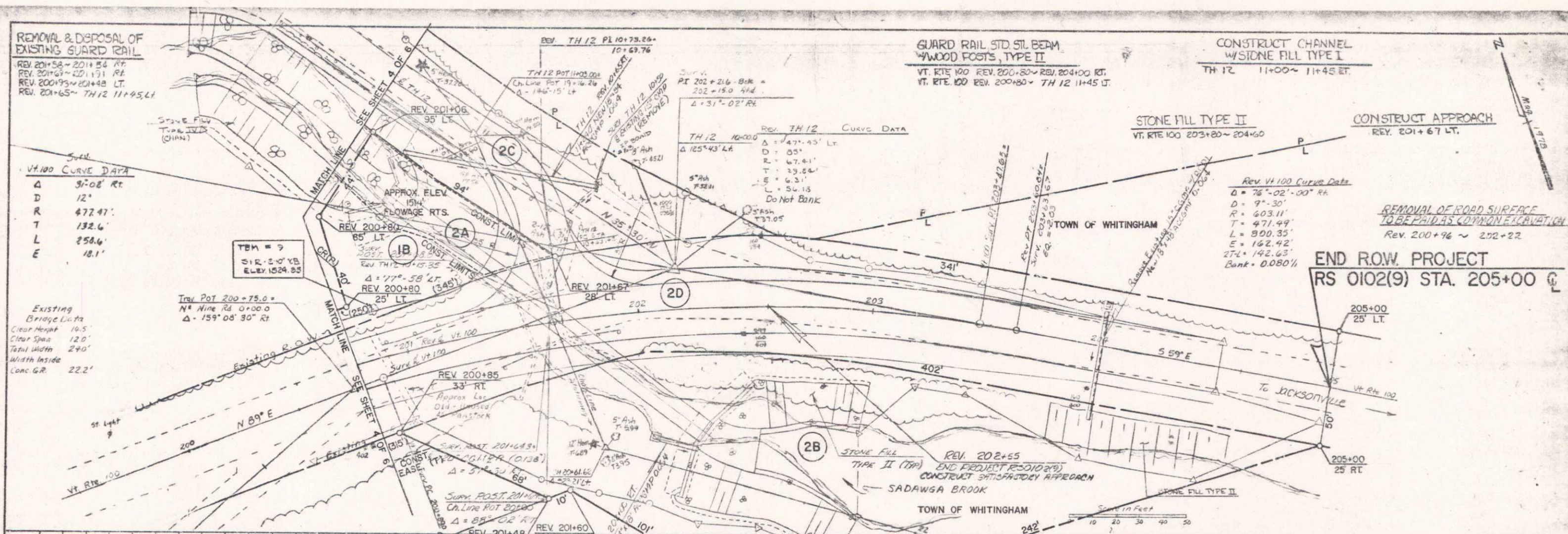


PLATE NO.

1	2	3	4	5	6	7	8	9	10
---	---	---	---	---	---	---	---	---	----

PROFILE

1	2	3	4	5	6	7	8	9	10
---	---	---	---	---	---	---	---	---	----

PLATE NO. PROFILE

WHITINGHAM
 RS 0102(9)
 SHEET 5 OF 6