

INDEX OF SHEETS

SHEET NO. 1	TITLE PAGE
" 2	TYPICAL CROSS-SECTION OF IMPROVEMENT
" 3	BANKING AND WIDENING TABLES
" 4-8	PLAN AND PROFILE SHEETS
" 9	STANDARD SHEET 528; PIPE CULVERTS
" 10	" " 531; DOX CULVERTS
" 11	" " 530; GUARD RAIL
" 12	" " 531; BOUNDARY MARKERS
" 13	" " 540; BARRICADE SIGNS & LIGHTS
" 14-27	CROSS-SECTIONS

Standard sheet 528 approved by the Chief Engineer on July 11, 1933.  
 Standard sheet 530 approved by the Chief Engineer on Aug 15, 1933.  
 Standard sheet 531 approved by the Chief Engineer on July 25, 1934.

STATE OF VERMONT  
 STATE HIGHWAY DEPARTMENT

PLAN AND PROFILE OF PROPOSED  
 STATE HIGHWAY

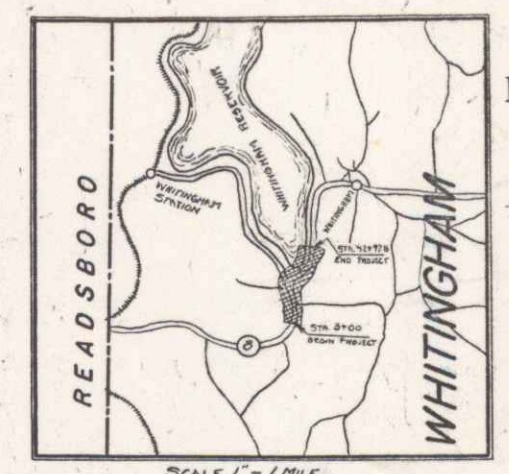
TOWN OF WHITINGHAM

READSBORO-WILMINGTON ROAD

BEGINNING AT A POINT IN FRONT OF THE BARN OF GEO. BALLOU,  
 AND EXTENDING NORTHERLY 0.753 MILES.

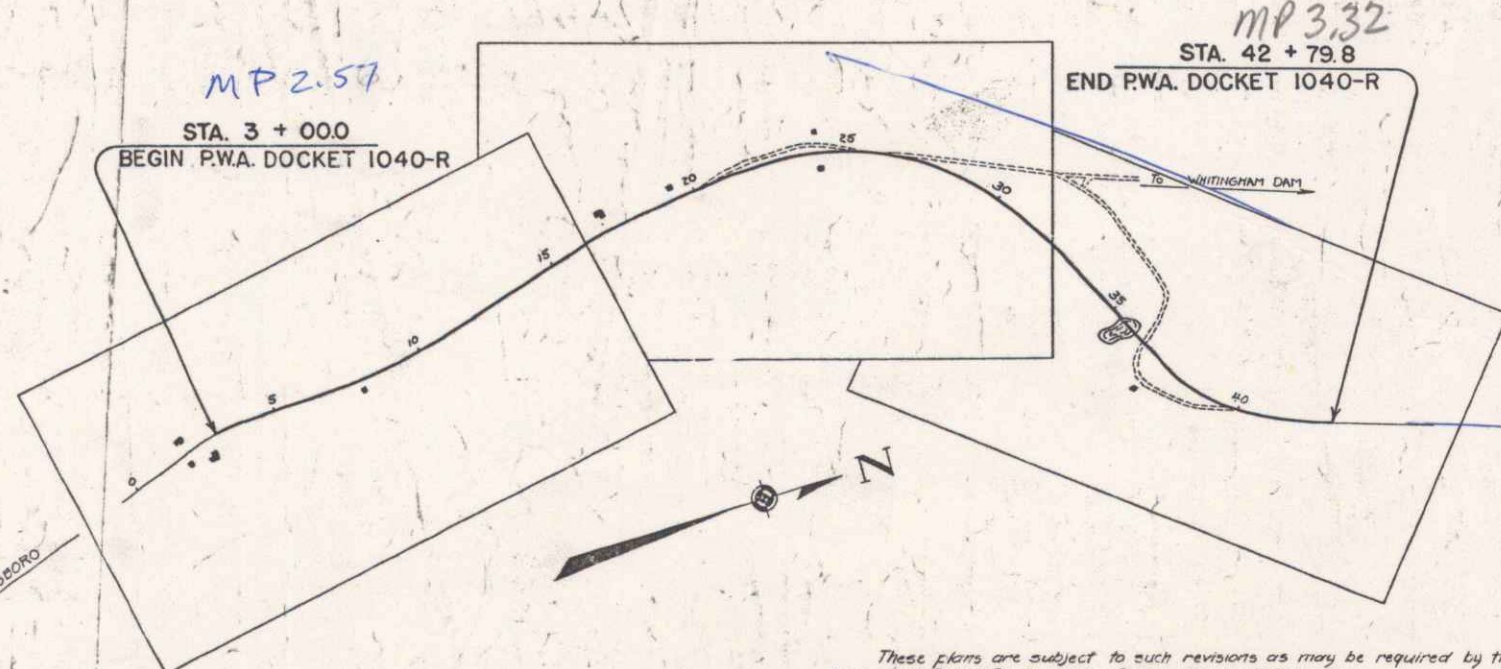
LENGTH OF PROJECT 397.76 FT. = 0.753 MILES

NO.	DIST.	STATE	DATE	PROJECT	SHEET	TOTAL
9	VT.	1040-R	1936	1	27	

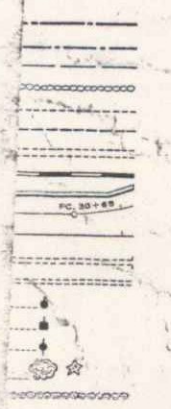


APPROVED August 31, 1935  
*James Farmington* SELECTMEN  
 TOWN OF WHITINGHAM

RIGHT-OF-WAY DIVISION  
 TOWN FILE  
 PERPETUAL  
 Town of VT 100  
 (To Be Returned To R.O.W. Division)  
 APPROVED: AUGUST 31, 1935  
*H. S. Sargent*  
 COMMISSIONER OF HIGHWAYS  
 SUBMITTED BY ORDER OF THE STATE HIGHWAY BOARD



CONVENTIONAL SIGNS



CURVE DATA

DEFLECTION ANGLE	Δ
DEGREE OF CURVE	D
RADIUS OF CURVE	R
TANGENT DISTANCE	T
LENGTH OF CURVE	L
EXTERNAL DISTANCE	E
POINT OF INTERSECTION	P. I.
POINT OF CURVE	P. C.
POINT OF TANGENT	P. T.
POINT ON TANGENT	P. O. T.

SCALES

TITLE	1" = 300'
TYPICAL	1" = 2'
PLAN	1" = 50'
PROFILE	1" = 10'
CROSS-SECTIONS	1" = 3'

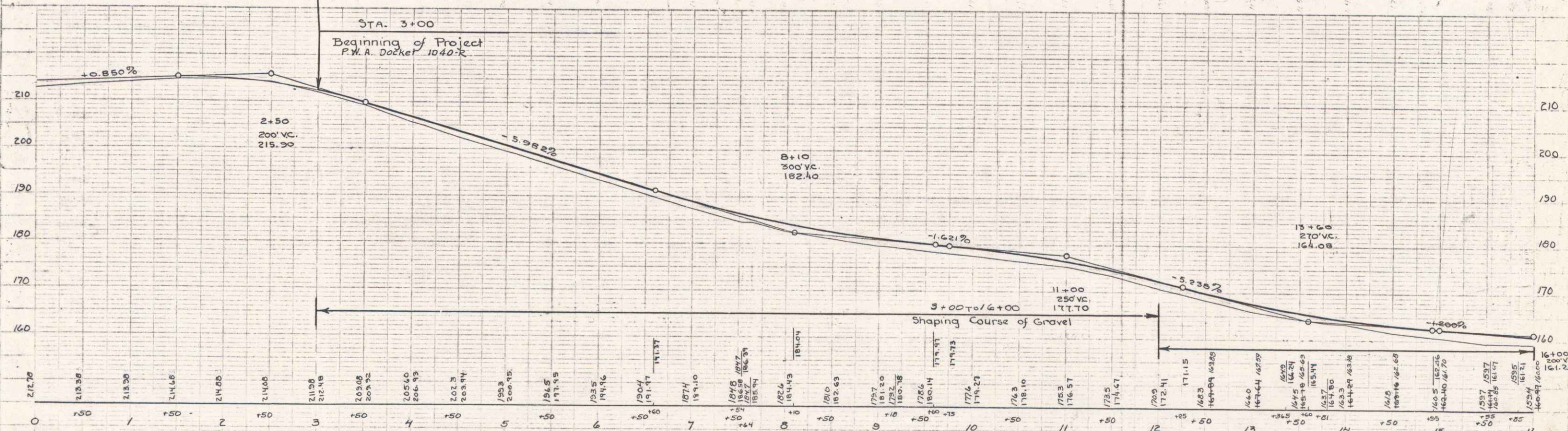
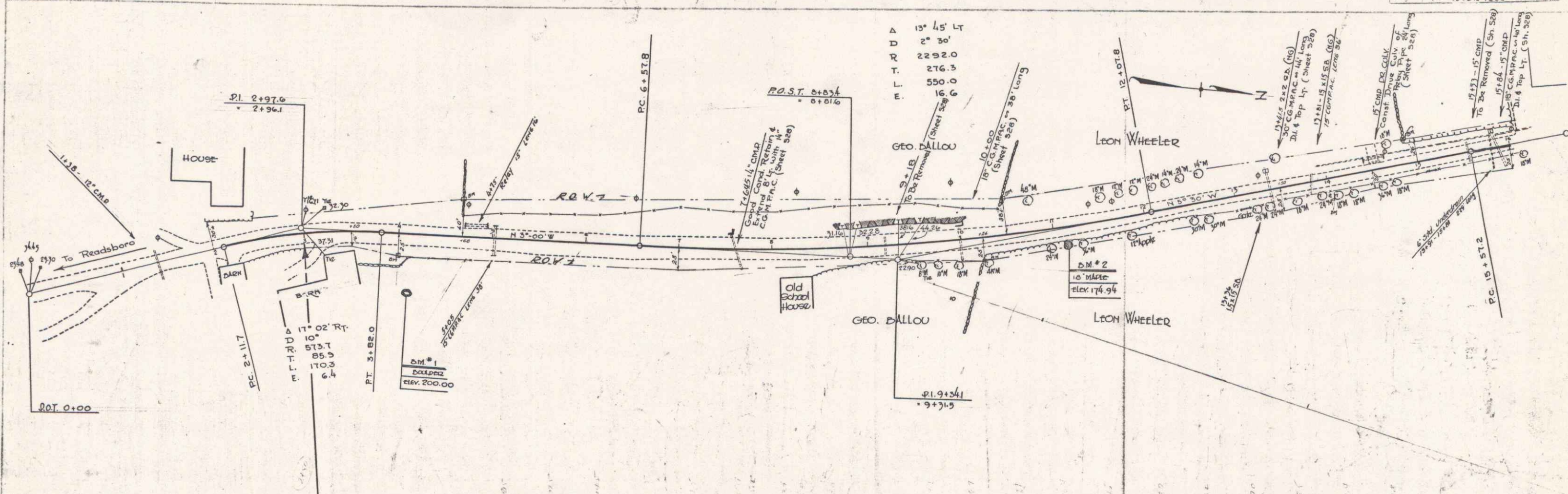
These plans are subject to such revisions as may be required by the Bureau of Public Roads or the Commissioner of Highways. Construction is to be carried on in accordance with the plans and Standard Road and Bridge Specifications of 1930 including all subsequent approved revisions and such revised specifications and special provisions as are submitted with the plans.

PROJECT: PWA 1040-R  
 DATE: 108/31/1933  
 ROUTE: VT 100  
 PIN: 00RE00

RECOMMENDED  
 DISTRICT ENGINEER BUREAU OF PUBLIC ROADS  
 RECOMMENDED FOR APPROVAL  
 CHIEF ENGINEER BUREAU OF PUBLIC ROADS  
 APPROVED  
 DIRECTOR - BUREAU OF PUBLIC ROADS

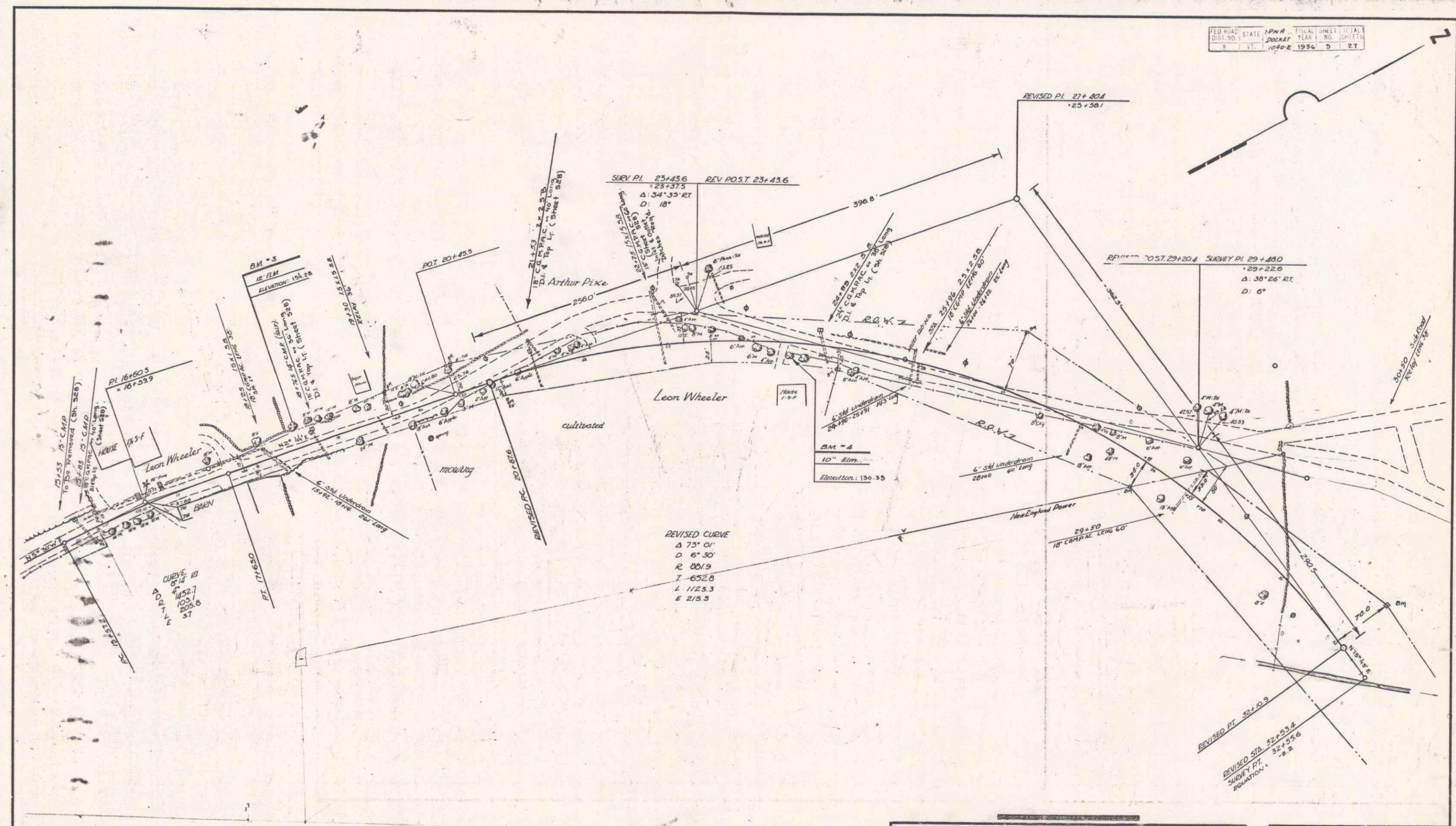
CORRECT: *James Farmington*  
 ROAD ENGINEER  
 SERIES NO. 1040-R  
 SHEET 1 OF 27

DIST. #1 PLANS

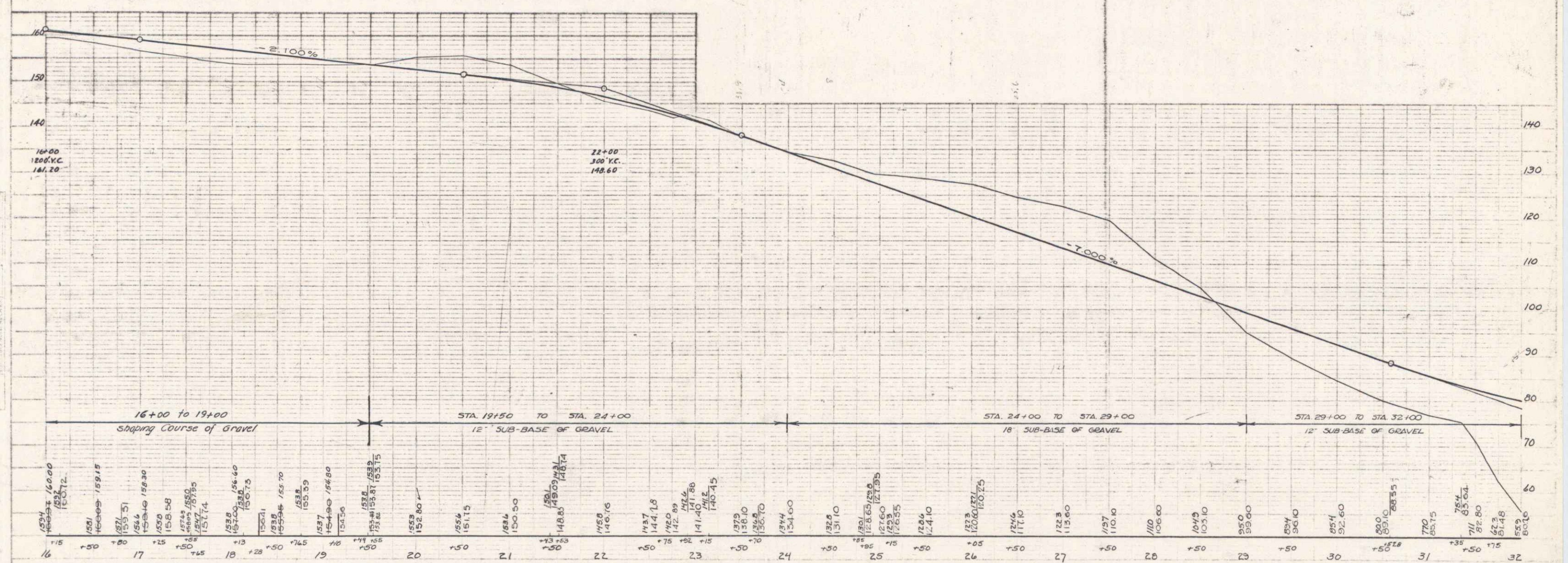


BM #1; Paint spot on Boulder 40 Rt. Sta 4+10 El. 200.0  
 BM #2; Spike in side of 10 Maple 17 Rt. Sta 11+12 El. 174.94

FED. ROAD DIST. NO.	STATE	DOCKET	YEAR	SHEET NO.	TOTAL SHEETS
	VT.	1040-R	1934	5	27



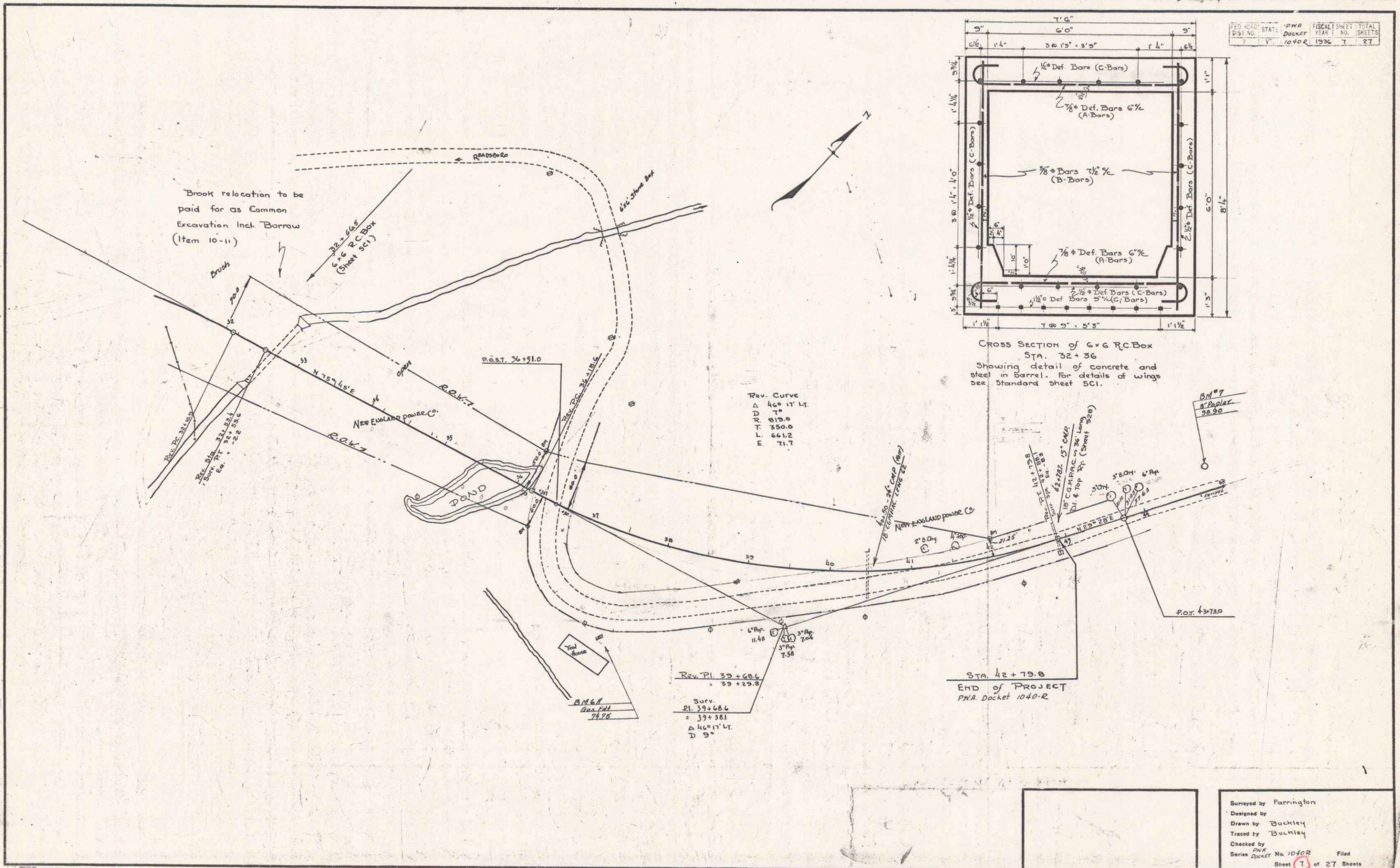
Surveyed by H. W. BROWN  
 Designed by G. B. CROLEY  
 Drawn by G. B. CROLEY  
 Traced by G. B. CROLEY  
 Checked by G. B. CROLEY  
 Series P.M. No. 1040-R Filed  
 Docket Sheet 5 of 27 Sheets



BM 3 SPIKE IN FOOT OF 12" ELM. 19' LT. OF STA. 16+31. ELEVATION: 154.25.  
 BM 4 SPIKE IN FOOT OF 16" ELM. 20.5' RT. OF STA. 24+52. ELEVATION: 130.35

C. LINE PEOPLE

4

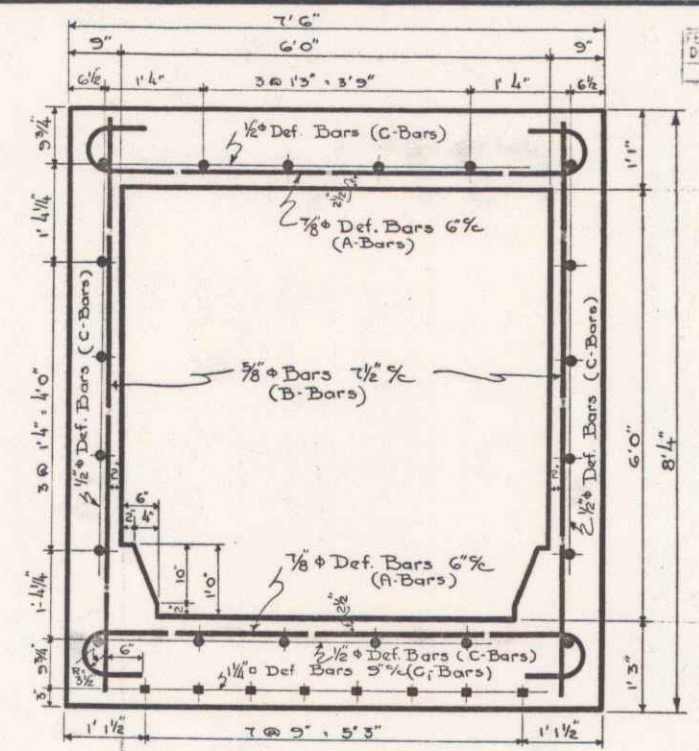


Brook relocation to be paid for as Common Excavation Incl. Borrow (Item 10-11)

Rev. Curve  
 $\Delta$  46° 17' Lt.  
 D 9°  
 R 915.0  
 T 350.0  
 L 661.2  
 E 71.7

Rev. Pl 39+68.6  
 39+29.8  
 Surv.  
 Pl 39+68.6  
 = 39+381  
 $\Delta$  46° 17' Lt.  
 D 9°

STA. 42+79.8  
 END of PROJECT  
 PNA Docket 1040-R

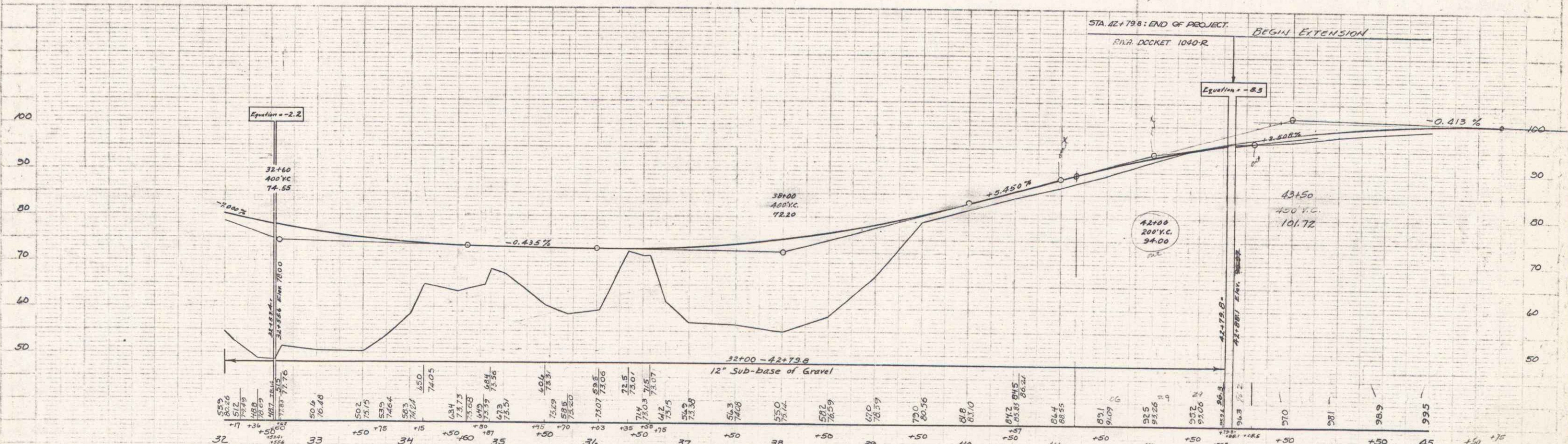


CROSS SECTION of 6x6 R.C. Box  
 STA. 32+36  
 Showing detail of concrete and steel in Barrel. For details of wings see Standard sheet 5C1.

NO.	STATE	PNA	FISCAL YEAR	SHEET NO.	TOTAL SHEETS
1040-R	Vt.	1936	T	27	

Surveyed by Farrington  
 Designed by  
 Drawn by Daultley  
 Traced by Daultley  
 Checked by  
 Series PNA No. 1040-R Filed  
 Docket Sheet 1 of 27 Sheets

PLAN  
SITE PLAN  
DATE



32+00 - 42+73.6  
12" Sub-base of Gravel

Series PWA DOCKET 1040-R  
Sheet 8 of 27

6