

**INDEX OF SHEETS**

SHEET NO. 1	TITLE PAGE
" 2	TYPICAL CROSS-SECTION OF IMPROVEMENT
" 3	DETAILS OF CONSTRUCTION
4, 5	PLAN AND PROFILE SHEETS
6	STANDARD STRUCTURE SHEET 5-28 PIPE CULVERTS
7	" " 5-30 GUARD RAIL
8	SLB 20 N°CR
9	STANDARD STRUCTURE SHEET 5B-11 SIGNS, LIGHTS, BARRICADES
10, 16	CROSS SECTIONS

BITUMINOUS MACADAM SURFACE COURSE

Standard Sheet 5-28 Submitted to the Chief Engineer on May 16<sup>th</sup> 1933.  
Standard Sheet 5-30 Submitted to the Chief Engineer on Aug. 15<sup>th</sup> 1933.

STATE OF VERMONT  
STATE HIGHWAY DEPARTMENT

PLAN AND PROFILE OF PROPOSED  
STATE HIGHWAY

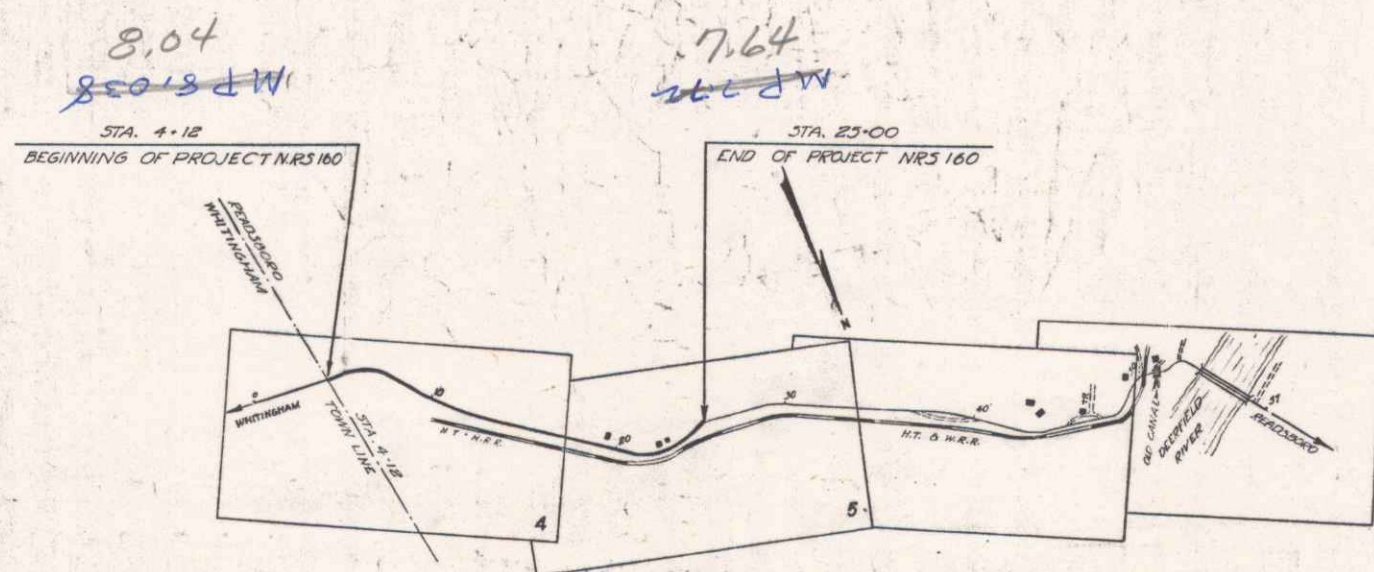
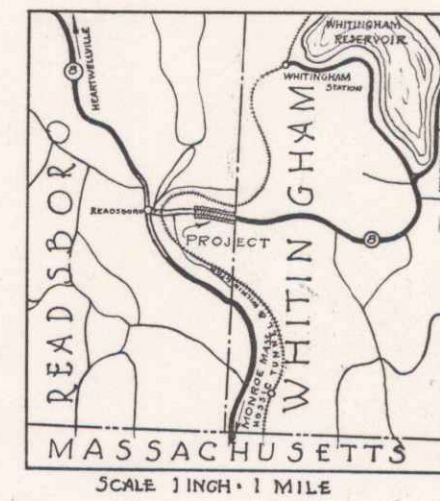
NATIONAL RECOVERY SECONDARY PROJECT

TOWN OF READSBORO  
WHITINGHAM-READSBORO ROAD.

FROM THE TOWN LINE NORTH WESTERLY  
0.395 MILES TO A POINT 250 FEET WEST  
FROM THE RESIDENCE OF EUGENE BIAnton.  
LENGTH OF PROJECT = 2085.7 FEET = 0.395 MILE.

FED. ROAD DIST. NO.	STATE	N.R.S. PROJ. NO.	FISCAL YEAR	SHEET NO.	TOTAL SHEETS
9	VT.	160	1933	1	16

(To Be Returned to R.O.W. Division)  
M.P. 8.038  
M.P. 8.04  
RIGHT-OF-WAY DIVISION



ROUTE VT 100  
PROJECT: NRS 160  
DATE: 11/25/1938  
PIN: 002549

APPROVED: Nov 25, 1938  
R. S. Stanger  
COMMISSIONER OF HIGHWAYS

SUBMITTED BY ORDER OF THE STATE HIGHWAY BOARD

**CONVENTIONAL SIGNS**

COUNTY LINE	GROUND ELEVATION
TOWN LINE	GRADE ELEVATION
FENCE LINE	
STONE WALL	
UNFENCED PROPERTY	
GUARD RAIL	
TRAVELED WAY	
RAILROAD	
RETAINING WALL	
CENTER LINE	
SURVEY LINE	
CULVERT	
DROP INLET	
TROLLEY POLE	
POWER POLE	
TELEPHONE POLE	
TREES	
HEDGE	

**CURVE DATA**

DEFLECTION ANGLE	Δ
DEGREE OF CURVE	D
RADIUS OF CURVE	R
TANGENT DISTANCE	T
LENGTH OF CURVE	L
EXTERNAL DISTANCE	E
POINT OF INTERSECTION	P. I.
POINT OF CURVE	P. C.
POINT OF TANGENT	P. T.
POINT ON TANGENT	P. O. T.

**SCALES**  
TITLE 1" = 500 FEET  
PLAN 1" = 30 "  
PROFILE HOR 1" = 30 "  
VERT 1" = 10 "  
CROSS SECTIONS 1" = 5 "

These plans are subject to such revisions as may be required by the Bureau of Public Roads or the Commissioner of Highways. Construction is to be carried on in accordance with the Standard Road and Bridge Specifications of 1930 with all subsequent approved revisions and such specifications and special provisions as are submitted with these plans.

RECOMMENDED: [Signature]  
DISTRICT ENGINEER BUREAU OF PUBLIC ROADS

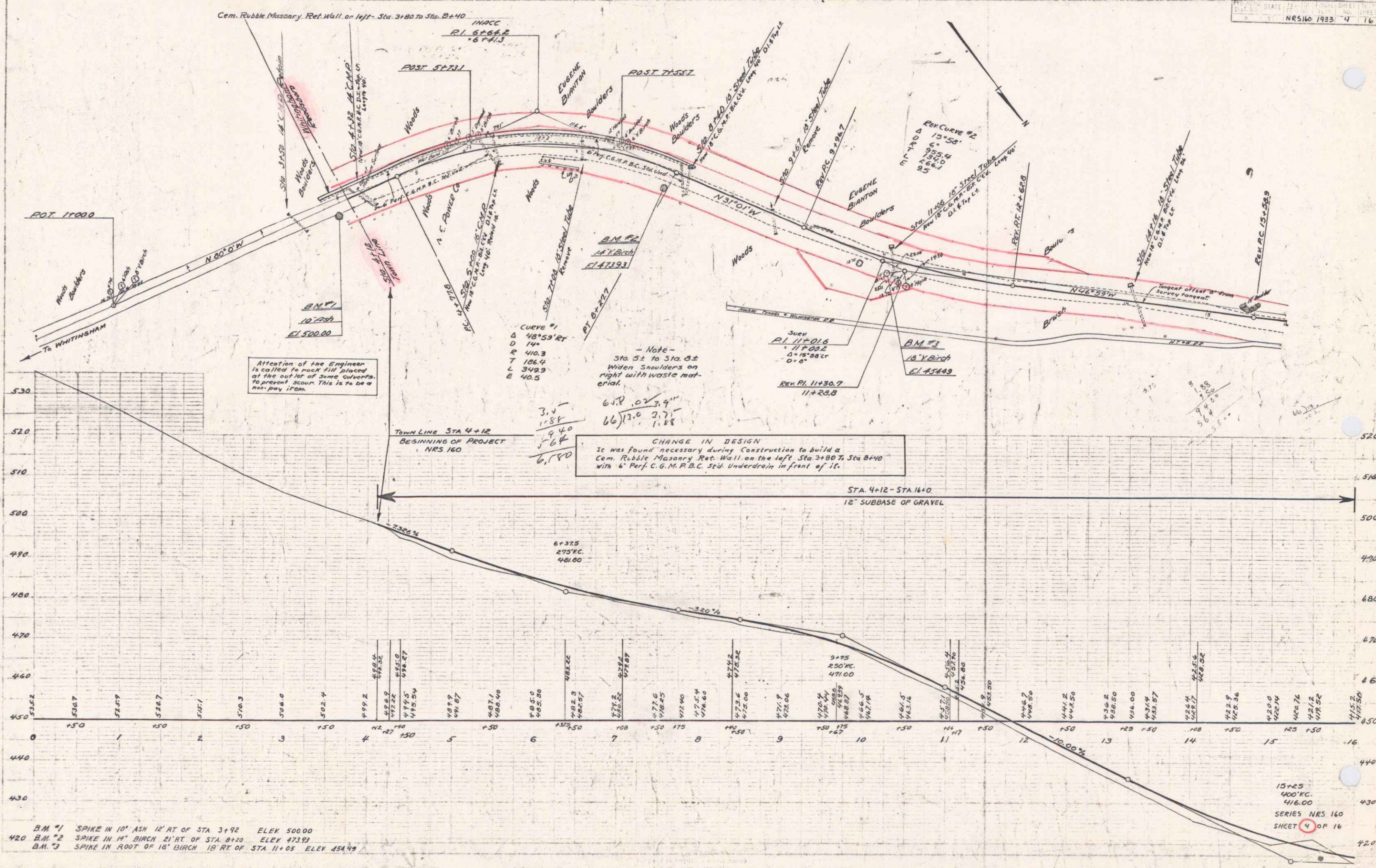
RECOMMENDED FOR APPROVAL: [Signature]  
CHIEF ENGINEER BUREAU OF PUBLIC ROADS

APPROVED: [Signature]  
DIRECTOR BUREAU OF PUBLIC ROADS

CORRECT: Nov 25, 1938  
R. S. Stanger  
ROAD ENGINEER

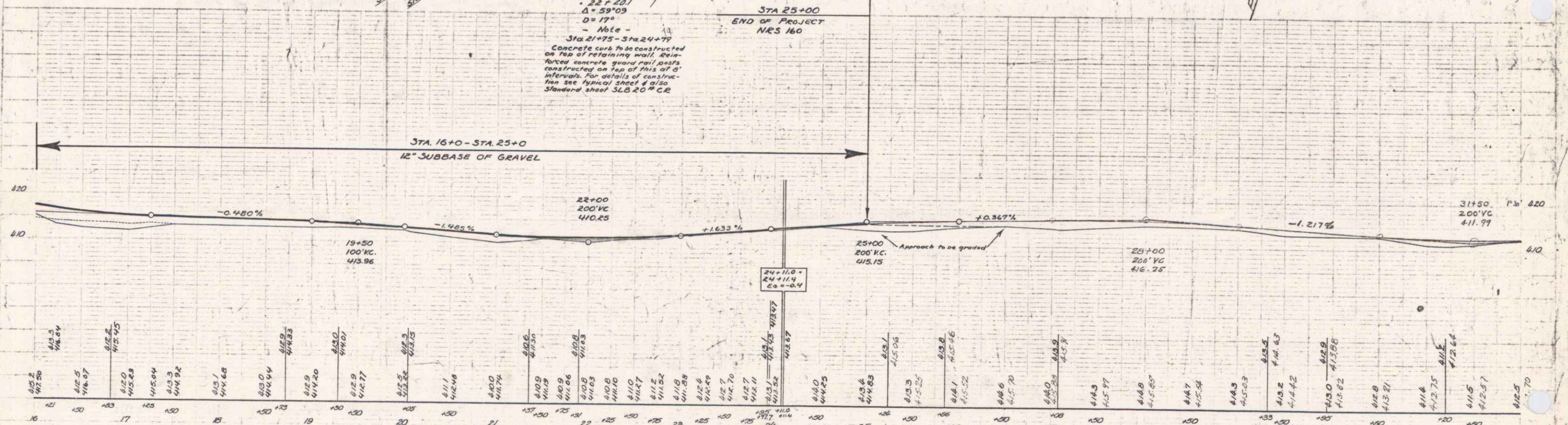
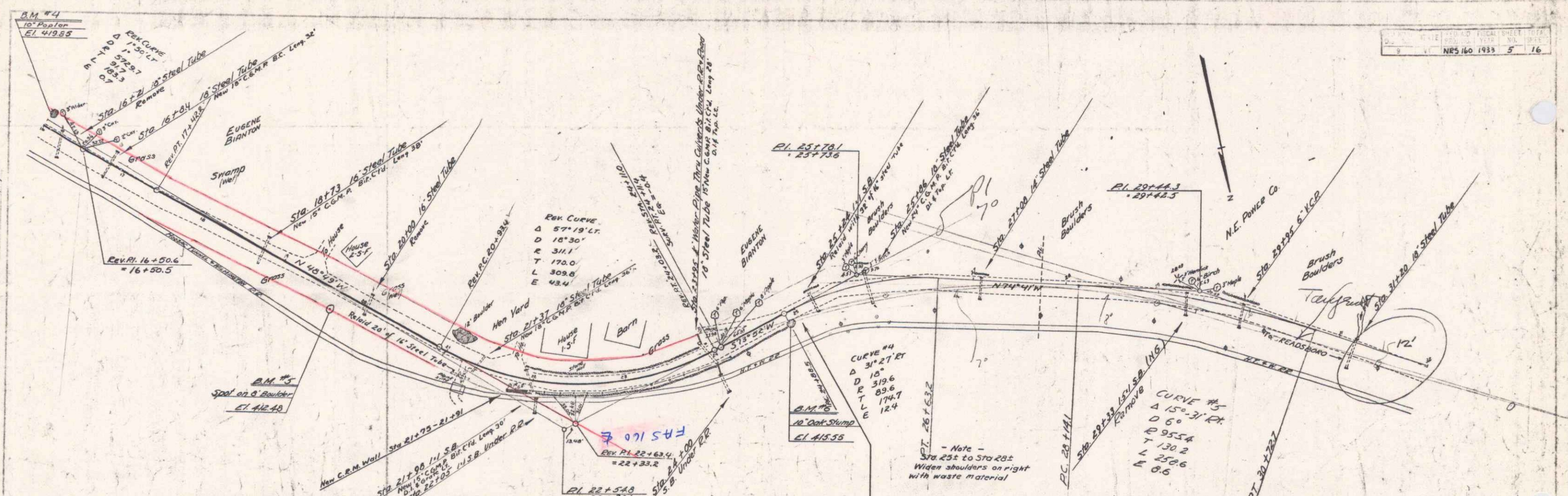
SERIES NRS 160 FILED  
SHEET 1 OF 16

DIST #1 PLANS



B.M. #1 SPIKE IN 10' ASH 12' RT OF STA 3+92 ELEV 500.00  
 B.M. #2 SPIKE IN 14' BIRCH 21' RT OF STA 4+20 ELEV 473.82  
 B.M. #3 SPIKE IN ROOT OF 18' BIRCH 18' RT OF STA 11+05 ELEV 454.49

15+25  
 400' VC  
 416.00  
 SERIES NRS 160  
 SHEET 4 OF 16

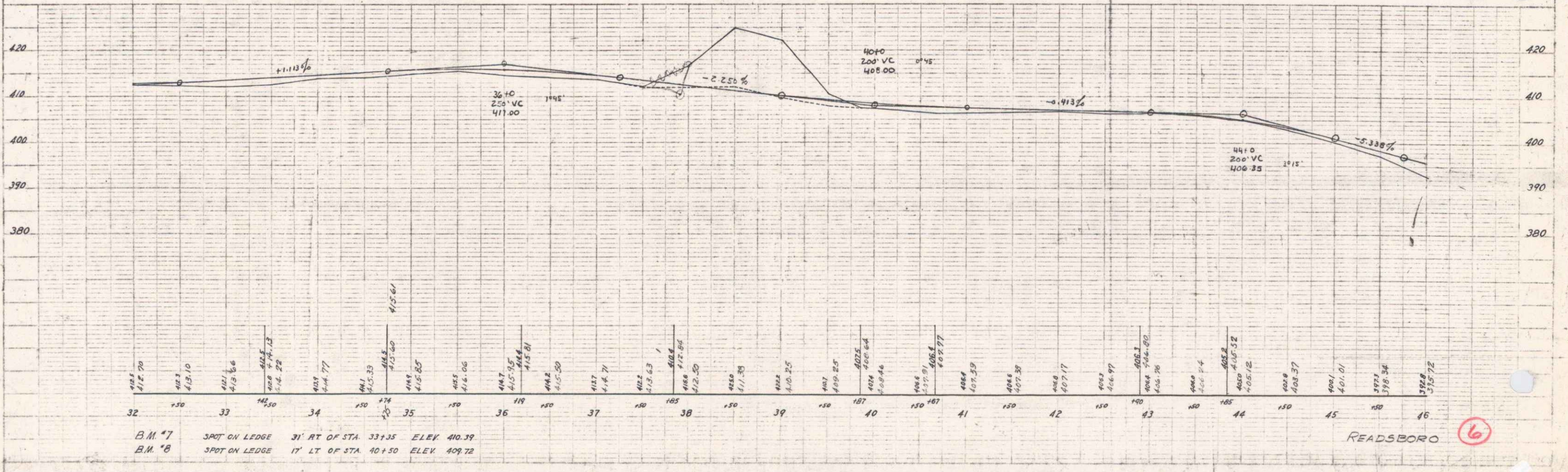
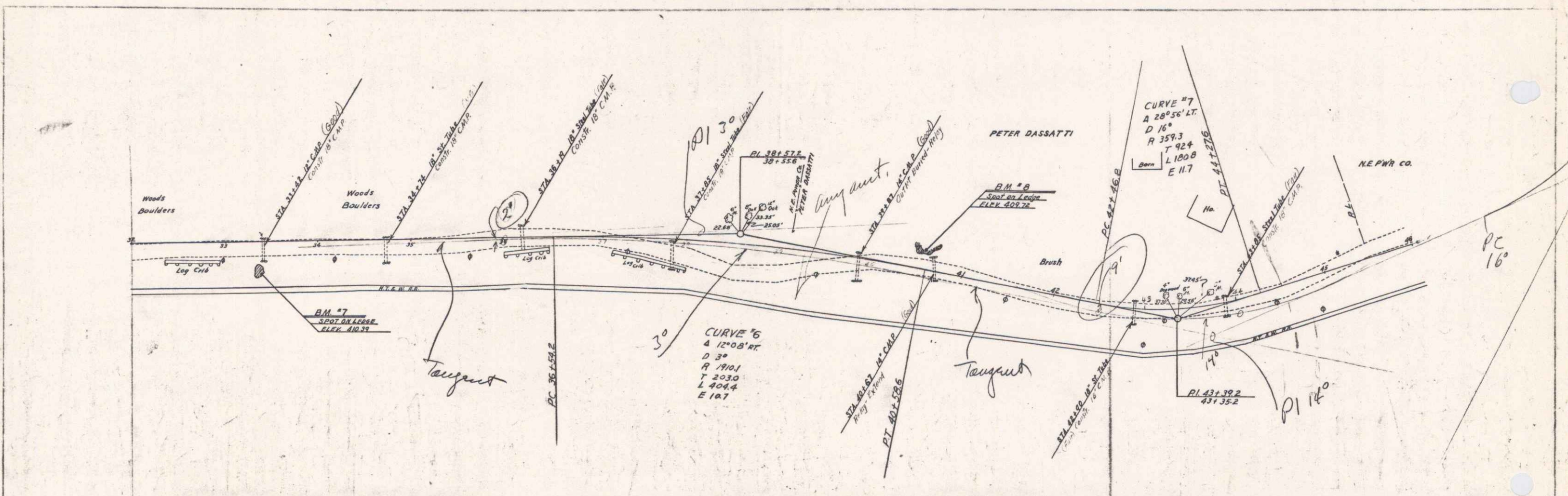


BM #4 SPIKE IN ROOT OF 10' POPLAR 11' LT. OF STA. 16+00 ELEV 419.55  
 BM #5 SPOT ON BOULDER 10' RT. OF STA. 19+70 ELEV 412.45  
 BM #6 SPIKE IN TOP OF 10' OAK STUMP 12' RT. OF STA. 24+90 ELEV 415.55

READSBORO  
 SERIES NRS NO 160  
 SHEET 5 OF 16

PLAN  
 BOUNDARIES  
 PITCHAM  
 CROSS  
 BIRCH  
 TRAIL  
 BIRCH  
 TRAIL

PROFILE  
 BOUNDARIES  
 PITCHAM  
 CROSS  
 BIRCH  
 TRAIL



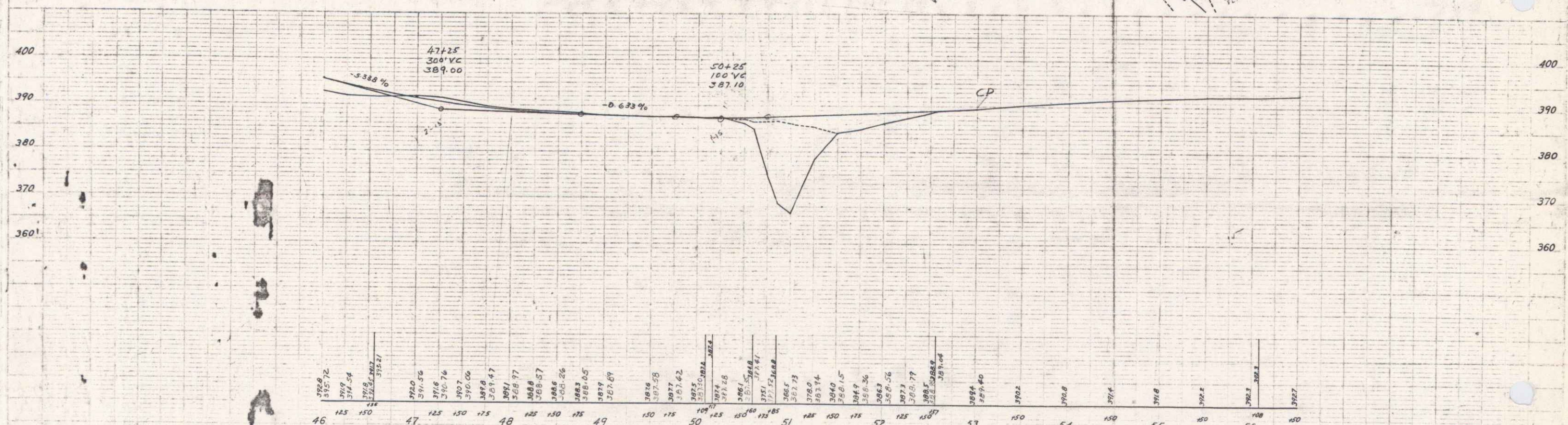
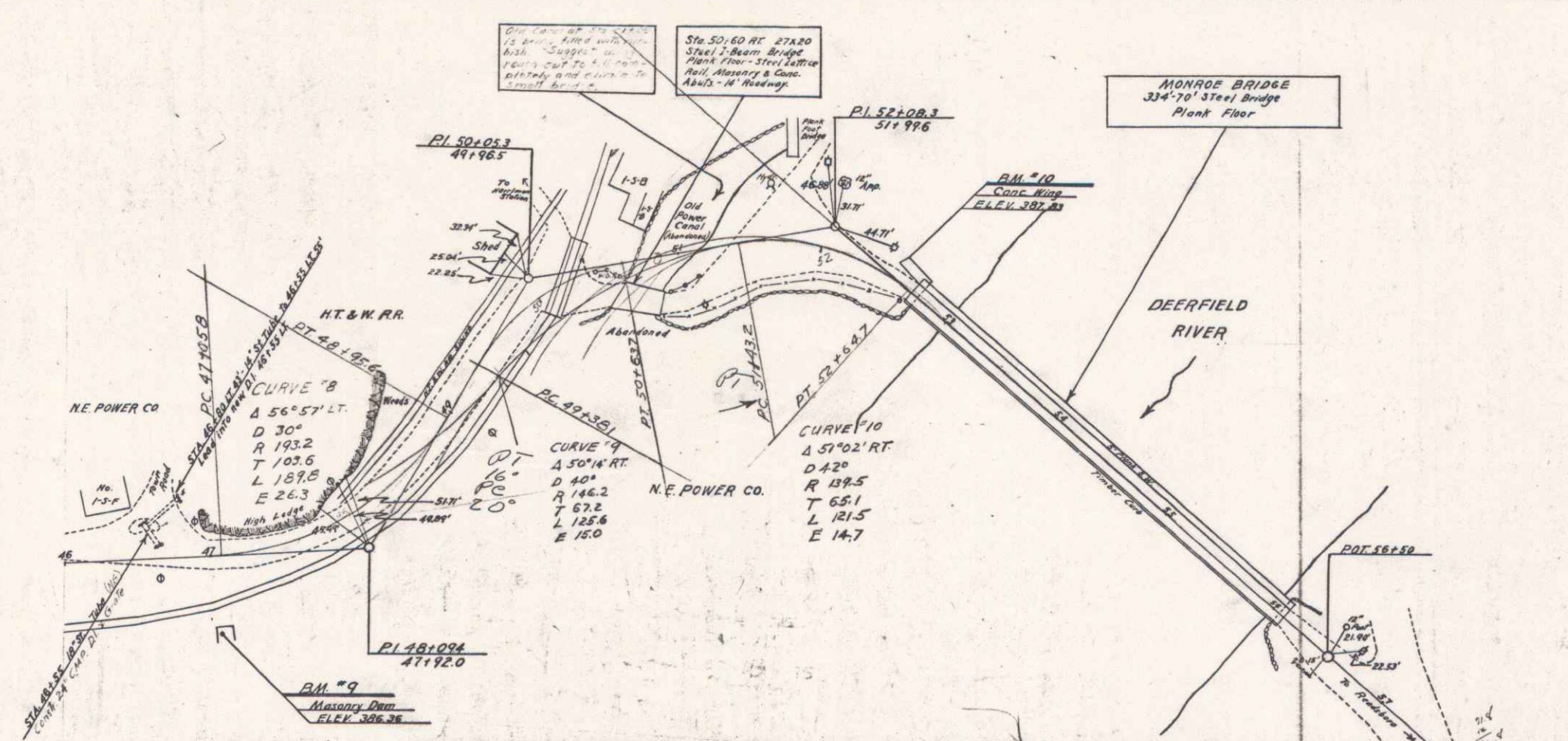
B.M. #7 SPOT ON LEDGE 31' RT OF STA 33+35 ELEV 410.39  
 B.M. #8 SPOT ON LEDGE 17' LT OF STA 40+50 ELEV 409.72

READSBORO 6

Readboro 4

PLAN  
 DIVISION  
 DATE

CURVE  
 DIVISION  
 DATE



B.M. #9 SPOT ON MASONRY WALL OF DAM 50' RT OF STA. 47+0 ELEV. 386.36  
 B.M. #10 SPOT ON CONCRETE WALL 19' LT OF STA. 52+52 ELEV. 387.83

7  
 READSBORO

5