

TWO CABLE GUARD RAIL Rt. 192.75-198.22 192.75-193.71
 CONSTRUCT DRIVE Lt. 189.25-200
 UNCLASSIFIED CHANNEL EXCAVATION Lt. 193.00-197.25
 STONE FILL FOR SLOPE PROTECTION (LIGHT TYPE) Lt. 193.00-197.50
 TREATED TIMBER CURB Lt. 192.75-197.25
 PAVED SHOULDER (ITEM 361-B) Lt. 192.75-197.25

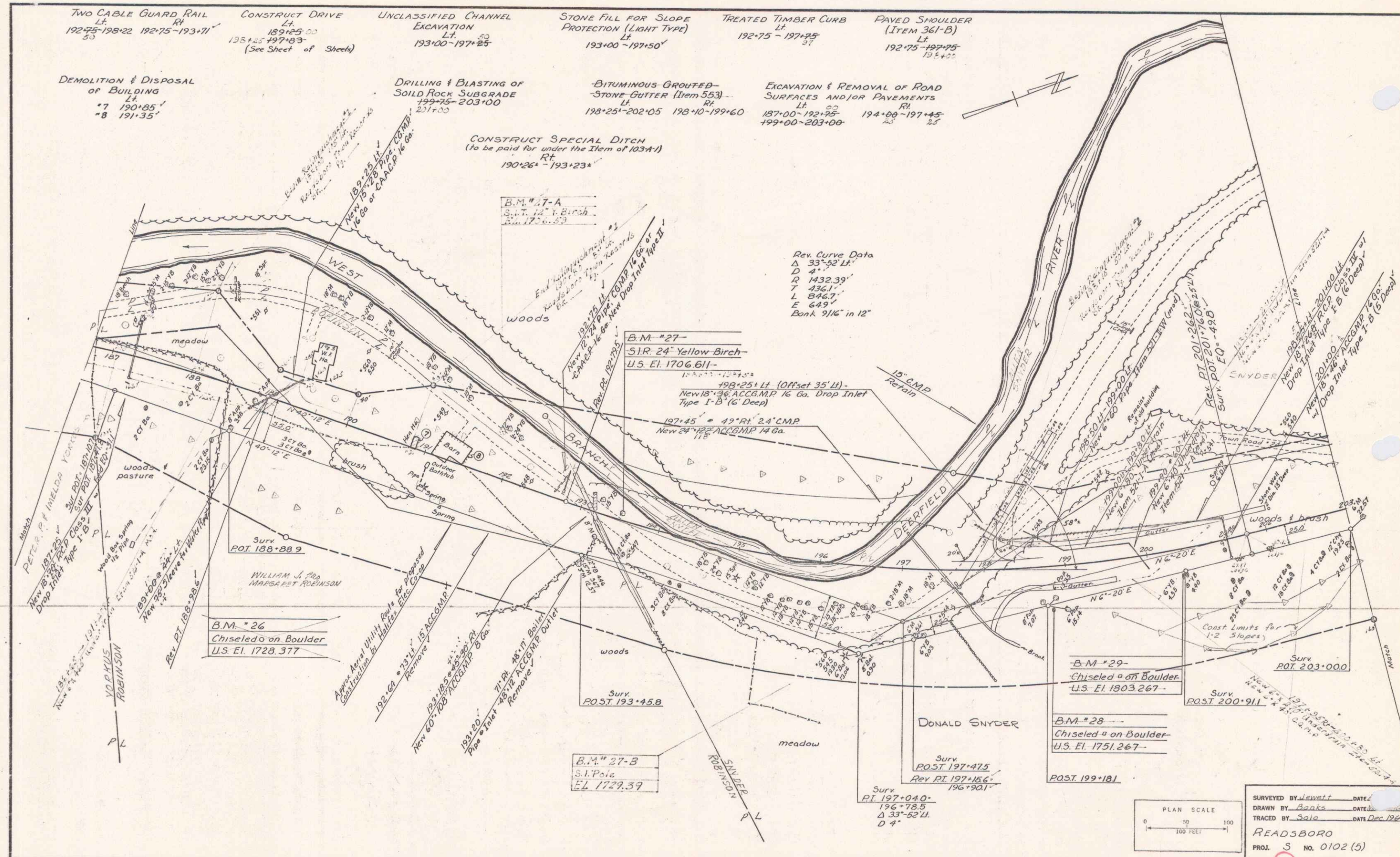
DEMOLITION & DISPOSAL OF BUILDING Lt.
 *7 190.85'
 *8 191.35'

DRILLING & BLASTING OF SOILD ROCK SUBGRADE
 199.25-203.00
 231+00

BITUMINOUS GROUTED-STONE GUTTER (Item 553)
 Lt. 198.25-202.05 198.10-199.60
 EXCAVATION & REMOVAL OF ROAD SURFACES AND/OR PAVEMENTS Lt. 187.00-192.25 194.00-197.45 199.00-203.00

CONSTRUCT SPECIAL DITCH (to be paid for under the item of 103A-1)
 Rt. 190.26-193.23

EXCAVATION & REMOVAL OF ROAD SURFACES AND/OR PAVEMENTS Lt. 187.00-192.25 194.00-197.45 199.00-203.00



Rev. Curve Data
 Δ 33°-52' Lt.
 D 4'
 R 1432.39'
 T 436.17'
 L 846.37'
 E 649'
 Bank 9 1/4" in 12"

B.M. #27-
 S1R 24" Yellow Birch
 U.S. El. 1706.611-
 198.25+14 (Offset 35' Lt.)
 New 18" x 36" ACCG.M.P. 16 Ga. Drop Inlet
 Type I-B (6 Deep)

197.45 + 49' Rt. 24" C.M.P.
 New 24" x 12" ACCG.M.P. 14 Ga.

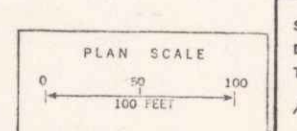
B.M. #26
 Chiseled on Boulder
 U.S. El. 1728.377

B.M. #27-B
 S.I.P. Pole
 U.S. El. 1727.39

B.M. #29-
 Chiseled on Boulder
 U.S. El. 1903.267-

B.M. #28-
 Chiseled on Boulder
 U.S. El. 1751.267-
 POST 199.181

Surv. PI 197.040-
 196.78.5
 Δ 33°-52' Lt.
 D 4'



SURVEYED BY J. Swaff
 DRAWN BY Banks
 TRACED BY J. J. J. DATE Dec 1964
 READSBORO
 PROJ. S NO. 0102 (5)
 SHEET 19 OF 183

5