

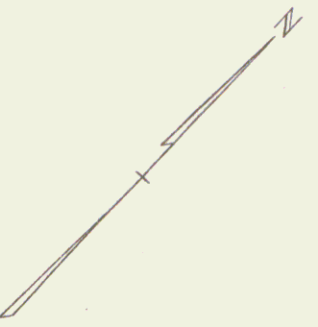
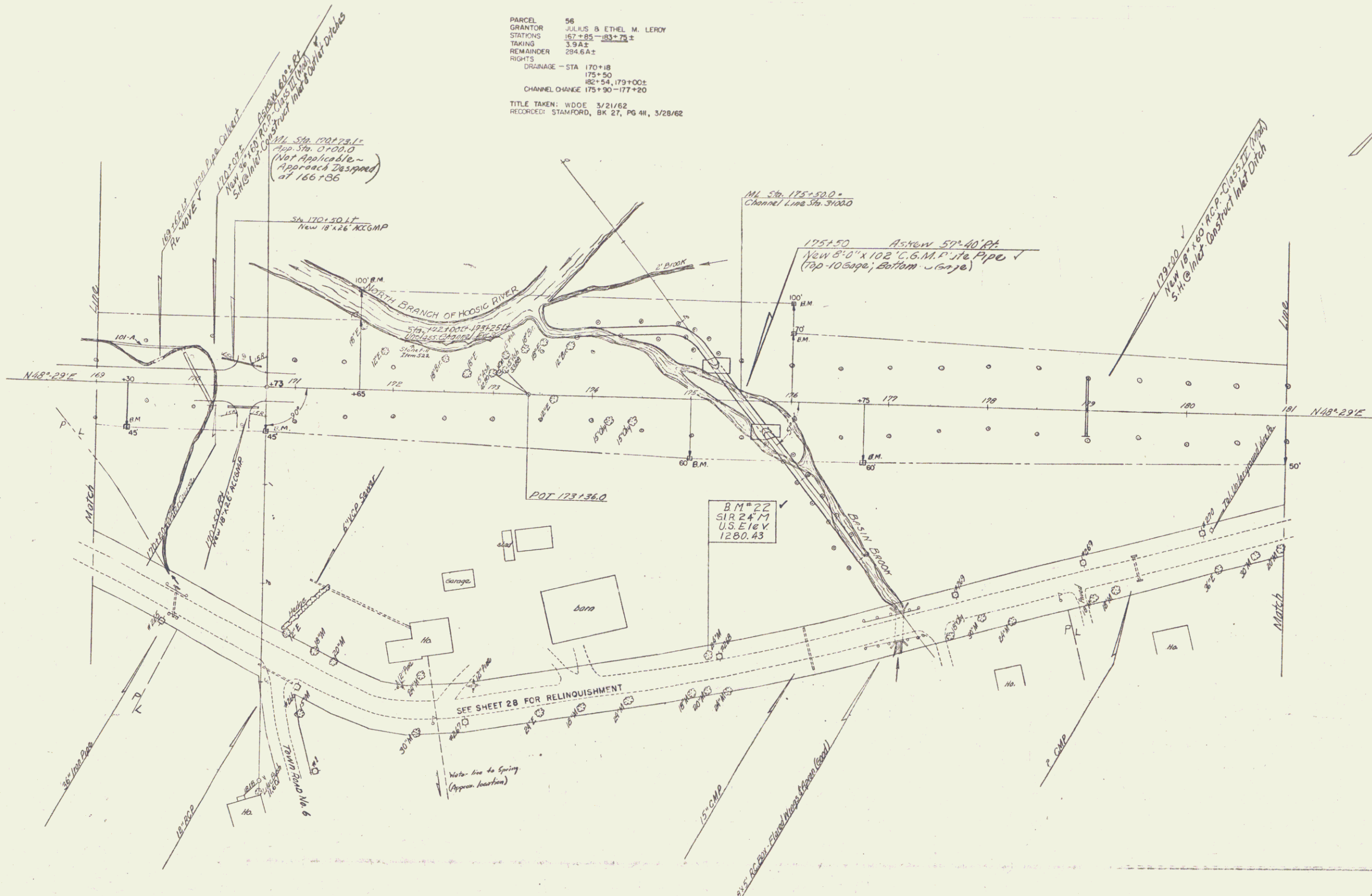
UNCLASS. CHANNEL EXCAVATION ITEM 106-C  
 172+00 - 173+25 LT  
 STONE FILL FOR SLOPE PROTECTION ITEM 522  
~~172+00 - 173+25 LT~~  
 171+70 - 173+40 LT

CONSTRUCT DRIVES  
 LT RT  
 170+50 170+50

TWO CABLE GUARD RAIL ITEM 542  
~~171+70 - 173+40 LT~~  
 STA. 172+14 - 182+04 LT  
 STA. 174+00 - 177+14 RT

SHEET NO.	LIST OF C.G.M.P. PIPE SHEETS
1	STANDARD STRUCTURES 53 - P.P. *1
2	" " " 53 - P.P. *2
3-5	CHANNEL SECTIONS

PARCEL 56  
 GRANTOR JULIUS B. ETHEL M. LEROY  
 STATIONS 157+85 - 183+75 ±  
 TAKING 3.94 ±  
 REMAINDER 284.6 ±  
 RIGHTS  
 DRAINAGE - STA 170+18  
 175+50  
 182+54, 179+00 ±  
 CHANNEL CHANGE 175+90 - 177+20  
 TITLE TAKEN: WDCE 5/21/62  
 RECORDED: STAMFORD, BK 27, PG 4H, 3/28/62



STAMFORD  
 No 5-242(3)  
 Sheet (23) of 157  
 Survey By ED SPAULDING 1959  
 PLOTTED BY A. GASNOY 1960  
 TRACED BY H. CONLIS 1960  
 SCALE: 1" = 50'