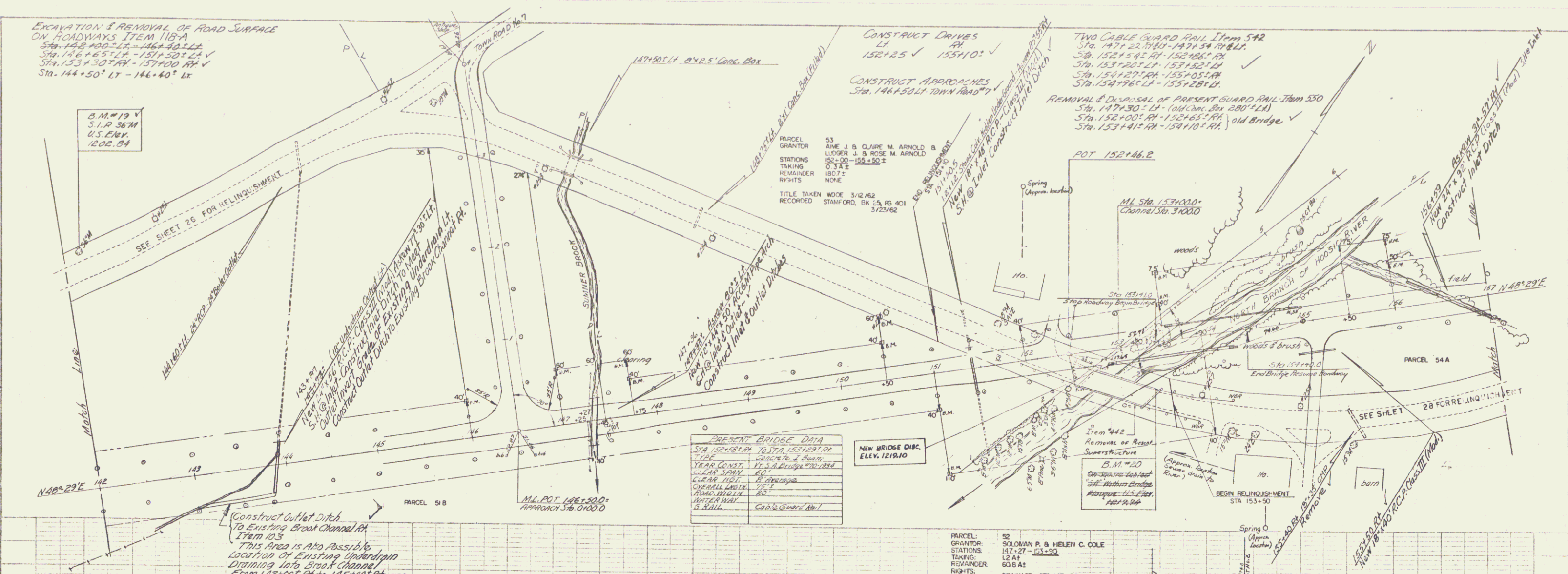


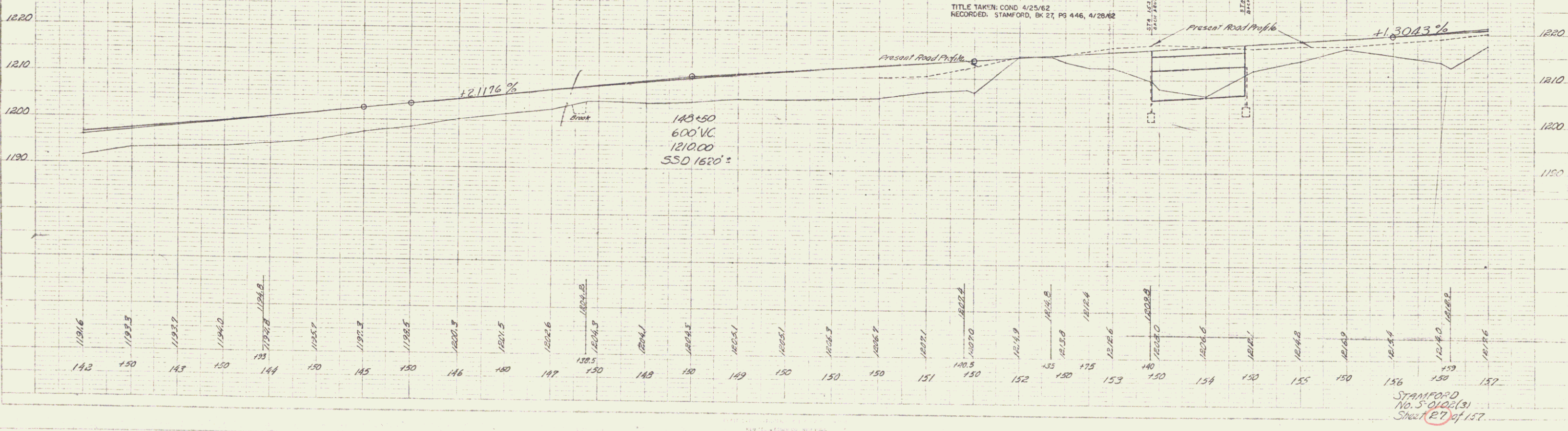
PLAN
 1859
 E.D. SMITH & SONS
 1860
 H. OWLES

PROFILE
 1859
 H. OWLES



PRESENT BRIDGE DATA

STA.	152+82.14 TO STA. 153+19.14
TYPE	WOODEN PLANK BRIDGE
YEAR CONST.	1912
CLEAR SPAN	27.5 ft
CURB SIDE	2 ft
OVERALL LENGTH	32 ft
ROAD WIDTH	20 ft
VERTICAL CURVE	5.5 ft
CONSTR.	See General Notes



STANFORD
 10.5.042(3)
 Sheet 27 of 157