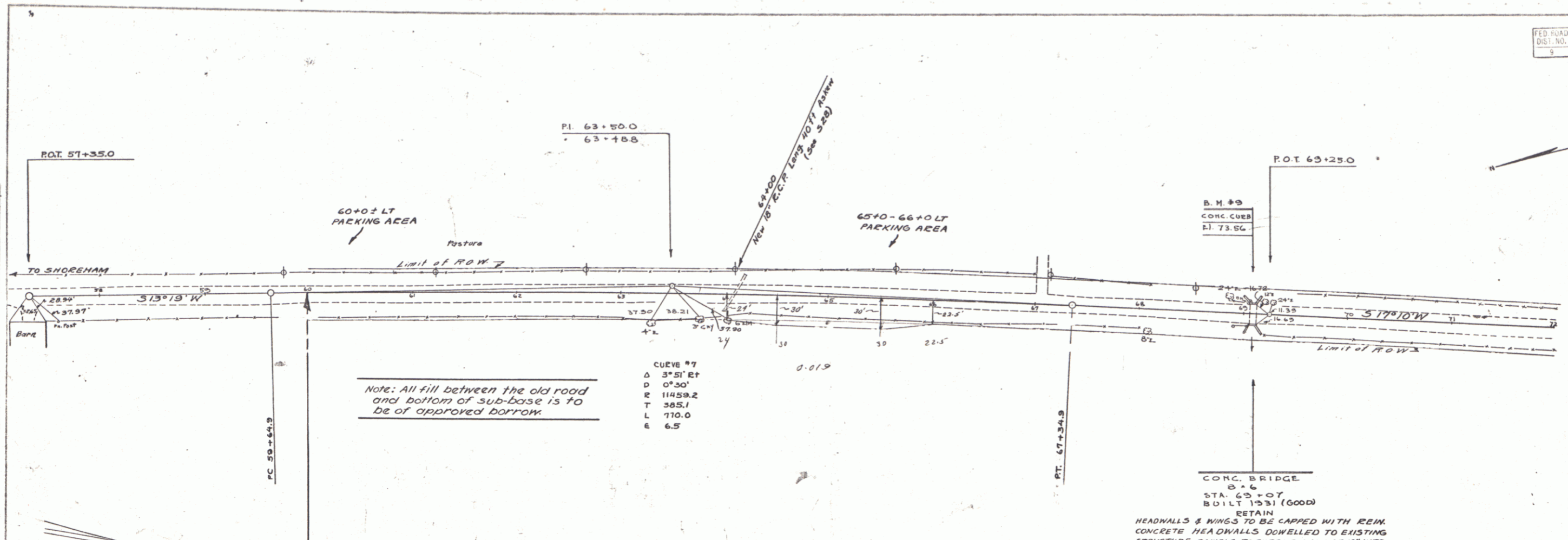




PLAN  
 DRAWN BY **B. MACCHI** 8/20/34  
 CHECKED BY **B. MACCHI** 9/2/34

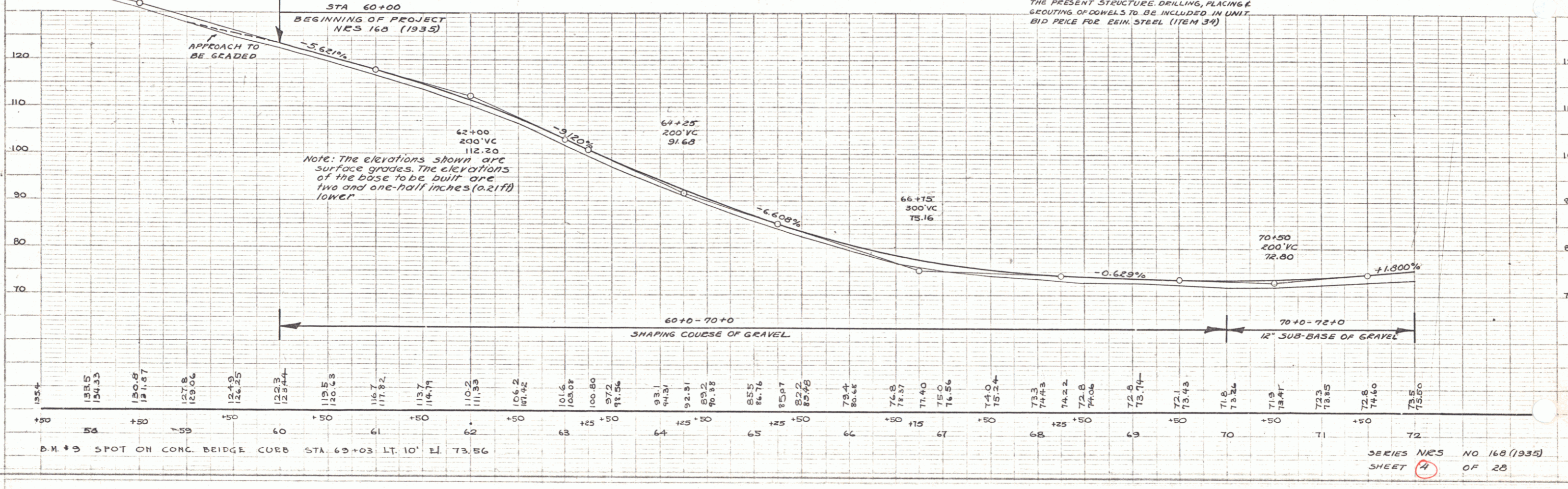
PROFILE  
 DRAWN BY **B. MACCHI** 9/2/34  
 CHECKED BY **B. MACCHI**



Note: All fill between the old road and bottom of sub-base is to be of approved borrow.

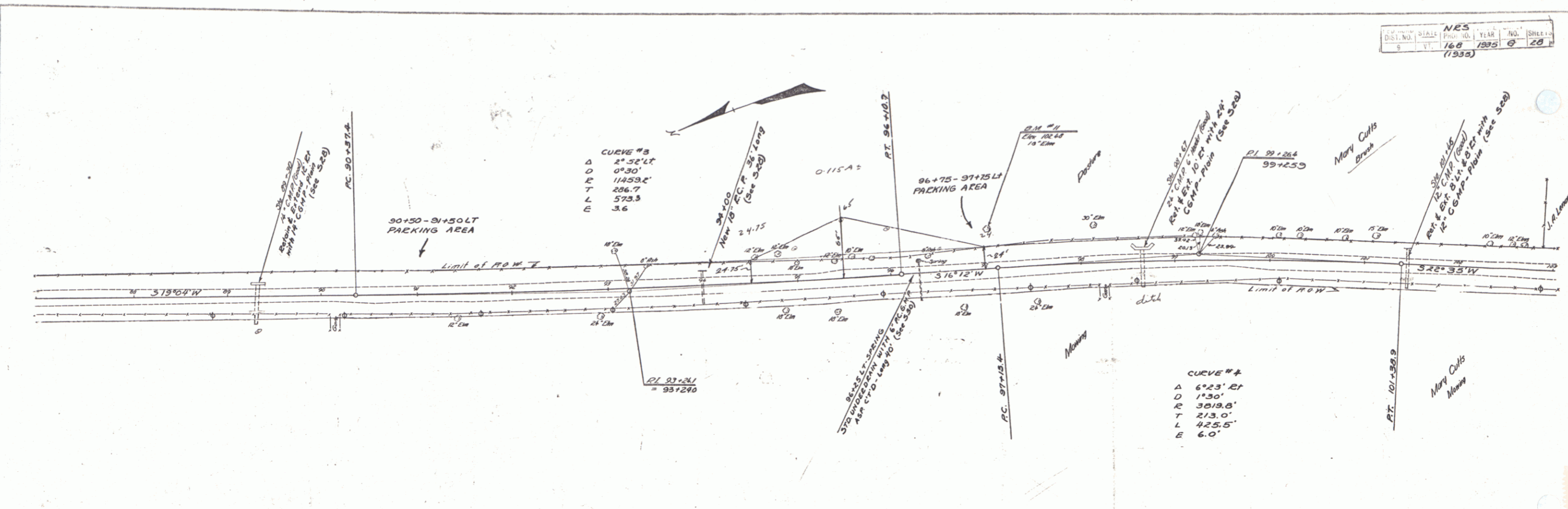
CURVE #7  
 Δ 3°51' RT  
 D 0°30'  
 R 11459.2  
 T 305.1  
 L 710.0  
 E 6.5

CONC. BRIDGE  
 STA. 63+07  
 BUILT 1931 (GOOD)  
 RETAIN HEADWALLS & WINGS TO BE CAPPED WITH REIN. CONCRETE. HEADWALLS DOWELED TO EXISTING STRUCTURE. DOWELS TO EXTEND A MIN. OF 12" INTO THE PRESENT STRUCTURE. DRILLING, PLACING & SECURING OF DOWELS TO BE INCLUDED IN UNIT. BID PRICE FOR REIN. STEEL (ITEM 39)





PLAN  
 NOTE: SHOW ELEVATION CURVES  
 PART OF ANY CURVES



PROFILE  
 DRAWN BY  
 CHECKED BY  
 DATE

