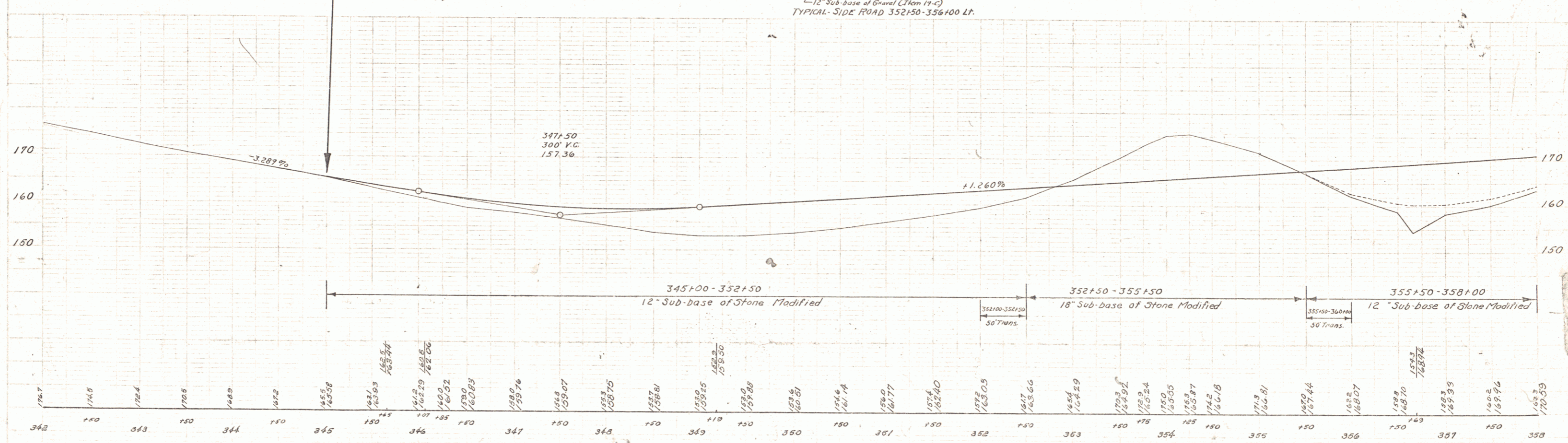
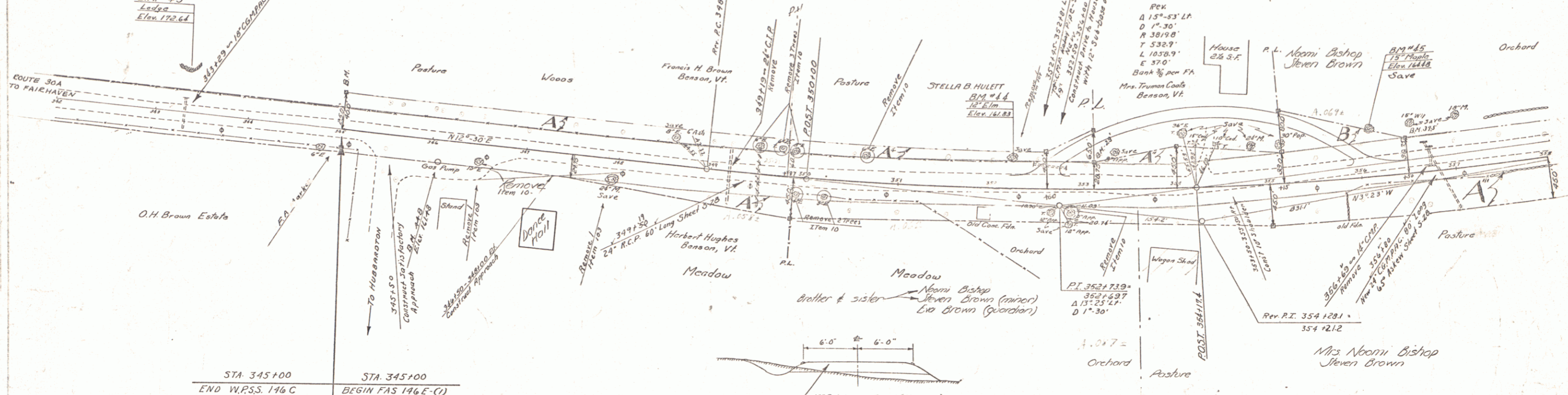


PARCEL	INSTRUMENT	DATE	GRANTOR	GRANTEE	RECORDED	REMARKS
A	W.D.O.E.	7-18-60	FRANCIS H. BROWN	ST. OF VT.	18	235 7-24-60
A'	W.D.O.E.	7-18-60	HERBERT J. & MELIN P. HUGHES	ST. OF VT.	18	439 7-26-60
A"-B	W.D.O.E.	7-18-60	COMA B. COATES	ST. OF VT.	18	438 7-26-60
A"	W.D.O.E.	7-18-60	MADON BISHOP DONALD BISHOP ET. AL.	ST. OF VT.	18	13 7-31-60
A"	W.D.O.E.	10-25-60	STELLA B. HULETT	ST. OF VT.	18	35 11-13-60

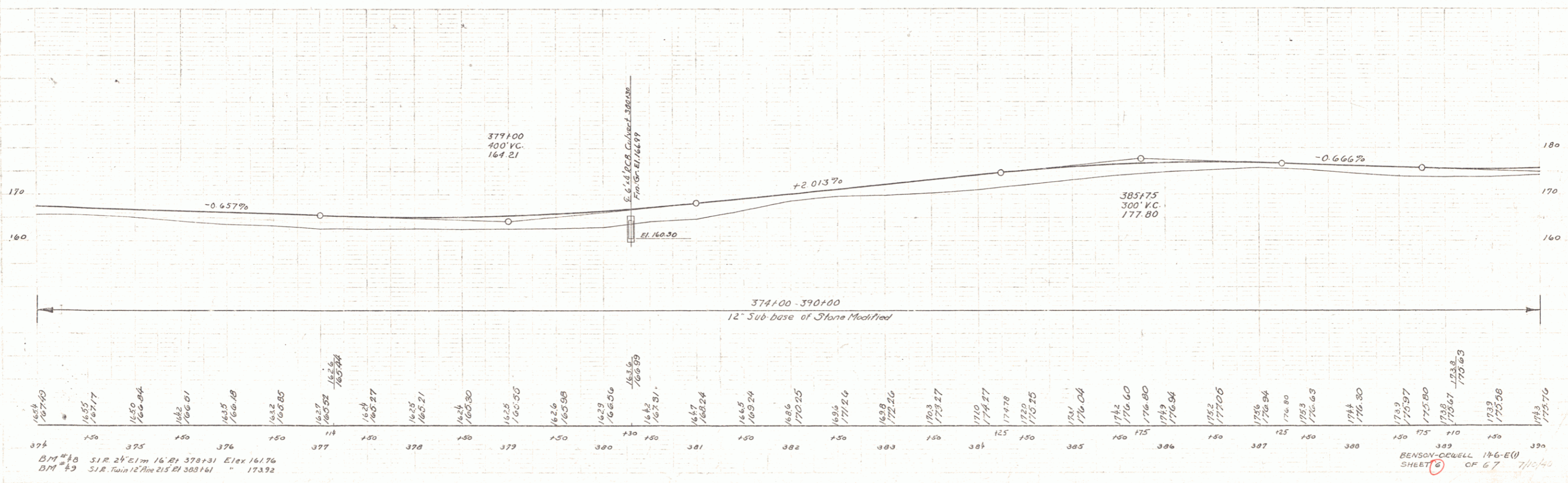
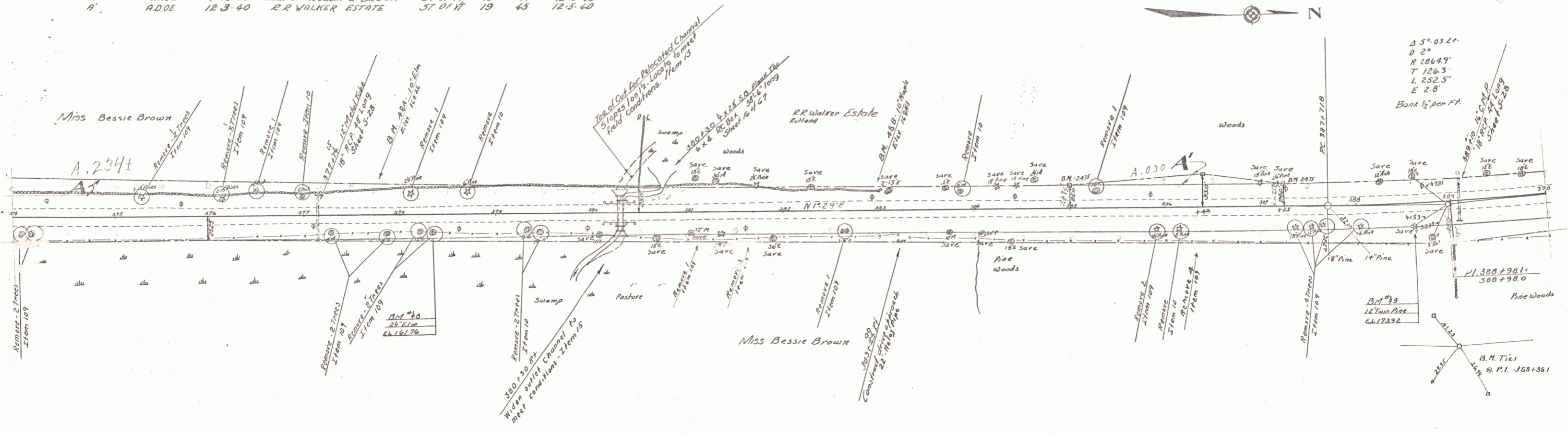


B.M. #43 Spot Or. Lodge 45' Lt. 343+35 Elev. 172.64
 B.M. #42 S.P. 12" Elm 21.5' Lt. 352+19 Elev. 161.93
 B.M. #45 S.P. 15" Maple 33' Lt. 356+07 Elev. 164.48

BENSON-DWELL (146-61)
 SHEET 14 OF 67

PARCEL INSTRUMENT	DATE	GRANTOR	GRANTEE	RECORDED BENIGN	REMARK
A	W.D.O.E.	7-18-40	HEIR OF ROLLIN E. BROWN	ST. OF VY 2884	DATE 12-15-40
A'	A.D.O.E.	12-3-40	R.R. WALKER ESTATE	ST. OF VY 19 45	DATE 12-5-40

PA. 6. 146 E 0 1941 6 67



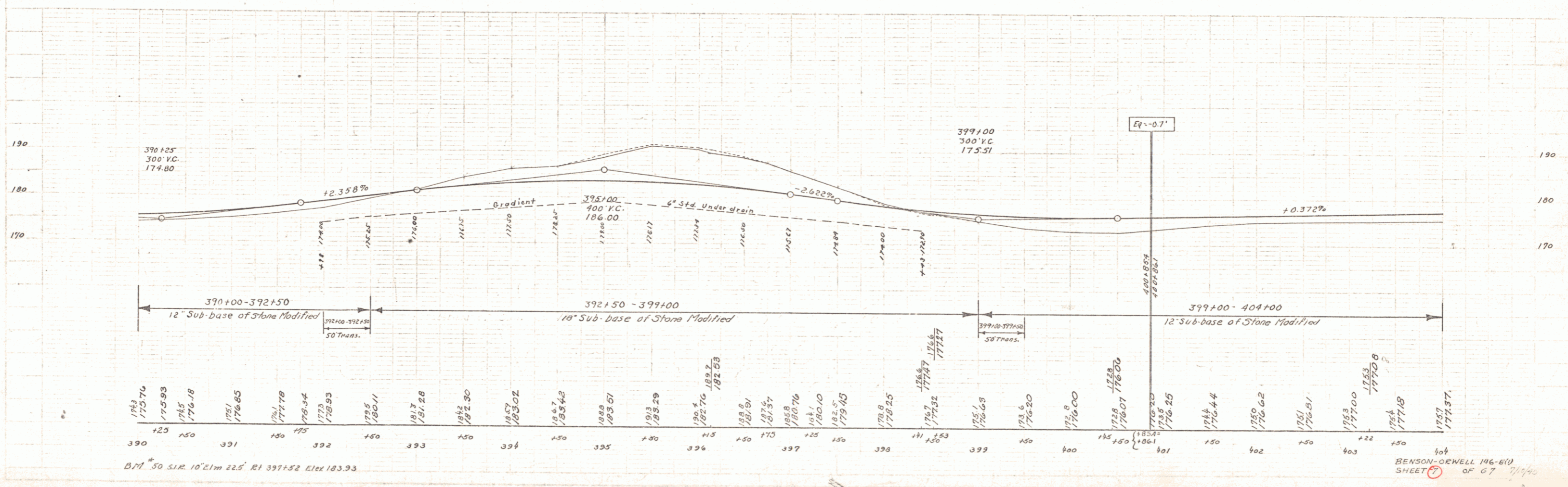
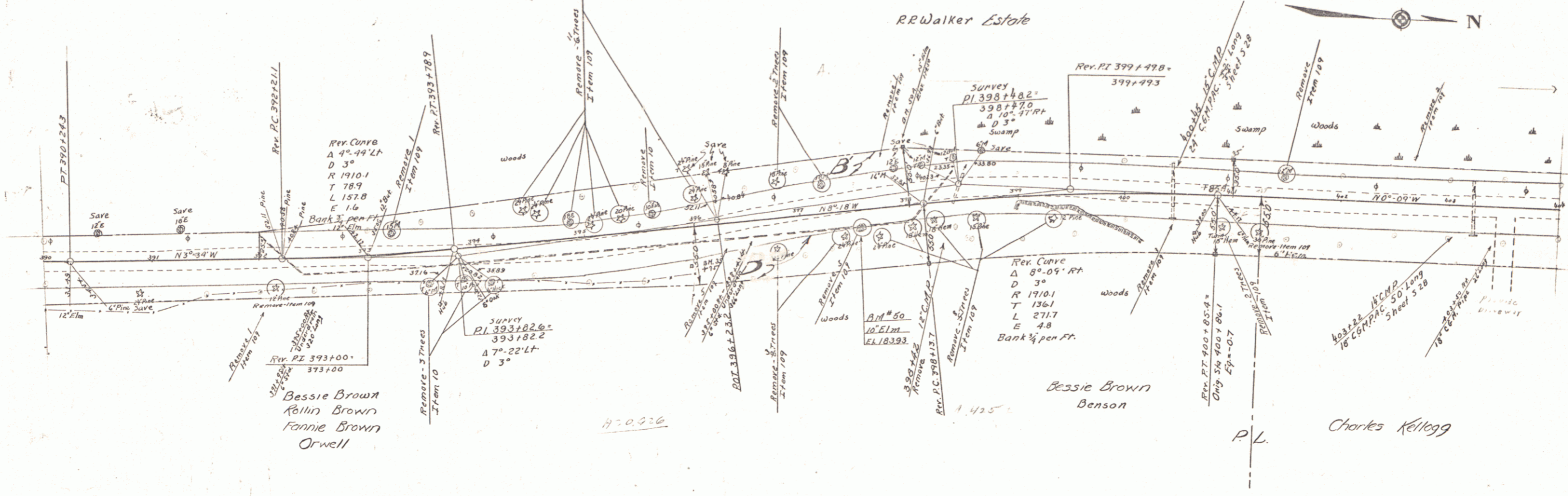
B.M. #10 S.I.R. 24' Elm 16' Bl. 370' 31' Elev. 161.76
 B.M. #9 S.I.R. Twin 12' Elm 215' Bl. 303' 161' Elev. 173.92

BENSON-DWELL 146-E(1)
 SHEET 67 OF 67 7/10/40

PARCEL IDENTIFICATION	DATE	GRANTOR	GRANTEE	RECORDED BENION	REMARKS
B W.D. DE	7-18-40	HEIR OF ROLLIN E BROWN	ST OF W	BOOK PAGE DATE	
B' A.D. DE	12-3-40	R R WALKER ESTATE	ST OF W	19 65 12-3-40	

NOTE: Sta 399+50 - 404+50 LT.
Any soft material found under proposed fill to be removed and placed on adjacent fill slopes.
Payment to be Common Excavation, Item 12.

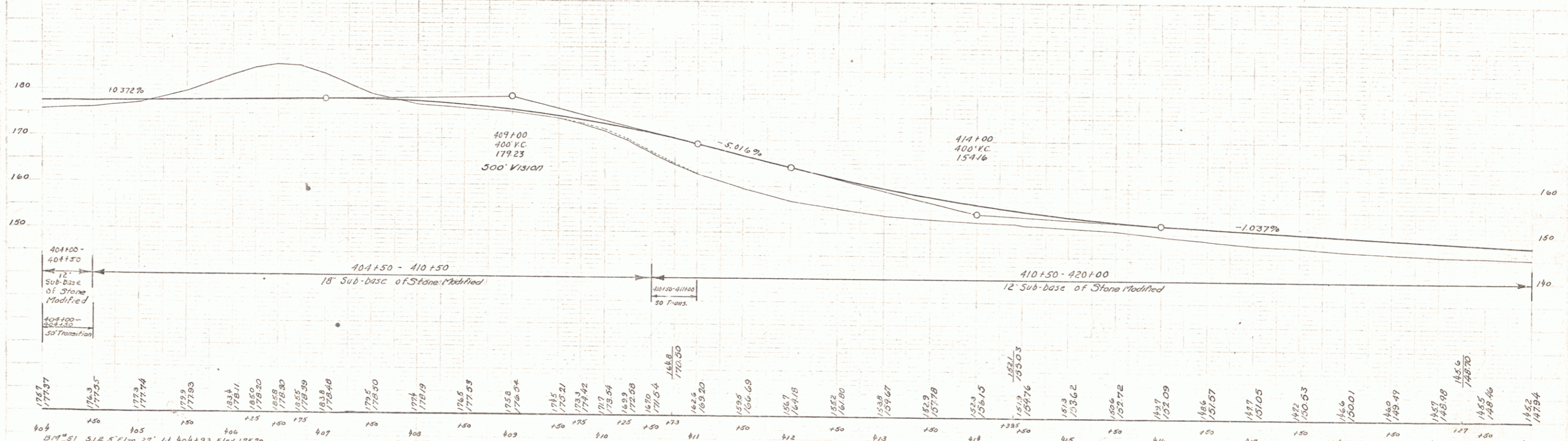
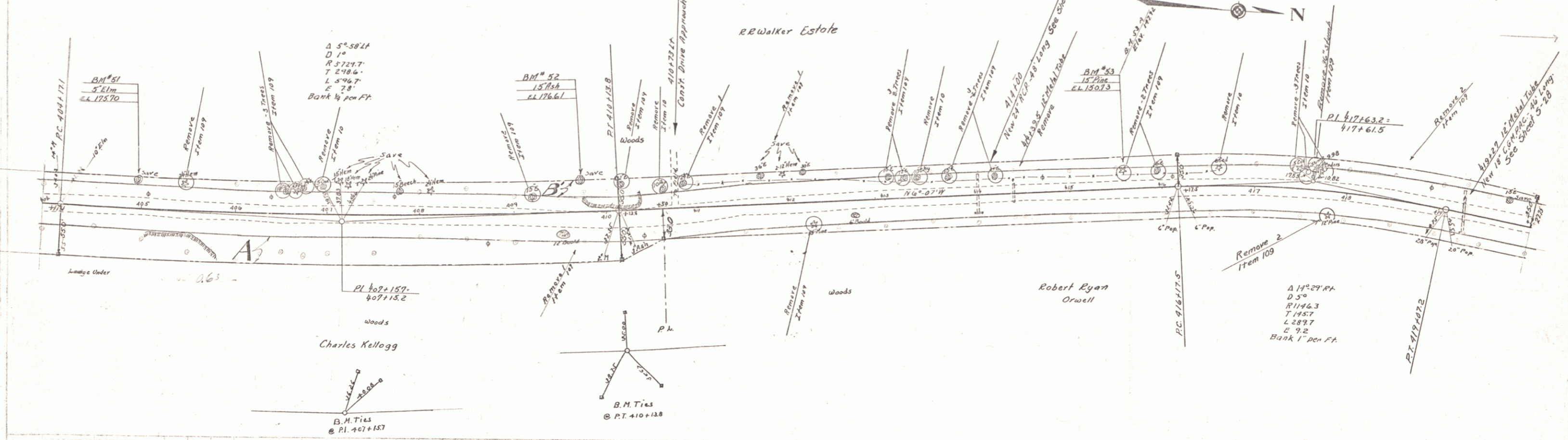
P.A.S. 146(6) 1941 7 67



BENSON-GEWELL 146-610 SHEET 67

PARCEL	INSTRUMENT	DATE	GRANTOR	GRANTEE	RECORDED	REMARKS
B	A.D.O.E.	12-3-60	R.R. WALKER ESTATE	ST OF VT	BOOK PAGE DATE	12-3-60
A	W.D.O.E.	7-18-60	CHARLES KELLOGG	ST OF VT	18 63 7-24-60	
C	W.D.O.E.	7-18-60	R.H. RYAN	ST OF VT	19 1 7-24-60	

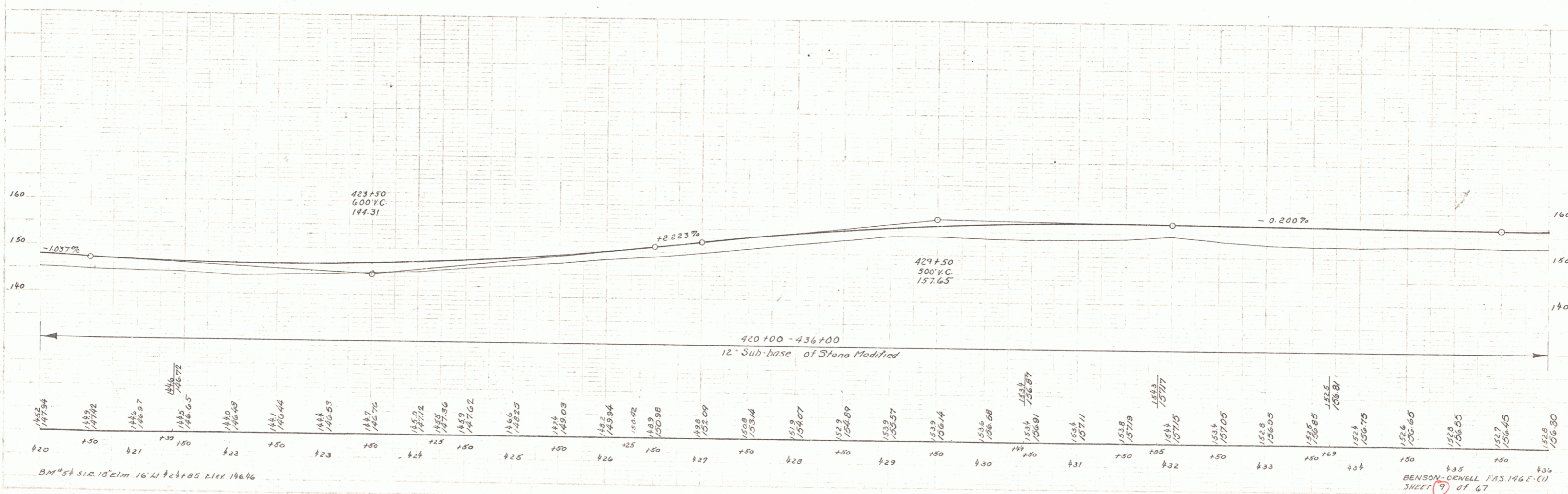
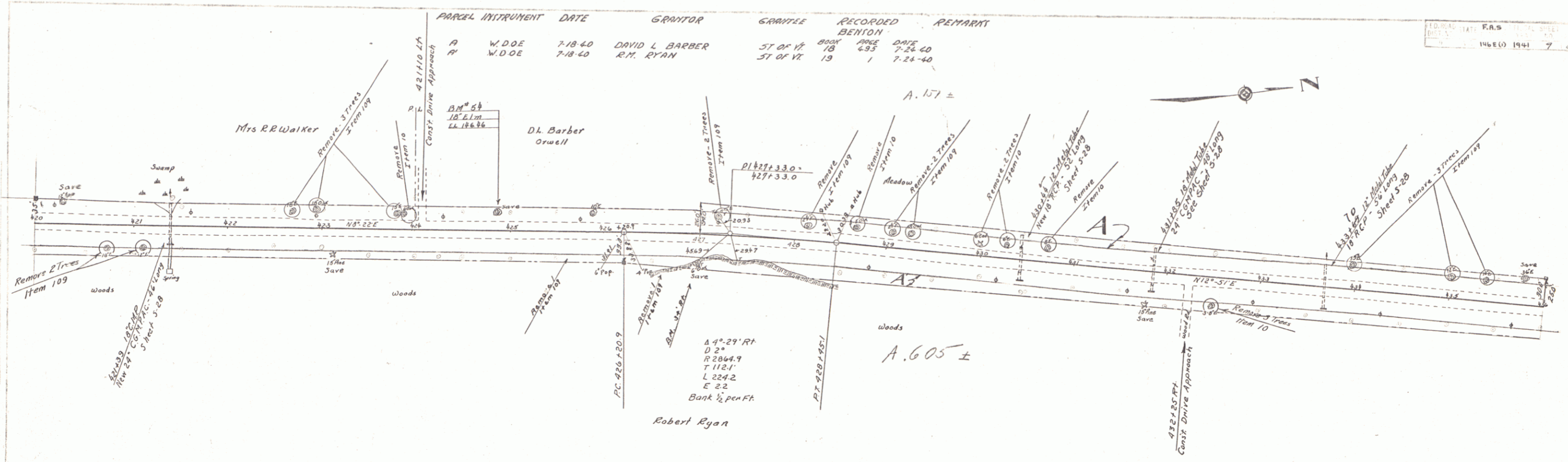
FLORIDA STATE P.A.S. 10000 SHEET
 1946 (6) 1941 d



404+00 - 404+100: 12' Sub-base of Stone Modified
 404+100 - 404+150: 50' Transition
 404+150 - 410+50: 18' Sub-base of Stone Modified
 410+50 - 411+00: 20' Paved
 410+50 - 420+00: 12' Sub-base of Stone Modified

BENSON-GEWELL P.A.S. 146(61)
 SHEET (B) OF 67

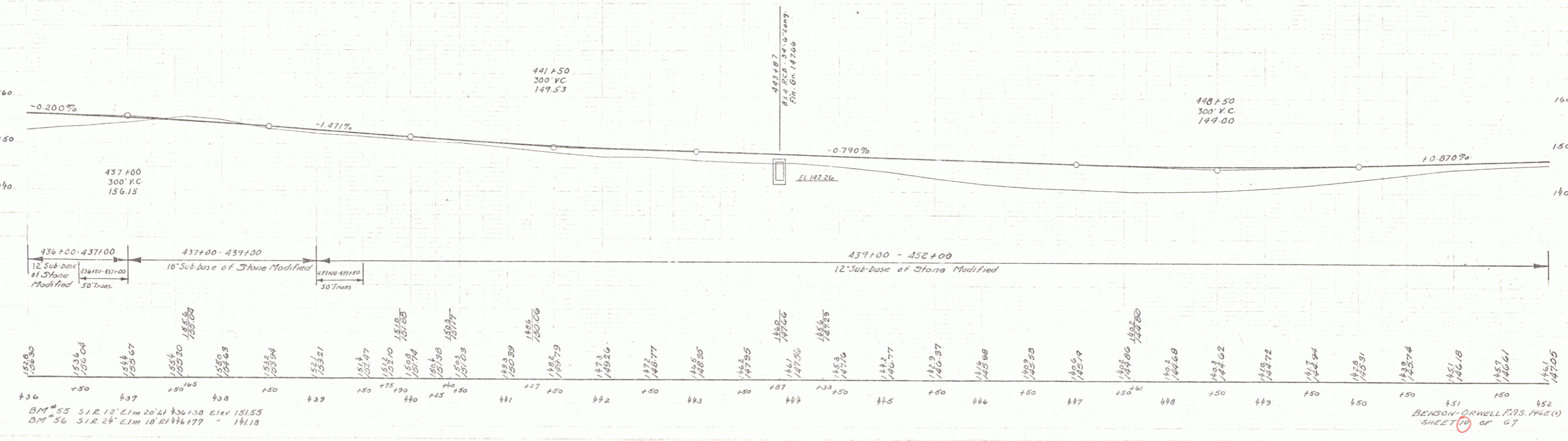
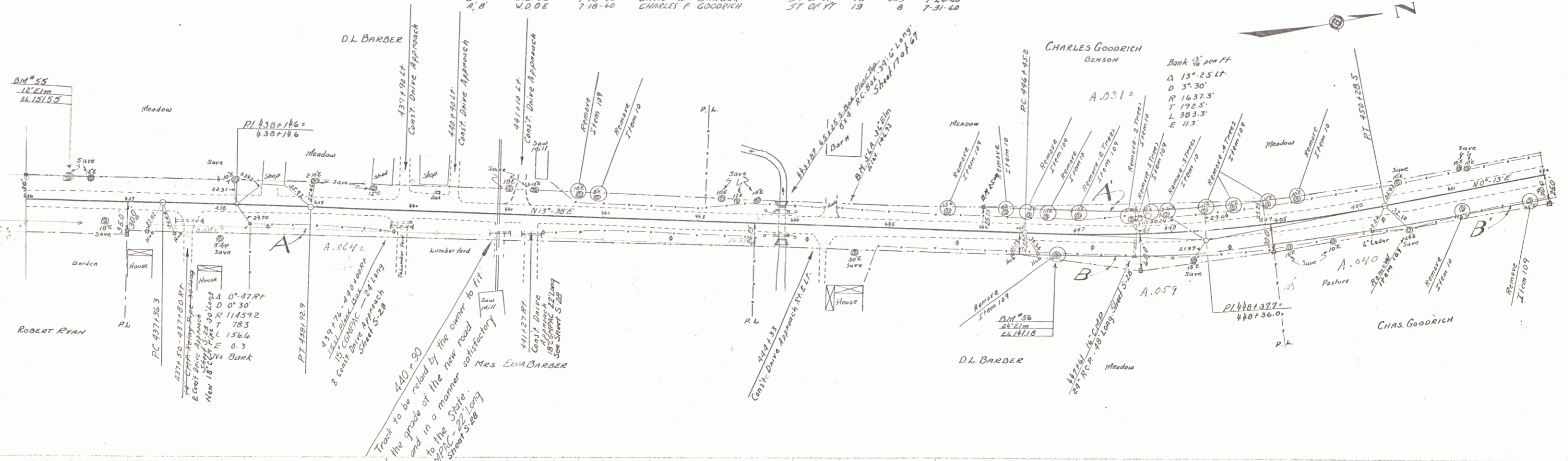
PARCEL	INSTRUMENT	DATE	GRANTOR	GRANTEE	RECORDED	REMARKS
A	W.D.O.E.	7-18-40	DAVID L. BARBER	ST OF V	BOOK 18 PAGE 693	7-24-40
A'	W.D.O.E.	7-18-40	R.H. RYAN	ST OF V	BOOK 19 PAGE 1	7-24-40



BM 54 31.8' EIM 16.41 424+05 Elev 146.46

PARCEL INSTRUMENT	DATE	GRANTOR	GRANTEE	RECORDED	REMARKS
A	W.D.O.E. 7-18-40	ELVA R BARBER	ST OF VT	8005	DATE 7-23-40
B	W.D.O.E. 7-18-40	DAVID L BARBER	ST OF VT	18	DATE 7-24-40
A, B	W.D.O.E. 7-18-40	CHARLES F GOODRICH	ST OF VT	19	DATE 7-31-40

LOCAL STATE P.O.S. LEGAL SHEET TOTAL
 14600 1941 70 67



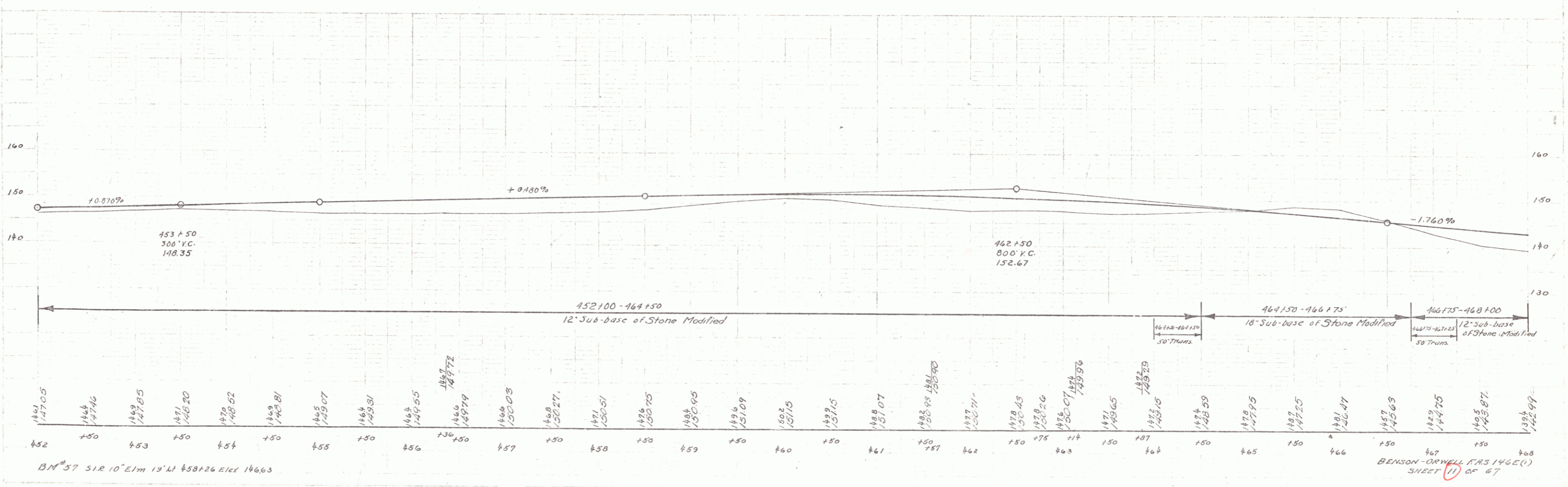
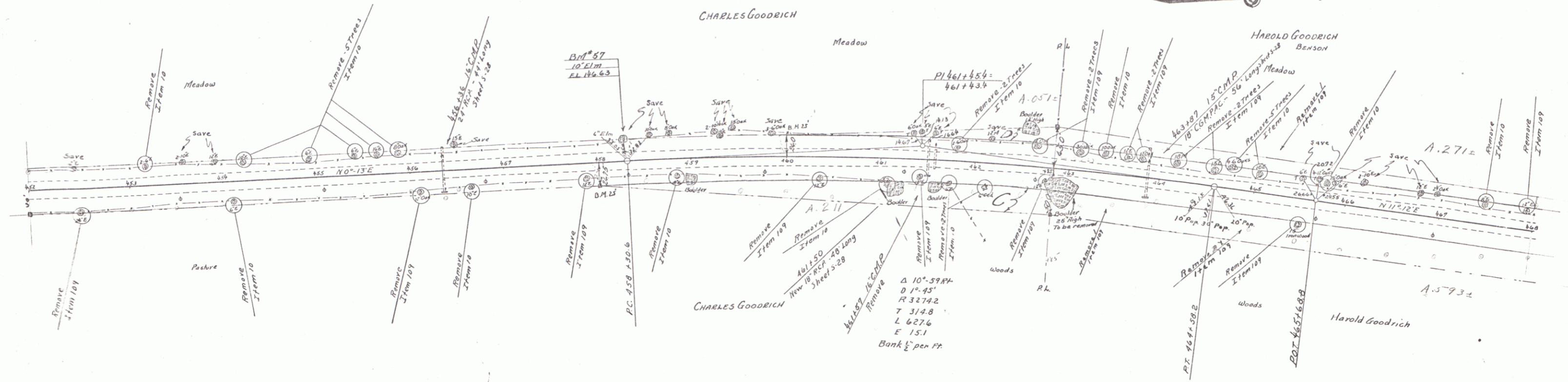
BM #55 51.2' E1m 20' 41' 436+30 Elev 151.55
 BM #56 51.2' E1m 18' 04' 46' 177' Elev 141.18

BENSON-ORWELL P.O.S. 14600
 SHEET 70 OF 67

8

PARCEL INSTRUMENT DATE GRANTOR GRANTEE RECORDED REINSTRUMENT
 C, D W.D.O.E 7-18-40 CHARLES F. GOODRICH ST OF W. BENSON BOOK PAGE DATE
 12 8 7.31.40

F.A.S.
 146(E) 144 11 67

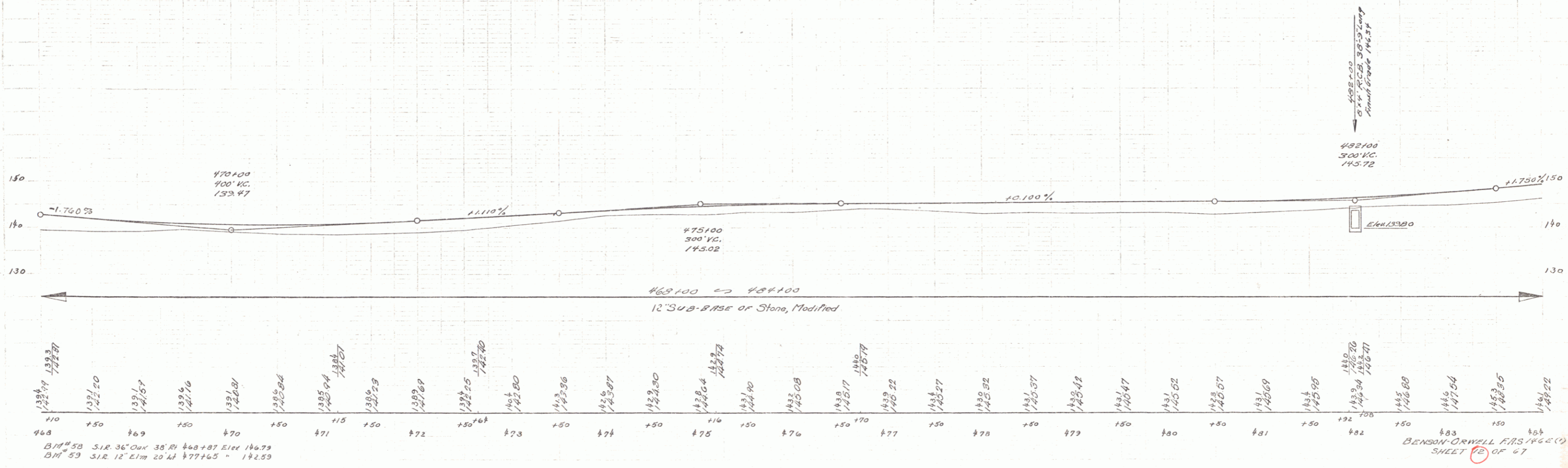
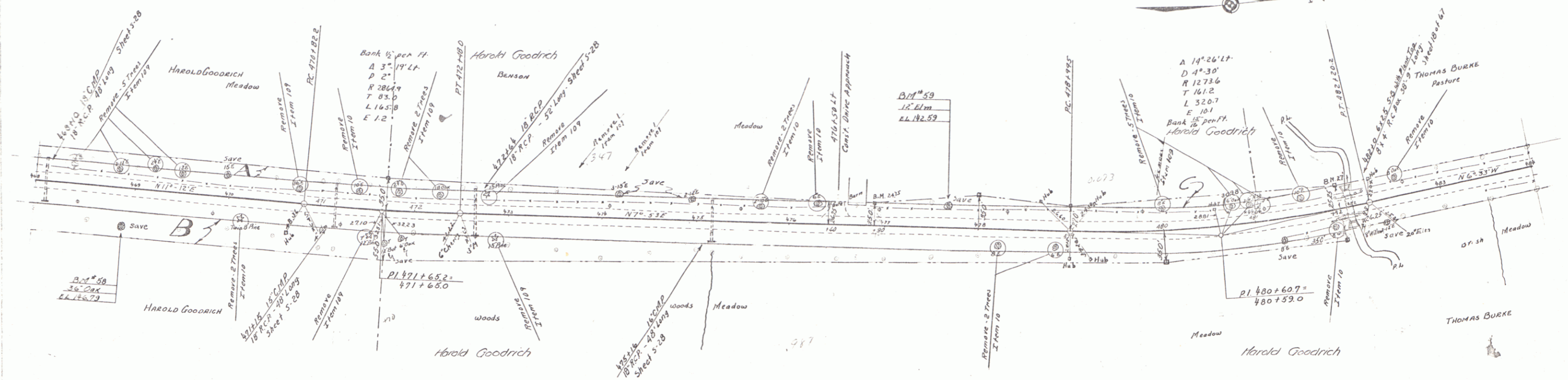


BM 57 51.8 10' ELM 19' 41' 48" + 26' ELEV 146.63

BENSON - GRAYELL P.S. 146(E) SHEET 11 OF 67

PARCEL INSTRUMENT	DATE	GRANTOR	GRANTEE	RECORDED	REMARKS
A, B, C	V.D.O.E	7-18-40	HAROLD K GOODRICH	STAFF	BENTON BOX 19 PAGE 5 DATE 7-26-40

F.A.S.
146(E) 1941 12 67



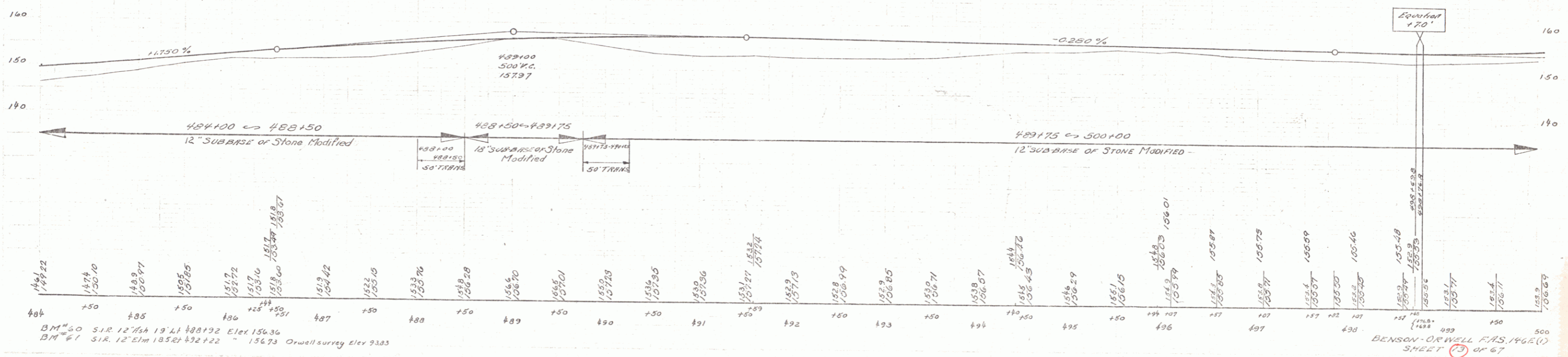
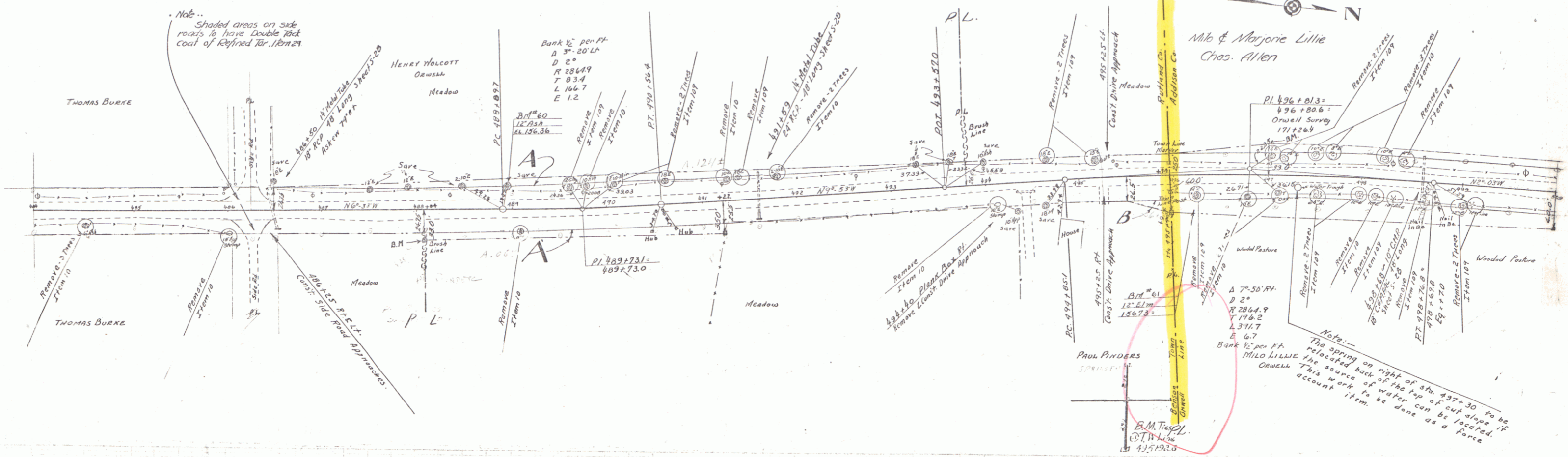
B.M. 59 S12.36° OAK 38' RI 468+87 Elev 146.79
B.M. 59 S12.12° Elm 20' AT 477+65 " 142.59

BENTON-ORWELL F.R.S. 146(E)
SHEET 22 OF 67

PARCEL	INSTRUMENT	DATE	GRANTOR	GRANTEE	RECORDED	REMARKS
A	V.D.O.E.	8-31-60	HENRY E. ERNEST VOLCOTT	ST OF VT	BOOK 19 PAGE 22	DATE 9-6-60
A, B	V.D.O.E.	7-24-60	PAUL PINDERS	ST OF VT	19 16	7-31-60

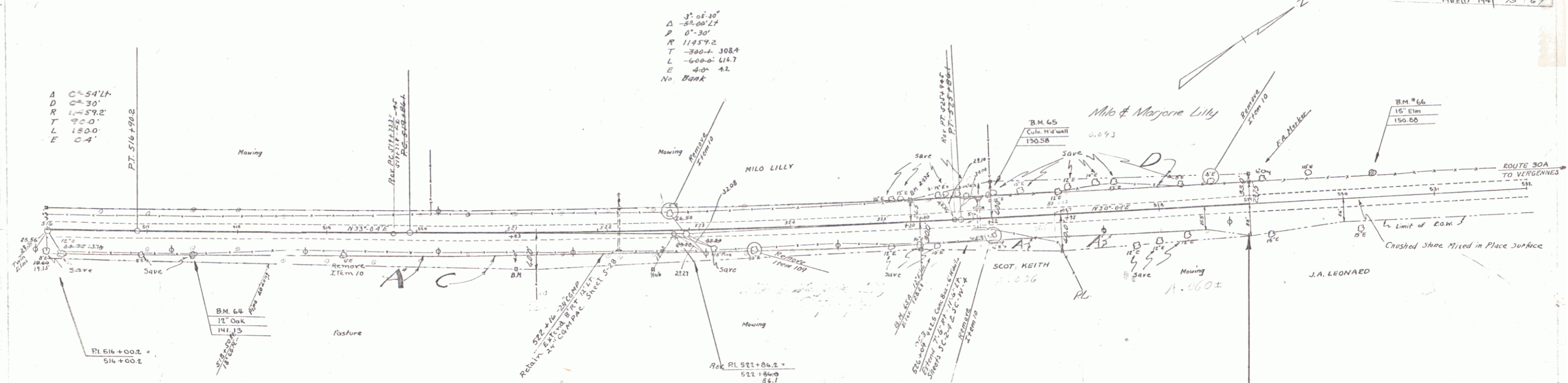
NOTE: 314 495.19 ft. Town & County markers to be relocated as directed by the Engineer. Payment to be made as extra work.

FR. G. 146(E) 1941 13 67



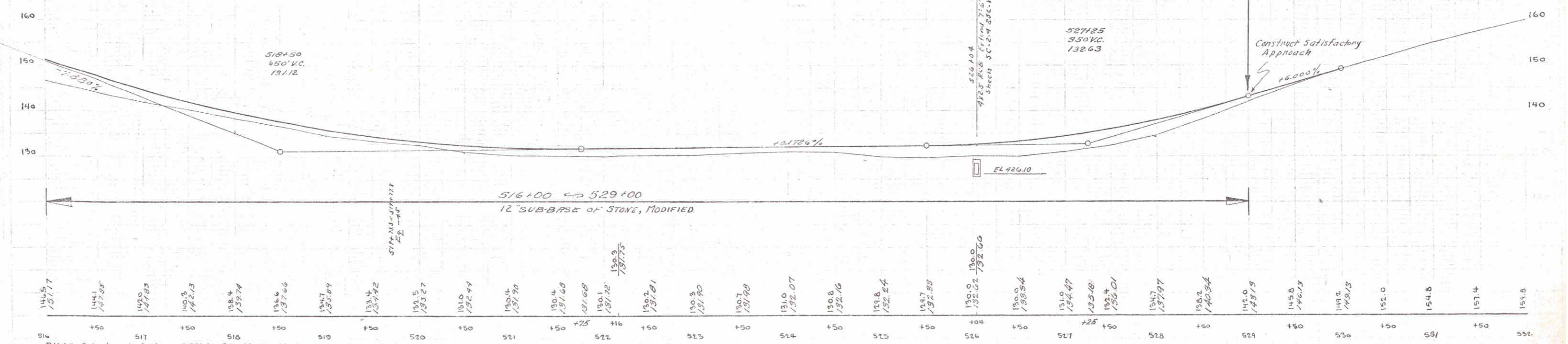
BM #60 S.I.R. 12" x 18" 19' x 11" 488192 Elev 156.36
 BM #61 S.I.R. 12" x 18" 18.5" x 12" 482122 Elev 156.73 Orwell survey Elev 93.83

BENSON-ORWELL F.A.S. 1966 (1) SHEET 13 of 67



PARCEL	INSTRUMENT	DATE	GRANTOR	GRANTEE	RECORDED	REMARKS
C-D	W.D.O.E.	7-18-40	MILLO LILLY, MARGORIE LILLY & CHARLEY C. ALLEN	ST. OF VT.	26	243-65 7-24-40
A	W.D.O.E.	7-18-40	SCOTT KEITH	ST. OF VT.	26	246 7-24-40
B	W.D.O.E.	7-18-40	J.A. LEONARD	ST. OF VT.	26	245 7-24-40
B'	W.D.O.E.	9-25-40	SCOTT KEITH	ST. OF VT.	26	254 9-28-40

Sta. 529+00
 End Project F.A.S. 146 E-1
 Sta. 139+00
 Begin N.R.S. 168 (1935)



Sta	Elev	Notes
516	146.5	B.M. 64 Spike in root of 12" Oak
517	147.05	B.M. 65 Spot on curb, headwall
518	147.23	B.M. 66 Spike in root of 19" Elm
519	147.66	24' RI Sta 511+55 Elev. 141.15
520	147.74	12' Lt Sta 524+05 Elev. 150.58
521	147.90	23' Lt Sta 530+34 Elev. 150.88
522	148.0	
523	148.13	
524	148.23	
525	148.43	
526	148.5	
527	148.63	
528	148.74	
529	148.8	
530	148.9	
531	149.0	
532	149.1	
533	149.2	
534	149.3	
535	149.4	
536	149.5	
537	149.6	
538	149.7	
539	149.8	
540	149.9	
541	150.0	
542	150.1	
543	150.2	
544	150.3	
545	150.4	
546	150.5	
547	150.6	
548	150.7	
549	150.8	
550	150.9	
551	151.0	
552	151.1	
553	151.2	
554	151.3	
555	151.4	
556	151.5	
557	151.6	
558	151.7	
559	151.8	
560	151.9	