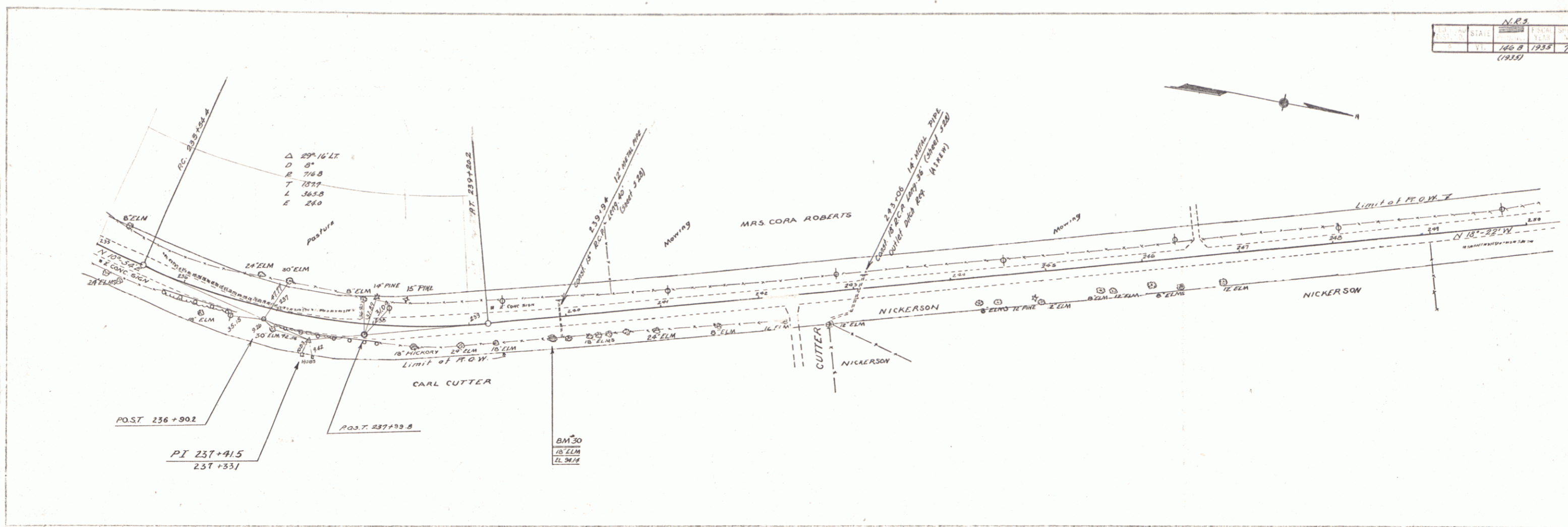
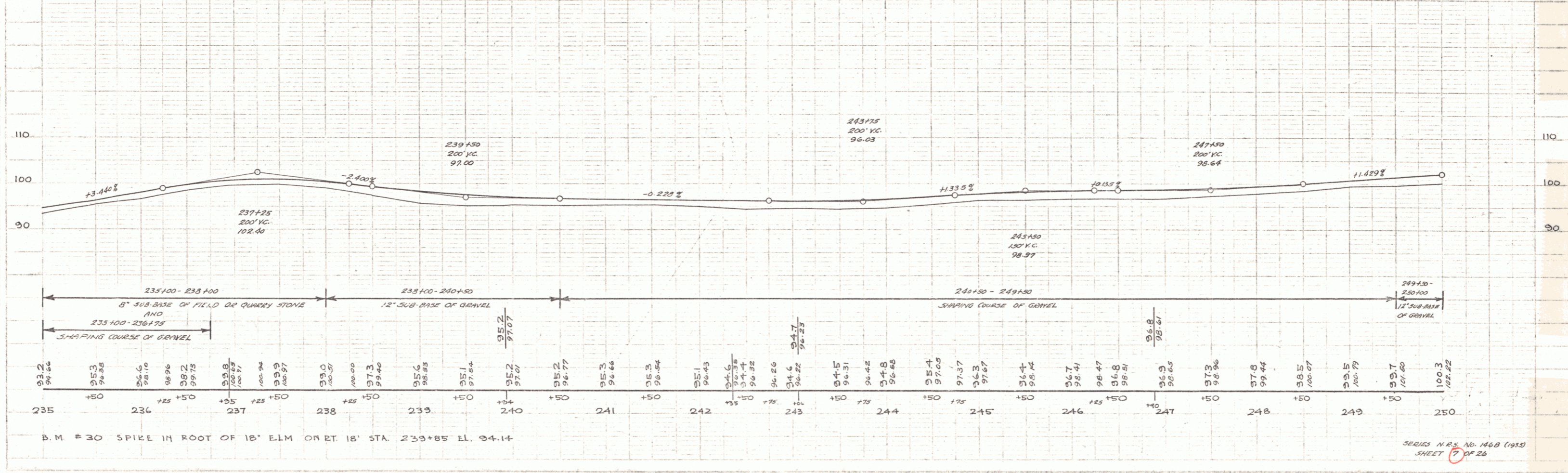


N.P.S.				
DATE	STATE	SECTION	SHEET	NO.
10 8 1933	7	26		
1933				

TRACED
 CASEINGTON
 CASS
 9-5-33



ELEVATION
 3/31



B.M. # 30 SPIKE IN ROOT OF 18' ELM ON RT. 18' STA. 239+85 EL. 94.14