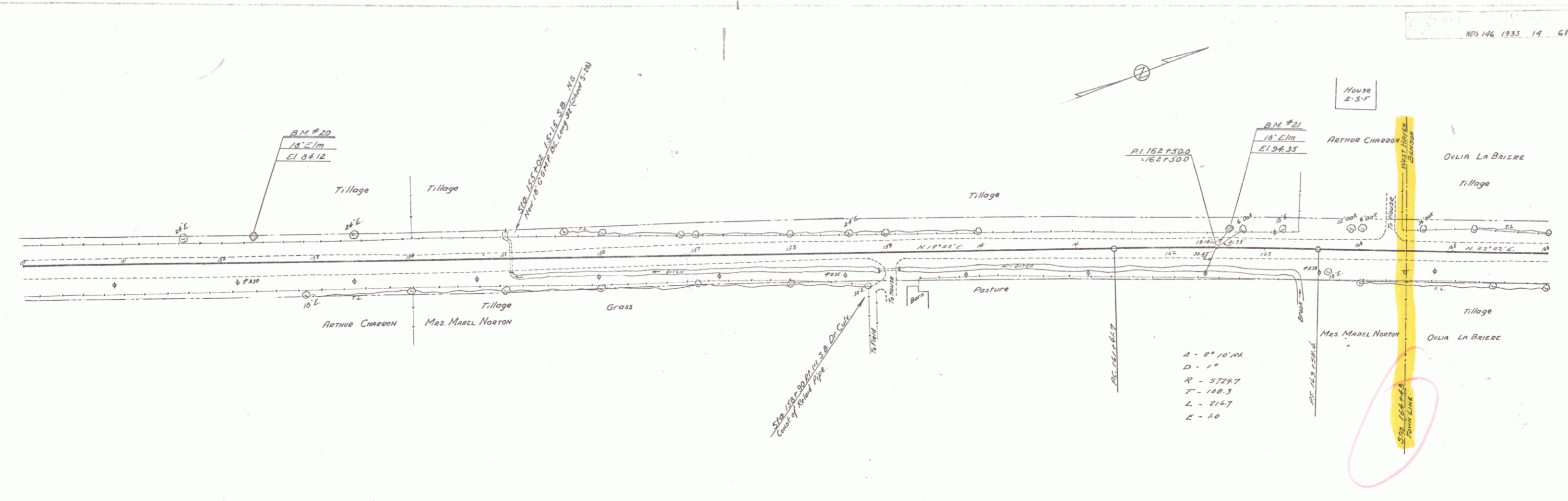
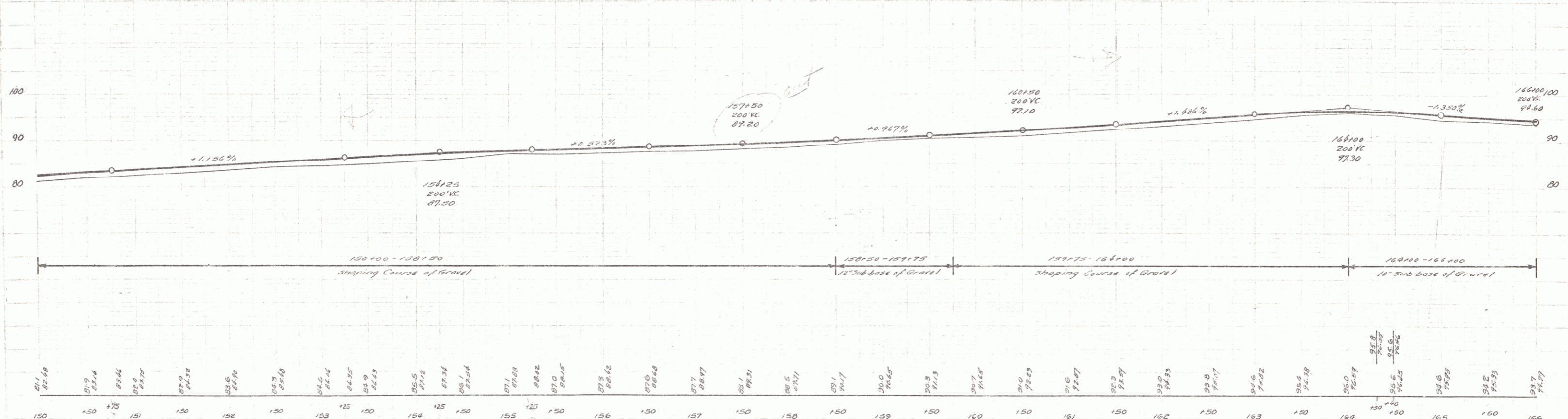


PLYMOUTH
 R. W. HIGGARD
 GRADERS
 914/14
 TRACED



$A = 2^{\circ} 10' 00''$
 $D = 1''$
 $R = 5724.7$
 $T = 188.3$
 $L = 216.7$
 $E = 10$



B.M. #20 SPINE IN ROOT OF 18" ELM 23' 11" SW 152+33 Elev. 84.12
 B.M. #21 " " " " 18" ELM 157+11 SW 162+63 Elev. 94.35

SERIES No 146
Sheet 14 of 61