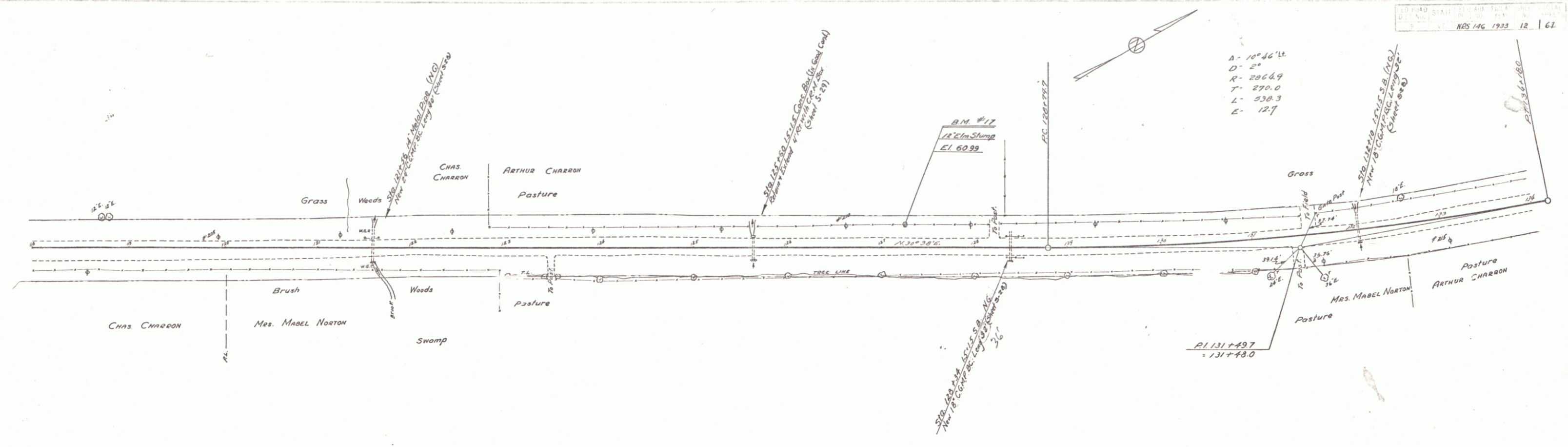
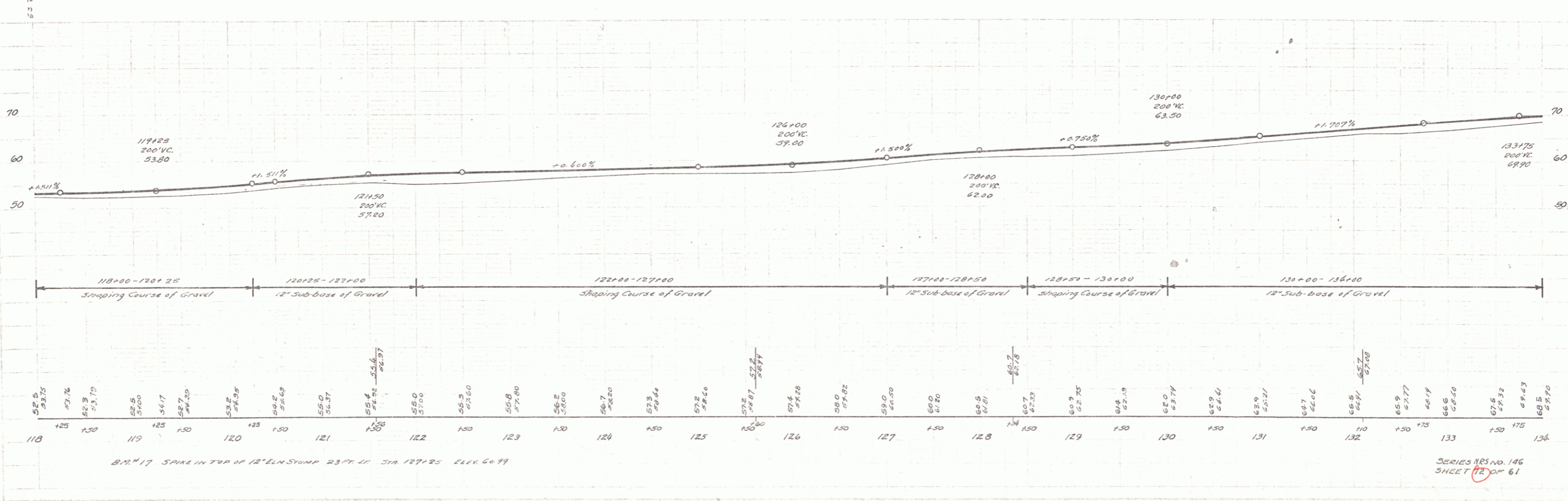


Planned Highway  
 TRACED  
 61/89



A = 10° 46' 14"  
 D = 2°  
 R = 206.69  
 T = 270.0  
 L = 330.3  
 E = 12.7

PROPOSED  
 PAVEMENT  
 12' x 18'



B.M. #17 STAKE IN TOP OF 12'x18' STUMP 23 FT. W. STA. 127+25 EL. 60.99