

FED. ROAD DIST. NO.	STATE	PROJ. NO.	FISCAL YEAR	SHEET NO.	TOTAL SHEETS
9	VT.	146	1933	1	61

INDEX OF SHEETS

SHEET NO. 1 TITLE PAGE

" 2 TYPICAL CROSS-SECTION OF IMPROVEMENT } GRAVEL SURFACE COURSE

" 3 BANKING AND WIDENING TABLES

4-17 PLAN & PROFILE SHEETS

" 18 STANDARD STRUCTURE SHEET 3-20 PIPE CULVERT

" 19 " " " 3-29 BOX " "

" 20 " " " 3-30 GUARD RAIL " "

" 21 BARRICADE, SIGNS AND LIGHTS 3B-11

" 22-61 CROSS SECTIONS

STANDARD SHEETS 3-20 AND 3-29 SUBMITTED TO THE CHIEF ENGINEER ON MAY 10, 1933.

STANDARD SHEET 3-30 SUBMITTED TO THE CHIEF ENGINEER ON AUG. 13, 1933.

INDEX OF BRIDGE SHEETS

SHEET NO. 17 PLAN AND PROFILE

" 65-0 3.8 NO. 20 (MODIFIED FOR 30' SHED)

" 65-0 3.8 NO. 2 STD. DETAILS 5-205, 5-206, 5-206, 5-220, 5-221

" 65-0 3.8 NO. 24 STD. DETAILS 5-222, 5-223, 5-224

" 65-0 3.8 NO. 25 STD. DETAILS 5-225

" 65-0 3.8 NO. 26 SHED ENDS 30"

" 65-0 3.8 NO. 27 CHOLE RAIL

" 65-0 3.8 NO. 28 BARRICADES, ETC.

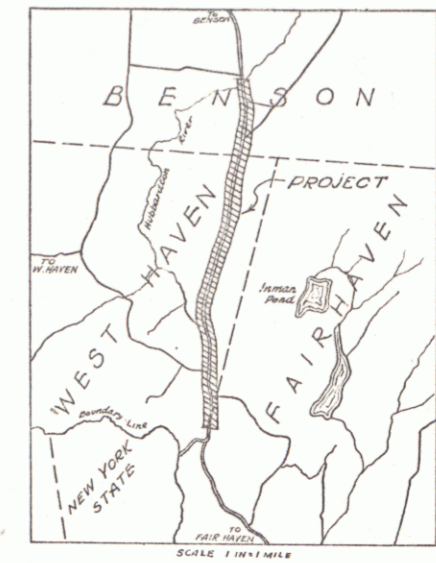
STATE OF VERMONT
STATE HIGHWAY DEPARTMENT

PLAN AND PROFILE OF PROPOSED
STATE HIGHWAY
NATIONAL RECOVERY SECONDARY PROJECT

TOWNS OF WEST HAVEN AND BENSON
FAIR HAVEN-VERGENNES ROAD

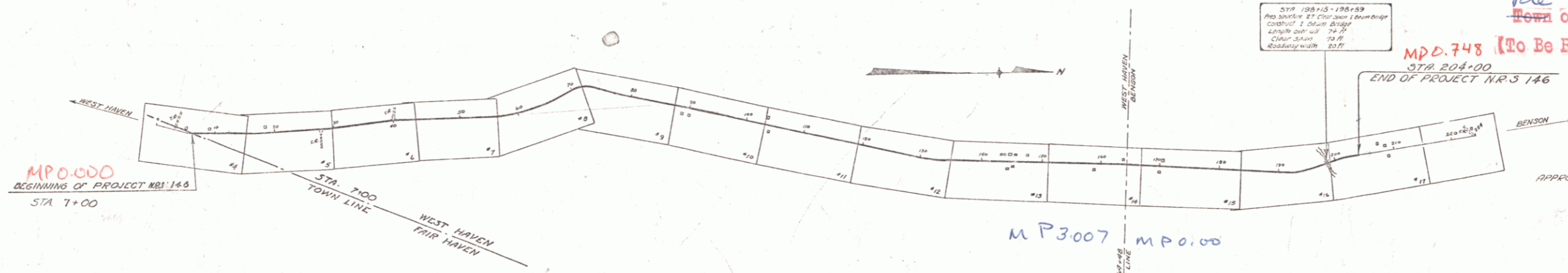
FROM THE FAIR HAVEN-WEST HAVEN
TOWN LINE NORTHERLY 3.730 MILES
TO A POINT 565 FEET NORTH FROM
BRIDGE OVER HUBBARDTON RIVER

LENGTH OF PROJECT INCLUDING BRIDGE
19695.3 FT. = 3.730 MILES
LENGTH OF PROJECT EXCLUDING BRIDGE
19621.3 FT. = 3.716 MILES



RIGHT-OF-WAY DIVISION
TOWN FILE
PERPETUAL
Town of VT 22A

MPD. 743 (To Be Returned To R.O.W. Division)



CONVENTIONAL SIGNS

COUNTY LINE	GROUND ELEVATION
TOWN LINE	FENCE LINE
STONE WALL	UNFENCED PROPERTY
GUARD RAIL	TRAVELLED WAY
RAILROAD	RETAINING WALL
CENTER LINE	SUBGRADE
CHURCH	DROP IN PROFILE
TROLLEY POLE	POWER POLE
TELEPHONE POLE	TELEPHONE POLE
TREES	HEDGE

SCALES

TITLE	1" = 1000 FT.
PLAN	1" = 50 FT.
PROFILE	1" = 50 FT.
CROSS SECTIONS	1" = 5 FT.

These plans are subject to such revisions as may be required by the Bureau of Public Roads or the Commissioner of Highways.

Construction is to be carried on in accordance with the Standard Road and Bridge Specifications of 1930 with all subsequent approved revisions and such specifications and special provisions as are submitted with the plans.

Pin: 00R586
Date: 10/18/1933
Route: VT 22A

APPROVED: *H. E. Burt* October 19, 1933
COMMISSIONER OF HIGHWAYS

SUBMITTED BY ORDER OF THE STATE HIGHWAY BOARD

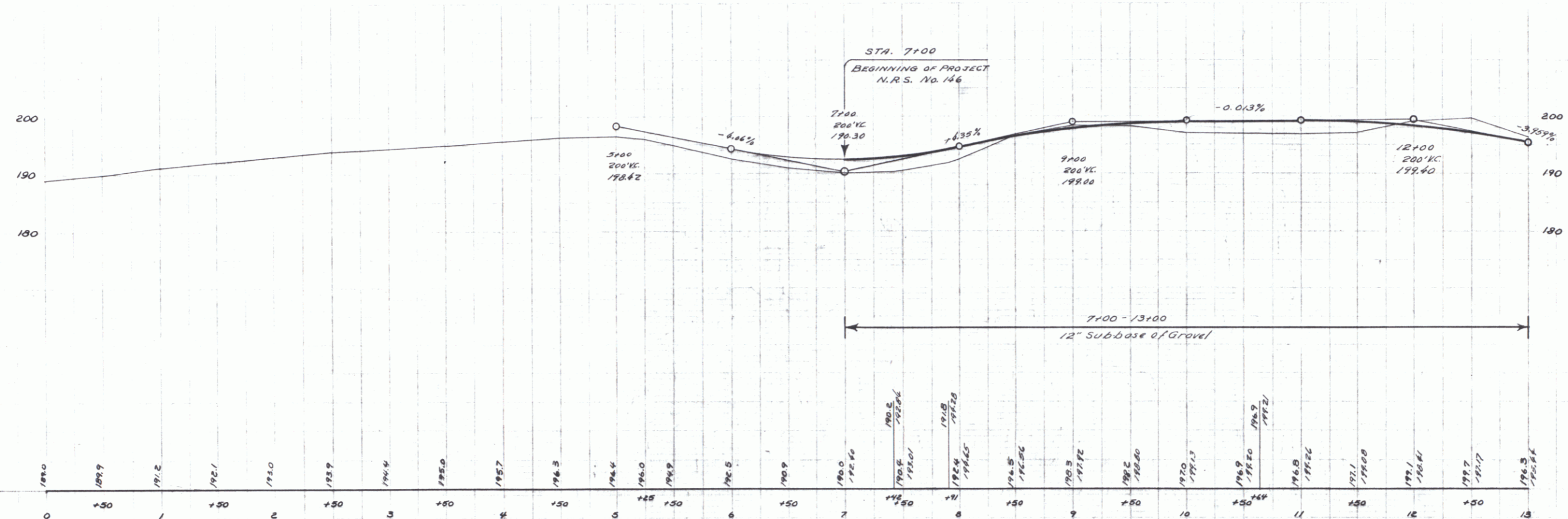
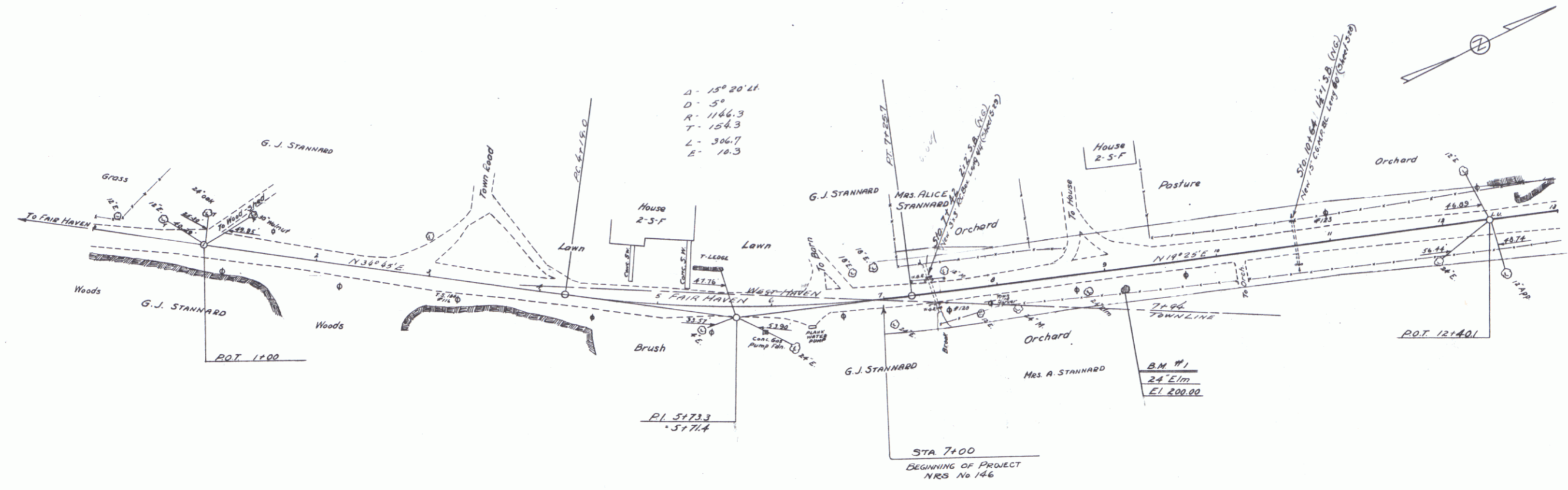
RECOMMENDED: _____
DISTRICT ENGINEER BUREAU OF PUBLIC ROADS

RECOMMENDED FOR APPROVAL: _____
CHIEF ENGINEER BUREAU OF PUBLIC ROADS

APPROVED: _____
DIRECTOR BUREAU OF PUBLIC ROADS

APPROVED: *H. E. Burt*
ROAD ENGINEER

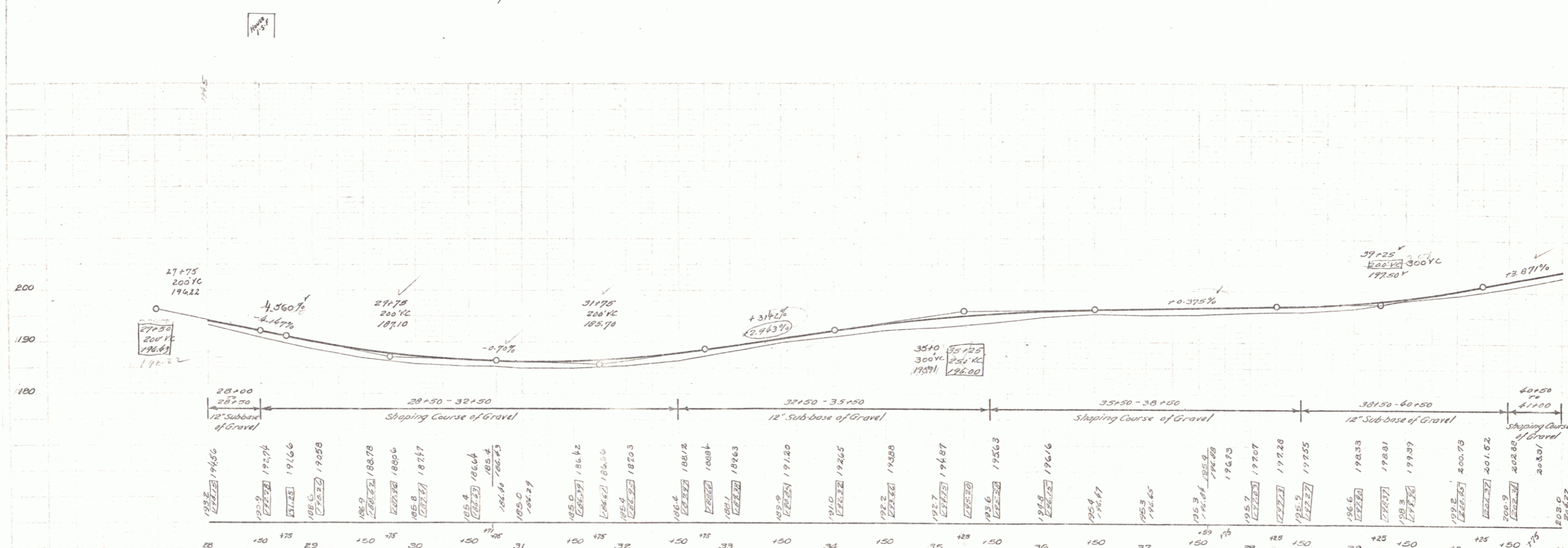
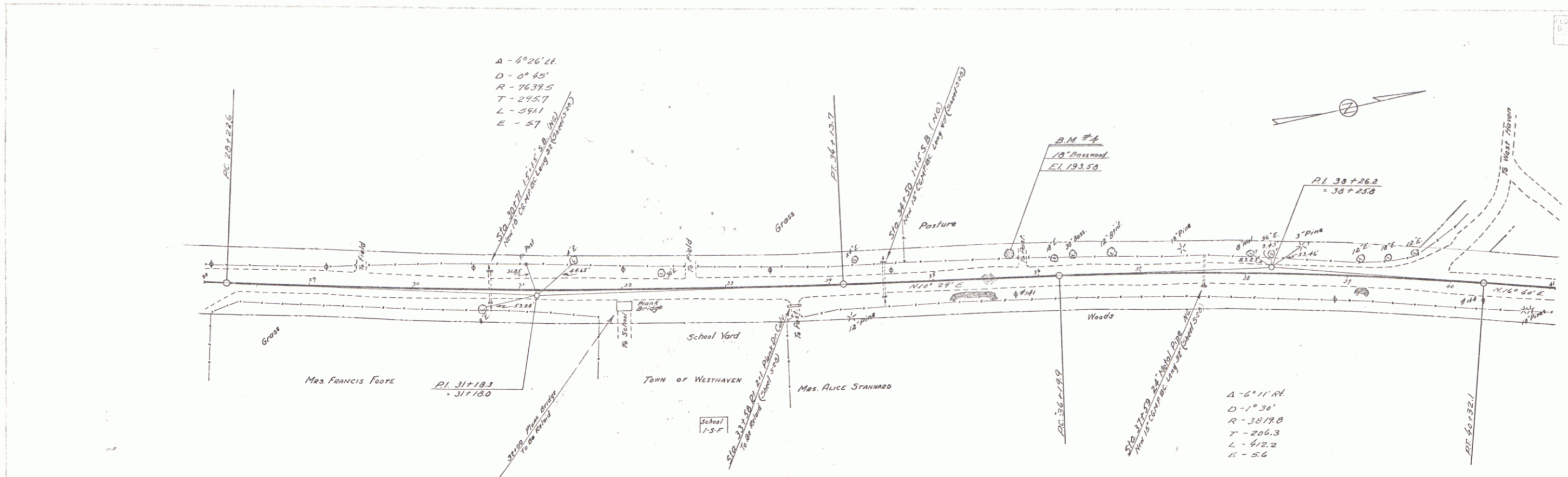
SERIES **NRS** No. **146** FILED
SHEET **1** OF **61**



B.M. #1 Spike in Root of 24" Elm 16 ft. N. of Sta. 9+11 Elev. 200.00

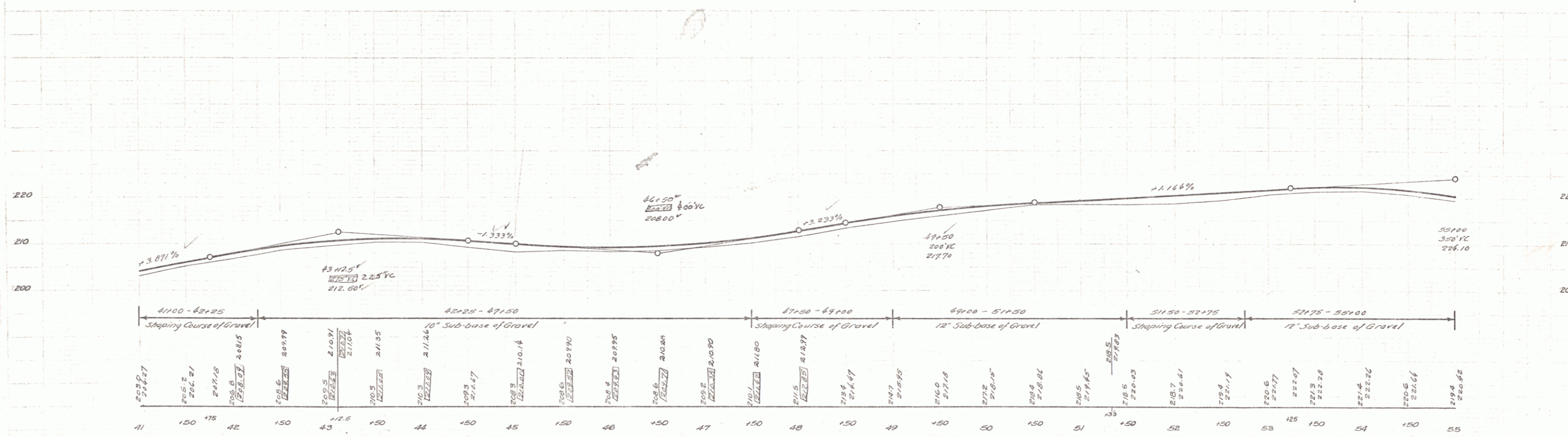
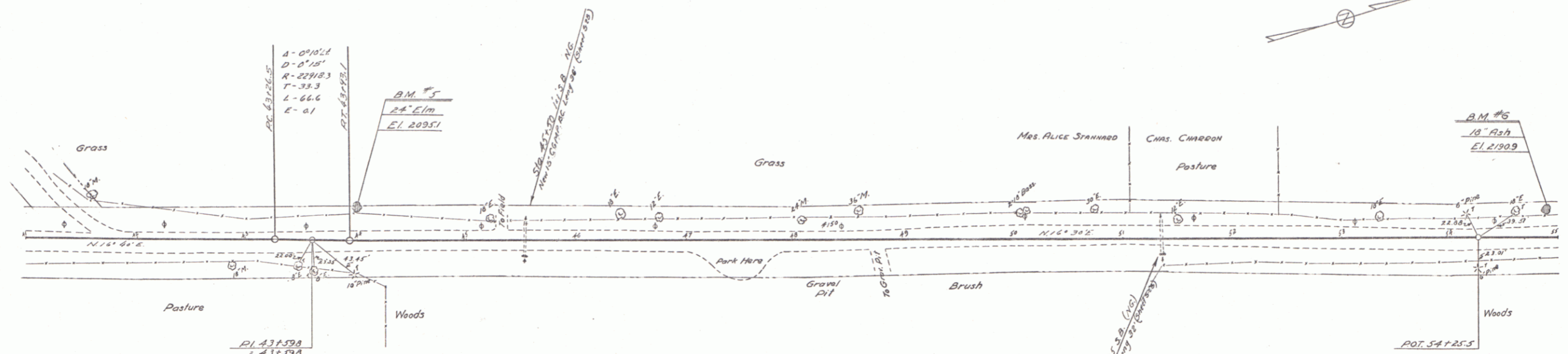
Plan
 1/4" = 100'
 1/8" = 50'

Elevation
 1" = 10'



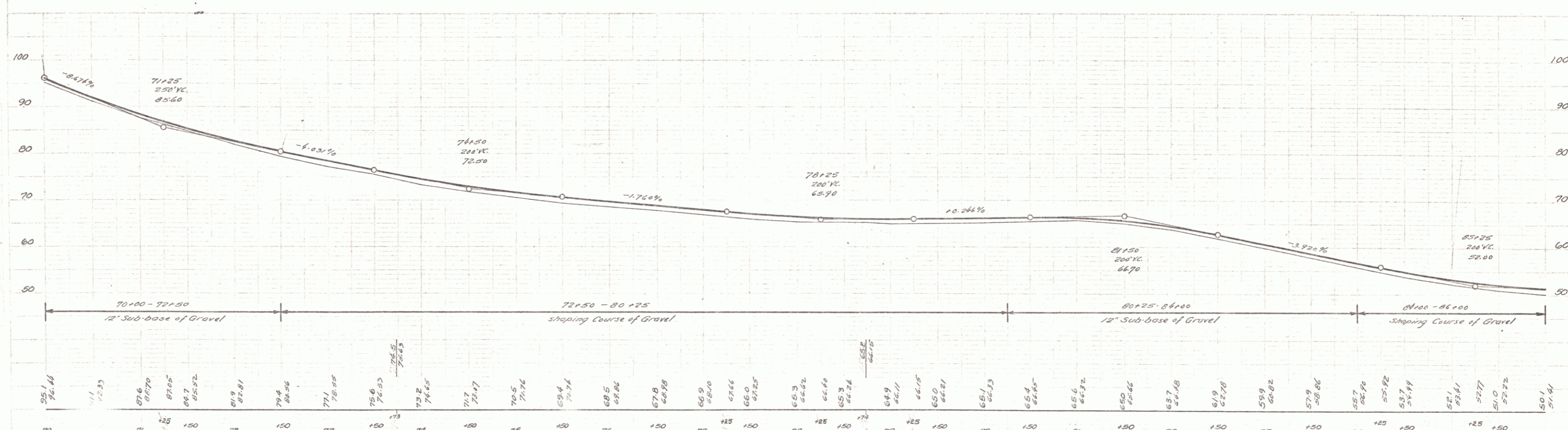
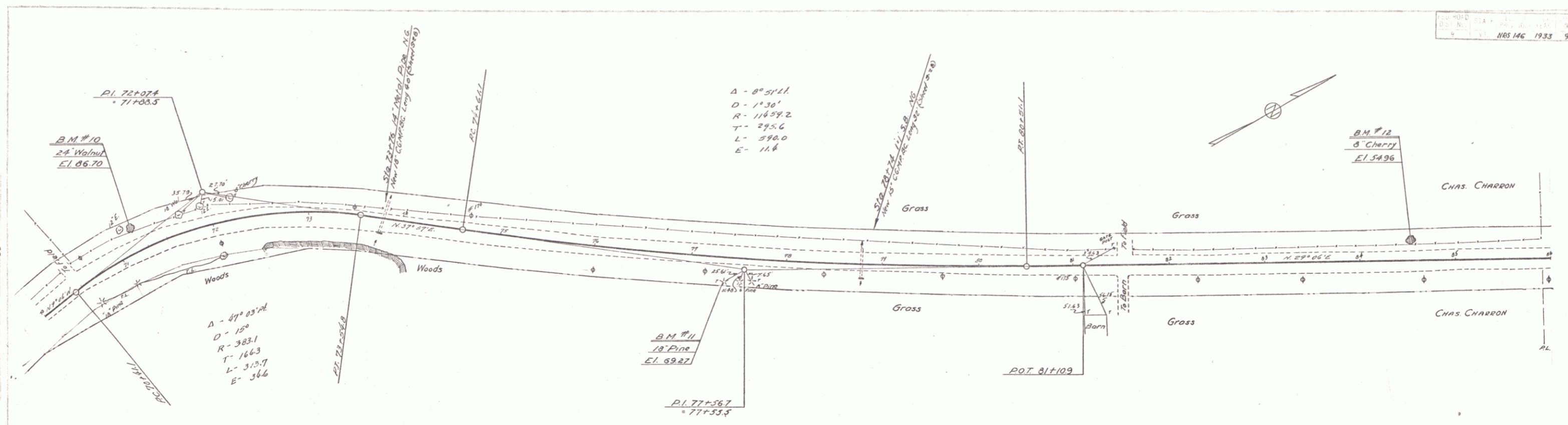
B.M. #4 SPIKE IN ROOT OF 18" BRASS 1917. IN STA. 35+77.11 EL. 193.58

Railway
 F. Hayward
 Griggs
 44/10
 1933



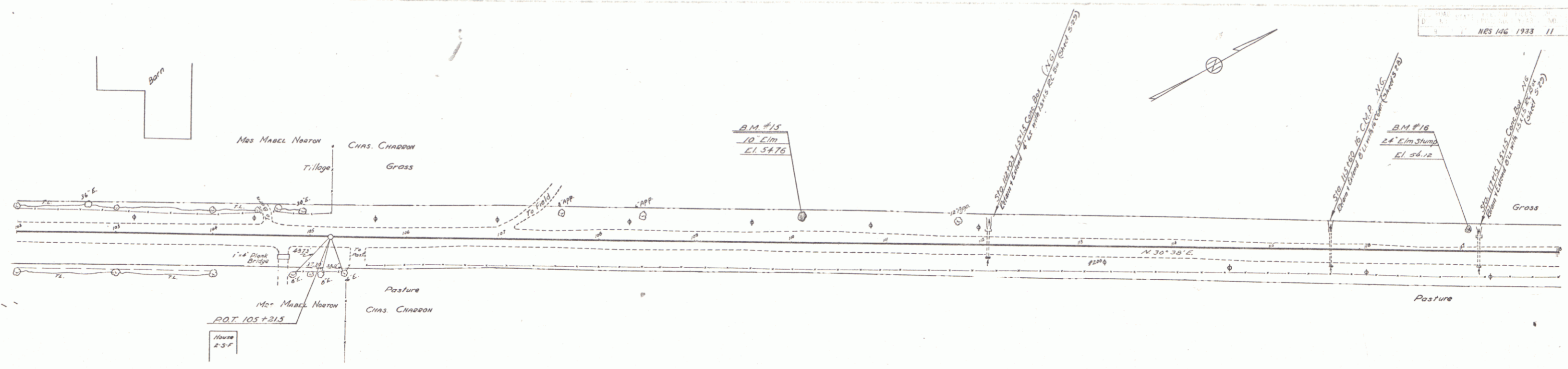
B.M. #5 SPIKE IN ROOT OF 26" ELM 25 FT. W. STA. 41100 ELEV. 209.51
 B.M. #6 " " " " 18" Ash 21 FT. W. STA. 54887 ELEV. 219.09

SERIES NBS No. 146
 Sheet 7 of 61



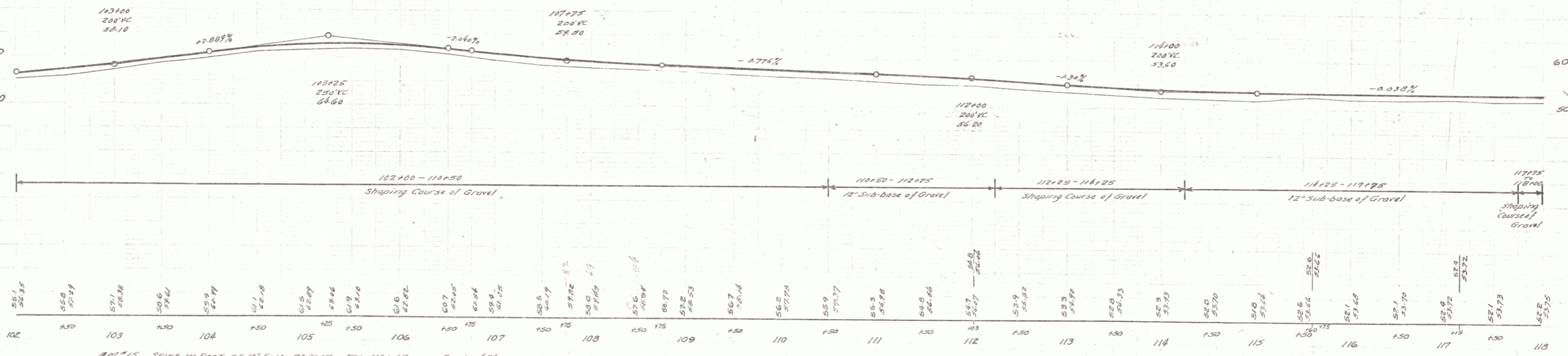
70	71	72	73	74	75	76	77	78	79	80	81	82	83	84	85	86				
55.1	56.4	57.6	58.7	59.4	60.5	61.4	62.5	63.3	64.4	65.1	65.4	66.6	67.7	68.7	69.7	70.1				
70+00	71+00	72+00	73+00	74+00	75+00	76+00	77+00	78+00	79+00	80+00	81+00	82+00	83+00	84+00	85+00	86+00				
B.M. #10	SPINE IN ROOT OF 24 WALNUT		217' LT.	STA. 71+19	ELEV. 66.70		B.M. #11	" " " " 18 PINE		217' RT.	STA. 72+32	ELEV. 62.27		B.M. #12	" " " " 8 CHERRY		177' LT.	STA. 85+50	ELEV. 54.96	

SERIES 146 146 Sheet 9 of 61



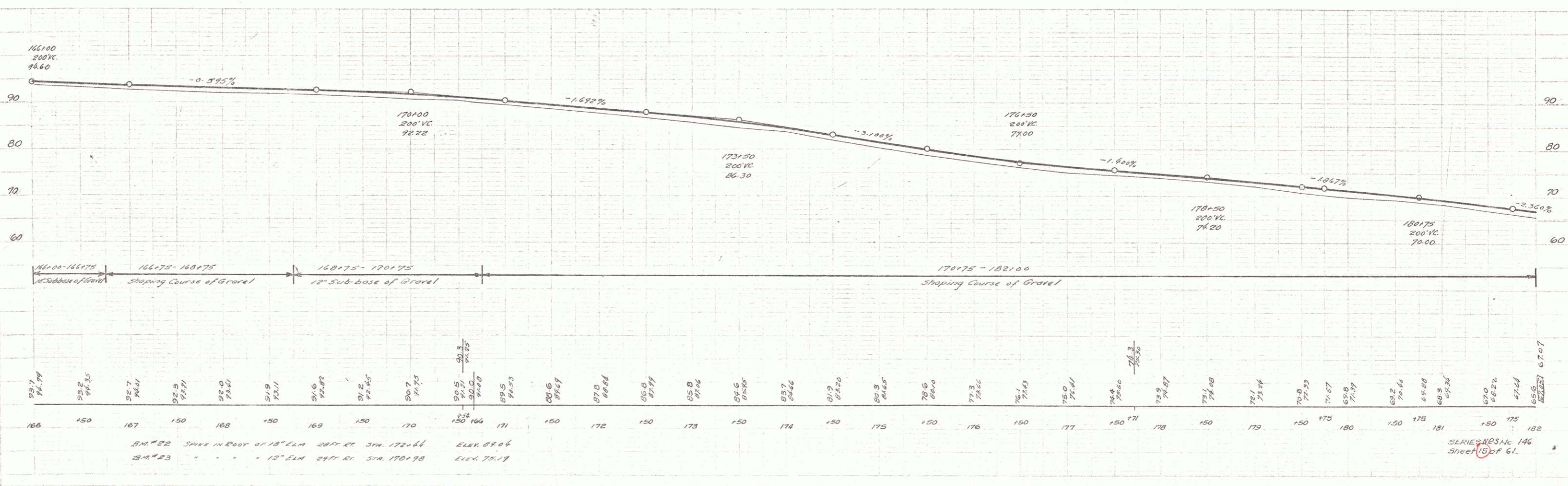
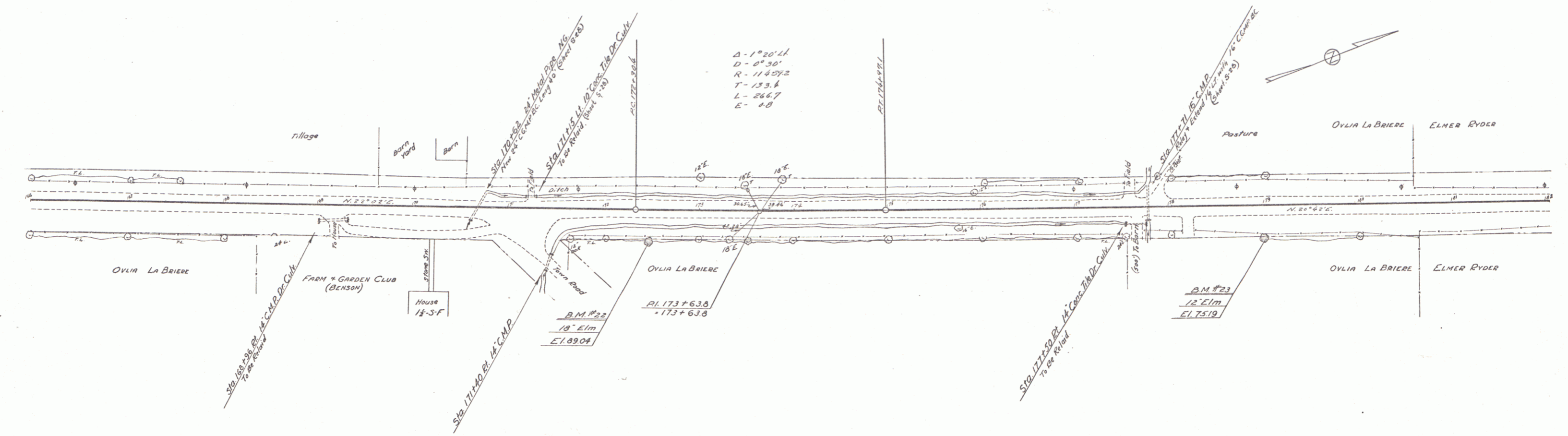
Aultram
 F. Hyman
 Griggs
 720000

113100
 208' VC
 38.10



B.M. #15 SPINE IN ROOT OF 18' ELM 23' 24" LT. STA. 110+09 ELEV. 54.74
 B.M. #16 " " TOP OF 24' ELM STUMP 22' 11" STA. 117+85 ELEV. 54.18

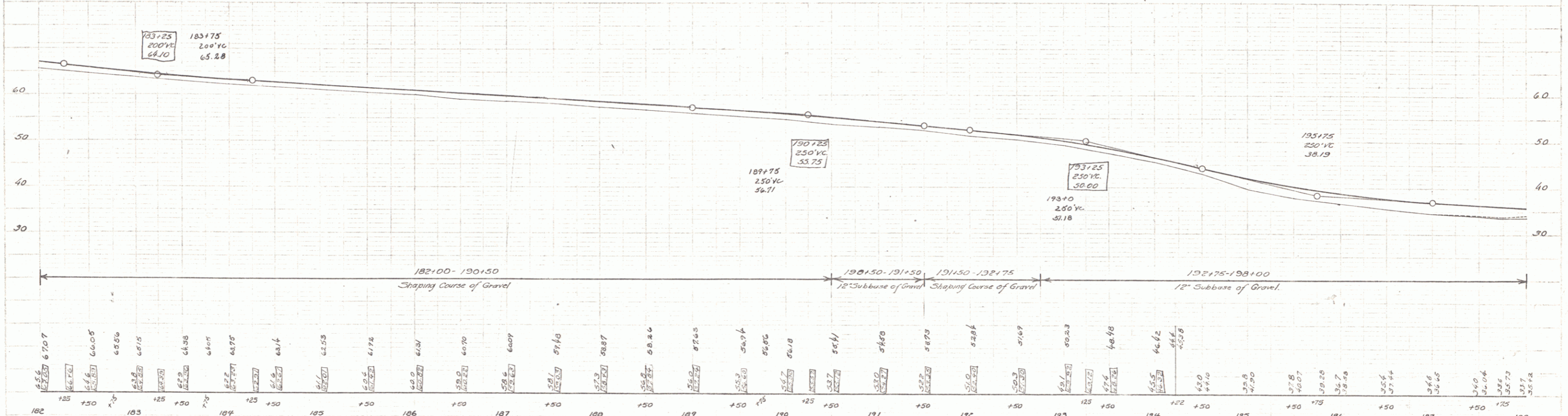
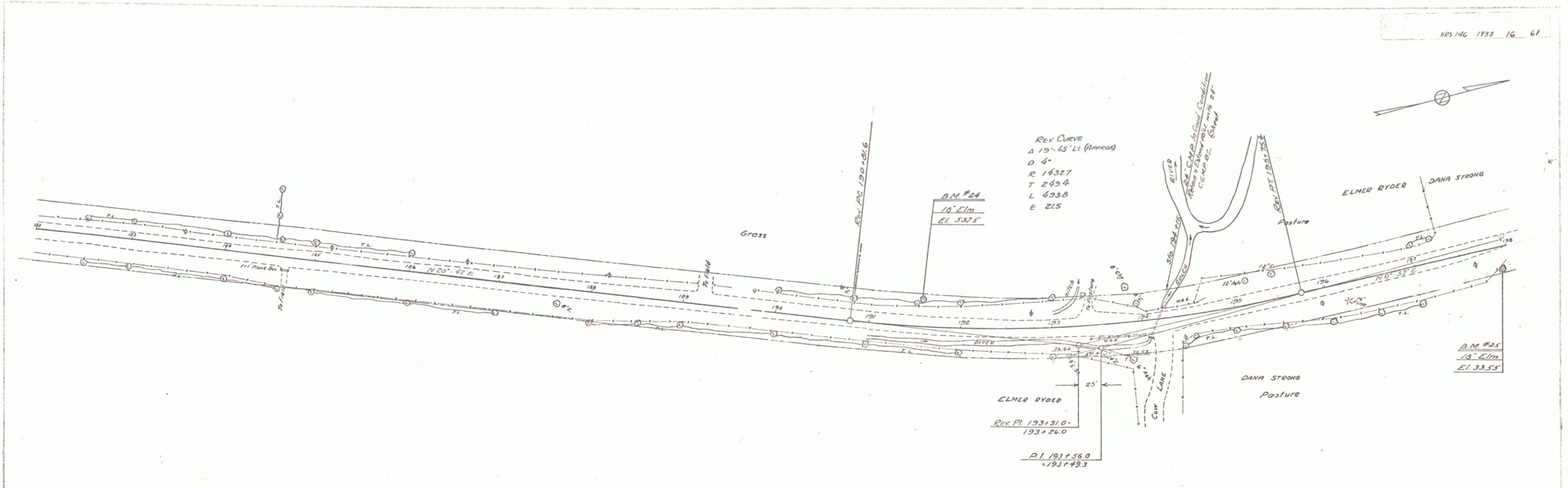
PLAN
 Highway
 Griggs
 4 1/2 in
 TYPICAL



SERIES 146
 Sheet 15 of 61

PROPOSED
GRAVEL
ROADWAY
TRAFFIC
94500

PROPOSED
GRAVEL
ROADWAY
TRAFFIC
94500

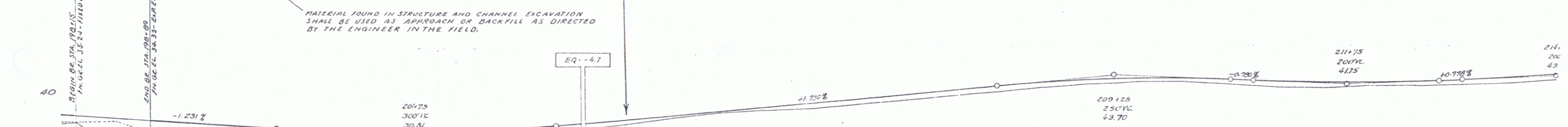
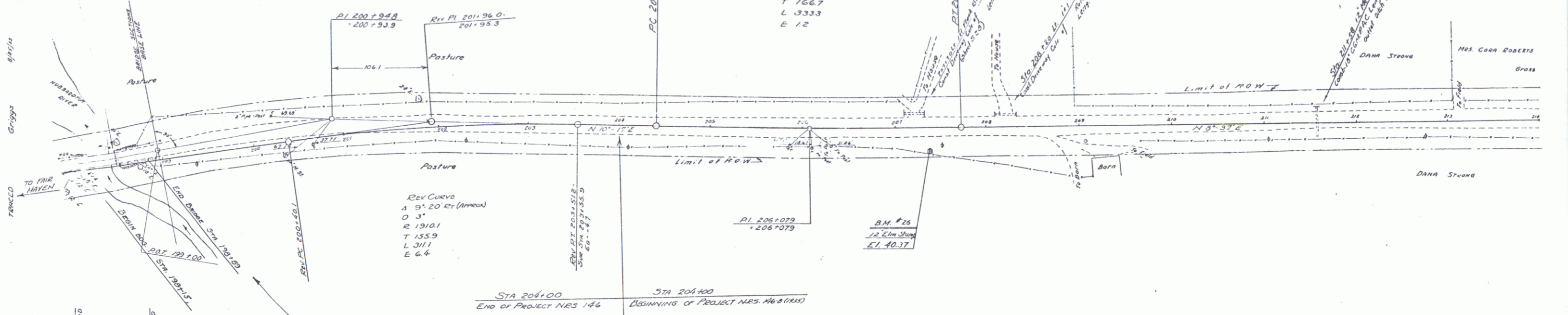


B.M. #24 Spike in Root of 18" Elm 23' Lt. of Sta. 191+56 Elev. 53.75
 B.M. #25 " " " " " 27' Rt. of Sta. 197+92 Elev. 33.55

SERIES N.E.S. NO. 146
 SHEET 16 OF 61

79 198-5-35+89
SHEETS 21-22-15
CONSTANT - 24' - 0" - 0.000
LENGTH OF - 7.75
CLEARANCE - 7.75
PROPORTION - 25/1

CURVE
A 1° 40' LT
D 0° 30'
E 11439.2
T 166.7
L 333.3
E 12

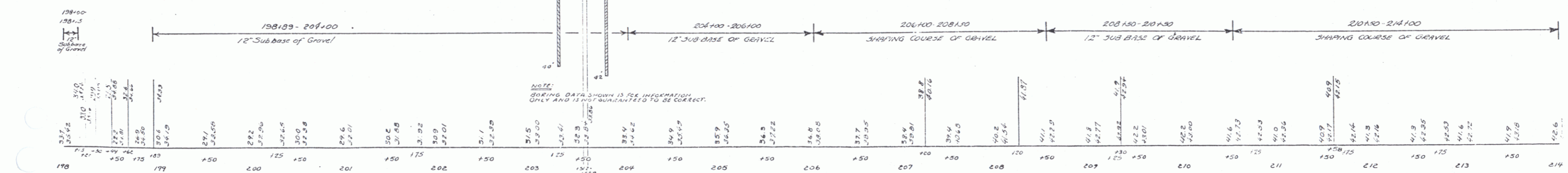


PROJECT NRS. 146
INDEX OF SHEETS

SHEET NO. 1 PLAN AND PROFILE
 . . . 42.0 S 1/2 30' NO. 70 (MODIFIED FOR 30° SKEW)
 . . . 43.0 ABUTMENT DETAILS
 . . . 44.0 S.B. NO. 2 S.T.D. DETAILS S 220, S 204, S 206, S 220, S 221
 . . . 45.0 S.B. NO. 2A S.T.D. DETAILS S 224, S 227, S 229
 . . . 46.0 S.B. NO. 2B S.T.D. DETAILS S 241
 . . . 47.0 S.B. NO. 3 SKEW ENDS 30°
 . . . 48.0 S.B. NO. 5 CABLE RAIL
 . . . 21 S.B. NO. 11 BARRICADES, ETC.

PROJECT NRS. 146
ESTIMATE OF QUANTITIES

ITEM NO.	DESCRIPTION	QUANTITY
14	CHANNEL EXCAVATION	12.5 Cu.Yd.
15	STRUCTURE EXCAVATION	13.9 Cu.Yd.
32A	CONCRETE CLASS A	7.4 Cu.Yd.
33B	CONCRETE CLASS B	42.0 Cu.Yd.
34	REINFORCING STEEL	17,680 LBS.
35B	STEEL SUPERSTRUCTURE (74,103")	1 LUMP
25	TRAFFIC MAINTAINED + REMOVAL OF PRESENT SUPERSTRUCTURE	1 LUMP
56	TIMBER PILING	600 L.F.T.
62	RIP RAP FOR BANK PROTECTION	60 Cu.Yd.
74B	GRAVEL COBBLE CUTTER	16.50 Yds
67	CABLE RAIL	100 L.F.T.



B.M. #26 Spike in Root 12' Elm Stump 25' RI. of STA. 207+35 ELEV. 41.40.37