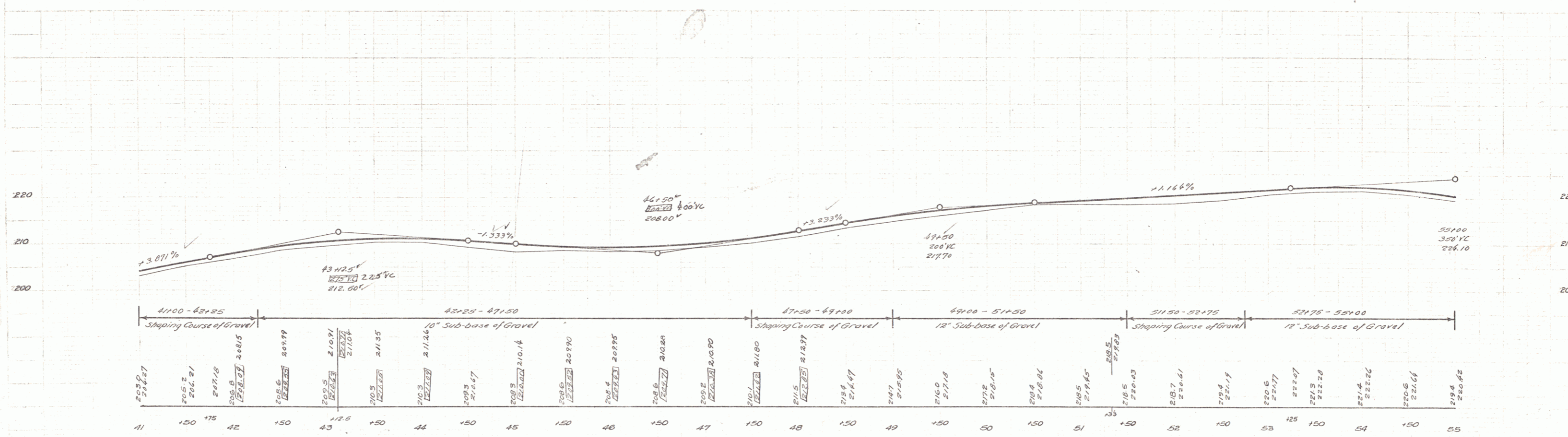
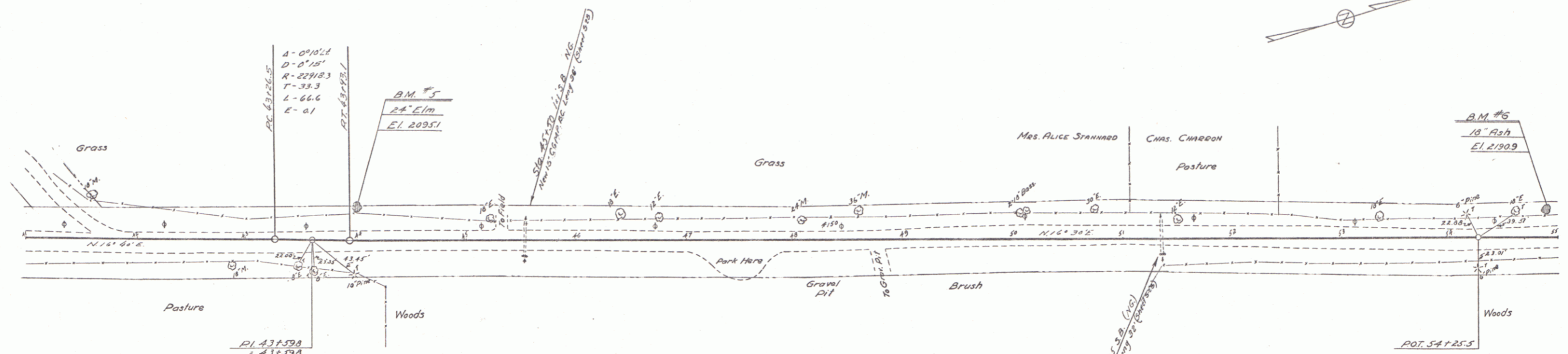


Palmetto
 R. Hayward
 Griggs
 4/1/30



B.M. #5 SPIKE IN ROOT OF 26" ELM 25 FT. E. STA. 41100 ELEV. 209.51
 B.M. #6 " " " " 18" Ash 21 FT. E. STA. 54187 ELEV. 219.09

SERIES NPS No. 146
 Sheet 7 of 61