

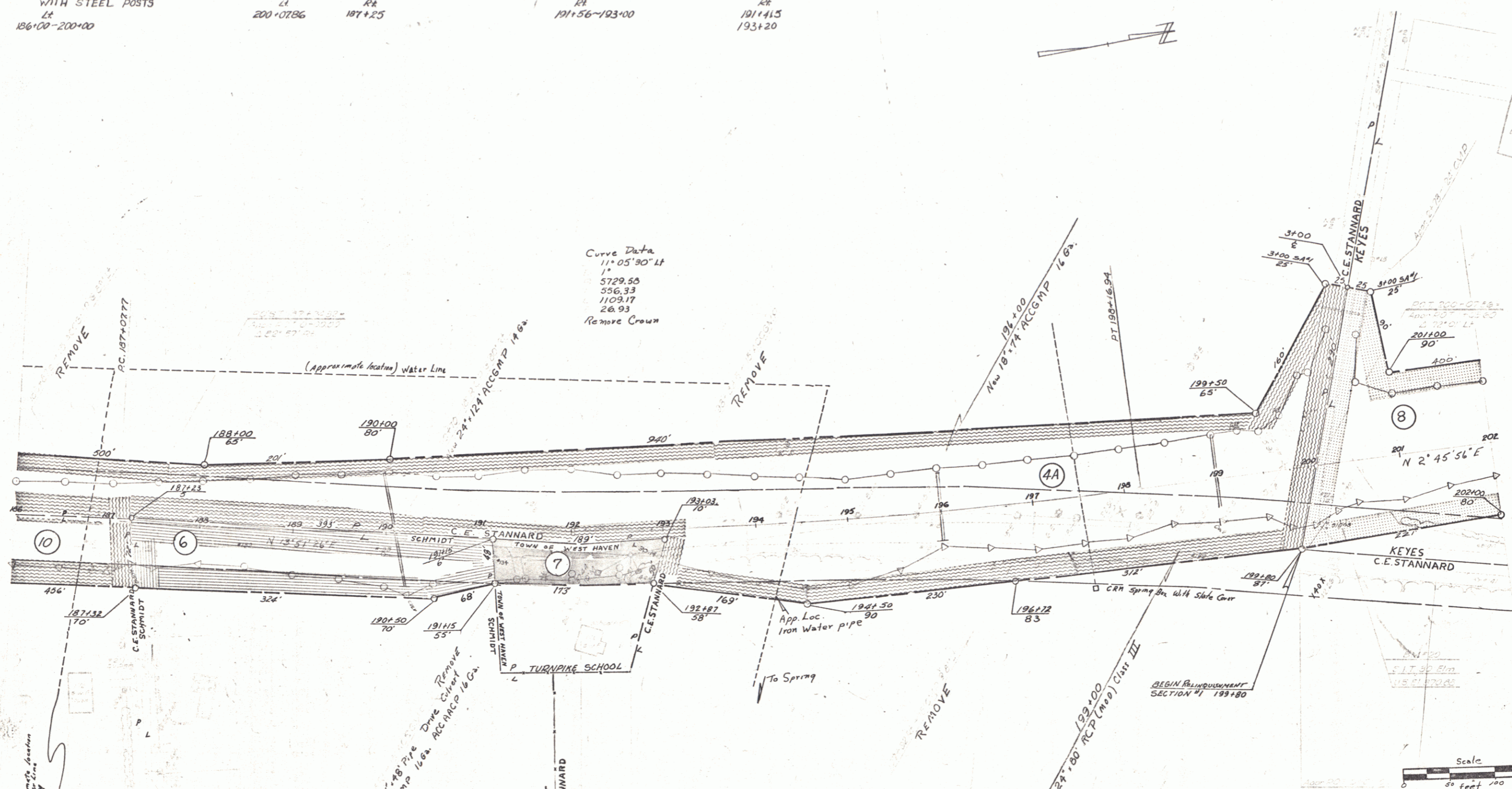
THREE CABLE GUARD RAIL
WITH STEEL POSTS
LT
186+00-200+00

CONSTRUCT APPROACH
LT RA
200+0786 187+25

CONSTRUCT TURNOUT
RA
191+56-193+00

CONSTRUCT DRIVE
RA
191+415
193+20

Curve Data
11° 05' 30" LT
1'
5729.55
556.33
1109.17
26.93
Remove Crown



VERMONT DEPARTMENT OF HIGHWAYS
RIGHT-OF-WAY PLANS
PROJECT: FAIR HAVEN - WEST HAVEN
No. S 0159(1)
SHEET 15 OF 18