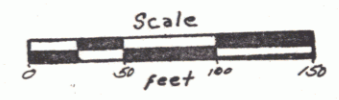
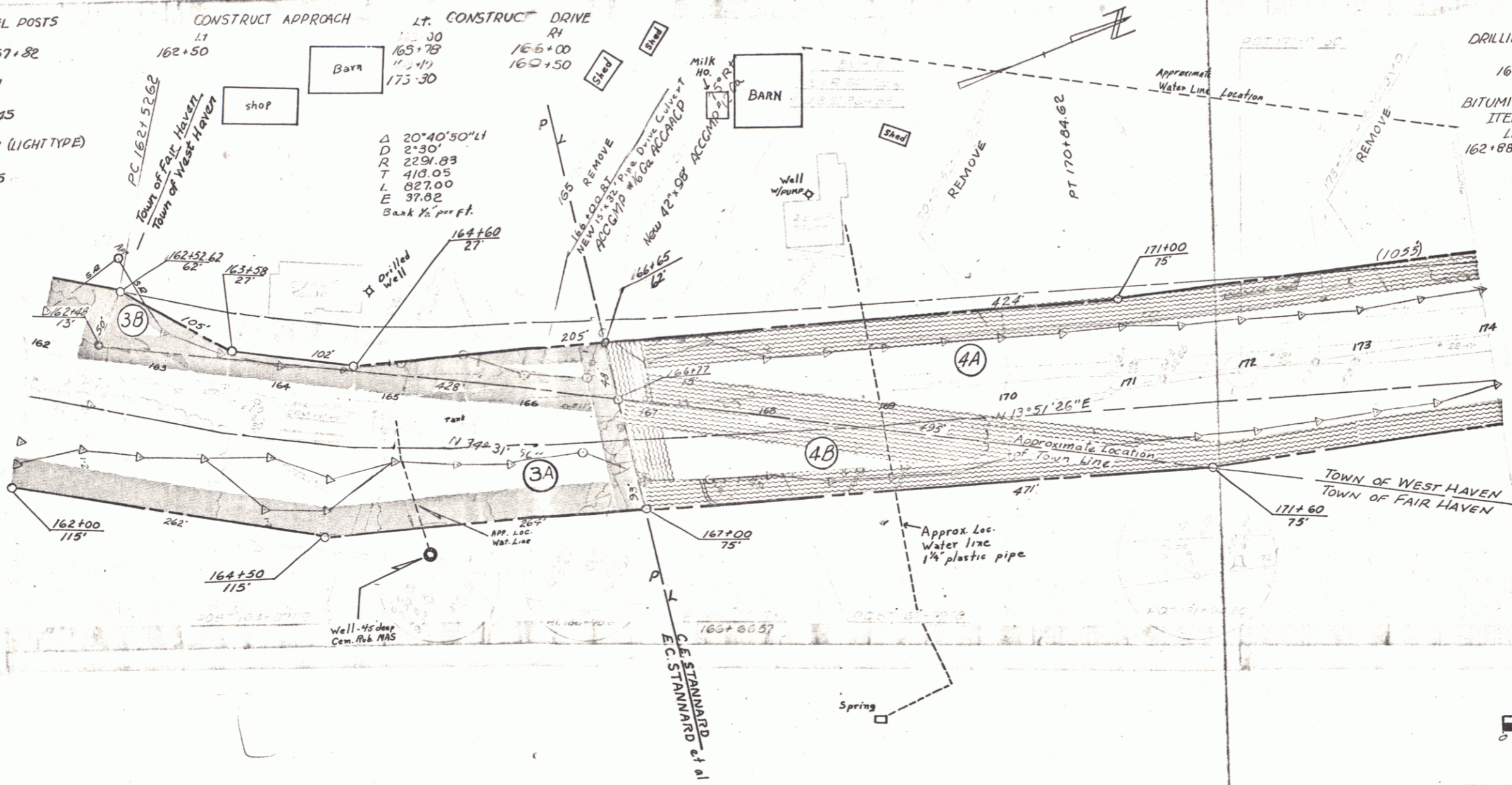


THREE CABLE GUARD RAIL WITH STEEL POSTS
 Lt 165+90 ~ 167+34 Rt 166+70 ~ 167+82
 UNCLASSIFIED CHANNEL EXCAVATION
 Rt 166+95 ~ 167+45
 STONE FILL FOR SLOPE PROTECTION (LIGHTTYPE)
 Rt 166+95 ~ 167+45

CONSTRUCT APPROACH Lt. CONSTRUCT DRIVE
 Lt 162+50 Rt 165+75
 Barn 165+75
 shop 173+30

Δ 20°40'50" Lt
 D 2°30'
 R 2291.03
 T 413.05
 L 327.00
 E 37.82
 Bank 1/2" per ft.

DRILLING AND BLASTING OF SOLID ROCK
 SUB-GRADE
 162+00 - 165+70
 BITUMINOUS CONCRETE CURB
 ITEM 555 TYPE II
 Lt 162+88 - 164+50



VERMONT DEPARTMENT OF HIGHWAYS
 RIGHT-OF-WAY PLANS
 PROJECT: FAIR HAVEN - WEST HAVEN
 No. S 0159(1)
 SHEET 13 OF 18