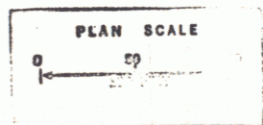
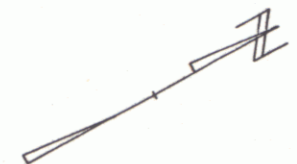
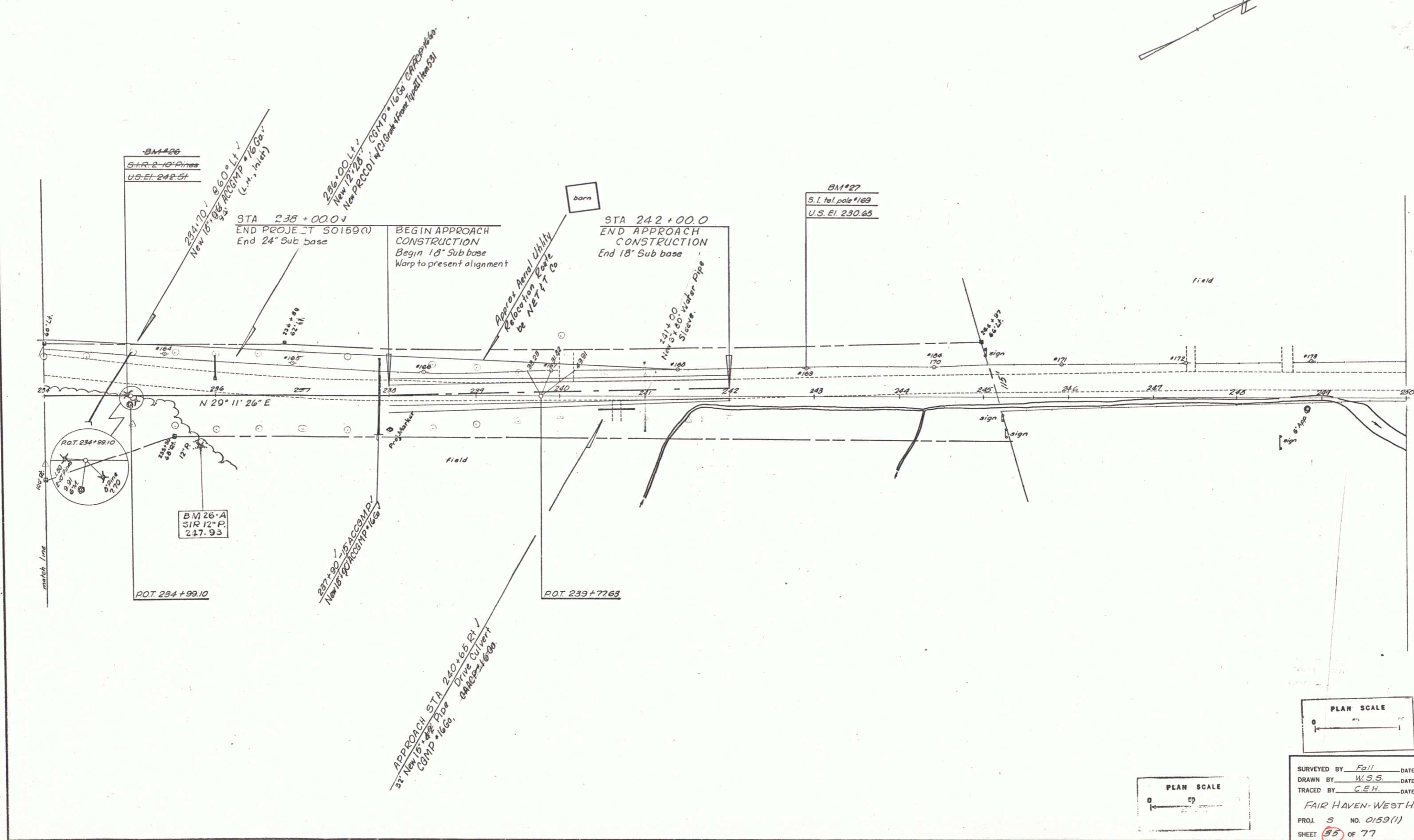


THREE CABLE GUARD RAIL
WITH STEEL POSTS
L+
234+00-237+93

CONSTRUCT DRIVE
L+ APPROACH STA 240+00
R+ APPROACH STA 240+50

DRILLING AND BLASTING OF
SOLID ROCK SUB-GRADE
234+00-235+00

TREATED TIMBER CURB
(PAVED SHOULDER) (Item 554)
L+
234+00-236+06



SURVEYED BY Fall DATE 7-63
DRAWN BY W.S.S. DATE 10-63
TRACED BY C.E.H. DATE 11-63
FAIR HAVEN - WEST HAVEN
PROJ. S. NO. 0159(1)
SHEET 55 OF 77

10