

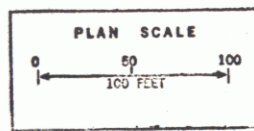
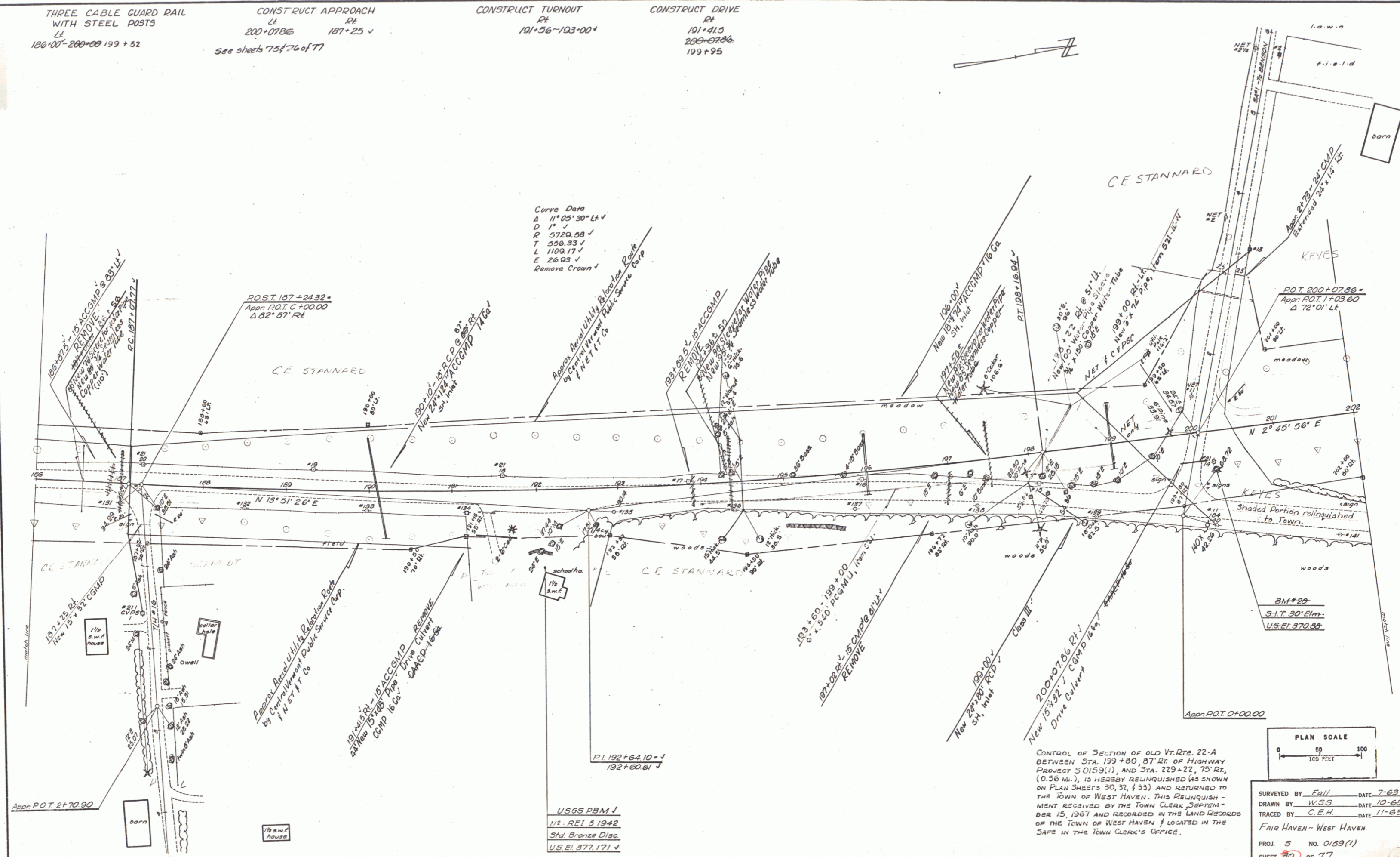
THREE CABLE GUARD RAIL
WITH STEEL POSTS
LT
186+00-200+00 199+52

CONSTRUCT APPROACH
LT RT
200+0786 187+25 ✓
See sheets 75 & 76 of 77

CONSTRUCT TURNOUT
RT
191+56-193+00 ✓

CONSTRUCT DRIVE
RT
101+415
200+0786
199+95

Curve Data
Δ 11° 05' 30" LT ✓
D 1' ✓
R 5720.58 ✓
T 256.33 ✓
L 1108.17 ✓
E 26.03 ✓
Remove Crown ✓



CONTROL OF SECTION OF OLD VT. RTE. 22-A
BETWEEN STA. 199+80, BT. RT. OF HIGHWAY
PROJECT S 0153(1), AND STA. 219+22, 75' RT.,
(0.56 MI.), IS HEREBY RELINQUISHED (AS SHOWN
ON PLAN SHEETS 30, 32, & 33) AND RETURNED TO
THE TOWN OF WEST HAVEN. THIS RELINQUISH-
MENT RECEIVED BY THE TOWN CLERK, SEPTEM-
BER 15, 1967 AND RECORDED IN THE LAND RECORDS
OF THE TOWN OF WEST HAVEN & LOCATED IN THE
SAFE IN THE TOWN CLERK'S OFFICE.

USGS PBM 1
N.S. REI 5 1942
Std. Bronze Disc
U.S. #1 377,171 ✓

SURVEYED BY Fall DATE 7-63
DRAWN BY W.S.S. DATE 10-63
TRACED BY C.E.H. DATE 11-63
FAIR HAVEN - WEST HAVEN
PROJ. 5 NO. 0153(1)
SHEET 30 OF 77