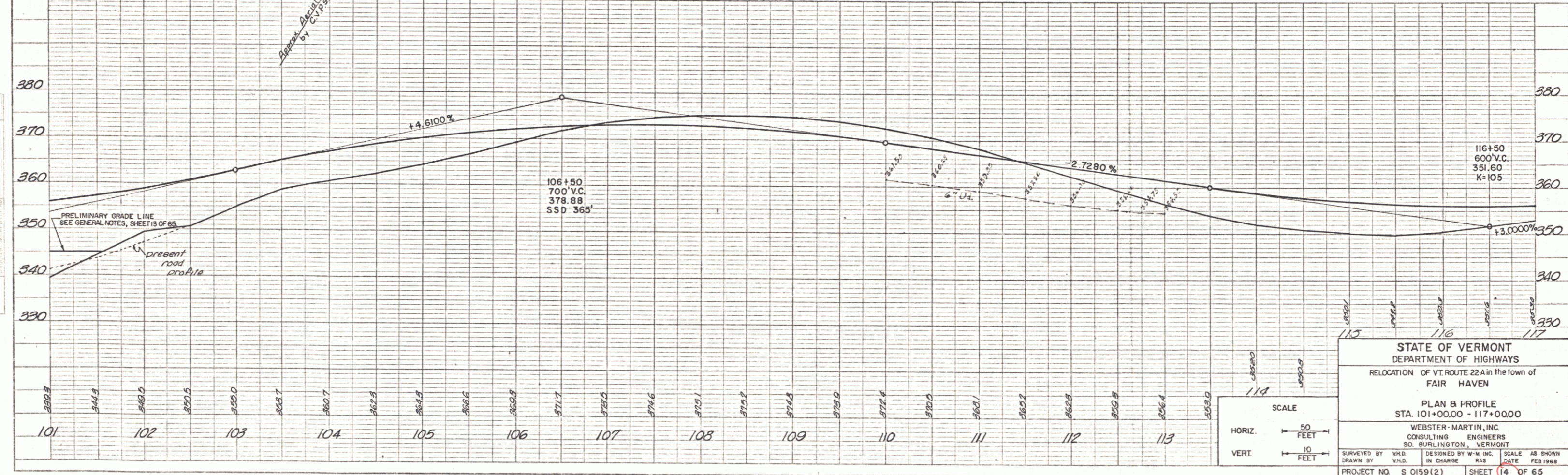
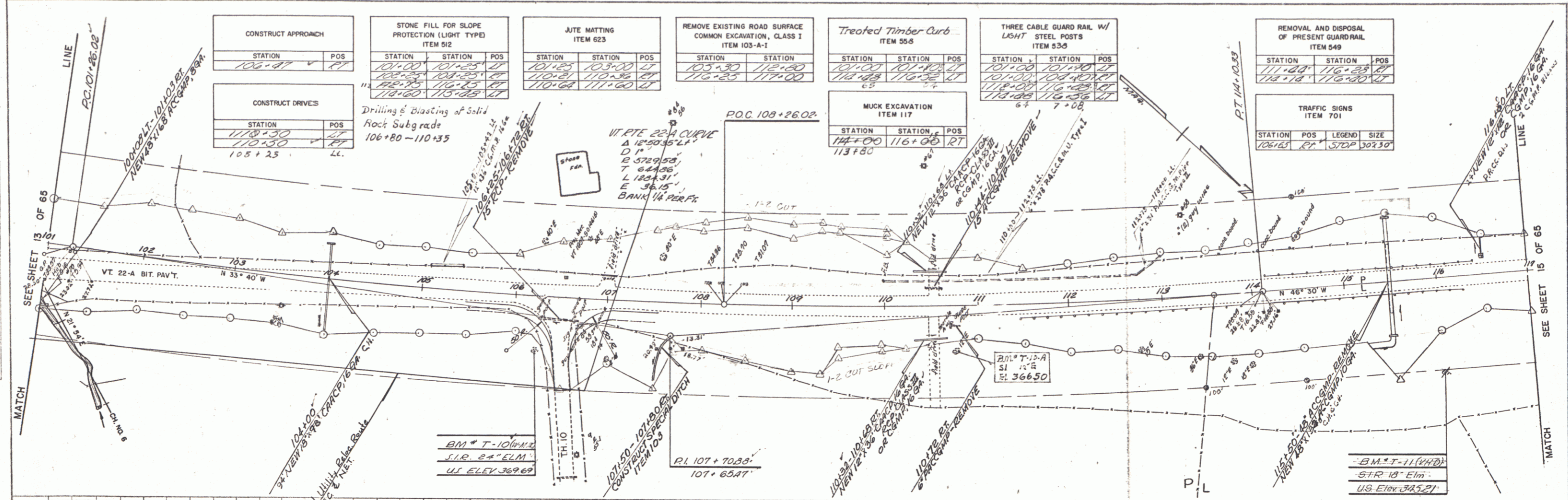


PLAN  
 DATE: 2-1-68  
 DRAWN BY: F. J. CARLSON  
 CHECKED BY: W. M. MARTIN, INC.  
 NO. 101

PROFILE  
 DATE: 2-1-68  
 DRAWN BY: F. J. CARLSON  
 CHECKED BY: W. M. MARTIN, INC.  
 NO. 101



STATE OF VERMONT  
 DEPARTMENT OF HIGHWAYS  
 RELOCATION OF VT. ROUTE 22A in the town of FAIR HAVEN

PLAN & PROFILE  
 STA. 101+00.00 - 117+00.00

WEBSTER-MARTIN, INC.  
 CONSULTING ENGINEERS  
 50 BURLINGTON, VERMONT

SURVEYED BY: W.M. MARTIN, INC. DESIGNED BY: W.M. MARTIN, INC. SCALE: AS SHOWN  
 DRAWN BY: F. J. CARLSON IN CHARGE: W. M. MARTIN, INC. DATE: FEB 1968

PROJECT NO. S 0159(2) SHEET 14 OF 65

PLATE 1: PLAN, PROFILE, & P. & P. E. SHEET  
 REEFER & SENECA CO., NEW YORK  
 V. E. C. 101 24850