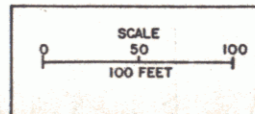
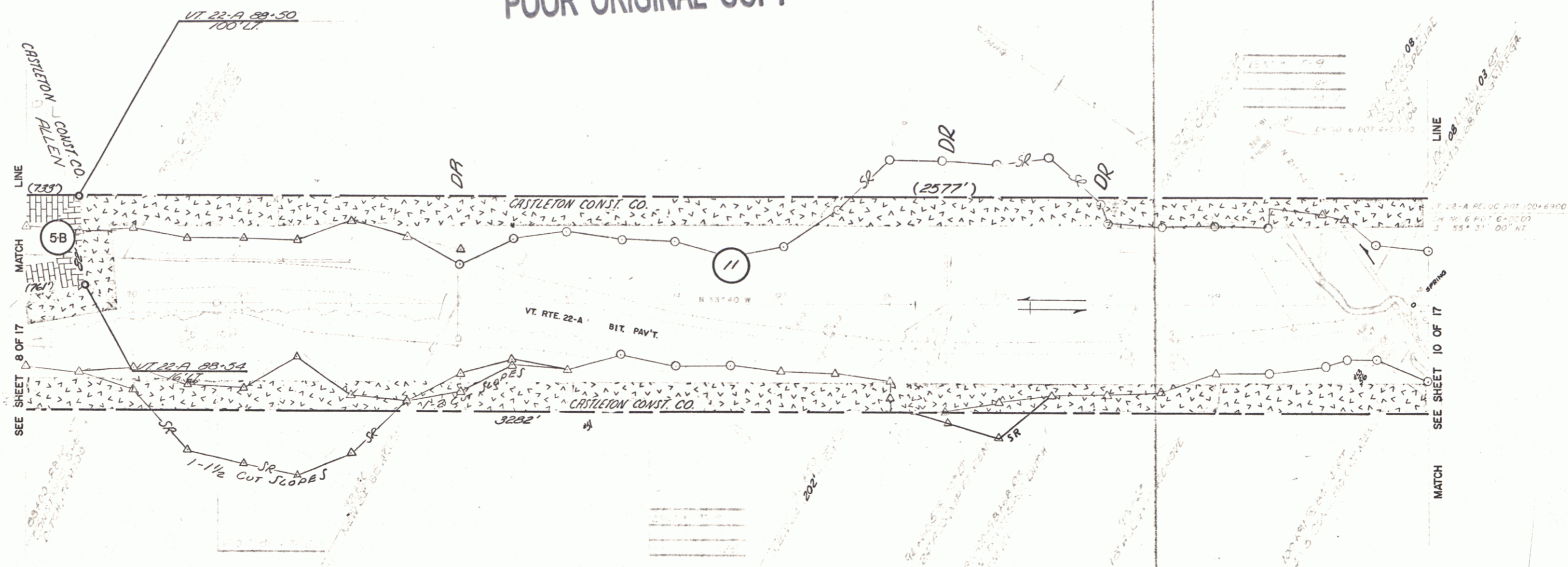


POOR ORIGINAL COPY



STATE OF VERMONT DEPARTMENT OF HIGHWAYS			
RELOCATION OF US ROUTE 22-A in the town of FAIR HAVEN PLAN STA. 88+00.00 - 101+00.00			
ALPHEUS MARTIN, INC. CONSULTING ENGINEERS			
PROJECT NO.	DATE	SHEET	13A
VE HWY DEPT.	AMM	PAR	APRIL 1987
JO		9	17
S0159(2)ROW			