

Notes
 Drives are to be constructed with a minimum width of 12 feet and a flare radius of at least 20 feet or as directed by the Resident Engineer.

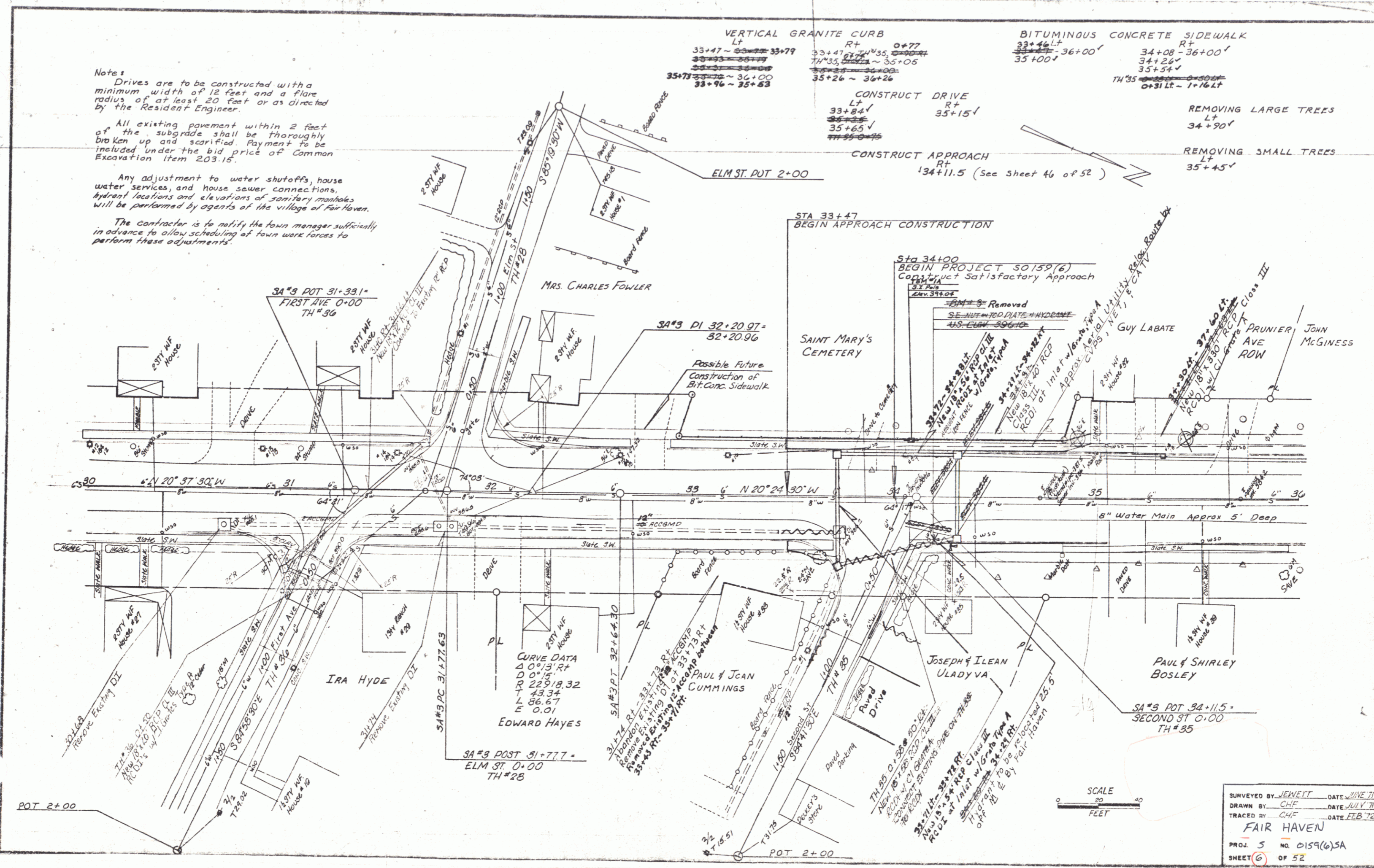
All existing pavement within 2 feet of the subgrade shall be thoroughly broken up and scarified. Payment to be included under the bid price of Common Excavation Item 203.16.

Any adjustment to water shutoffs, house water services, and house sewer connections, hydrant locations and elevations of sanitary manholes will be performed by agents of the village of Fair Haven.

The contractor is to notify the town manager sufficiently in advance to allow scheduling of town work forces to perform these adjustments.

VERTICAL GRANITE CURB	BITUMINOUS CONCRETE SIDEWALK
LT 33+47 ~ 33+79	RT 33+46 ~ 36+00
TH#35	TH#35
33+96 ~ 35+53	34+08 ~ 36+00
	34+26 ~ 35+54
	TH#35
	0+31 Lt - 1+16 Lt

CONSTRUCT DRIVE	REMOVING LARGE TREES
LT 33+84	LT 34+90
RT 35+15	RT 35+45
TH#35	
CONSTRUCT APPROACH	REMOVING SMALL TREES
RT 134+11.5 (See Sheet 46 of 52)	LT 35+45



SURVEYED BY JEWETT DATE JUNE 71
 DRAWN BY CHF DATE JULY 71
 TRACED BY CHF DATE FEB 72
FAIR HAVEN
 PROJ. 5 NO. 0159(6)SA
 SHEET 6 OF 52