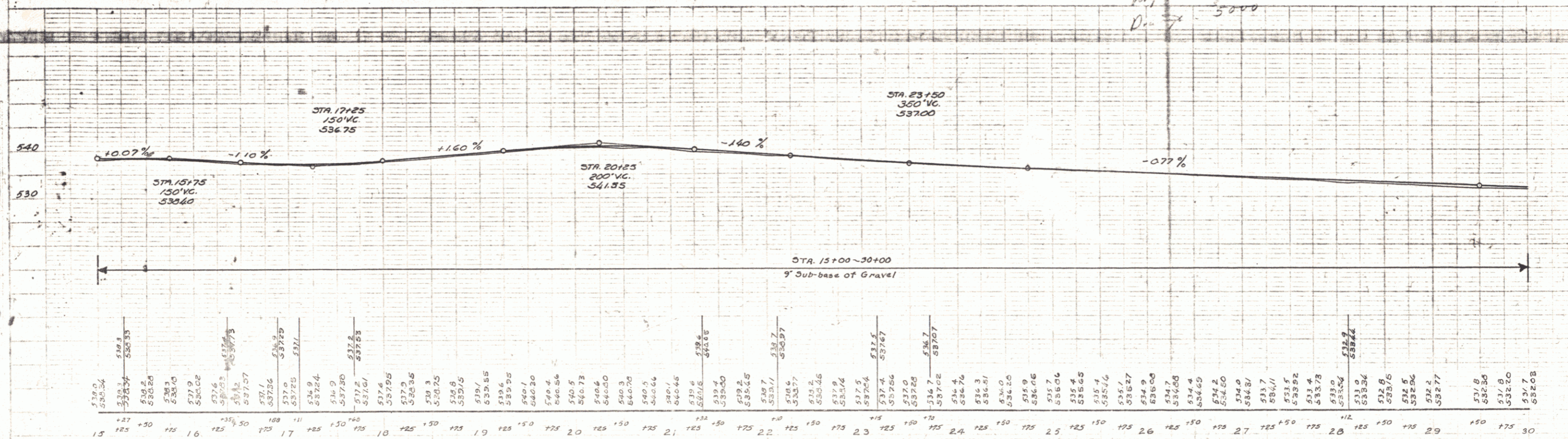
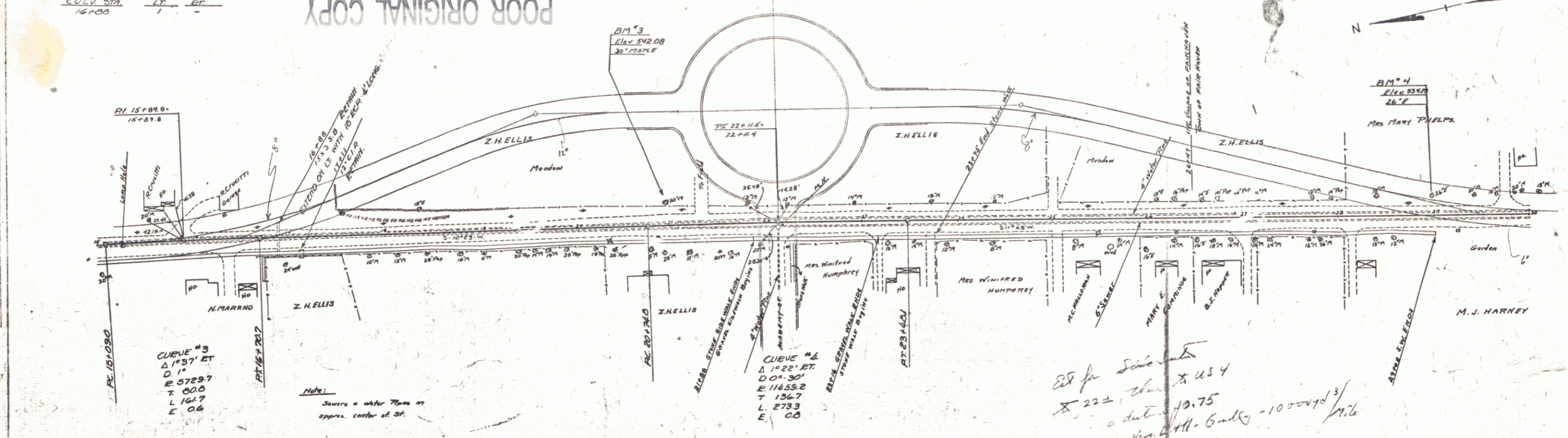


POOR ORIGINAL COPY
 POOR ORIGINAL COPY

PIPE CULVERT REPAIRS REQUIRED
 STA. 16+00 L 10' EXTEND CEM. 10' 4'

WOOD GUIDE POSTS REQUIRED
 CULV. STA. LT. RT.
 16+00 1 -

Barrett
 No. 31
 1925



B.M. #3 Spike in Root 30' Maple 21.5' LT Sta. 20+96 E1.542.08
 B.M. #4 26' Elm 19.5' LT Sta. 20+97 E1.534.13

FILE HARNEY
 Sheet 4

WOOD GUIDE POSTS REQUIRED

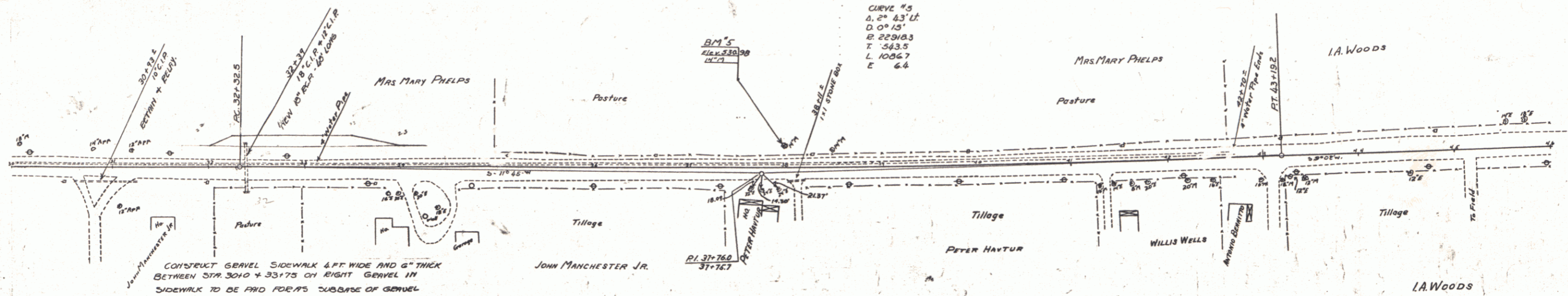
CULV. STA.	LT.	RT.
32+39	2	2

NEW BENT CONC PIPE CULVERTS REQUIRED

STA	DIAM.	LENG.	CL. TO
32+39	18"	56	3.5 CY.

RELAYING PIPE CULVERTS REQUIRED

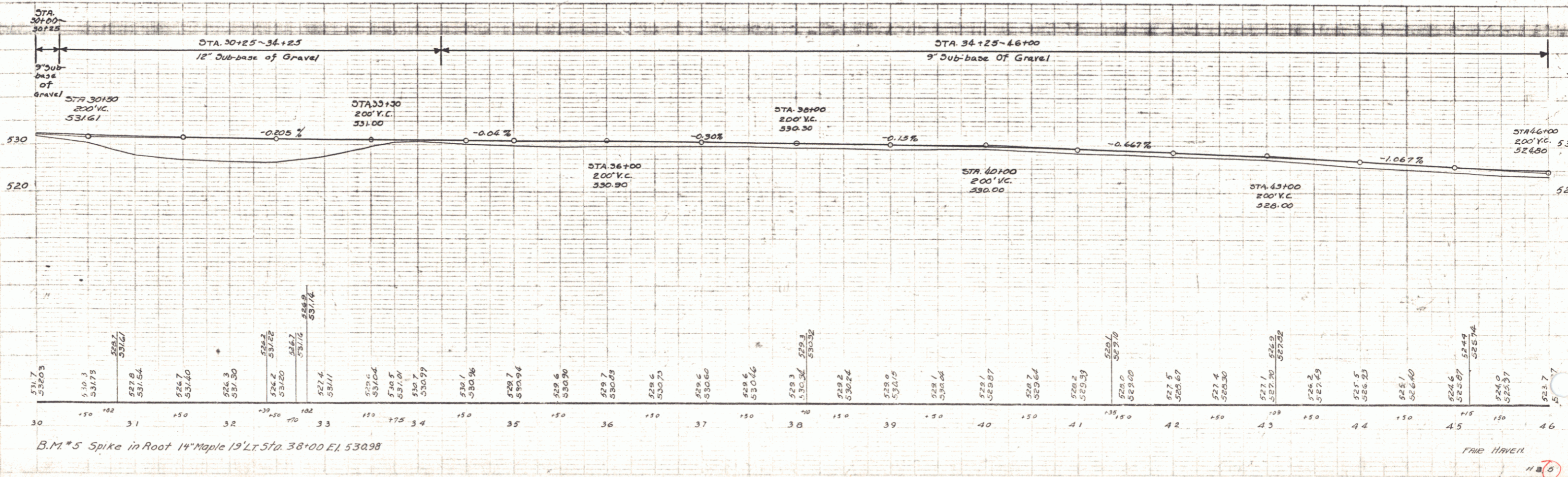
STA	LT. OR RT.	LENG.
30+33	RT.	60'



CURVE #3
 Δ. 2° 43' 11"
 D. 0° 15'
 E. 229.83
 T. 543.5
 L. 1086.7
 E. 6.4

CONSTRUCT GRAVEL SIDEWALK 4 FT WIDE AND 6" THICK BETWEEN STA 30+00 + 33+75 ON RIGHT SIDEWALK TO BE PAID FOR BY SUBS OF GRAVEL

POOR ORIGINAL COPY



B.M. #5 Spike in Root 14" Maple 19' Lt. Sta. 38+00 El. 530.98

FAIR HAVEN

1180

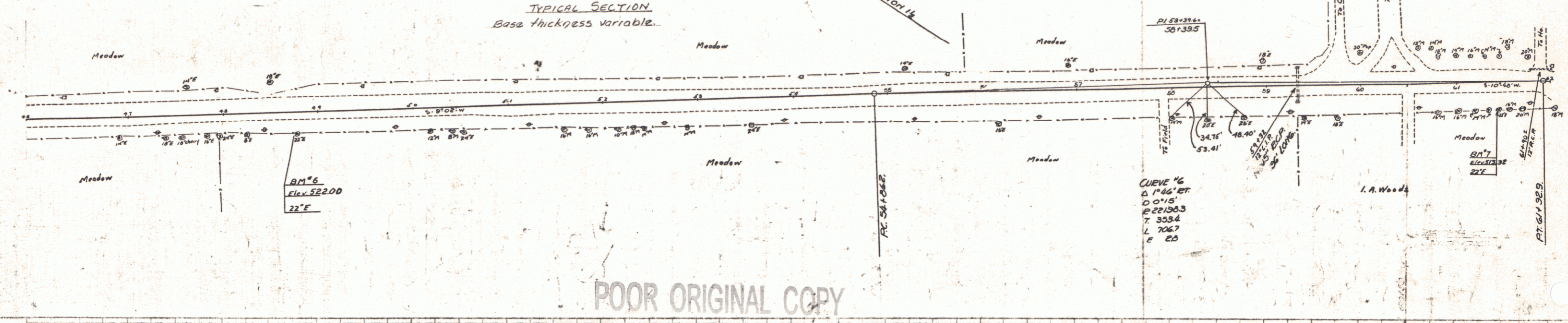
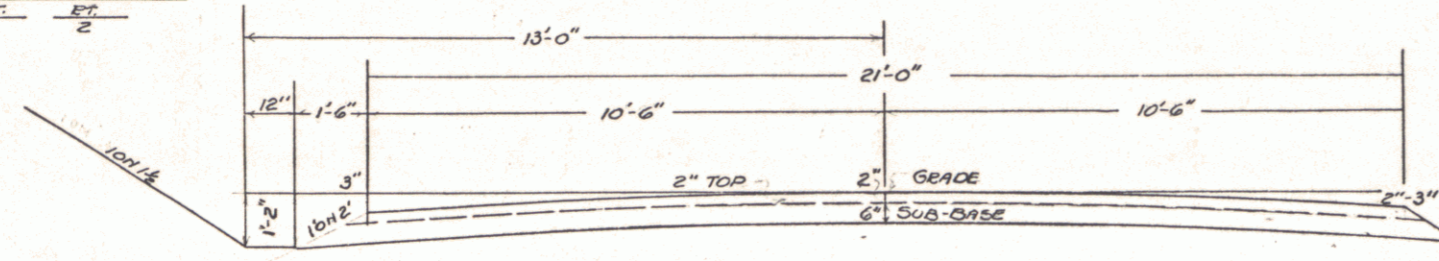
3

WOOD GUIDE POSTS REQUIRED

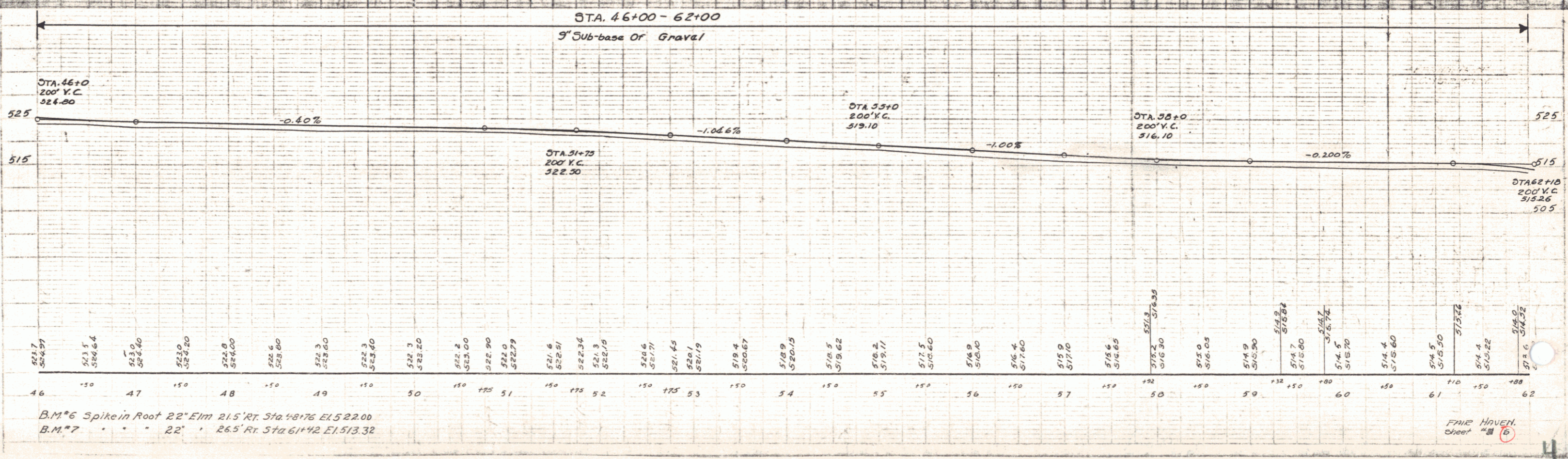
CULV. STA.	LT.	RT.
59+32	2	2

NEW BRICK CONCRETE PIPE CONDUIT REQUIRED

STATION	DIAM.	LENG.	C.P.M.
39+32	15"	36'	27.00



POOR ORIGINAL COPY



B.M.#6 Spike in Root 22' Elm 21.5' Rt. Sta. 48+76 EL. 522.00
 B.M.#7 " " " 22' " 26.5' Rt. Sta. 61+42 EL. 513.32

FRAME HOVER. Sheet # 6

WOOD GUARD RAIL REQUIRED

CLEY STA	LT	RT
70+50	24'	24'

RESETTING GUARD RAIL

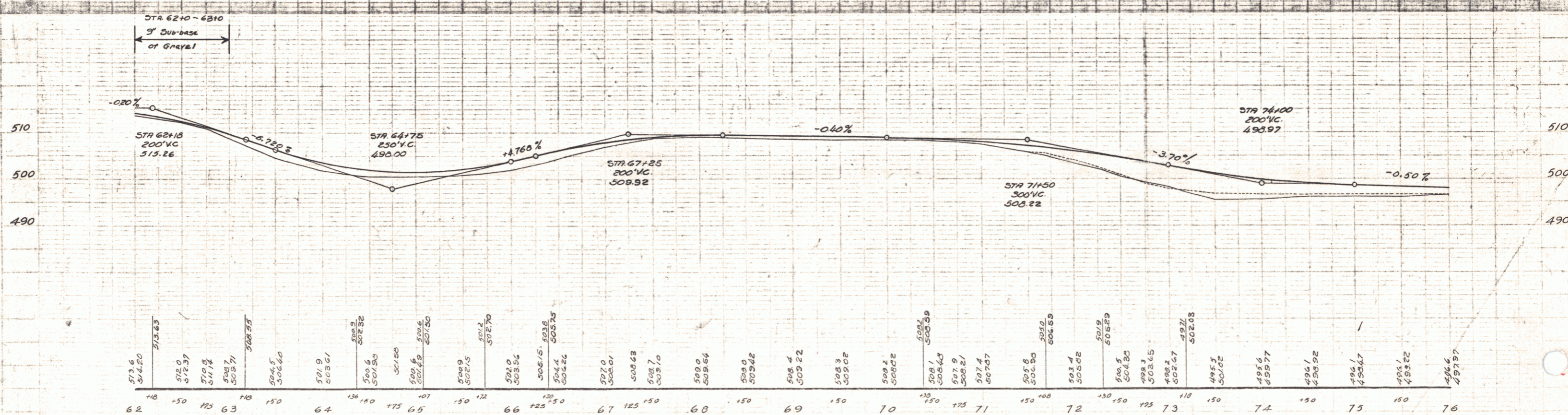
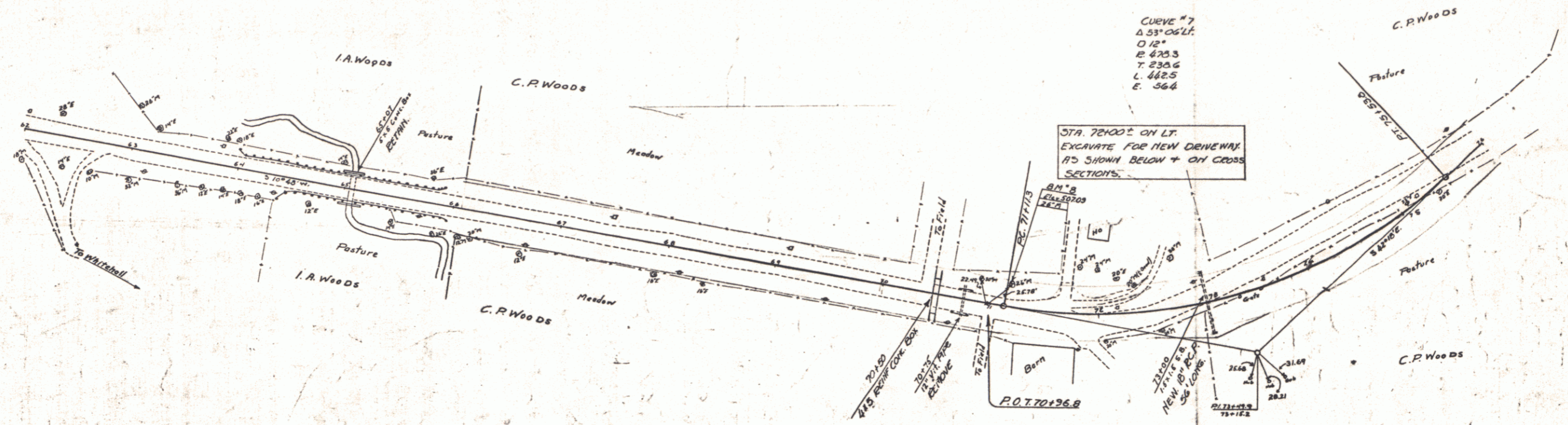
STATION'S	LEGT	LENG
64100-65190	LT	190'
64140-65196	RT	156'

NEW REINFORCED CONCRETE PIPE CULVERTS REQUIRED

STATION	DIAM	LENG	C.R.M.
73100	16"	56'	3.5 %

REINFORCED CONCRETE BOX CULVERT REQUIRED

STA	SIZE	CONC A	STEEL
70+50	4x5	27%	2200#



Barrett Reynolds Dec 21 1923

Barrett Reynolds Dec 21 1923

B.M. #8 Spike in Root of Maple 26' Lt. Sta. 71+4 E1.507.09

Fair Haven Sheet # 17

WOOD GUIDE POSTS REQUIRED

STA.	LT.	RT.
77+30	1	1

CABLE GUARD RAIL REQUIRED

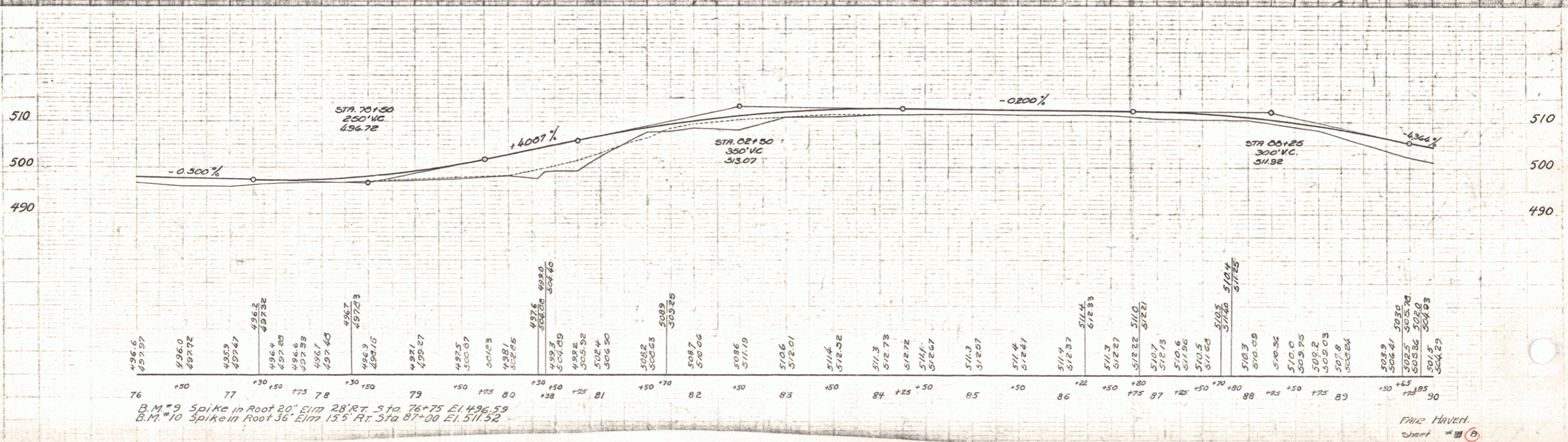
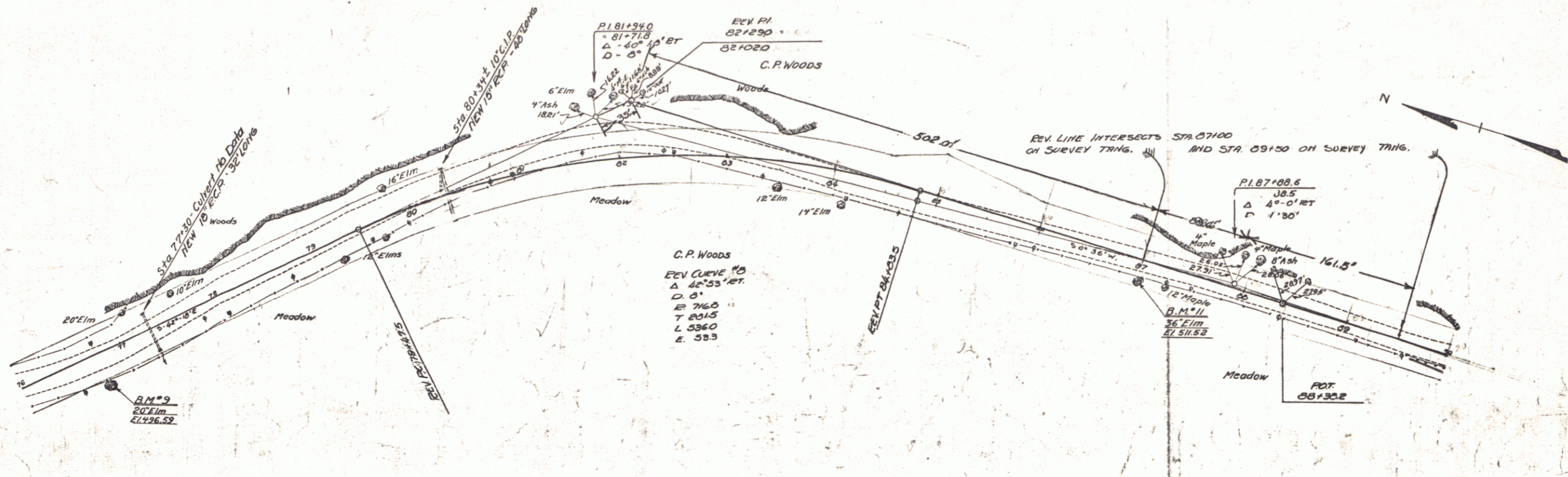
STATIONS	TO SET	LENG.	CONST.	PAVING
79+55-80+71	LT	76'	40'	112'
79+75-80+71	RT	96'	40'	136'

NEW BRINK CONE PIPE CULVERTS REQUIRED

STATION	DIAM.	LENG.	C.E.M.
77+30	18"	32'	3.5 E4
80+36	15"	40'	4.3 E4

RESETTING GUARD RAIL REQUIRED

STATIONS	LT. OR RT.	LENG.
59+60-50+00	RT.	40'



Barrett Reynolds Dec 31 Dec 31

Barrett Reynolds Dec 31 Dec 31

B.M. #9 Spike in Root 20' Elm 28' RT. Sta 76+75 El. 496.59
 B.M. #10 Spike in Root 36' Elm 15' RT. Sta 87+00 El. 511.52

PAUL HAYDEN
 6

