

WOOD GUARD RAIL REQUIRED

| CLEY STA | LT | RT |
|----------|-----|-----|
| 70+50 | 24' | 24' |

CABLE GUARD RAIL REQUIRED

| STATION'S | LEGT | LENG | CONC | PAY LENS |
|-------------|------|------|------|----------|
| 72+75-73+15 | LT | 40' | 40' | 20' |
| 72+75-74+03 | RT | 125' | 80' | 160' |

RESETTING GUARD RAIL

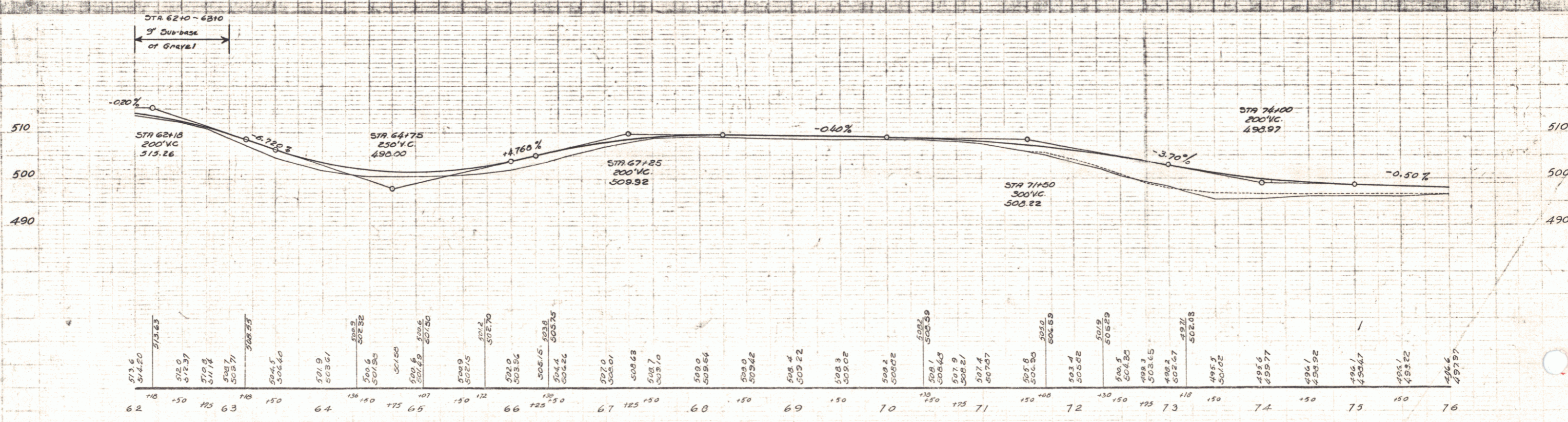
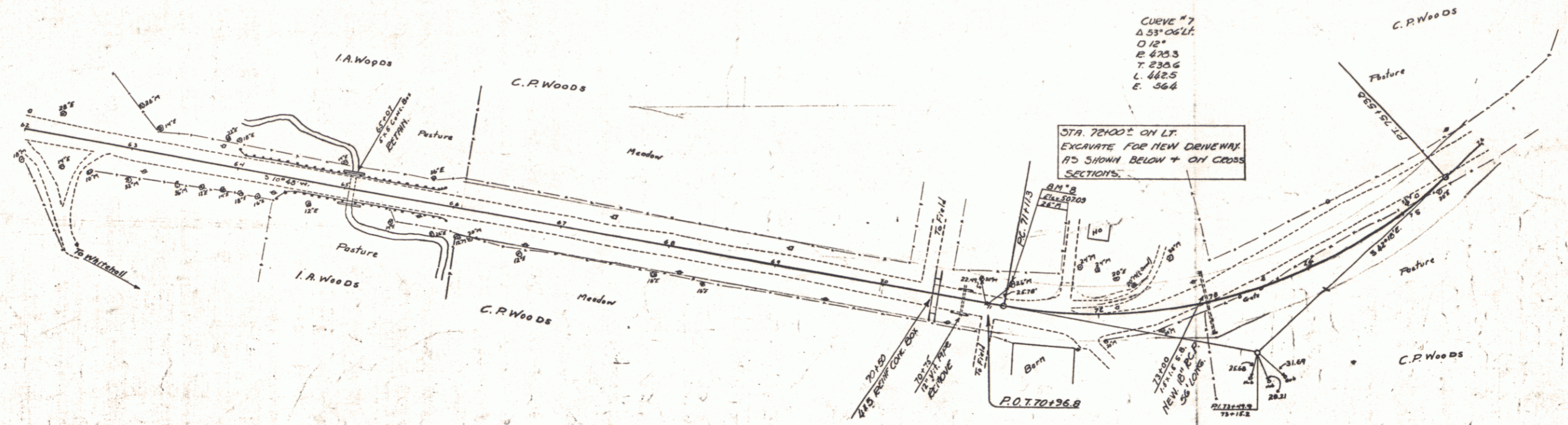
| STATION'S | LEGT | LENG |
|-------------|------|------|
| 64+00-65+90 | LT | 190' |
| 64+00-65+96 | RT | 156' |

NEW REINF CONC PIPE CULVERTS REQUIRED

| STATION | DIAM | LENG | C.R.M. |
|---------|------|------|--------|
| 73+00 | 16" | 56' | 3.5 % |

REINF CONC BOX CULVERT REQUIRED

| STA | SIZE | CONC A | STEEL |
|-------|------|--------|-------|
| 70+50 | 4x5 | 27% | 2200# |



B.M. #8 Spike in Root 26' Maple 26' Lt. Sta. 71+4 E1.507.09

Fair Haven, Sheet # 17