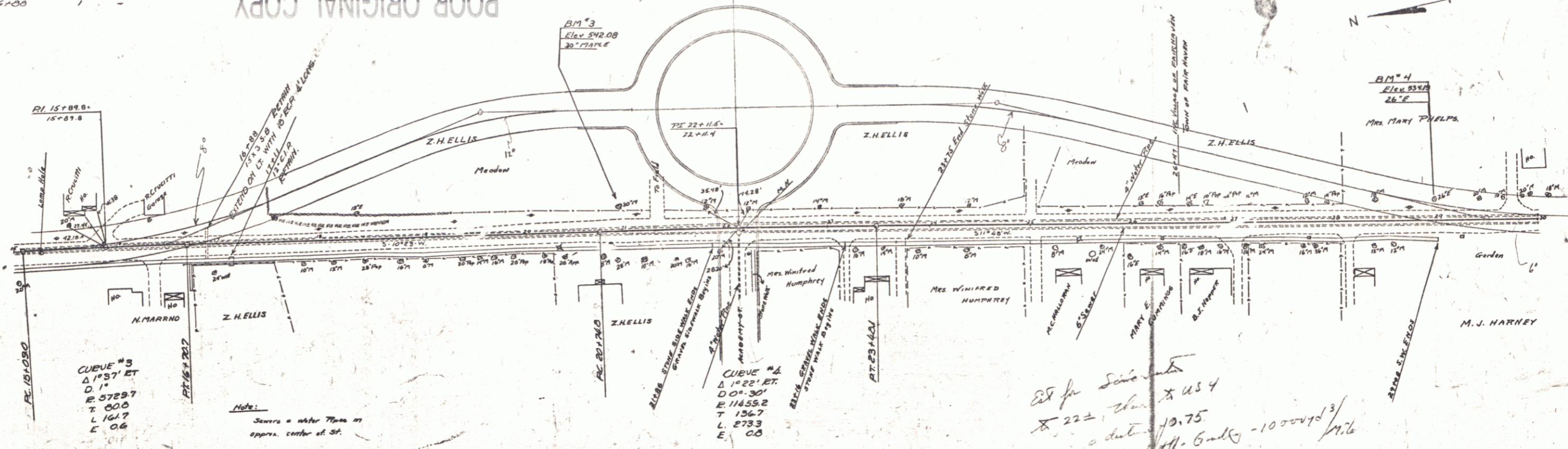


WOOD GUIDE POSTS REQUIRED  
 CULV. STA. LT. RT.  
 16+00 1 -

POOR ORIGINAL COPY  
 POOR ORIGINAL COPY

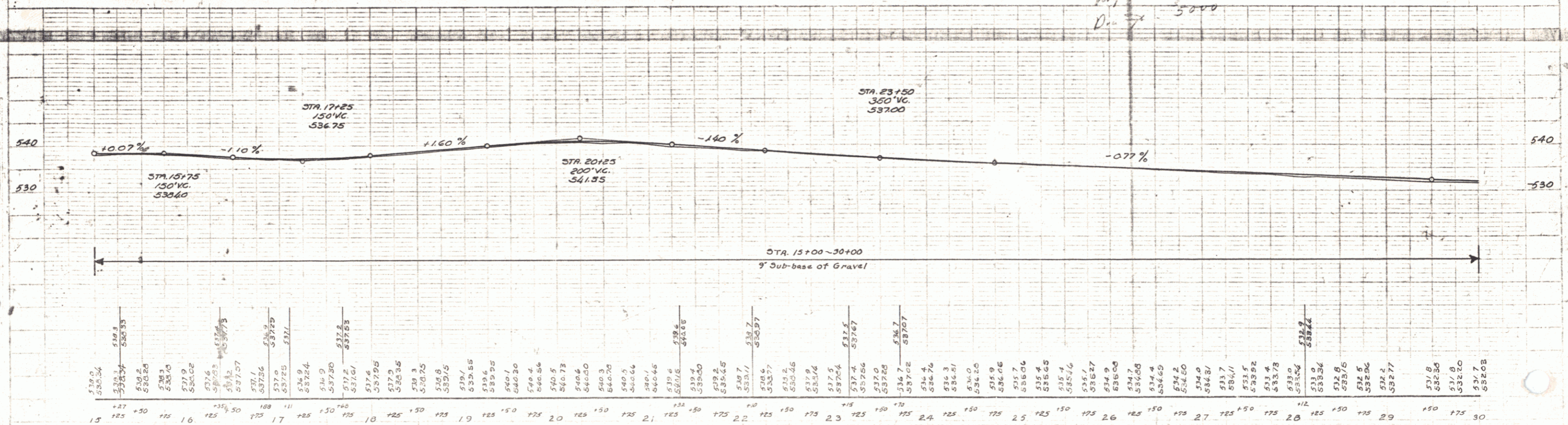
PIPE CULVERT REPAIRS REQUIRED  
 STA. CULV. DIA. EXTEND CEM.  
 16+00 L 10' 4' 10' 0'

Barrett  
 No. 31  
 10-21-21



Note:  
 Sewers & water lines in  
 approx. center of st.

2x for same  
 x 222, then x 454  
 a distance of 10.75  
 very little grade - 10000' / 1/4  
 D = 5000



B.M. #3 Spike in Root 30' Maple 21.5' LT Sta. 20+96 E1.542.08  
 B.M. #4 26' Elm 19.5' LT Sta. 20+97 E1.534.13

FILE HARNEY  
 Sheet 4